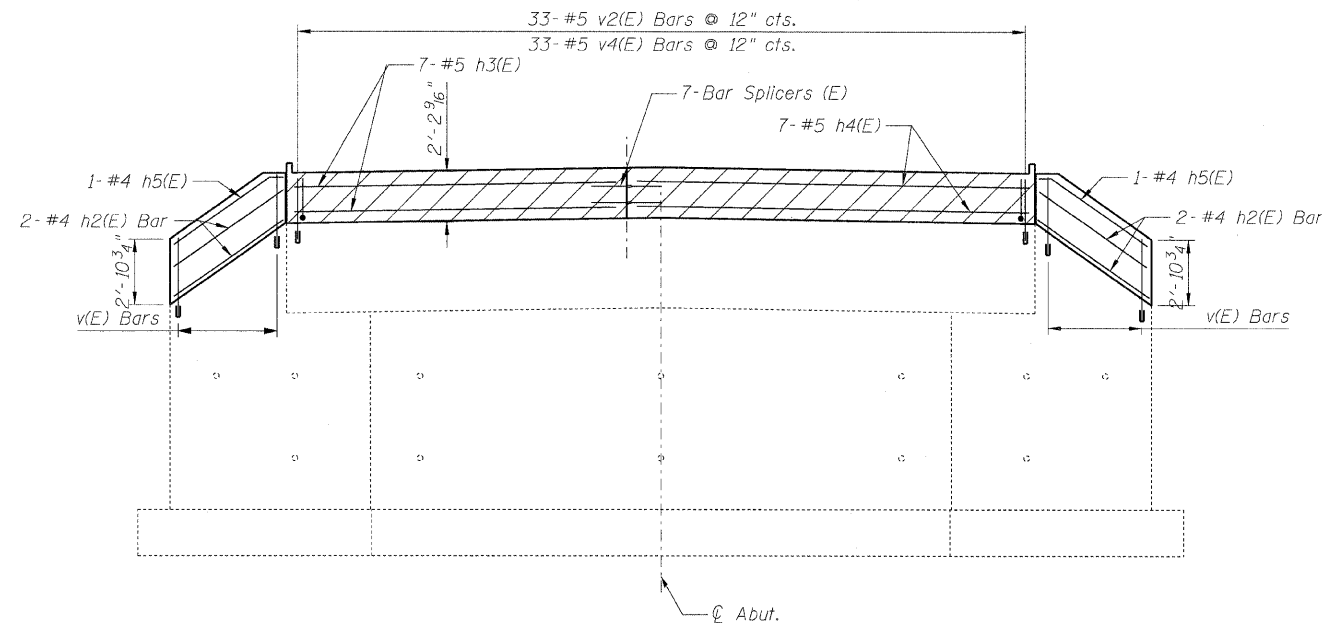
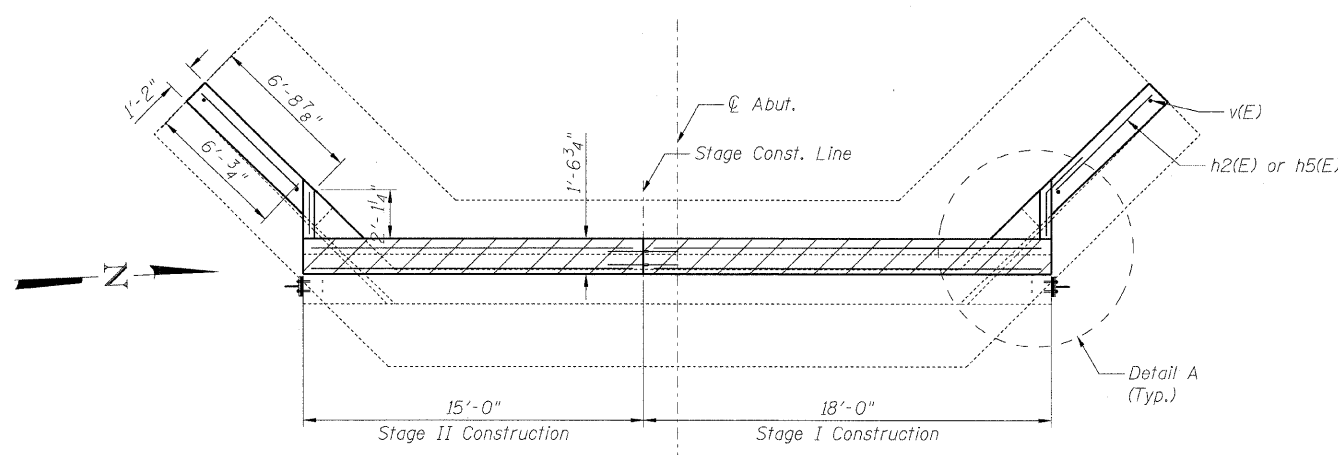


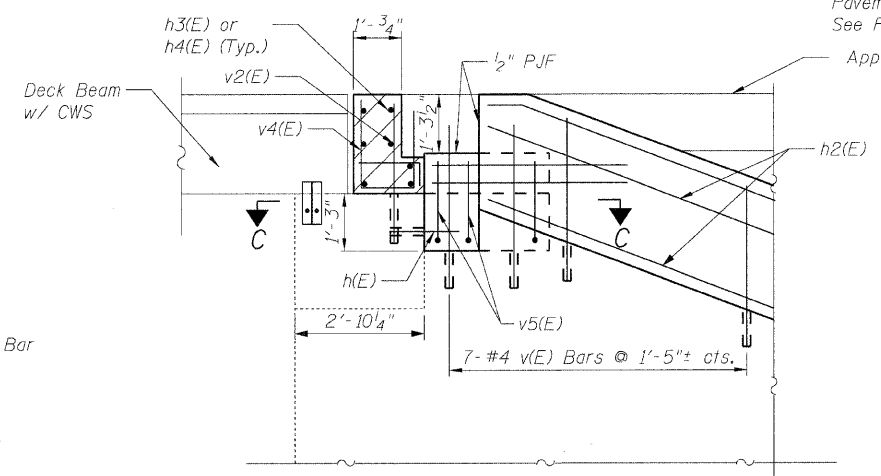
STATE OF ILLINOIS  
DEPARTMENT OF TRANSPORTATION



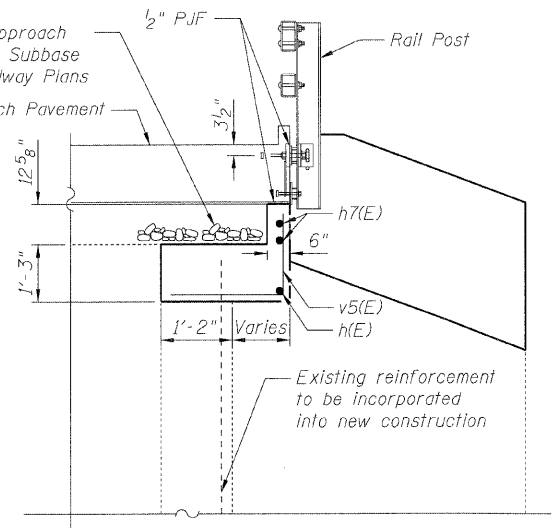
**ELEVATION**  
Looking West



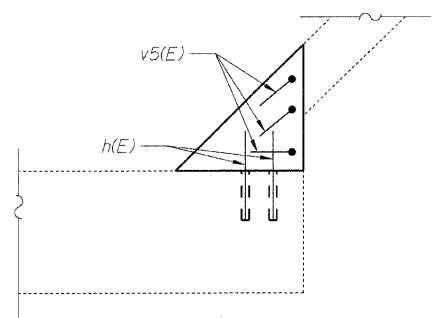
**PLAN**



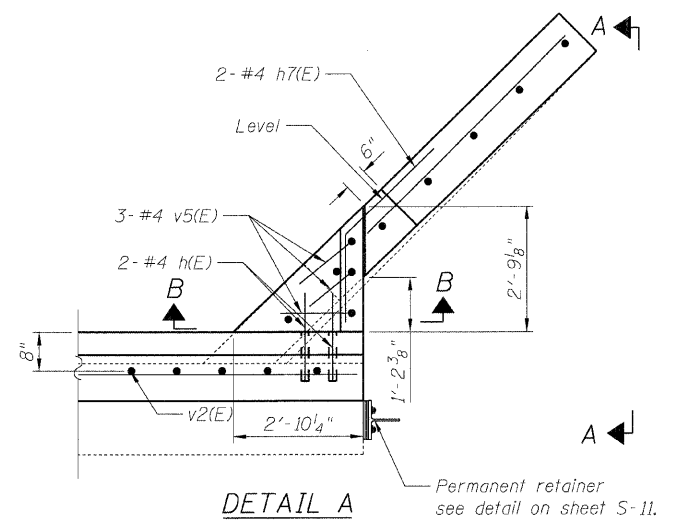
**VIEW A-A**



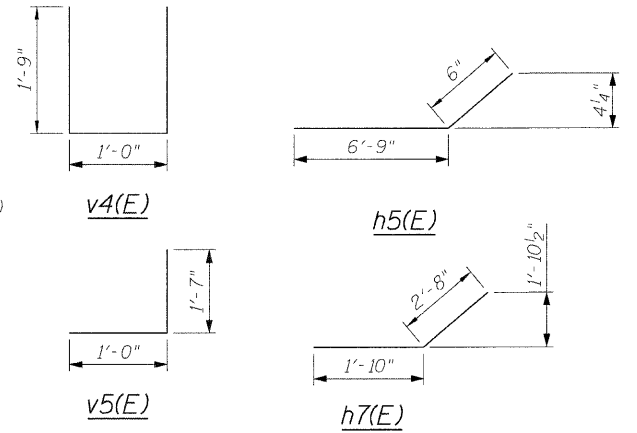
**SECTION B-B**



**SECTION C-C**



**DETAIL A**



**NOTES:**

1. Drill and grout h(E) and v(E) bars 9" min., and v2(E) bars 12" min. in accordance with Article 584 of the Standard Specifications. Cost included with "Reinforcement, Bars Epoxy Coated."
2. For rail anchorage details see sheet S-6.
3. For rail post location, see sheet S-6.
4. For typical section thru W. Abutment, see sheet S-6.

**BILL OF MATERIAL**

Bar	No.	Size	Length	Shape
h(E)	4	#4	1'-9"	—
h2(E)	4	#4	7'-0"	—
h3(E)	7	#5	14'-8"	—
h4(E)	7	#5	17'-8"	—
h5(E)	2	#4	7'-3"	—
h7(E)	4	#4	4'-6"	—
v(E)	14	#4	3'-8"	—
v2(E)	33	#5	2'-10"	—
v4(E)	33	#5	4'-6"	┌
v5(E)	6	#4	2'-7"	└
Concrete Structures			Cu. Yd.	2.7
Reinforcement Bars, Epoxy Coated			Pound	580
Bar Splicers			Each	7
Concrete Superstructure			Cu. Yd.	3.5

**WEST ABUTMENT**  
**FAS 1317 (IL RTE 113)**  
**OVER TERRY CREEK**  
**STA. 784+13.00**  
**S.N. 099-0172**

B. Sauter
E. Mroczek
R. Danley
B. Sauter

**CG** **Giorba Group, Inc.**  
**CONSULTING ENGINEERS**  
5507 North Cumberland Avenue, Suite 402 Chicago, Illinois 60656  
Tel. 773.775.4009 Fax 773.775.4014 Email chicago@giorba.com

SHEET NO. S-12	F.A.I RTE.	SECTION	COUNTY	TOTAL SHEETS	SHEET NO.
	1317	111 B-2	WILL	32	27
S-13 SHEETS			CONTRACT NO. 60D86		
FED. ROAD DIST. NO.		ILLINOIS FED. AID PROJECT			

7/8/2008 rdanley na:\proj\3329\3329\_22\design\structural\acad\sheet\3329\_22\_12\_West Abutment\_2.sht