

CONSTRUCTION SEQUENCE

CONSTRUCTION

TRAFFIC CONTROL

STAGE 1

NORTHBOUND DECK BEAM REPLACEMENT, BRIDGE APPROACH AND GUARDRAIL

ONE-WAY TRAFFIC ON SOUTHBOUND LANE FROM STA. 62+14 TO STA. 68+92 UTILIZE STANDARD 701321

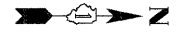
STAGE 2

SOUTHBOUND DECK BEAM REPLACEMENT, BRIDGE APPROACH AND GUARDRAIL

ONE-WAY TRAFFIC ON NORTHBOUND LANE FROM STA. 62+64 TO STA. 69+25 UTILIZE STANDARD 701321

- Work area
- Sign
- Type III barricade
- Traffic signal
- Detector loops
- Impact attenuator
- Stop Bar 24-inch
- Drum with steady burning light (25' cts.)
- Temporary concrete barrier
- Temporary rumble strip (when specified)
- Double vertical panel (see detail)
- Crystal, bidirectional
- barrier wall/guardrail marker (25' cts.)
- Non-directional flashing beacon

- ① Type III barricade to be placed when no work is being performed.
- ② Barrier wall/guardrail markers at 25' cts. See Standards 704001 & 635011.

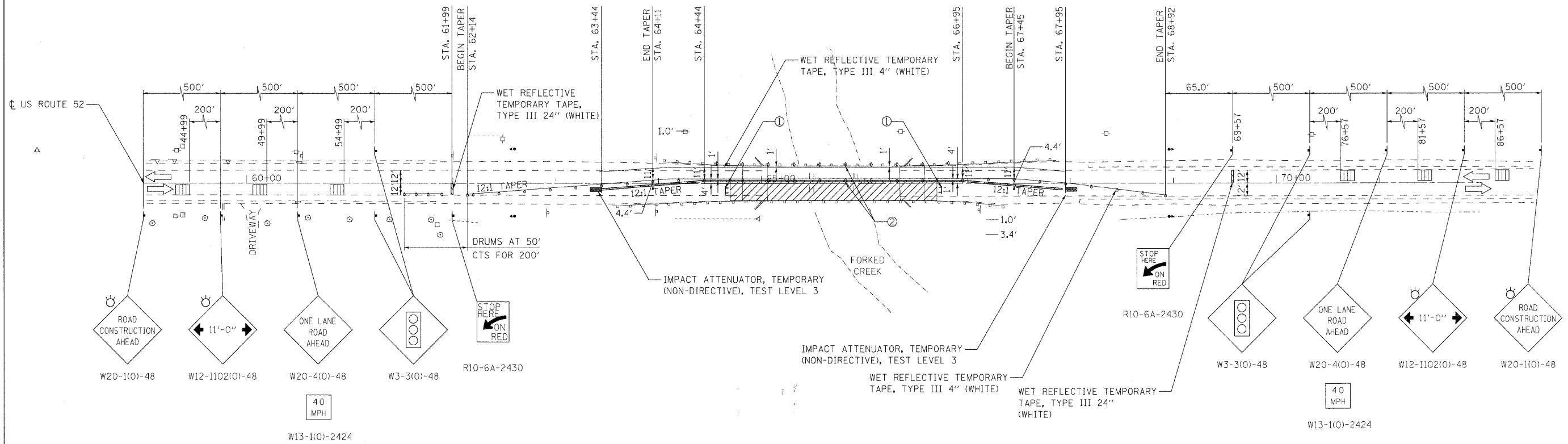


GENERAL NOTES

Traffic signals shall be operational only when all traffic controls are in place. When traffic signals are not in operation, flaggers shall be used and traffic control shall conform to Standard 701201.

Temporary concrete barrier shall be according to Standard 704001.

When existing pavement markings and raised pavement markers are in conflict with the traffic control and protection plan, existing pavement marking and raised pavement markers shall be removed and paid for as pavement marking removal or as raised reflective pavement marking removal.



FILE NAME = n:\proj\3129\3129_23\design\proposals\3129_23.mcd\lht

Ciorba Group, Inc.
 CONSULTING ENGINEERS
 5507 North Cumberland Avenue, Suite 402
 Chicago, Illinois 60656
 Tel. 773.775.4009 Fax 773.775.4014

USER NAME = wlonaster	DESIGNED - DMM	REVISED -
PLOT SCALE = 50,0000' / IN.	DRAWN - DMM	REVISED -
PLOT DATE = 7/8/2008	CHECKED - MJL	REVISED -
	DATE - 07/09/2008	REVISED -

STATE OF ILLINOIS
DEPARTMENT OF TRANSPORTATION

FAP 852 /US ROUTE 52
OVER FORKED CREEK
TRAFFIC CONTROL AND PROTECTION - STAGE 1

SCALE: 1"=50' SHEET NO. OF SHEETS STA. TO STA.

F.A.P. RTE. 852	SECTION 18B	COUNTY WILL	TOTAL SHEETS 31	SHEET NO. 7
FED. ROAD DIST. NO.		ILLINOIS FED. AID PROJECT		
CONTRACT NO. 60D87				