

F.A.U. RTE.	SECTION	COUNTY	TOTAL SHEETS	SHEET NO.
0318	DB-1-R-B	WILL	40	1
FED. ROAD DIST. NO.	ILLINOIS CONTRACT NO.		60D88	

STATE OF ILLINOIS
DEPARTMENT OF TRANSPORTATION
DIVISION OF HIGHWAYS

**PROPOSED
HIGHWAY PLANS**

FAU 0318 /US ROUTE 6
OVER I & M CANAL
SECTION DB-1-R-B
BRIDGE BEAM REPLACEMENT, NEW DECK

**WILL COUNTY
C-91-122-08**

FOR INDEX OF SHEETS SEE SHEET NUMBER 2

THIS IMPROVEMENT IS LOCATED
IN THE VILLAGE OF ROCKDALE

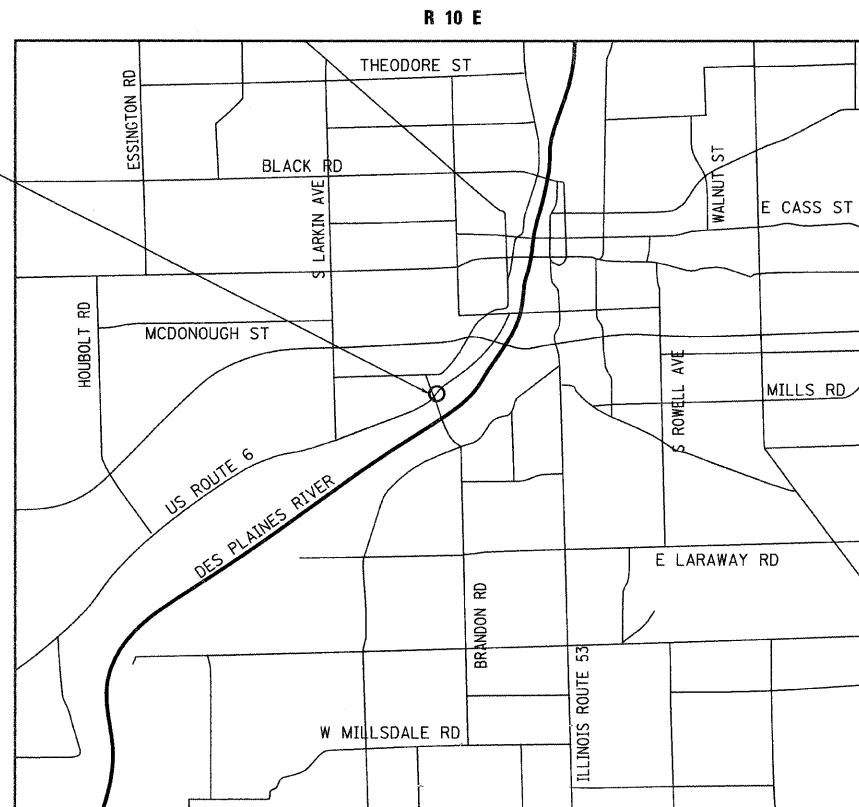
TRAFFIC DATA

2005 ADT - 6200
POSTED SPEED LIMIT - 45 MPH

IMPROVEMENT LOCATION
SN: 099-0098

US 6 OVER I & M CANAL

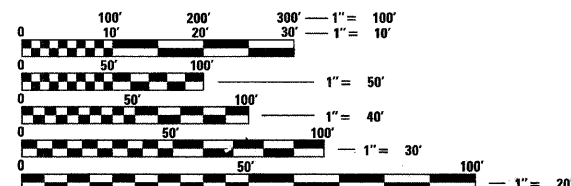
SN: 099-0098
SINGLE SPAN PPC DECK
BEAM BRIDGE ON CLOSED ABUTMENT



JOLIET TOWNSHIP

LOCATION MAP
1:5000

GROSS AND NET LENGTH OF PROJECT = 562 FT = 0.11 MI



FULL SIZE PLANS HAVE BEEN PREPARED USING STANDARD
ENGINEERING SCALES. REDUCED SIZED PLANS WILL NOT
CONFORM TO STANDARD SCALES. IN MAKING MEASUREMENTS
ON REDUCED PLANS, THE ABOVE SCALES MAY BE USED.

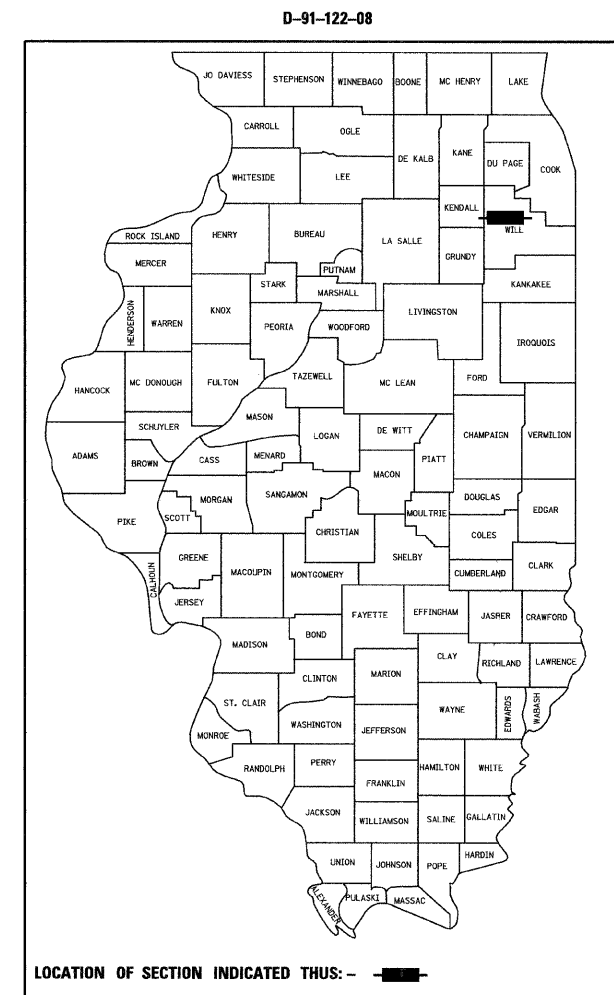
J.U.L.I.E.
JOINT UTILITY LOCATION INFORMATION FOR EXCAVATION
1-800-892-0123
OR 811

Ciorba Group, Inc.

DESIGN FIRM
REGISTRATION NUMBER
184-001016

CONSULTING ENGINEERS
SUITE 402, 5507 NORTH CUMBERLAND AVE
CHICAGO, ILLINOIS 60656 ☎ (773) 775-4009

CONTRACT NO. 60D88



LOCATION OF SECTION INDICATED THUS: - [black rectangle] -



STATE OF ILLINOIS
DEPARTMENT OF TRANSPORTATION
DIVISION OF HIGHWAYS

SUBMITTED July 7, 2008

Diane M. O'Keefe
DEPUTY DIRECTOR OF HIGHWAYS, REGION ENGINEER

August 15, 2008
Eric E. Harn
ENGINEER OF DESIGN AND ENVIRONMENT

August 15, 2008
Christina M. Reed
DIRECTOR OF HIGHWAYS, CHIEF ENGINEER

**PRINTED BY THE AUTHORITY
OF THE STATE OF ILLINOIS**

DISTRICT 1 DESIGN PLAN PREPARATION ENGINEER: K. ENG (847) 705-4247