

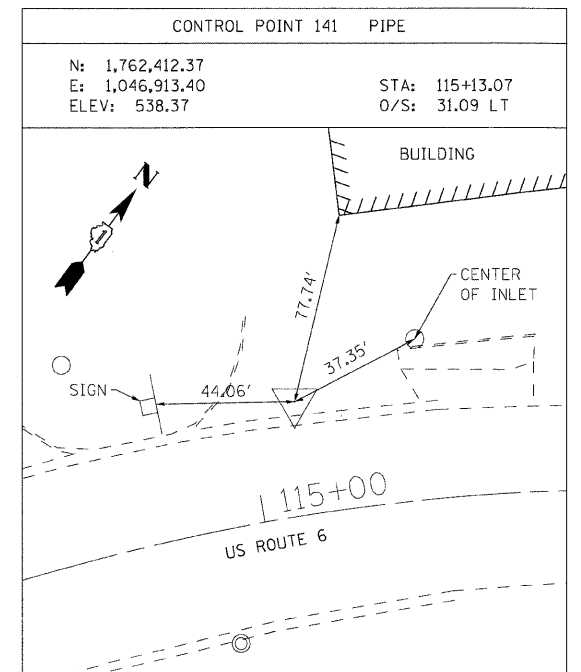
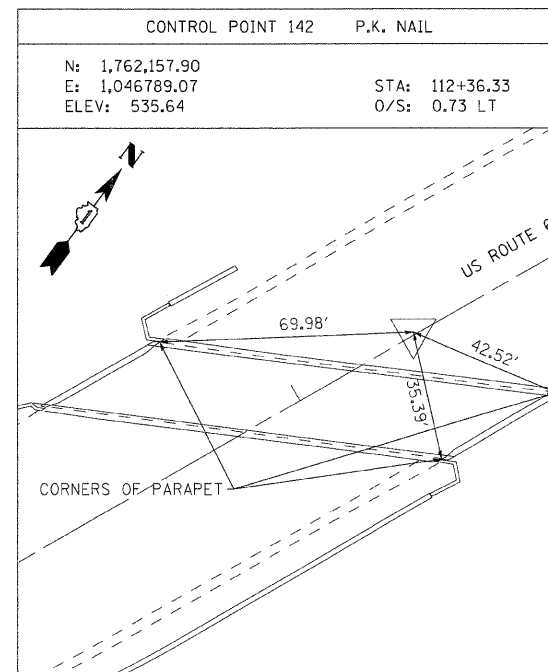
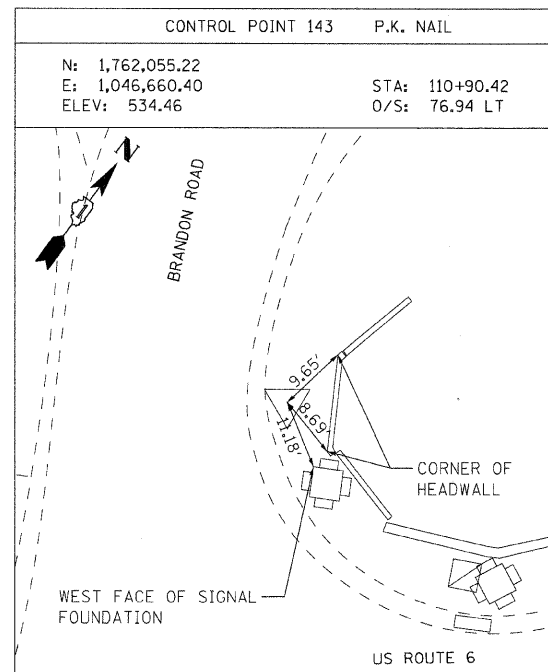
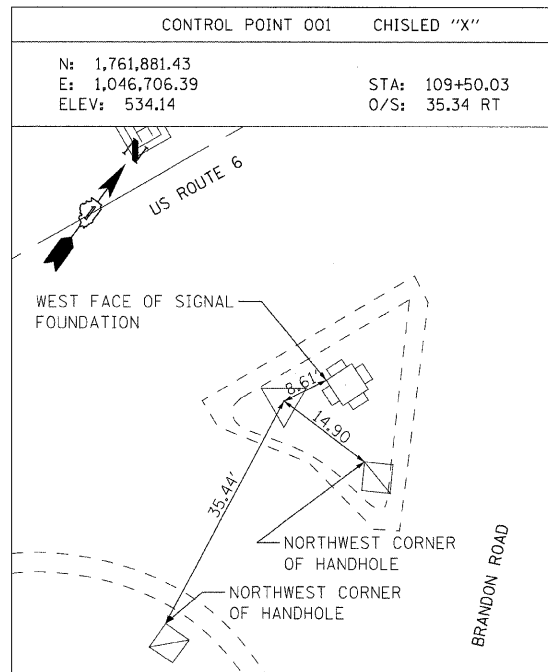
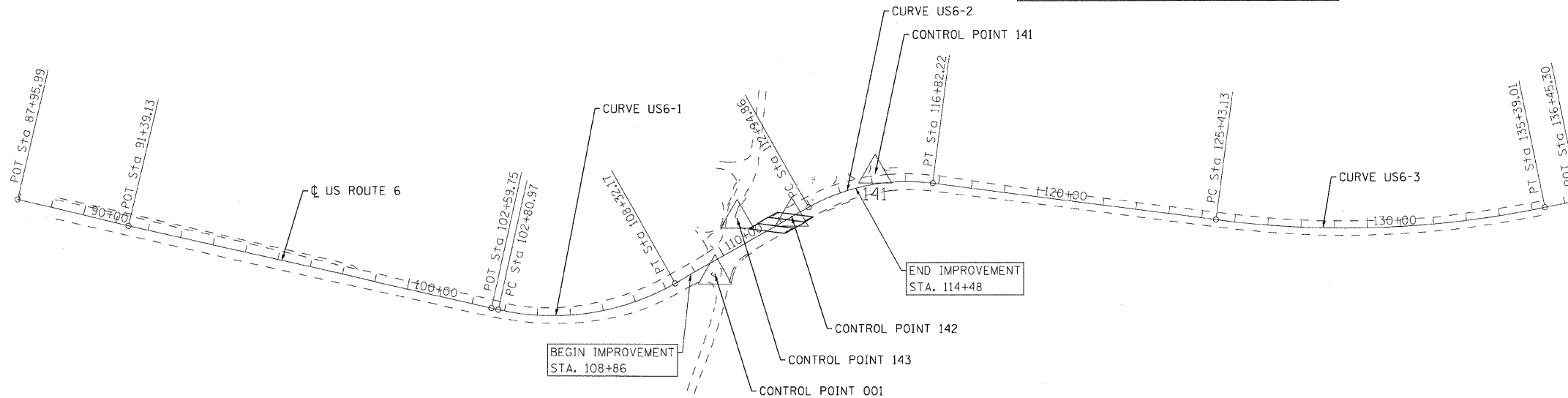
EXIST. CURVE US6-1
 PI STA. = 105+69.69
 $\Delta = 42^\circ 06' 29''$ (LT)
 $D = 7^\circ 38' 22''$
 $R = 750.00'$
 $T = 288.71'$
 $L = 551.19'$
 $E = 53.65'$
 P.C. STA. = 102+80.97
 P.T. STA. = 108+32.17
 DESIGN SPEED = 45 MPH

EXIST. CURVE US6-2
 PI STA. = 114+95.56
 $\Delta = 36^\circ 59' 25''$ (RT)
 $D = 9^\circ 32' 57''$
 $R = 600.00'$
 $T = 200.70'$
 $L = 387.36'$
 $E = 32.68'$
 P.C. STA. = 112+94.86
 P.T. STA. = 116+82.22
 DESIGN SPEED = 45 MPH

EXIST. CURVE US6-3
 PI STA. = 130+45.69
 $\Delta = 19^\circ 01' 12''$ (LT)
 $D = 1^\circ 54' 35''$
 $R = 3,000.00'$
 $T = 502.57'$
 $L = 995.89'$
 $E = 41.80'$
 P.C. STA. = 125+43.13
 P.T. STA. = 135+39.01
 DESIGN SPEED = 45 MPH

PROJECT COORDINATES

US ROUTE 6 CENTERLINE			
DESCRIPTION	NORTHING	EASTING	
P.O.T.	87+95.99	1,760,804.739	1,044,888.421
P.O.T.	91+39.13	1,760,940.531	1,045,203.543
P.O.T.	102+59.75	1,761,397.430	1,046,226.789
P.C.	102+80.97	1,761,406.084	1,046,246.173
P.T.	108+32.17	1,761,787.894	1,046,626.444
P.C.	112+94.86	1,762,211.136	1,046,813.383
P.T.	116+82.22	1,762,492.578	1,047,069.703
P.C.	125+43.13	1,762,912.310	1,047,821.357
P.T.	135+39.01	1,763,531.985	1,048,595.129
P.O.T.	136+45.30	1,763,611.220	1,048,665.974



FILE NAME = n:\pcc\3329\3329_24\design\proposed\plan\3329_24-94-01\ignment.dgn



Ciorba Group, Inc.
 CONSULTING ENGINEERS
 5507 North Cumberland Avenue, Suite 402
 Chicago, Illinois 60655
 Tel: 773.775.4009 Fax: 773.775.4014

USER NAME = jaojeman	DESIGNED - JCC	REVISED -
PLOT SCALE = 200.0000' / 1"	DRAWN - JCC	REVISED -
PLOT DATE = 7/8/2008	CHECKED - MJL	REVISED -
	DATE - 07/09/2008	REVISED -

STATE OF ILLINOIS
 DEPARTMENT OF TRANSPORTATION

FAU 0318/ US ROUTE 6 (RAILROAD AVENUE)
 OVER I & M CANAL
 ALIGNMENT AND CONTROL POINTS

SCALE: 1"=200' SHEET NO. OF SHEETS STA. TO STA.

F.A.U. RTE.	SECTION	COUNTY	TOTAL SHEETS	SHEET NO.
0318	DB-1-R-B	WILL	40	4
CONTRACT NO. 60D88				
FED. ROAD DIST. NO. - [ILLINOIS] FED. AID PROJECT				