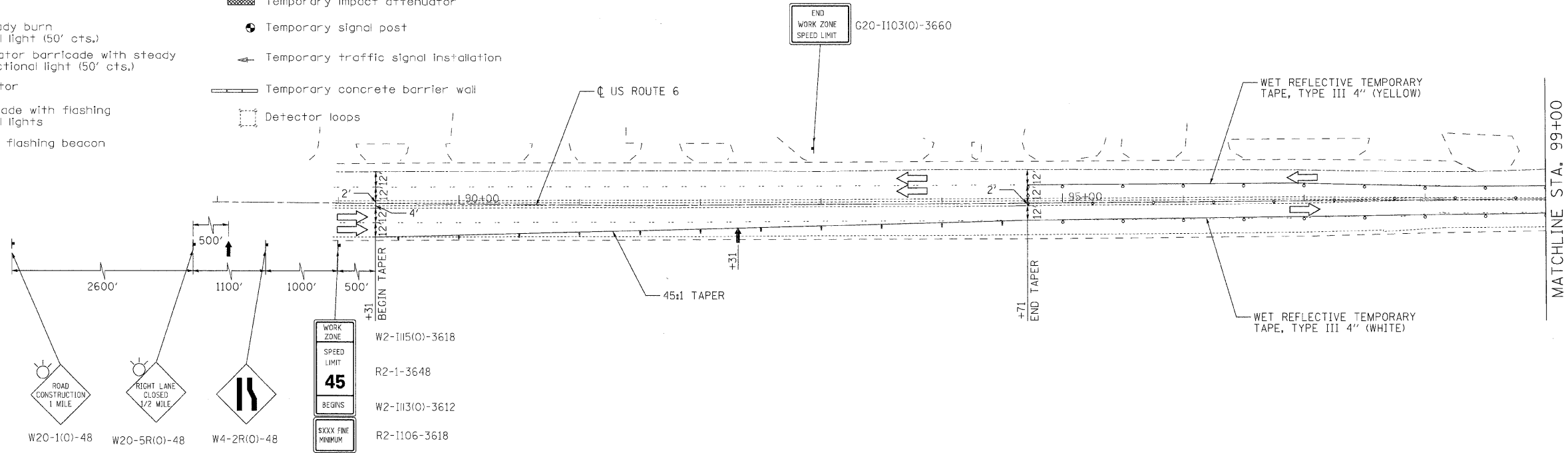


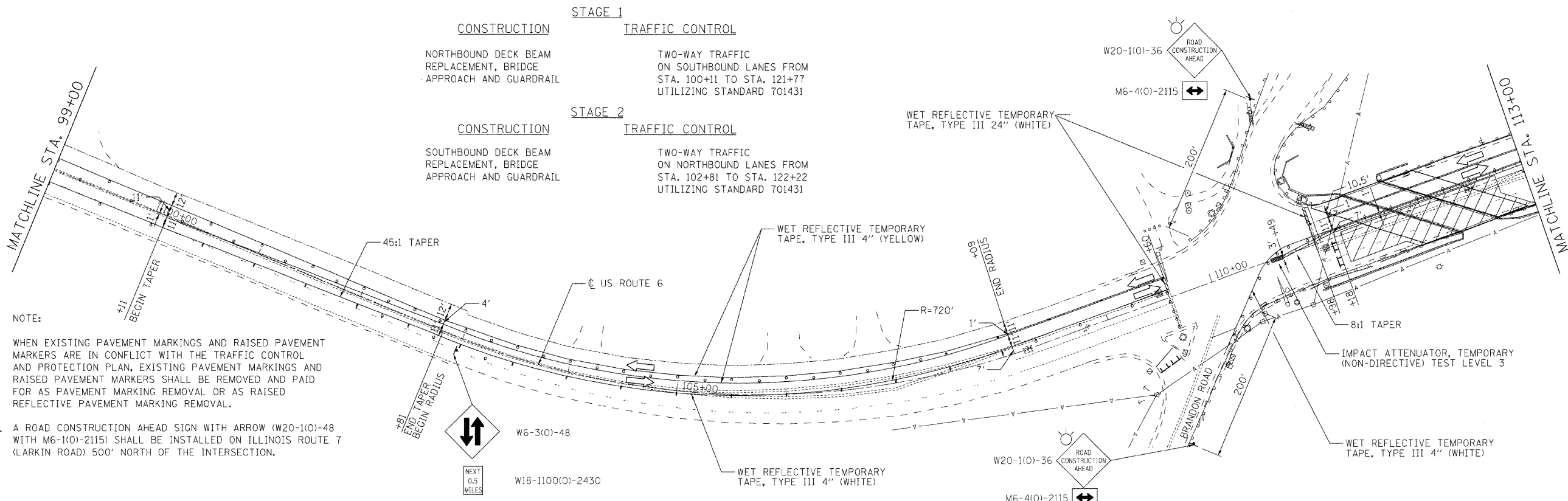
SYMBOLS

- ↑ Arrow board
- ▨ Work area
- ⚡ Sign
- ⊙ Drum with steady burn monodirectional light (50' cts.)
- ⬆ Direction indicator barricade with steady burn monodirectional light (50' cts.)
- Flexible delineator
- ⚡ Type III barricade with flashing monodirectional lights
- ⊙ Non-directional flashing beacon
- ◇ Crystal, bidirectional barrier wall / guardrail marker (25' cts.)
- ▨ Temporary impact attenuator
- ⊙ Temporary signal post
- ⬆ Temporary traffic signal installation
- ▬ Temporary concrete barrier wall
- Detector loops



CONSTRUCTION SEQUENCE

- STAGE 1**
- | | |
|---|---|
| CONSTRUCTION | TRAFFIC CONTROL |
| NORTHBOUND DECK BEAM REPLACEMENT, BRIDGE APPROACH AND GUARDRAIL | TWO-WAY TRAFFIC ON SOUTHBOUND LANES FROM STA. 100+11 TO STA. 121+77 UTILIZING STANDARD 701431 |
- STAGE 2**
- | | |
|---|---|
| CONSTRUCTION | TRAFFIC CONTROL |
| SOUTHBOUND DECK BEAM REPLACEMENT, BRIDGE APPROACH AND GUARDRAIL | TWO-WAY TRAFFIC ON NORTHBOUND LANES FROM STA. 102+81 TO STA. 122+22 UTILIZING STANDARD 701431 |



- NOTE:
- WHEN EXISTING PAVEMENT MARKINGS AND RAISED PAVEMENT MARKERS ARE IN CONFLICT WITH THE TRAFFIC CONTROL AND PROTECTION PLAN, EXISTING PAVEMENT MARKINGS AND RAISED PAVEMENT MARKERS SHALL BE REMOVED AND PAID FOR AS PAVEMENT MARKING REMOVAL OR AS RAISED REFLECTIVE PAVEMENT MARKING REMOVAL.
 - A ROAD CONSTRUCTION AHEAD SIGN WITH ARROW (W20-1(0)-48 WITH M6-1(0)-2115) SHALL BE INSTALLED ON ILLINOIS ROUTE 7 (LARKIN ROAD) 500' NORTH OF THE INTERSECTION.

PLAN	REVISIONS	DATE
NO.	BY	
NO.	BY	
NO.	BY	
NO.	BY	
NO.	BY	
NO.	BY	
NO.	BY	
NO.	BY	
NO.	BY	

PROFILE	REVISIONS	DATE
NO.	BY	
NO.	BY	
NO.	BY	
NO.	BY	
NO.	BY	
NO.	BY	
NO.	BY	
NO.	BY	
NO.	BY	

FILE NAME: s:\nrc\3329\3329_24\design\proposals\plan\3329_24_07-CP11.dwg

Ciorba Group, Inc.
 CONSULTING ENGINEERS
 5507 North Cumberland Avenue, Suite 402
 Chicago, Illinois 60656
 Tel. 773.775.4009 Fax 773.775.4014

USER NAME = jcoleman	DESIGNED - JCC	REVISED -
PLOT SCALE = 60,000' / IN.	DRAWN - JCC	REVISED -
PLOT DATE = 7/8/2008	CHECKED - MJL	REVISED -
DATE - 07/09/2008	DATE - 07/09/2008	REVISED -

STATE OF ILLINOIS
DEPARTMENT OF TRANSPORTATION

FAU 0318 /US ROUTE 6 (RAILROAD AVENUE)
OVER I & M CANAL
TRAFFIC CONTROL AND PROTECTION - STAGE 1

SCALE: 1"=50' SHEET NO. 1 OF 2 SHEETS STA. TO STA.

F.A.U. R.T.E. 0318	SECTION DB-1-R-B	COUNTY WILL	TOTAL SHEETS 40	SHEET NO. 7
FED. ROAD DIST. NO. - ILLINOIS FED. AID PROJECT			CONTRACT NO. 60D88	