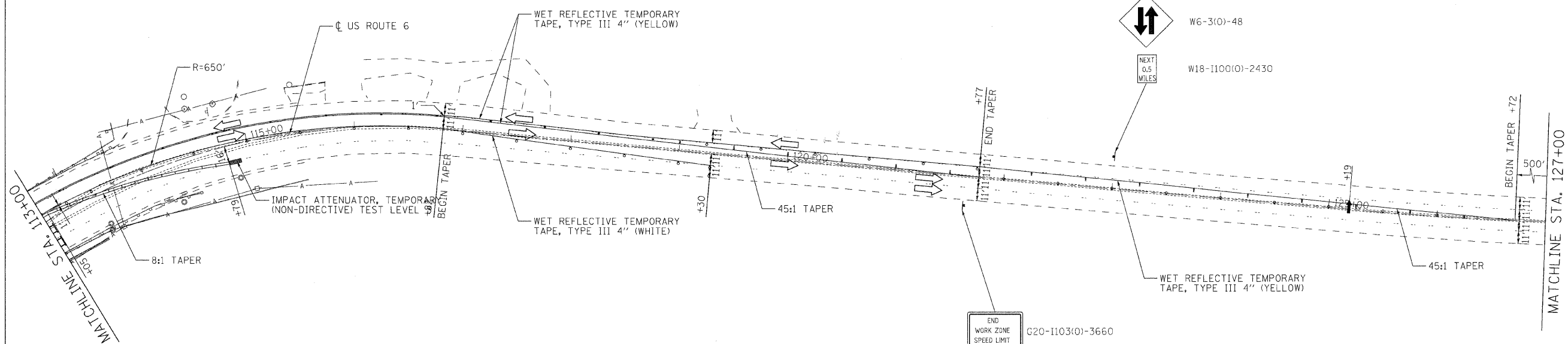
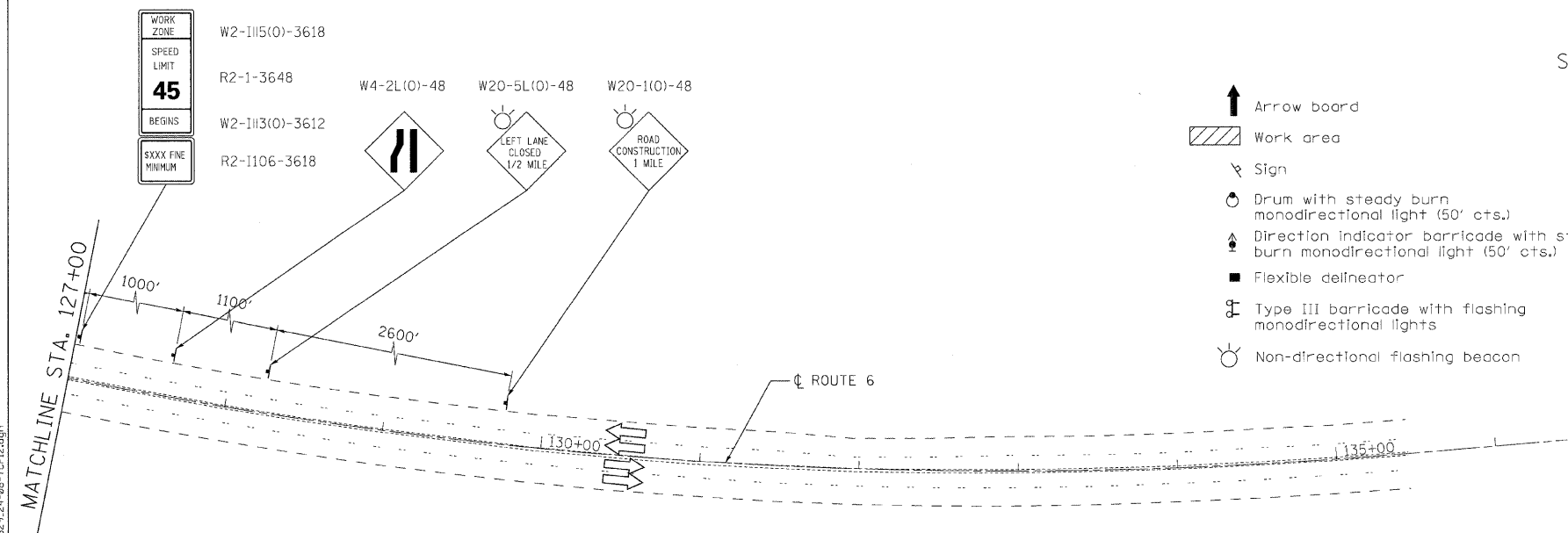


DATE	BY
PLAN	DATE
NO.	
NOTE BOOK	BY
NO.	
CHECKED	DATE
NO.	
DESIGNED	BY
NO.	
DRAWN	DATE
NO.	
CHECKED	BY
NO.	
DATE	



DATE	BY
PROFILE	DATE
NO.	
NOTE BOOK	BY
NO.	
CHECKED	DATE
NO.	
DESIGNED	BY
NO.	
DRAWN	DATE
NO.	
CHECKED	BY
NO.	
DATE	



SYMBOLS

- ↑ Arrow board
- ▨ Work area
- ⚠ Sign
- ⦿ Drum with steady burn monodirectional light (50' cts.)
- ⚡ Direction indicator barricade with steady burn monodirectional light (50' cts.)
- Flexible delineator
- ⚡ Type III barricade with flashing monodirectional lights
- ⦿ Non-directional flashing beacon
- ◊ Crystal, bidirectional barrier wall / guardrail marker (25' cts.)
- ▨ Temporary impact attenuator
- ⦿ Temporary signal post
- ← Temporary traffic signal installation
- ▨ Temporary concrete barrier wall
- Detector loops

NOTE:
 WHEN EXISTING PAVEMENT MARKINGS AND RAISED PAVEMENT MARKERS ARE IN CONFLICT WITH THE TRAFFIC CONTROL AND PROTECTION PLAN, EXISTING PAVEMENT MARKINGS AND RAISED PAVEMENT MARKERS SHALL BE REMOVED AND PAID FOR AS PAVEMENT MARKING REMOVAL OR AS RAISED REFLECTIVE PAVEMENT MARKING REMOVAL.

Ciorba Group, Inc.
 CONSULTING ENGINEERS
 5507 North Cumberland Avenue, Suite 402
 Chicago, Illinois 60656
 Tel. 773.775.4009 Fax 773.775.4014

USER NAME = jcalaman	DESIGNED - JCC	REVISED -
	DRAWN - JCC	REVISED -
PLOT SCALE = 50.0000' / IN.	CHECKED - MJL	REVISED -
PLOT DATE = 7/8/2008	DATE - 07/09/2008	REVISED -

**STATE OF ILLINOIS
 DEPARTMENT OF TRANSPORTATION**

**FAU 0318 /US ROUTE 6 (RAILROAD AVENUE)
 OVER I & M CANAL
 TRAFFIC CONTROL AND PROTECTION - STAGE 1**
 SCALE: 1"=50' SHEET NO. 2 OF 2 SHEETS STA. TO STA.

F.A.U. RTE. 0318	SECTION DB-1-R-B	COUNTY WILL	TOTAL SHEETS 40	SHEET NO. 8
			CONTRACT NO. 60D88	
FED. ROAD DIST. NO. - ILLINOIS FED. AID PROJECT				