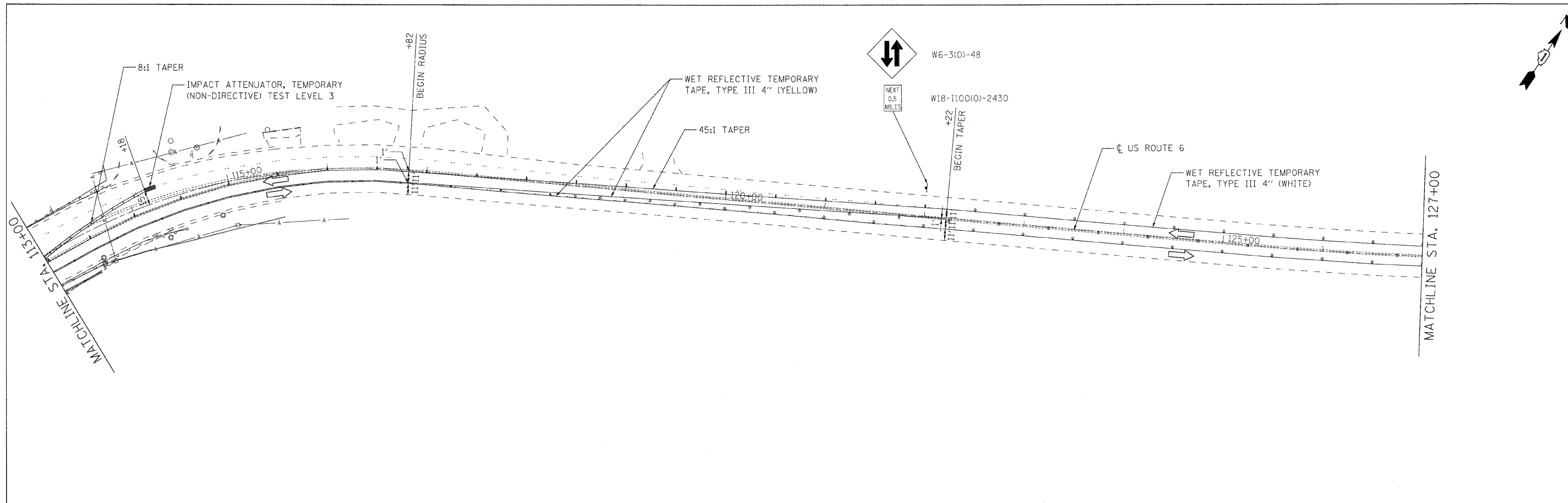
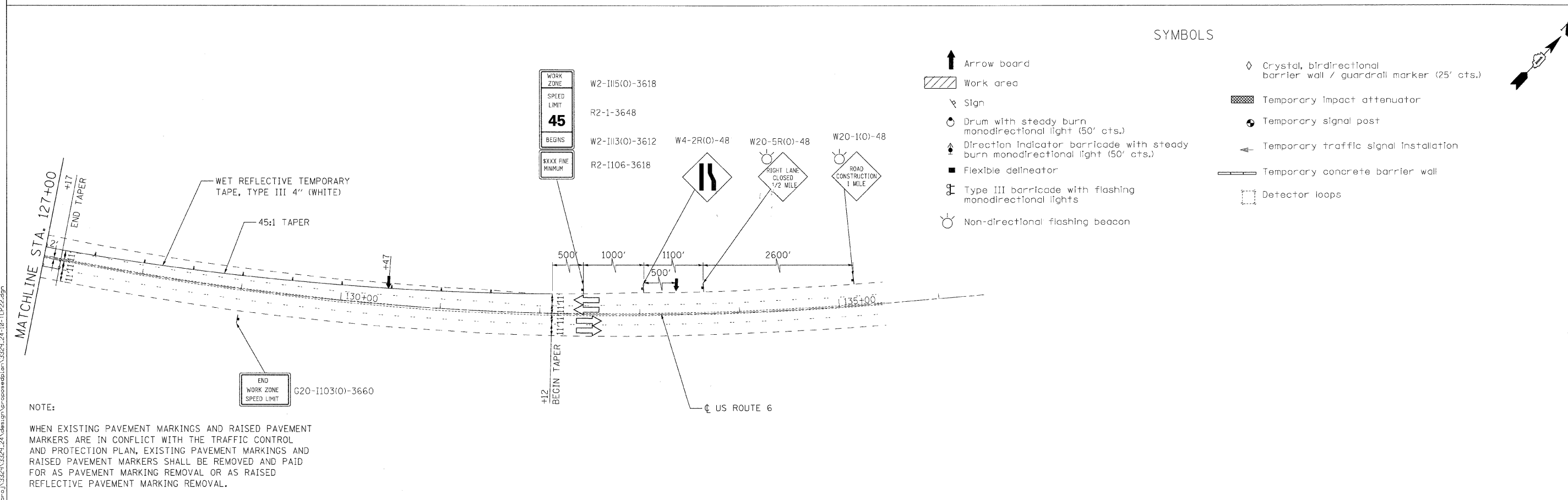


PLAN	REVISIONS	DATE
NOTE BOOK	BY	
NO.	CHECKED	
	AT	
	ON	
	NO.	
	FILE NAME	



PROFILE	REVISIONS	DATE
NOTE BOOK	BY	
NO.	CHECKED	
	AT	
	ON	
	NO.	
	FILE NAME	



SYMBOLS

- Arrow board
- Work area
- Sign
- Drum with steady burn monodirectional light (50' cts.)
- Direction indicator barricade with steady burn monodirectional light (50' cts.)
- Flexible delineator
- Type III barricade with flashing monodirectional lights
- Non-directional flashing beacon
- Crystal, bidirectional barrier wall / guardrail marker (25' cts.)
- Temporary impact attenuator
- Temporary signal post
- Temporary traffic signal installation
- Temporary concrete barrier wall
- Detector loops

NOTE:
 WHEN EXISTING PAVEMENT MARKINGS AND RAISED PAVEMENT MARKERS ARE IN CONFLICT WITH THE TRAFFIC CONTROL AND PROTECTION PLAN, EXISTING PAVEMENT MARKINGS AND RAISED PAVEMENT MARKERS SHALL BE REMOVED AND PAID FOR AS PAVEMENT MARKING REMOVAL OR AS RAISED REFLECTIVE PAVEMENT MARKING REMOVAL.

Ciorba Group, Inc.
 CONSULTING ENGINEERS
 5507 North Cumberland Avenue, Suite 402
 Chicago, Illinois 60656
 Tel. 773.775.4009 Fax 773.775.4014

USER NAME = jcolemen	DESIGNED - JCC	REVISED -
	DRAWN - JCC	REVISED -
PLOT SCALE = 50:0000' / IN.	CHECKED - MJL	REVISED -
PLOT DATE = 7/8/2008	DATE - 07/09/2008	REVISED -

**STATE OF ILLINOIS
 DEPARTMENT OF TRANSPORTATION**

**FAU 0318 /US ROUTE 6 (RAILROAD AVENUE)
 OVER I & M CANAL
 TRAFFIC CONTROL AND PROTECTION - STAGE 2**

SCALE: 1"=50' SHEET NO. 2 OF 2 SHEETS STA. TO STA.

F.A.U. RTE.	SECTION	COUNTY	TOTAL SHEETS	SHEET NO.
0318	DB-1-R-B	WILL	40	10
CONTRACT NO. 60D88				
FED. ROAD DIST. NO. - ILLINOIS FED. AID PROJECT				