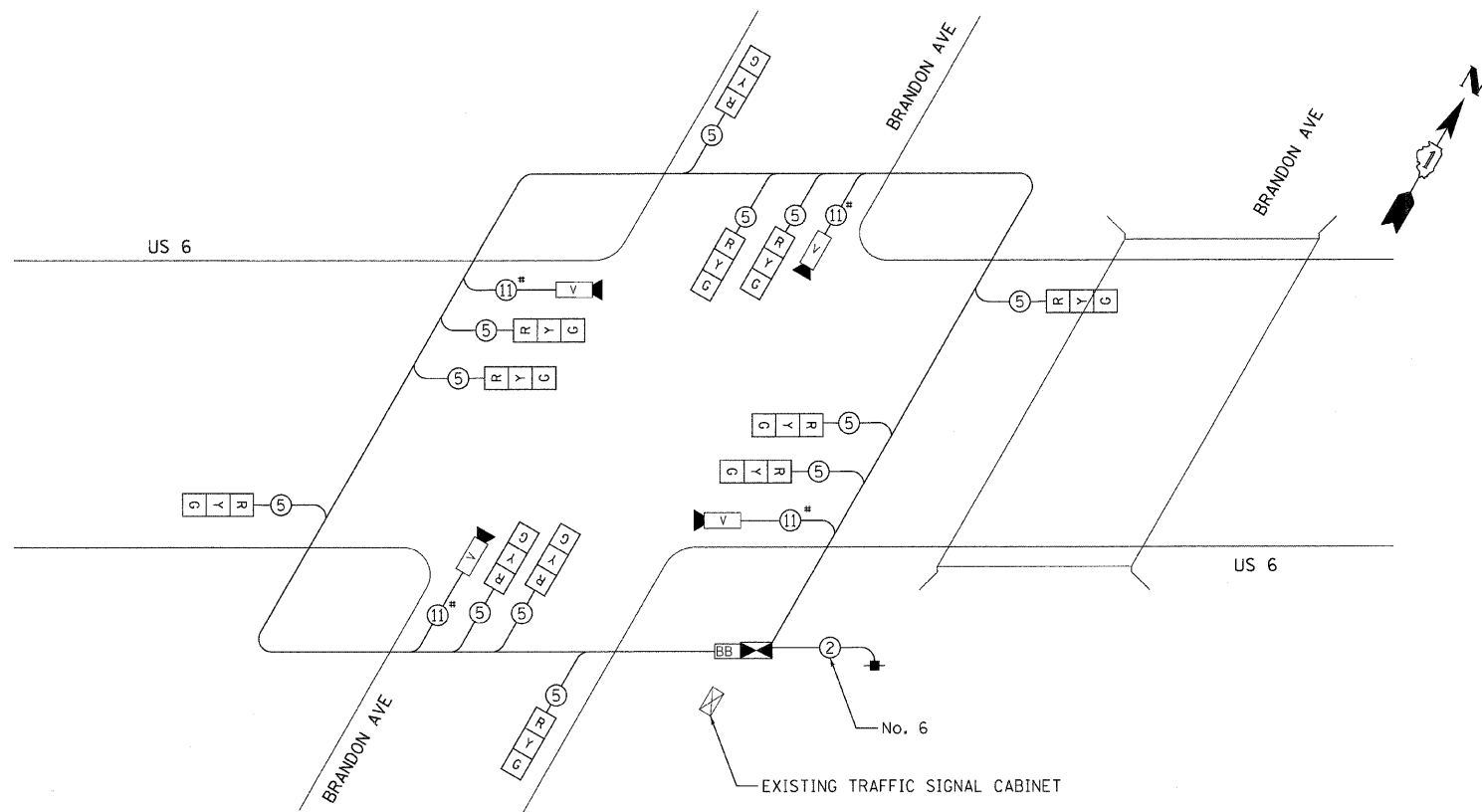


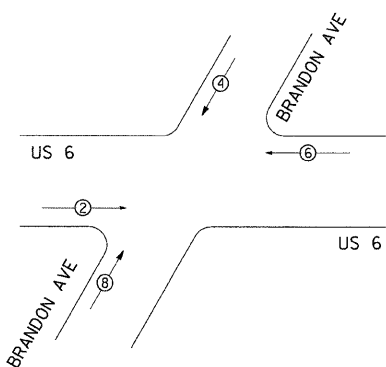
**NOTES FOR TEMPORARY TRAFFIC SIGNALS**

1. ALL CONTROL EQUIPMENT INCLUDING EMERGENCY PRE-EMPTION AND COMMUNICATION DEVICES FOR THE TEMPORARY TRAFFIC SIGNAL(S) SHALL BE FURNISHED BY THE CONTRACTOR, EVP WILL BE PAID FOR SEPARATELY.
2. ONLY CONTROLLERS SUPPLIED BY ONE OF THE DISTRICT APPROVED CLOSED LOOP EQUIPMENT MANUFACTURERS WILL BE APPROVED FOR USE AT TEMPORARY SIGNAL LOCATIONS. ALL CONTROLLERS USED FOR TEMPORARY TRAFFIC SIGNALS SHALL BE FULLY ACTUATED NEMA MICROPROCESSOR BASED WITH RS232 DATA ENTRY PORTS COMPATIBLE WITH EXISTING MONITORING SOFTWARE APPROVED BY IDOT DISTRICT 1, INSTALLED IN A NEMA TS1 OR TS2 CABINET, ONLY ONE BRAND OF CONTROLLER WILL BE ACCEPTED FOR ANY ONE CONTRACT. A REPRESENTATIVE OF THE TRAFFIC SIGNAL CONTROLLER/CABINET VENDOR/SUPPLIER MUST BE PRESENT AT THE TRAFFIC SIGNAL TURN ON.
3. ALL TRAFFIC SIGNAL SECTIONS AND PEDESTRIAN SIGNAL SECTIONS SHALL BE 12" (300mm), HEADS SHALL BE PLACED AS INDICATED ON THE TEMPORARY TRAFFIC SIGNAL PLAN OR AS DIRECTED BY THE ENGINEER. THE CONTRACTOR SHALL FURNISH ENOUGH CABLE SLACK TO RELOCATED HEADS TO ANY POSITION ON THE SPAN WIRE OR AT LOCATIONS ILLUSTRATED ON THE PLANS FOR CONSTRUCTION STAGING. THE TEMPORARY TRAFFIC SIGNAL SHALL REMAIN IN OPERATION DURING ALL SIGNAL HEAD RELOCATIONS, EACH TEMPORARY TRAFFIC SIGNAL HEAD SHALL HAVE ITS OWN CABLE FROM THE CONTROLLER CABINET TO THE SIGNAL HEAD.
4. ALL EXISTING STREET NAME AND INTERSECTION REGULATORY SIGNS SHALL BE REMOVED FROM EXISTING POLES, RELOCATED AND SECURELY FASTENED TO THE SIGNAL SPAN WIRE OR WOOD POLE AS DIRECTED BY THE ENGINEER.
5. ANY TEMPORARY SIGNAL WITHIN AN EXISTING CLOSED LOOP TRAFFIC SIGNAL SYSTEM SHALL BE INTERCONNECTED TO THAT SYSTEM USING SIMILAR BRAND CONTROL EQUIPMENT.
6. THE TEMPORARY TRAFFIC SIGNAL SHALL HAVE THE SIGNAL HEAD DISPLAYS, SIGNAL HEAD PLACEMENTS AND CONTROLLER PHASING MATCH THE EXISTING TRAFFIC SIGNAL AT THE TIME OF THE TURN ON, IF NO TRAFFIC STAGING IS IN PLACE OR WILL NOT BE STAGED ON THE DAY OF THE TURN ON.
7. 24" WHITE STOP BAR TO BE INSTALLED AFTER THE INSTALLATION AND IMPLEMENTATION OF THE TEMPORARY TRAFFIC SIGNALS.
8. THE VIDEO CAMERA VENDOR/SUPPLIER REPRESENTATIVE WILL ASSIST THE CONTRACTOR IN THE EQUIPMENT SETUP/PLACEMENT OF CAMERAS AND WILL BE PRESENT AT THE TRAFFIC SIGNAL TURN ON.



\* NOTE: OR AS SPECIFIED BY CAMERA VENDOR

**CONTROLLER SEQUENCE**



**PHASE DESIGNATION**

- LEGEND**
- (with horizontal line) DUAL ENTRY PHASE
  - ◇ (with horizontal line) OVERLAP
  - (with vertical line) PEDESTRIAN PHASE
  - NUMBER REFERS TO ASSOCIATED PHASE

| SUMMARY OF QUANTITIES |                                       |      |          |
|-----------------------|---------------------------------------|------|----------|
| ITEM                  | DESCRIPTION                           | UNIT | QUANTITY |
| 89000100              | TEMPORARY TRAFFIC SIGNAL INSTALLATION | EACH | 1        |

**TEMPORARY CABLE DIAGRAM LEGEND**

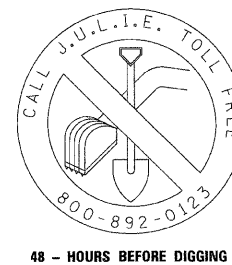
- [R] TEMPORARY TRAFFIC SIGNAL SECTION OR PEDESTRIAN SIGNAL SECTION 12" (300mm)
- [C] TEMPORARY CONTROLLER CABINET
- [■] TEMPORARY SERVICE INSTALLATION
- ⑤ INDICATES NUMBER OF CONDUCTORS IN CABLE, ALL CONDUCTORS TO BE NUMBER 14 AWG WIRE UNLESS OTHERWISE NOTED.
- [▶] EMERGENCY VEHICLE LIGHT DETECTOR
- [▶] CONFIRMATION BEACON
- (with vertical line) PEDESTRIAN PUSHBUTTON DETECTOR
- [□] VEHICLE DETECTOR, INDUCTION LOOP
- [M] 12" (300mm) PEDESTRIAN SIGNAL SECTION
- [M] MICROWAVE VEHICLE SENSOR
- [V] VIDEO DETECTOR SENSOR
- [C] CLOSED CIRCUIT TV
- [BB] BATTERY - BACK UP
- [T] TELEPHONE CONNECTION

**NOTE:**  
EQUIPMENT GROUND CONDUCTOR (GREEN COLOR CODED) SPLICE TO FRAME AND COVER IS REQUIRED FOR ALL HANDHOLES OR DOUBLE HANDHOLES THAT CARRY SIGNAL CABLES AND SERVICE CABLES.

| I.D.O.T. TRAFFIC SIGNAL INSTALLATION ELECTRICAL SERVICE REQUIREMENTS |           |                 |             |             | TOTAL WATTAGE |
|--|-----------|-----------------|-------------|-------------|---------------|
| TYPE   | NO. LAMPS | WATTAGE INCAND. | WATTAGE LED | % OPERATION |               |
| SIGNAL (RED)   | 12        | 135             | 17          | 0.50        | 102           |
| (YELLOW)   | 12        | 135             | 25          | 0.25        | 75            |
| (GREEN)  | 12        | 135             | 15          | 0.25        | 45            |
| ARROW  |           | 135             | 12          | 0.10        |               |
| PED. SIGNAL  |           | 90              | 25          | 1.00        |               |
| CONTROLLER   | 1         | 100             | 100         | 1.00        | 100.0         |
| ILLUM. SIGN  |           | 84              |             | 0.05        |               |
| VIDEO CAMERA   | 4         |                 | 45          | 1.00        | 180           |
| <b>TOTAL =</b>   |           |                 |             |             | <b>502</b>    |

ENERGY COSTS TO: ILLINOIS DEPARTMENT OF TRANSPORTATION  
201 WEST CENTER COURT  
SCHAUMBURG, ILLINOIS 60196-1096  
CONTACT: KATHY NYSTROM  
PHONE: (847) 816-5489  
COMPANY: COM. ED.

| FOUNDATION (DEPTH) | FT. (m)  | CABLE SLACK      | FT. (m)   | FT. (m)           |
|--------------------|----------|------------------|-----------|-------------------|
| TYPE A - POST      | 4 (1.2)  | HANDHOLE         | 6.5 (2.0) | ALL FOUNDATIONS   |
| D - CONTROLLER     | 4 (1.2)  | DOUBLE HANDHOLE  | 13 (4.0)  | MAST ARM (L) POLE |
| E - M. ARM POLE    |          | SIGNAL POST      | 2 (1.0)   | (6m+L-0.6m)=      |
| 24" (600mm)        | 10 (3.0) | CONTROLLER CAB.  | 1 (0.5)   | BRACKET MOUNTED   |
| 30" (750mm)        | 15 (4.6) | FIBER OPTIC      | 13 (4.0)  | PED. PUSHBUTTON   |
|                    |          | ELECTRIC SERVICE | 1 (0.5)   | ELECTRIC SERVICE  |
|                    |          | GROUND CABLE     | 1 (0.5)   | SERVICE TO GROUND |
|                    |          |                  |           | POST MOUNTED      |



**Ciorba Group, Inc.**  
CONSULTING ENGINEERS  
5507 North Cumberland Avenue, Suite 402  
Chicago, Illinois 60656  
Tel. 773.775.4008 Fax 773.775.4014

|  |                   |               |
|--|-------------------|---------------|
| USER NAME = joolaman   | DESIGNED - RBG    | REVISED - --- |
| PLOT SCALE = 50.0000 "/> <td>CHECKED - MJL</td> <td>REVISED - ---</td> | CHECKED - MJL     | REVISED - --- |
| PLOT DATE = 7/8/2008   | DATE - 07/09/2008 | REVISED - --- |

**STATE OF ILLINOIS  
DEPARTMENT OF TRANSPORTATION**

**FAU 0318 /US ROUTE 6 (RAILROAD AVENUE)  
OVER I & M CREEK  
TEMPORARY CABLE PLAN & TEMPORARY PHASE DESIGNATION DIAGRAM**  
SCALE: N.T.S. SHEET NO. OF SHEETS STA. TO STA.

| F.A.P. RTE.        | SECTION  | COUNTY | TOTAL SHEETS                                  | SHEET NO. |
|--------------------|----------|--------|---|-----------|
| 0318               | DB-1-R-B | WILL   | 40  | 15        |
| CONTRACT NO. 60D88 |          |        | FED. ROAD DIST. NO. ILLINOIS FED. AID PROJECT |           |

FILE NAME = r:\nproj\33293\33293\_24\design\proposals\plan\3329\_24-10-tempo\sign\cabl\esd\plan.dgn