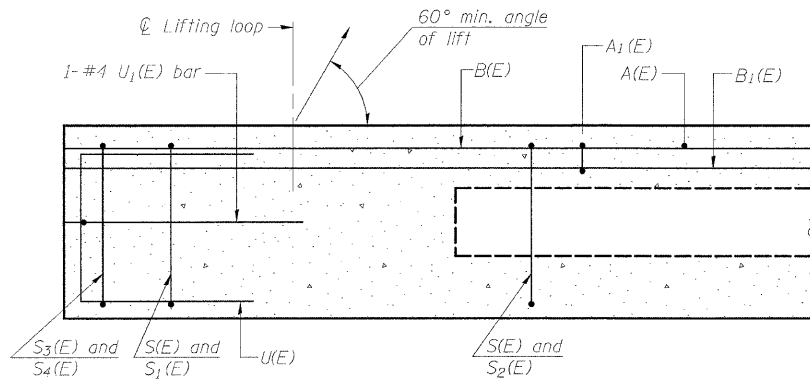
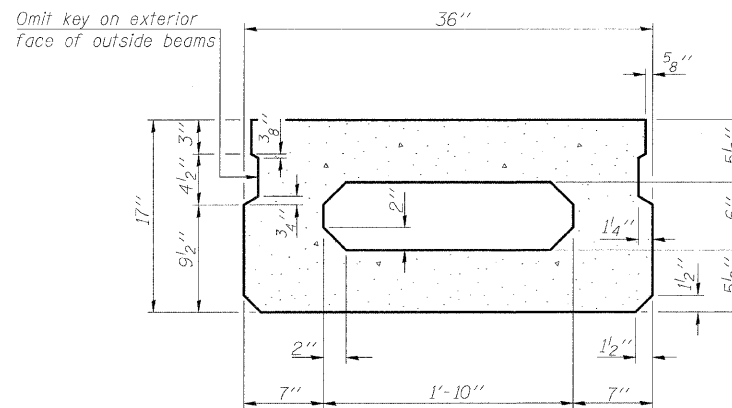


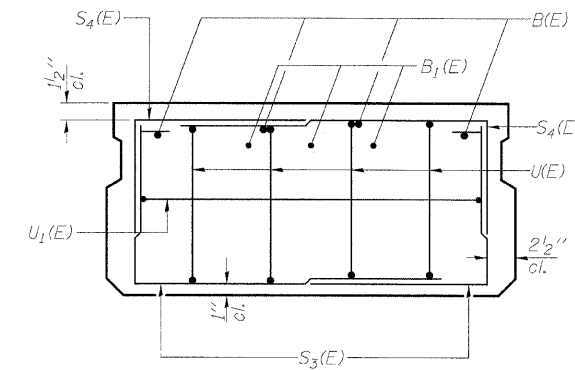
STATE OF ILLINOIS
DEPARTMENT OF TRANSPORTATION



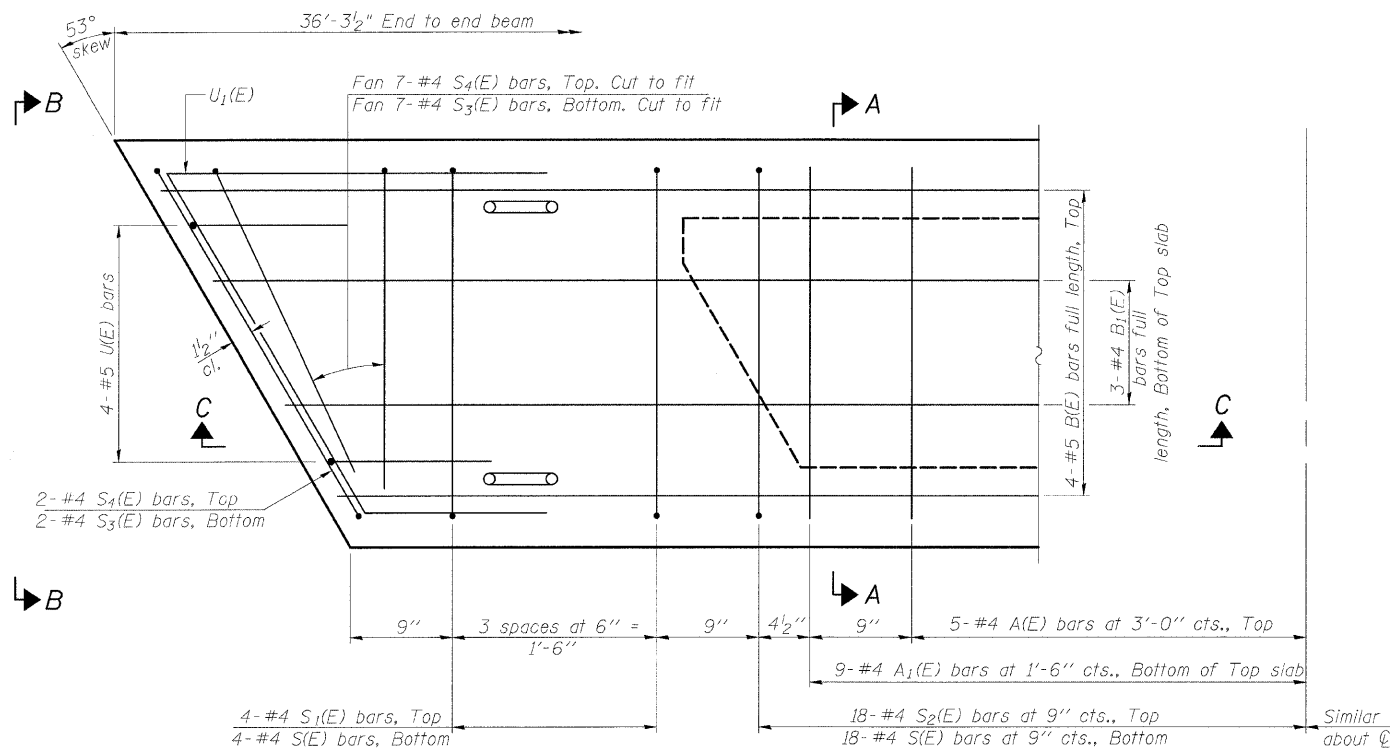
SECTION C-C



SECTION A-A
(Showing dimensions)

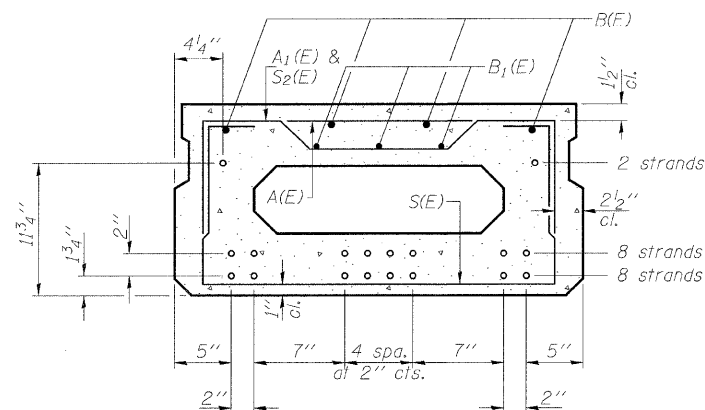


VIEW B-B



PLAN VIEW

Note: Spacing of S(E) and S2(E) bars may be adjusted up to 4" in the immediate area of the transverse tie diaphragms to miss the block outs for the transverse ties.



SECTION A-A
(Showing reinforcement and permissible strand locations)

Note: Place the number of strands specified in each row symmetrically about the centerline of beam in the permissible strand locations shown.

BAR LIST
ONE BEAM ONLY

(For information only)

Bar	No.	Size	Length	Shape
A(E)	10	#4	2'-7"	—
A1(E)	18	#4	2'-11"	—
B(E)	4	#5	36'-0"	—
D1(E)	49	#4	4'-7"	—
B1(E)	3	#4	36'-0"	—
S(E)	44	#4	5'-9"	—
S1(E)	8	#4	4'-3"	—
S2(E)	36	#4	4'-6"	—
S3(E)	18	#4	5'-9"	—
S4(E)	18	#4	5'-4"	—
U(E)	8	#5	3'-8"	—
U1(E)	2	#4	10'-0"	—

Note: See sheet S-5 for additional details and Bill of Material.

* Exterior Beams only

17" X 36" PPC DECK BEAM
US 6 (RAILROAD AVE.) OVER I & M CANAL
STA. 112+00
S.N. 099-0098

DESIGNED	B. Sauter
CHECKED	E. Mroczek
DRAWN	R. Danley
CHECKED	B. Sauter



Ciorba Group, Inc.
CONSULTING ENGINEERS
5507 North Cumberland Avenue, Suite 402 Chicago, Illinois 60656
Tel. 773.775.4009 Fax 773.775.4014 Email chicago@ciorba.com

PD-1736-R 5-16-08

SHEET NO. S-4	F.A.U RTE.	SECTION	COUNTY	TOTAL SHEETS	SHEET NO.
	0318	DB-1-R-B	WILL	40	26
S-14 SHEETS	CONTRACT NO. 60D88				
FED. ROAD DIST. NO.		ILLINOIS FED. AID PROJECT			