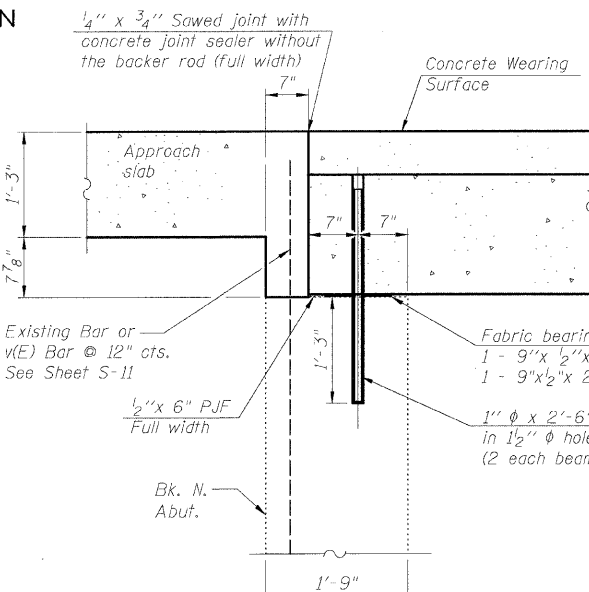
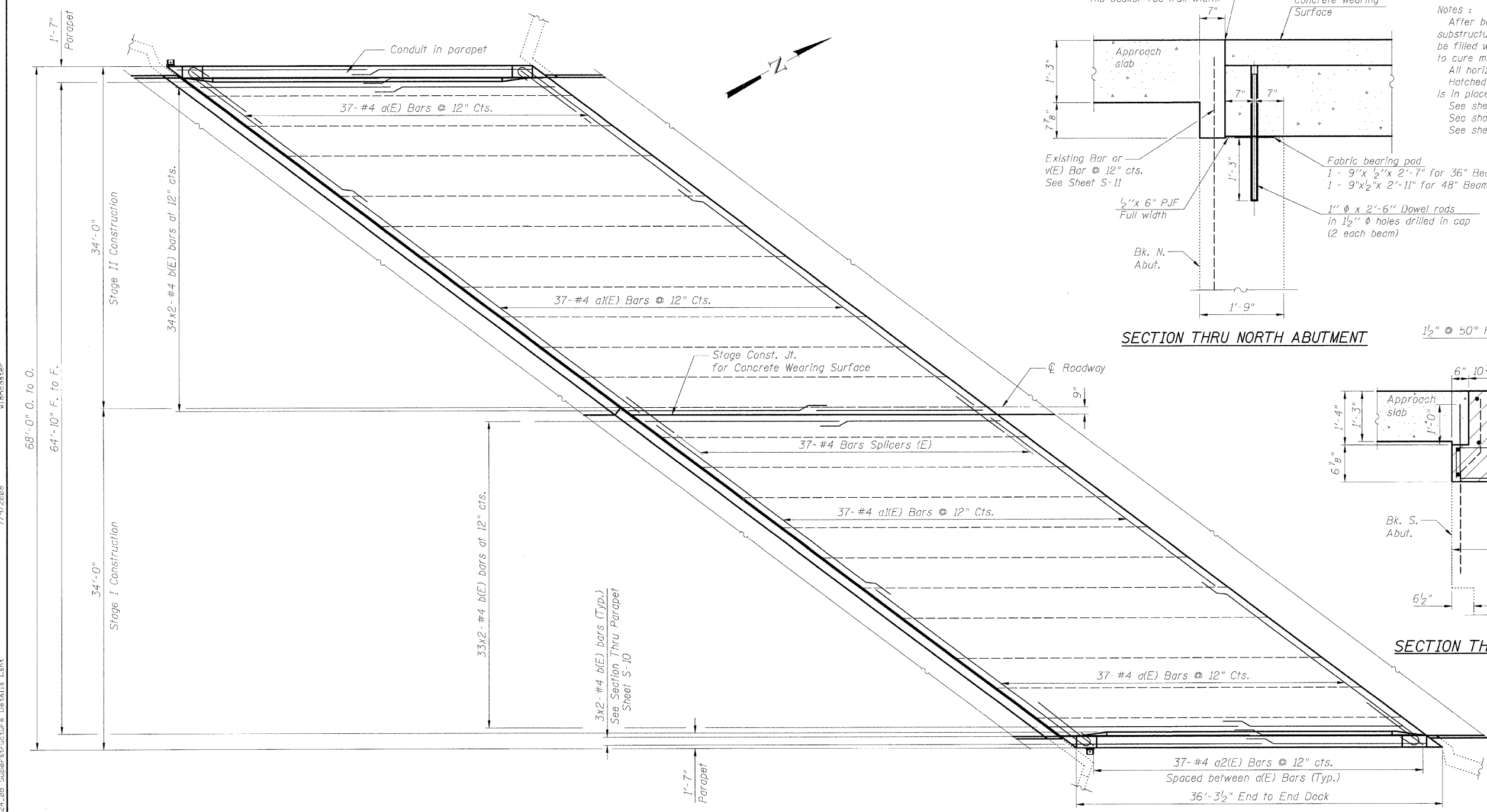
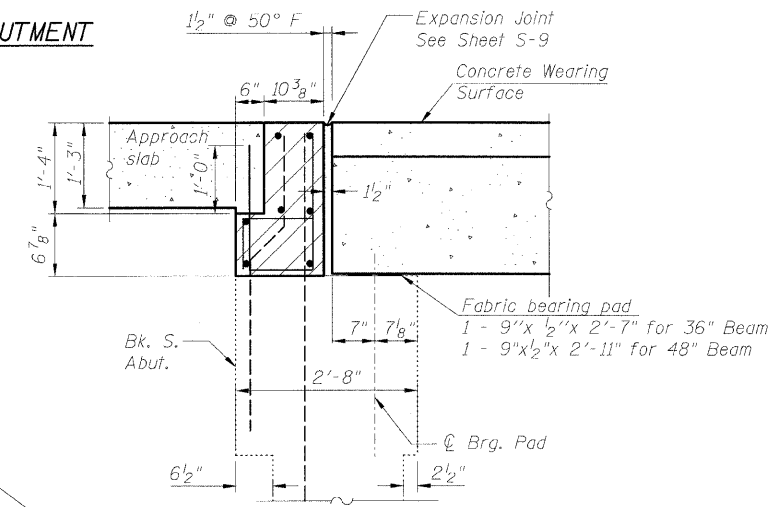


STATE OF ILLINOIS
DEPARTMENT OF TRANSPORTATION

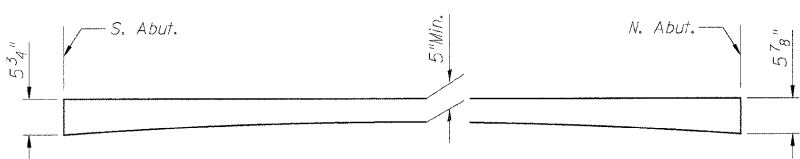


SECTION THRU NORTH ABUTMENT



SECTION THRU SOUTH ABUTMENT

CONCRETE WEARING SURFACE - PLAN



REINFORCED CONCRETE WEARING SURFACE PROFILE

LAP LENGTH
4 bars - 1'-8"

Notes:
After beams have been erected, holes shall be drilled into substructure and anchor dowels placed. Dowel holes shall be filled with non-shrink grout to top of beam and allowed to cure min. 24 hrs. prior to grouting the shear keys.
All horizontal dimensions are at right angles to beam ends. Hatched area to be poured after concrete wearing surface is in place.
See sheet S-5 & S-7 for bearing pad details.
See sheets S-11 & S-13 for Abutment reinforcement details.
See sheet S-10 for Bill of Material

SUPERSTRUCTURE DETAILS 1
US 6 (RAILROAD AVE.) OVER I & M CANAL
STA. 112+00
S.N. 099-0098

SHEET NO. S-8	F.A.U. RTE.	SECTION	COUNTY	TOTAL SHEETS	SHEET NO.
	0318	DB-1-R-B	WILL	40	30
S-14 SHEETS	CONTRACT NO. 60D88				
FED. ROAD DIST. NO.		ILLINOIS FED. AID PROJECT			

DESIGNED	B. Sauter
CHECKED	E. Mroczek
DRAWN	R. Danley
CHECKED	B. Sauter

CG **Giorba Group, Inc.**
CONSULTING ENGINEERS
5507 North Cumberland Avenue, Suite 402 Chicago, Illinois 60656
Tel. 773.775.4005 Fax 773.775.4014 Email chicago@giorba.com

7/9/2008 7:19:24 AM \\design\structural\cad\shd\3329_24_08 Superstructure Details 1.sht