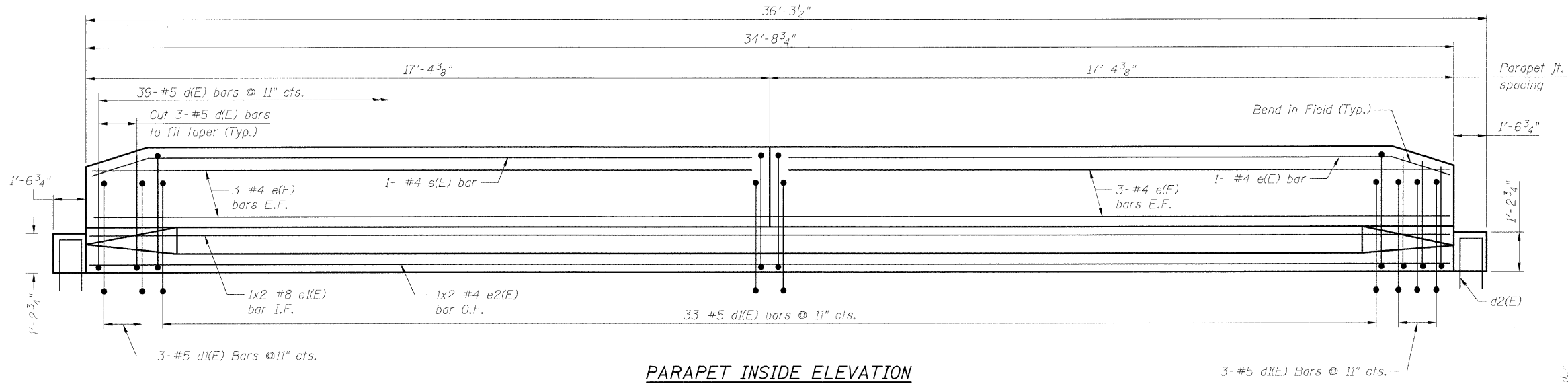
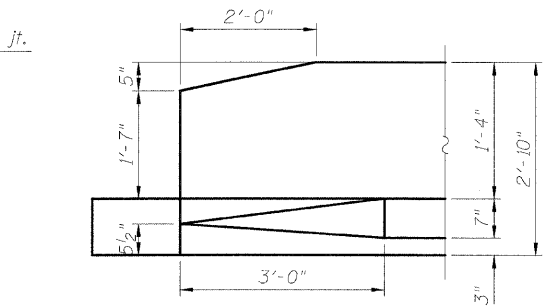


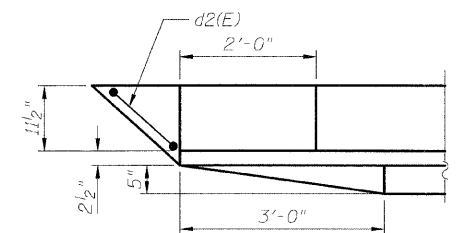
STATE OF ILLINOIS  
DEPARTMENT OF TRANSPORTATION



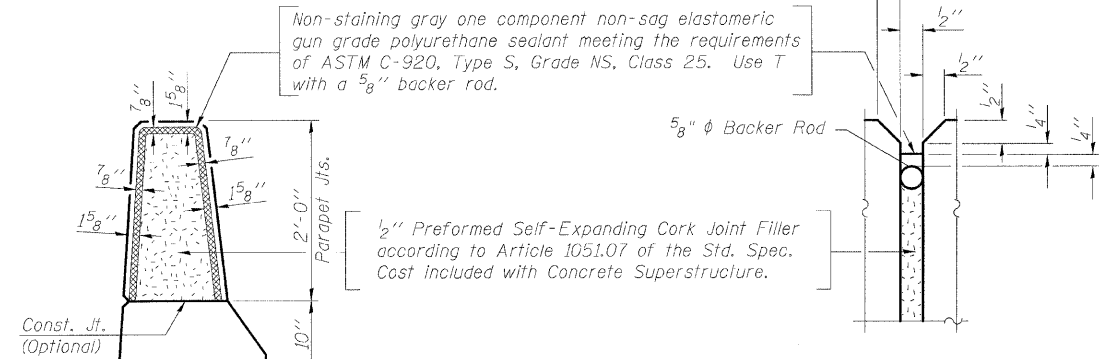
**PARAPET INSIDE ELEVATION**  
(East side shown)  
(West side similar)



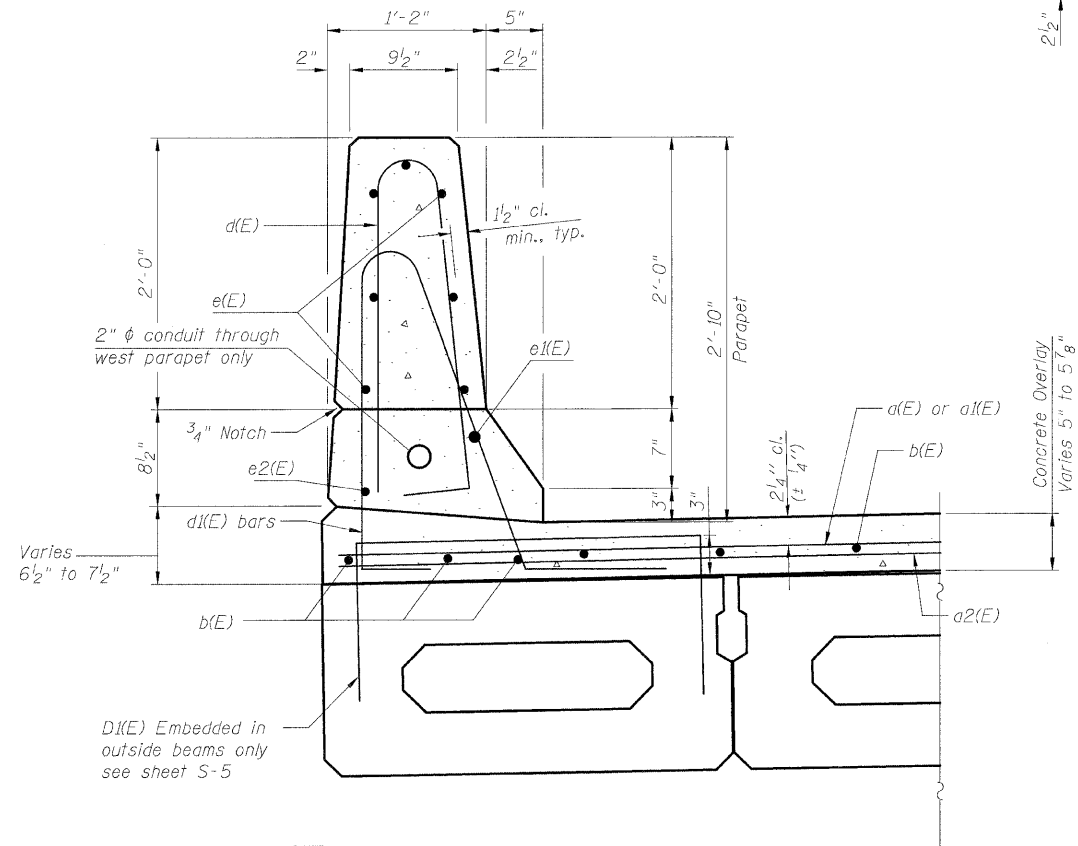
**ELEVATION**



**PLAN**  
**PARAPET END DETAILS**



**PARAPET JOINT DETAILS**



**SECTION THRU PARAPET**

**BILL OF MATERIAL**

Bar	No.	Size	Length	Shape
d(E)	74	#4	28'-10"	U
a1(E)	74	#4	30'-0"	—
a2(E)	74	#4	6'-0"	—
b(E)	146	#4	22'-1"	—
d(E)	78	#5	5'-7"	U
d1(E)	78	#5	5'-11"	—
d2(E)	4	#5	3'-6"	—
c(E)	28	#4	17'-1"	—
e1(E)	4	#8	19'-6"	—
e2(E)	4	#4	18'-1"	—
Reinforcement Bars, Epoxy Coated			Pound	6,880
Concrete Superstructure			Cu. Yd.	7.8
Concrete Wearing Surface			Sq. Yd.	300
Bar Splicers			Each	37
Bridge Deck Grooving			Sq. Yd.	263
Protective Coat			Sq. Yd.	321
Preformed Joint Strip Seal			Foot	113

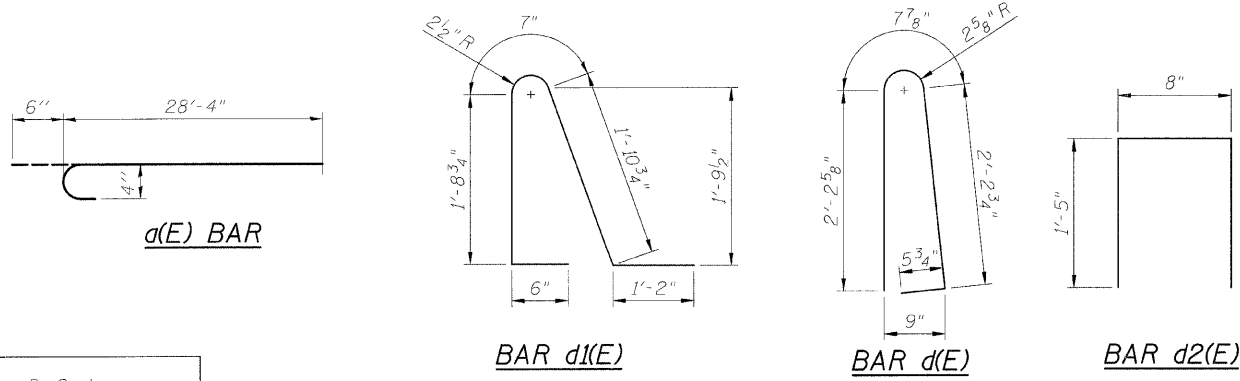
**PARAPET DETAILS**  
**US 6 (RAILROAD AVE.) OVER I & M CANAL**  
**STA. 112+00**  
**S.N. 099-0098**

SHEET NO. S-10	F.A.U. RTE.	SECTION	COUNTY	TOTAL SHEETS	SHEET NO.
	0318	DB-1-R-B	WILL	40	32
S-14 SHEETS	CONTRACT NO. 60D88				
FED. ROAD DIST. NO.		ILLINOIS FED. AID PROJECT			

- Notes:
- Bars indicated thus 1x2- #5 etc. Indicates 1 line of bars with 2 lengths per line.
  - Reinforcement Bars designated (E) shall be epoxy coated.
  - Cost of conduit included in cost of concrete superstructure.

**LAP LENGTH**

#4 bars	1'-8"
#8 bars	4'-6"



DESIGNED	B. Sauter
CHECKED	E. Mroczek
DRAWN	R. Danley
CHECKED	B. Sauter

**Ciorba Group, Inc.**  
CONSULTING ENGINEERS  
5507 North Cumberland Avenue, Suite 402 Chicago, Illinois 60656  
Tel. 773.775.4009 Fax 773.775.4014 Email chicagociorba.com

7/1/2008 wlencaester na:\proj\3329\3329\_24\design\structural\lead\sh1\3329\_24\_10\_Parapet\_Details.sh1