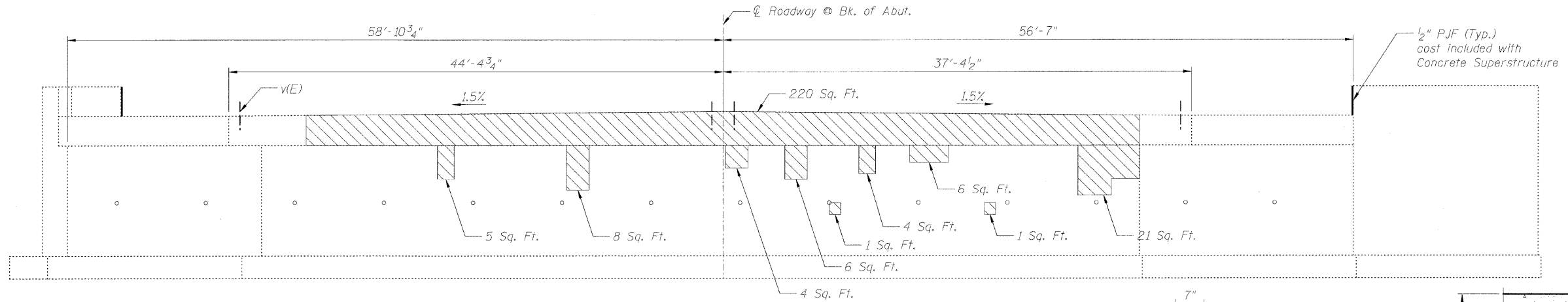
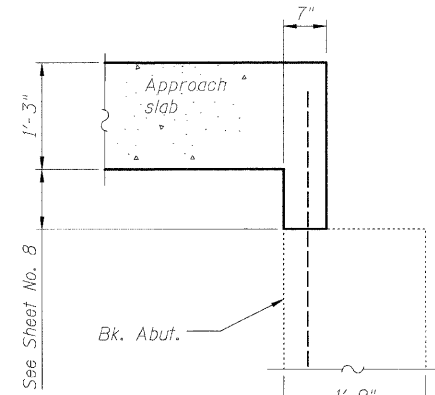


STATE OF ILLINOIS  
DEPARTMENT OF TRANSPORTATION

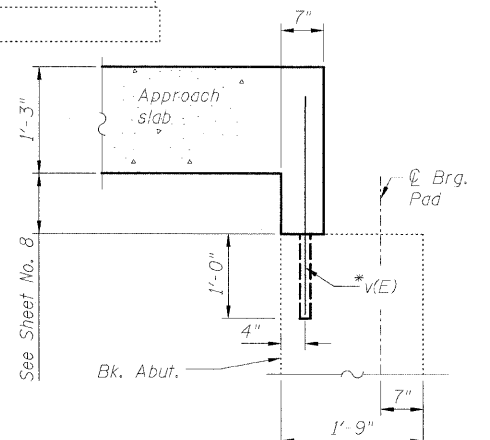


**ELEVATION**

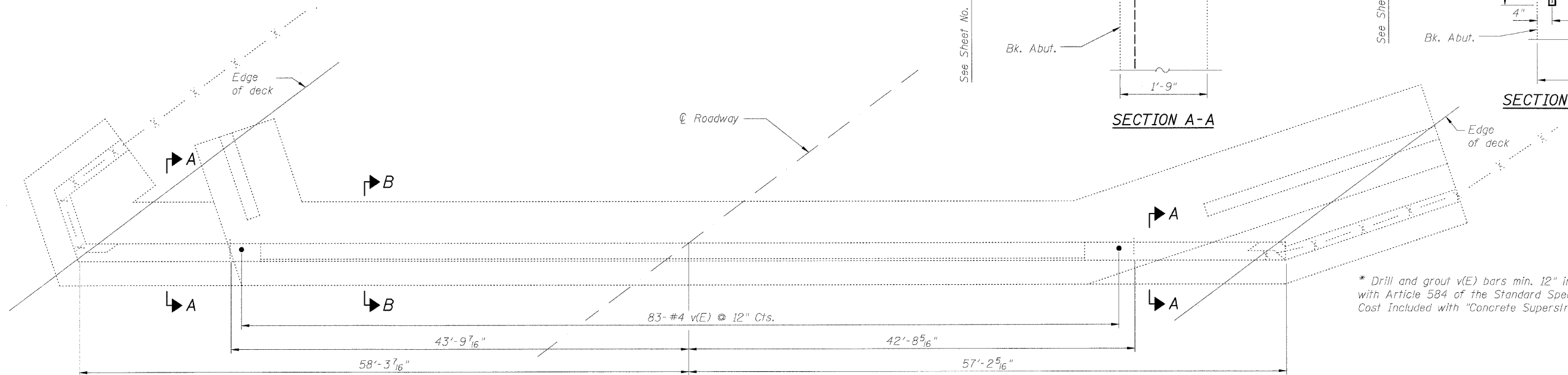
Looking North



**SECTION A-A**



**SECTION B-B**



**PLAN**

**BILL OF MATERIAL**

Bar	No.	Size	Length	Shape
v(E)	83	#4	2'-11"	—
Reinforcement Bars, Epoxy Coated			Pound	160
Structural Repair of Concrete (Depth Equal to or Less than 5")			Cu. Yd.	276

**LEGEND**

Structural Repair of Concrete (Depth equal to or less than 5")

**NOTE:**

Repairs of the existing Abutments shall include but not be limited to the areas shown. The actual areas to be determined by the engineer at the time of construction.

**NORTH ABUTMENT**  
**US 6 (RAILROAD AVE.) OVER I & M CANAL**  
**STA. 112+00**  
**S.N. 099-0098**

SHEET NO. S-11	F.A.U RTE.	SECTION	COUNTY	TOTAL SHEETS	SHEET NO.
	0318	DB-1-R-B	WILL	40	33
S-14 SHEETS		CONTRACT NO.		60D88	
FED. ROAD DIST. NO.		ILLINOIS FED. AID PROJECT			

DESIGNED	B. Sauter
CHECKED	E. Mroczek
DRAWN	R. Donley
CHECKED	B. Sauter



**Giorba Group, Inc.**  
**CONSULTING ENGINEERS**  
5507 North Cumberland Avenue, Suite 402 Chicago, Illinois 60656  
Tel. 773.775.4009 Fax 773.775.4014 Email chicago@giorba.com

7/9/2008 m:\pro\3329\3329\_24\design\structural\lead\sh1\3329\_24\_11 North Substructure Repairs.sht