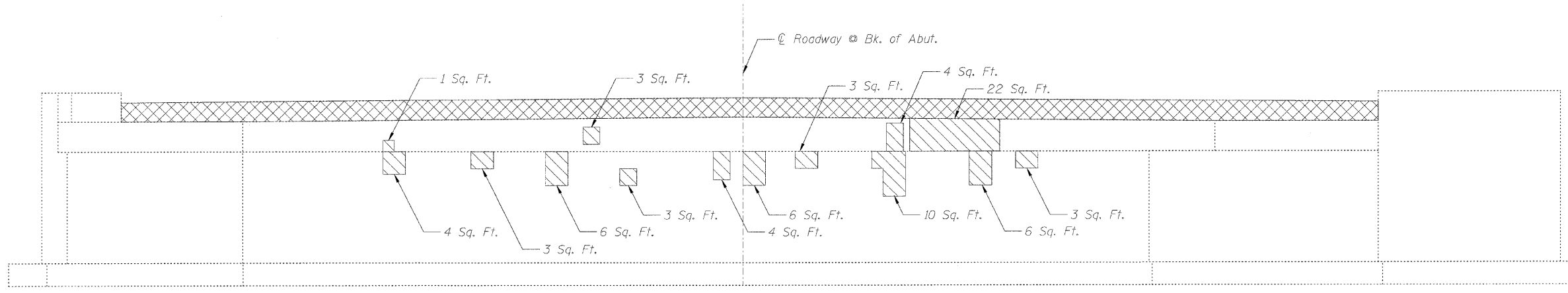
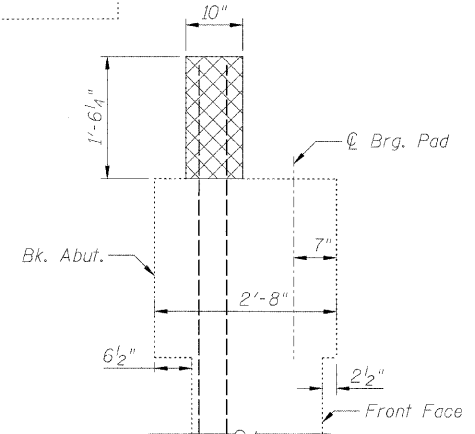


STATE OF ILLINOIS
DEPARTMENT OF TRANSPORTATION

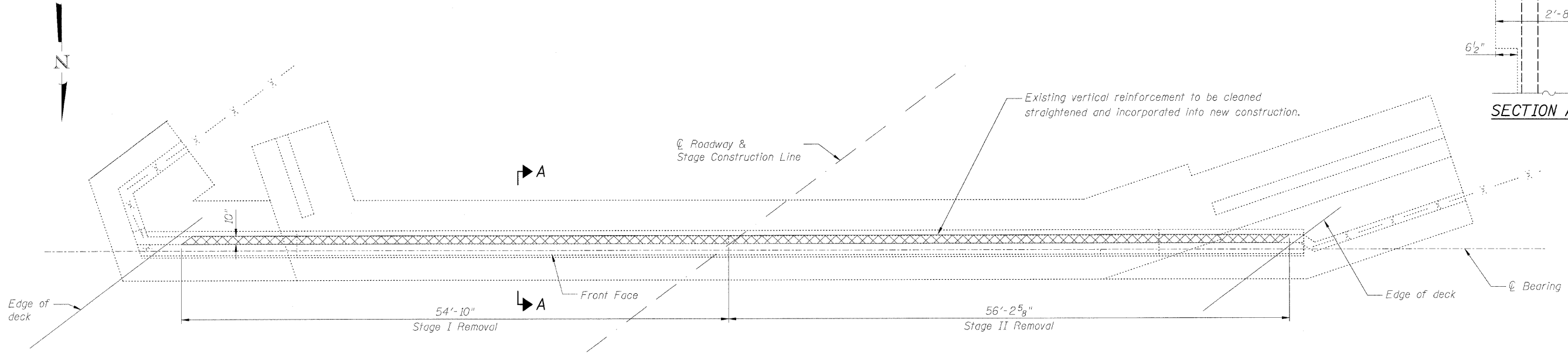


ELEVATION

Looking South



SECTION A-A



PLAN

BILL OF MATERIAL

| Item | Unit | Quantity |
|--|---------|----------|
| Structural Repair of Concrete (Depth Equal to or Less than 5") | Sq. Ft. | 78 |
| Concrete Removal | Cu. Yd. | 6.1 |

NOTE:
Repairs of the existing Abutments shall include but not be limited to the areas shown. The actual areas to be determined by the Engineer at the time of construction.

LEGEND

- Structural Repair of Concrete (Depth equal to or less than 5")
- Concrete Removal

**SOUTH ABUTMENT
REMOVAL AND REPAIR
US 6 (RAILROAD AVE.) OVER I & M CANAL
STA. 112+00
S.N. 099-0098**

| |
|---------------------------|
| DESIGNED <i>B. Sauter</i> |
| CHECKED <i>E. Mroczek</i> |
| DRAWN <i>R. Danley</i> |
| CHECKED <i>B. Sauter</i> |

CG **Ciorba Group, Inc.**
CONSULTING ENGINEERS
5507 North Cumberland Avenue, Suite 402 Chicago, Illinois 60656
Tel. 773.775.4009 Fax 773.775.4014 Email chicago@ciorba.com

| | | | | | |
|---------------------|-------------|---------------------------|--------|--------------|-----------|
| SHEET NO. S-12 | F.A.U. RTE. | SECTION | COUNTY | TOTAL SHEETS | SHEET NO. |
| | 0318 | DB-1-R-B | WILL | 40 | 34 |
| S-14 SHEETS | | CONTRACT NO. | | 60D88 | |
| FED. ROAD DIST. NO. | | ILLINOIS FED. AID PROJECT | | | |

7/9/2008
na:\pro\3329\3329_24\design\structural\ced\ah\3329_24_12_South_Substructure_Repairs.sht