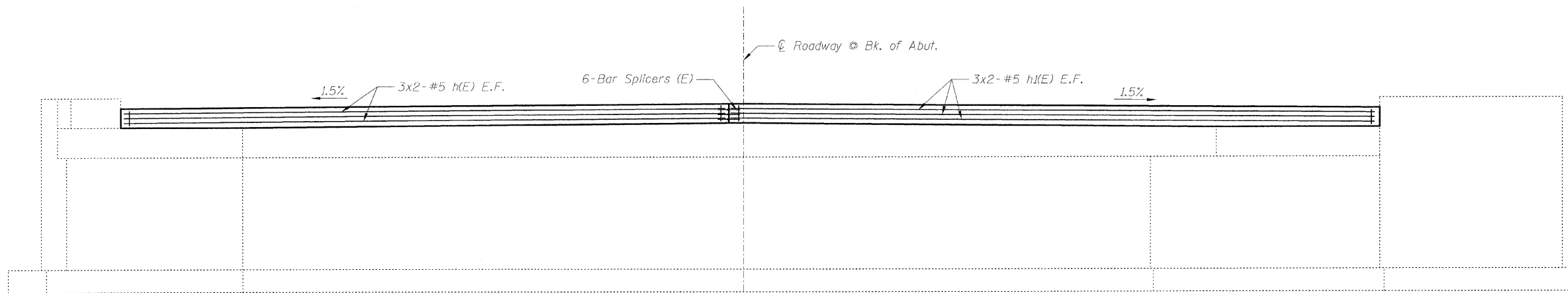
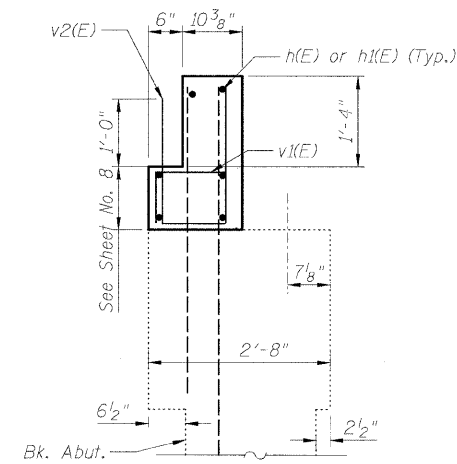


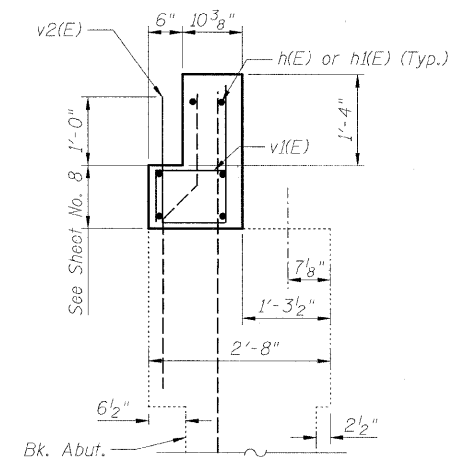
STATE OF ILLINOIS
DEPARTMENT OF TRANSPORTATION



ELEVATION
Looking South



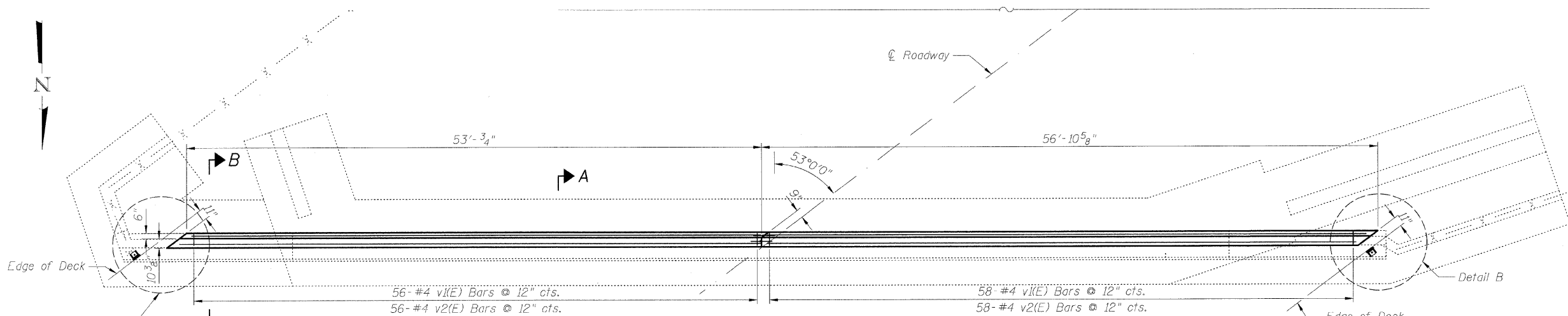
SECTION A-A



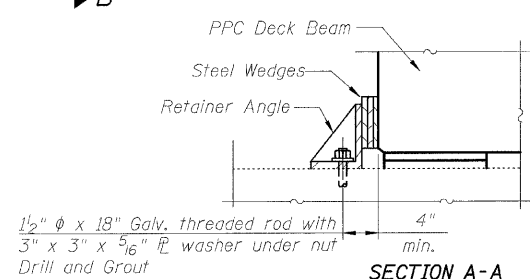
SECTION B-B

NOTES:

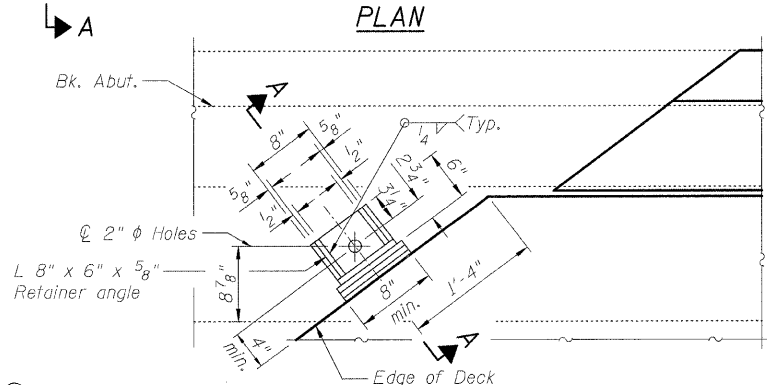
- Existing vertical reinforcement to be cleaned, straightened and incorporated into new construction.
- Bars indicated 1x2-#5 etc. Indicates 1 line of bars with 2 lengths per line.



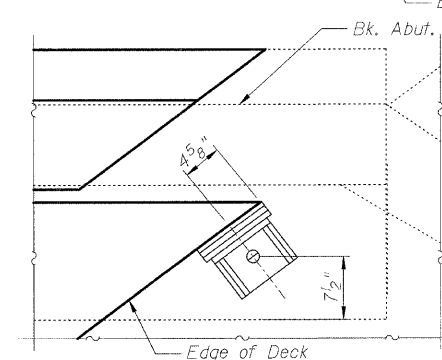
PLAN



SECTION A-A

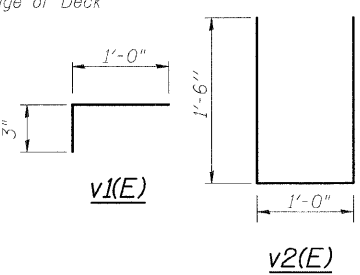


DETAIL A



RETAINER DETAIL

DETAIL B



BILL OF MATERIAL

Bar	No.	Size	Length	Shape	
h(E)	12	#5	28'-2"	—	
h1(E)	12	#5	29'-9"	—	
v1(E)	114	#4	1'-3"	U	
v2(E)	114	#4	4'-0"	T	
Reinforcement Bars, Epoxy Coated				Pound	1,130
Concrete Superstructure				Cu. Yd.	8.1
Bar Splicers				Each	6

SOUTH ABUTMENT
US 6 (RAILROAD AVE.) OVER I & M CANAL
STA. 112+00
S.N. 099-0098

DESIGNED	B. Sauter
CHECKED	E. Mroczek
DRAWN	R. Danley
CHECKED	B. Sauter



Giorba Group, Inc.
CONSULTING ENGINEERS

5507 North Cumberland Avenue, Suite 402 Chicago, Illinois 60656
Tel. 773.775.4009 Fax 773.775.4014 Email chicago@giorba.com

Cost of retainer and accessories are included with Precast Prestressed Concrete Deck Beams.

SHEET NO. S-13	F.A.U. RTE.	SECTION	COUNTY	TOTAL SHEETS	SHEET NO.
	0318	DB-1-R-B	WILL	40	35
S-14 SHEETS	CONTRACT NO. 60D88				
FED. ROAD DIST. NO.		ILLINOIS FED. AID PROJECT			

7/9/2008 wlaneaster