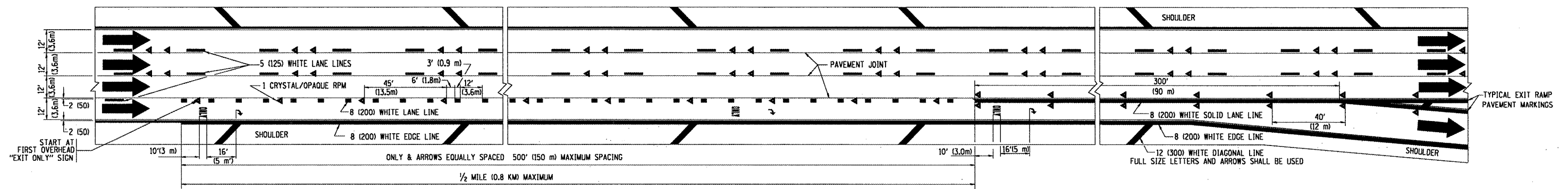
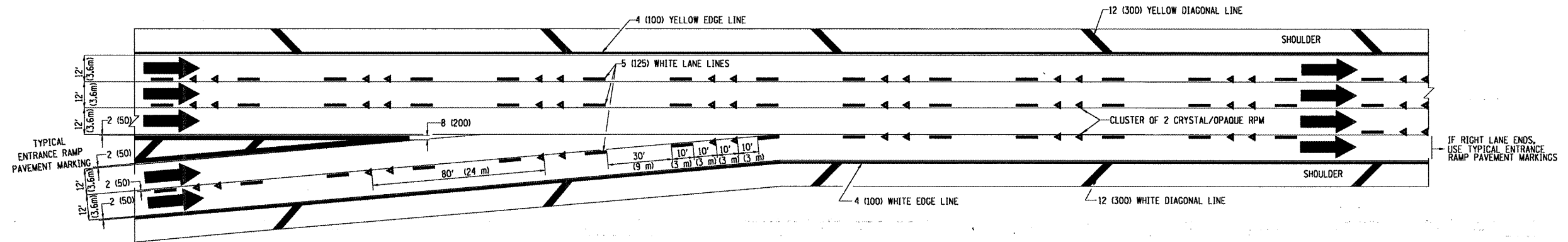


TYPICAL ENTRANCE/EXIT RAMP COMBINATION PAVEMENT MARKINGS



TYPICAL EXIT ONLY LANE PAVEMENT MARKINGS



TYPICAL TWO LANE ENTRANCE RAMP PAVEMENT MARKINGS

Rev. Sheet 8-27-08

FILE NAME = \\dist1\rf2\users\wilgreendp\Desktop\Ramp Details\1012.dgn	USER NAME = wilgreendp	DESIGNED - D.W.S.	REVISED - A.H. 03-96	STATE OF ILLINOIS DEPARTMENT OF TRANSPORTATION	MULTI-LANE FREEWAY PAVEMENT MARKING DETAILS			F.A. RTE. VAR.	SECTION 2008-049 PP	COUNTY COOK & DUP.	TOTAL SHEETS 12	SHEET NO. 10
PLOT SCALE = 100.000' / IN.	CHECKED -	REVISED - J.A.F. 02-06	REVISED - S.P.B. 01-07		SCALE: NONE	SHEET NO. 1 OF 2 SHEETS	STA.	TO STA.	TC-12		CONTRACT NO. 60E98	
PLOT DATE = 8/15/2008	DATE - 01-90	REVISED -	REVISED -		FED. ROAD DIST. NO. 1 ILLINDIS FED. AID PROJECT							