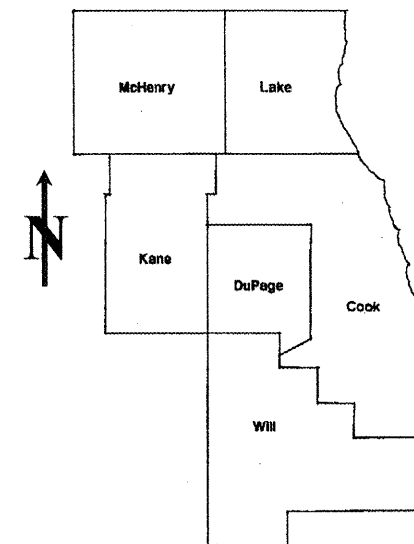


ROUTE	SECTION	COUNTY	TOTAL SHEETS	SHEET NUMBER
VARIOUS	2008-050 PP	COOK	12/2	1

**STATE OF ILLINOIS**  
**DEPARTMENT OF TRANSPORTATION**  
**DIVISION OF HIGHWAYS**  
**DISTRICT ONE**  
**PROPOSED HIGHWAY PLANS**

**CONTRACT NO. 60E99**

D-91-556-08



LOCATION OF IMPROVEMENT INDICATED THUS:

FOR INDEX OF SHEETS SEE SHEET 2

VARIOUS ROUTES  
 SECTION: 2008-050 PP  
 VARIOUS INTERSTATE RAMPS  
 PAVEMENT PATCHING  
 COOK COUNTY  
 C-91-556-08

DISTRICT ONE - DESIGN - PLAN PREPARATION ENGINEER:  
 KEN ENG / (847) 705-4247

**CONTRACT NO. 60E99**

**STATE OF ILLINOIS**  
**DEPARTMENT OF TRANSPORTATION**  
**DIVISION OF HIGHWAYS**

SUBMITTED: JUNE 20, 2008

*Diana M. O'Keefe*  
 DEPUTY DIRECTOR OF HIGHWAYS, REGION ENGINEER

June 27, 2008  
*Eric E. Harn*  
 INTERIM ENGINEER OF DESIGN AND ENVIRONMENT

June 27, 2008  
*Christine M. Reed*  
 DIRECTOR, DIVISION OF HIGHWAYS

**PRINTED BY THE AUTHORITY**  
**OF THE STATE OF ILLINOIS**

**J.U.L.I.E.: JOINT UTILITY LOCATION**  
**INFORMATION FOR EXCAVATION**  
**(312) 744-7000**

2 Rev. 8-27-08

GENERAL NOTES

BEFORE STARTING ANY EXCAVATION, THE CONTRACTOR SHALL CALL "JULIE" AT (800) 892-0123 OR 811 FOR FIELD LOCATIONS OF BURIED ELECTRIC, TELEPHONE AND GAS FACILITIES. (48 HOUR NOTIFICATION REQUIRED)

BEFORE STARTING ANY EXCAVATION, THE CONTRACTOR SHALL CALL "C.U.A.N." (CHICAGO UTILITY ALERT NETWORK) AT (312) 744-7000 FOR FIELD LOCATIONS OF BURIED ELECTRIC, TELEPHONE AND GAS UTILITIES (48 HOUR NOTIFICATION IS REQUIRED).

THE CONTRACTOR WILL NOT BE ALLOWED TO SET UP A YARD OR FIELD OFFICE ON STATE (OR TOLLWAY) PROPERTY WITHOUT WRITTEN PERMISSION FROM THE DEPARTMENT (OR ISTHA)

WHEN ARTIFICIAL LIGHTING IS UTILIZED IN NIGHT OPERATIONS, THE CONTRACTOR SHALL EXERCISE THE UTMOST PRECAUTIONS IN PREVENTING ADVERSE VISABILITY TO THE MOTORING PUBLIC AND ADJOINING RESIDENTIAL AREAS.

ANY PAVEMENT MARKINGS AND RAISED REFLECTIVE PAVEMENT MARKERS OBLITERATED BY MILLING AND RESURFACING OPERATIONS ON SIDE STREETS AND ENTRANCES SHALL BE REPLACED AND PAID FOR IN KIND.

BEFORE BEGINNING ANY WORK, THE CONTRACTOR SHALL RETAIN AND RECORD FOR FUTURE REFERENCE, ALL EXISTING PAVEMENT MARKING LINES (AND RAISED REFLECTIVE PAVEMENT MARKERS) IN ORDER THAT THESE LOCATIONS CAN BE RE-ESTABLISHED FOR STRIPING. EXACT LOCATIONS OF ALL PAVEMENT MARKINGS SHALL BE AS DIRECTED BY THE ENGINEER.

ALL PAVEMENT PATCHING LOCATIONS WILL BE DETERMINED IN THE FIELD BY THE ENGINEER.

THE CONTRACTOR SHALL CONTACT THE DISTRICT ONE TRAFFIC CONTROL SUPERVISOR AT (847) 705-4470 A MINIMUM OF 72 HOURS IN ADVANCE OF BEGINNING WORK.

THE ENGINEER SHALL CONTACT MR. WALLY CZARNY, AREA TRAFFIC FIELD ENGINEER AT (773) 685-4342 MINIMUM OF TWO (2) WEEKS PRIOR TO PLACEMENT OF PERMANENT PAVEMENT MARKINGS.

THE EXISTING ROADWAY TYPICAL SECTION IS ASSUMED TO HAVE A 3 INCH HOT-MIX ASPHALT OVERLAY ON TOP OF A TEN INCH CONCRETE BASE.

THE RESURFACING OF THE NB I-90/94 RAMP TO WB I-290 SHALL BE COMPLETED WITHIN THREE CONSECUTIVE NIGHTS.

HOT-MIX ASPHALT MIXTURE REQUIREMENTS

	MIXTURE TYPE	AC TYPE	AIR VOIDS (%)
ROADWAY	HOT-MIX ASPHALT SURFACE COURSE, MIX "D", N70 (IL 9.5 MM), 2"	PG 64-22	4% @ 70 GYR
PATCHES	CLASS D PATCHES, (HMA BINDER IL-25.0 MM)	PG 64-22	4% @ 105 GYR
	NOTE: TOP 2 INCHES OF PATCHES SHALL BE SAME AS SURFACE COURSE:		
	HOT-MIX ASPHALT SURFACE COURSE, MIX "D", N70 (IL 9.5 MM), 2"	PG 64-22	4% @ 70 GYR

THE UNIT WEIGHT USED TO CALCULATE ALL HOT-MIX ASPHALT SURFACE MIXTURE QUANTITIES IS 112 LBS/SY/IN.

INDEX OF SHEETS

<u>SHEET NO.</u>	<u>DESCRIPTION</u>
1	TITLE SHEET
2	INDEX OF SHEETS, STATE STANDARDS AND GENERAL NOTES
3	SUMMARY OF QUANTITIES
4	GENERAL LOCATION MAP
5-6	PATCHING SCHEDULE
7	BUTT JOINT AND HMA TAPER DETAILS
8	ENTRANCE RAMP CLOSURE DETAILS
9-10	MULTI-LANE FREEWAY PAVEMENT MARKING DETAILS
11	DISTRICT ONE TYPICAL PAVEMENT MARKINGS
12	FREEWAY SHOULDER CLOSURES AND PARTIAL RAMP CLOSURES

STATE STANDARDS

<u>STANDARD NO.</u>	<u>DESCRIPTION</u>
000001-05	TYPICAL SYMBOLS, ABBREVIATIONS AND PATTERNS
442201-03	CLASS C AND D PATCHES
701400-02	APPROACH TO LANE CLOSURE, FREEWAY/EXPRESSWAY
701401-04	LANE CLOSURE, FREEWAY/EXPRESSWAY
701901	TRAFFIC CONTROL DEVICES

2 Rev. Sheet B-27-08

FILE NAME = c:\projects\dl136508\design_aa.dgn	USER NAME = wilgreendp	DESIGNED -	REVISED -	<b>STATE OF ILLINOIS DEPARTMENT OF TRANSPORTATION</b>	<b>INDEX OF SHEETS, STATE STANDARDS AND GENERAL NOTES</b>	F.A. RTE.	SECTION	COUNTY	TOTAL SHEETS	SHEET NO.	
		DRAWN -	REVISED -			VAR.	2008-050 PP	COOK	12	2	
	PLOT SCALE = 100.0000' / IN.	CHECKED -	REVISED -			CONTRACT NO. 60E99					
	PLOT DATE = 8/18/2008	DATE -	REVISED -			FED. ROAD DIST. NO. 1 [ILLINOIS] FED. AID PROJECT					
				SCALE:	SHEET NO.	OF	SHEETS	STA.	TO	STA.	

CONTRACT NO. 60E99

SUMMARY OF QUANTITIES			URBAN 100% STATE		CONSTRUCTION TYPE CODE				
CODE NO	ITEM	UNIT	TOTAL QUANTITIES	1000-2A					
40600200	BITUMINOUS MATERIALS (PRIME COAT)	TON	3	3					
40600300	AGGREGATE (PRIME COAT)	TON	14	14					
40600400	MIXTURE FOR CRACKS, JOINTS, AND FLANGEWAYS	TON	21	21					
40600895	CONSTRUCTING TEST STRIP	EACH	1	1					
40600982	HOT-MIX ASPHALT SURFACE REMOVAL - BUTT JOINT	SO YD	619	619					
40600340	HOT-MIX ASPHALT SURFACE COURSE, MIX "D", N70	TON	759	759					
<del>40603595</del>	<del>POLYMERIZED HOT MIX ASPHALT SURFACE COURSE, MIX "E", N90</del>	<del>TON</del>	<del>515</del>	<del>515</del>					
44000157	HOT-MIX ASPHALT SURFACE REMOVAL, 2"	SO YD	6701	6701					
44201769	CLASS D PATCHES, TYPE III, 10 INCH	SO YD	36	36					
67000400	ENGINEER'S FIELD OFFICE, TYPE A	CAL MO	3	3					
67100100	MOBILIZATION	L SUM	1	1					
<del>*78000100</del>	<del>THERMOPLASTIC PAVEMENT MARKING - LETTERS AND SYMBOLS</del>	<del>SO FT</del>	<del>146</del>	<del>146</del>					
*78000200	THERMOPLASTIC PAVEMENT MARKING - LINE 4"	FOOT	5006	5006					
<del>*78000650</del>	<del>THERMOPLASTIC PAVEMENT MARKING - LINE 24"</del>	<del>FOOT</del>	<del>58</del>	<del>58</del>					
<del>*78003110</del>	<del>PREFORMED PLASTIC PAVEMENT MARKING, TYPE B - LINE 4"</del>	<del>FOOT</del>	<del>80</del>	<del>80</del>					
<del>*78003120</del>	<del>PREFORMED PLASTIC PAVEMENT MARKING, TYPE B - LINE 5"</del>	<del>FOOT</del>	<del>468</del>	<del>468</del>					
<del>*78003130</del>	<del>PREFORMED PLASTIC PAVEMENT MARKING, TYPE B - LINE 6"</del>	<del>FOOT</del>	<del>300</del>	<del>300</del>					
*78100100	RAISED REFLECTIVE PAVEMENT MARKER	EACH	50	50					
<del>78300200</del>	<del>RAISED REFLECTIVE PAVEMENT MARKER REMOVAL</del>	<del>EACH</del>	<del>50</del>	<del>50</del>					
X7011015	TRAFFIC CONTROL AND PROTECTION (EXPRESSWAYS)	L SUM	1	1					
44201765	CLASS D PATCHES, TYPE II, 10 INCH	SO YD	29	29					

SUMMARY OF QUANTITIES			1000-2A		CONSTRUCTION TYPE CODE				
CODE NO	ITEM	UNIT	TOTAL QUANTITIES	1000-2A					
40601005	HOT-MIX ASPHALT REPLACEMENT OVER PATCHES	TON	26	26					
44002216	HOT-MIX ASPHALT REMOVAL OVER PATCHES, 4"	SQ YD	115	115					
44201771	CLASS D PATCHES, TYPE IV, 10 INCH	SQ YD	100	100					
78000100	THERMOPLASTIC PAVEMENT MARKING - LETTERS AND SYMBOLS	SQ FT	37	37					
78000400	THERMOPLASTIC PAVEMENT MARKING - LINE 6"	FOOT	175	175					
78000500	THERMOPLASTIC PAVEMENT MARKING - LINE 8"	FOOT	230	230					
78000600	THERMOPLASTIC PAVEMENT MARKING - LINE 12"	FOOT	170	170					
78000650	THERMOPLASTIC PAVEMENT MARKING - LINE 24"	FOOT	50	50					
78004220	PREFORMED PLASTIC PAVEMENT MARKING, TYPE B - INLAID - LINE 5"	FOOT	840	840					
78100100	RAISED REFLECTIVE PAVEMENT MARKER	EACH	40	40					
78300200	RAISED REFLECTIVE PAVEMENT MARKER REMOVAL	EACH	40	40					

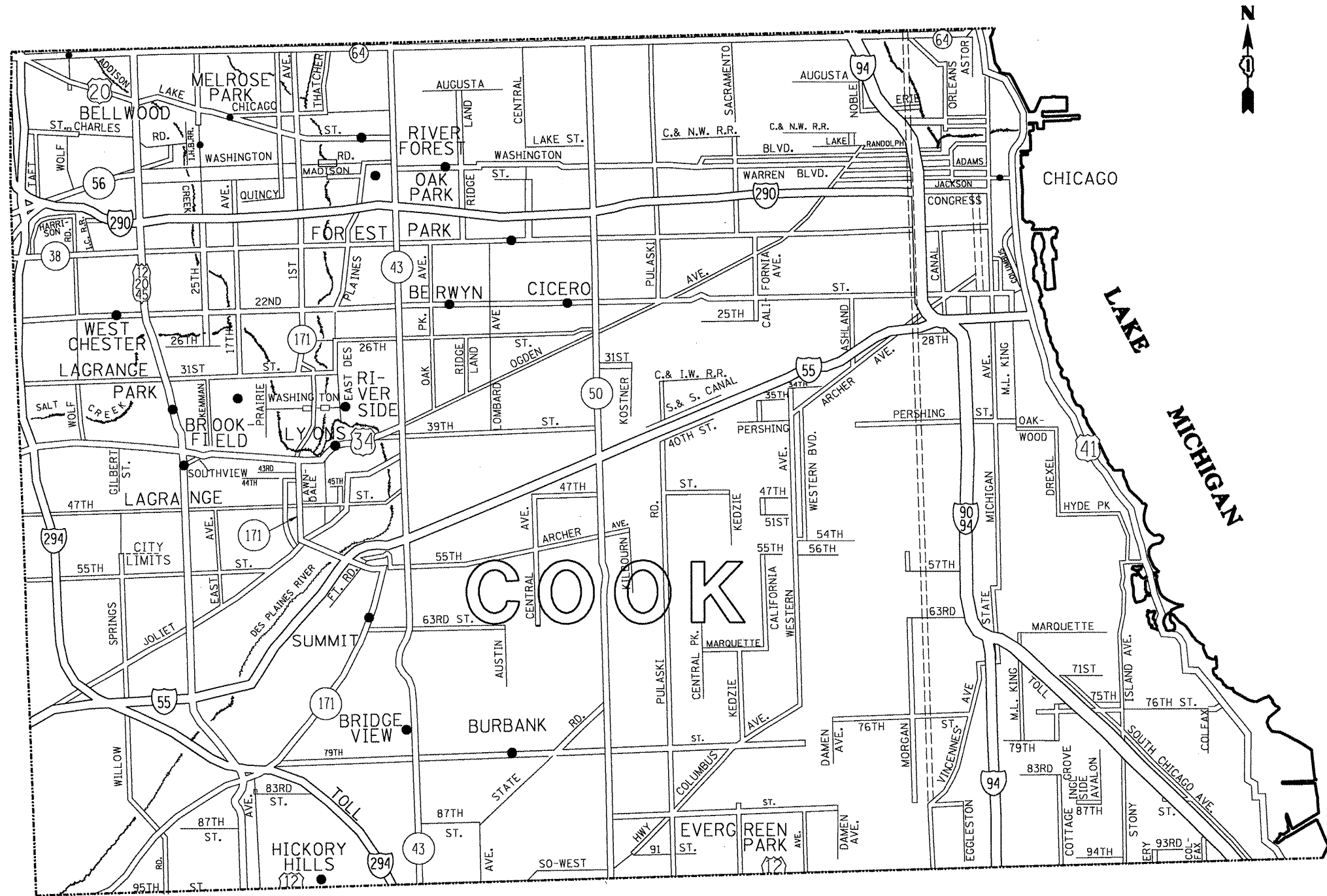
\* SPECIALTY ITEMS

Rev. 9-2-08  
Rev. 7-22-08

REVISIONS	
NAME	DATE

ILLINOIS DEPARTMENT OF TRANSPORTATION  
SUMMARY OF QUANTITIES

PLOT DATE: 6/25/2008



2 Rev. Sheet 8-27-08

FILE NAME =  
 c:\projects\dl136508\design\_ee.dgn

USER NAME = wlgreendp  
 PLOT SCALE = 100.0000' / IN.  
 PLOT DATE = 8/15/2008

DESIGNED -	REVISED -
DRAWN -	REVISED -
CHECKED -	REVISED -
DATE -	REVISED -

**STATE OF ILLINOIS  
 DEPARTMENT OF TRANSPORTATION**

**GENERAL LOCATION MAP - COOK COUNTY**

SCALE: SHEET NO. OF SHEETS STA. TO STA.

F.A. RTE.	SECTION	COUNTY	TOTAL SHEETS	SHEET NO.
VAR.	2008-050 PP	COOK	12	4
CONTRACT NO. 60E99				
FED. ROAD DIST. NO. [ILLINOIS] FED. AID PROJECT				

LOCATIONS FOR INTERSTATE 55	REPAIR LENGTH (FT)	REPAIR WIDTH (FT)	REPAIR AREA (SF)	REPAIR AREA (SY)	SURFACE TYPE	REPAIR WORK
NB I-55 @ LAGRANGE RD - SOUTH EXIT RAMP	9	15	135	15	HMA	HMA SURF REM & RESURF
	5	12	60	7	HMA	HMA SURF REM & RESURF
	12	12	144	16	HMA	HMA SURF REM & RESURF
	12	12	144	16	HMA	HMA SURF REM & RESURF
NB I-55 @ LAGRANGE RD - NB ENTRANCE RAMP	10	14	140	16	HMA	HMA SURF REM & RESURF
	114	14	1596	177	HMA	HMA SURF REM & RESURF
SB I-55 @ LAGRANGE RD - NB EXIT RAMP	18	12	216	24	HMA	HMA SURF REM & RESURF
NB I-55 @ 1ST AVENUE - SB EXIT RAMP	12	12	144	16	HMA	HMA SURF REM & RESURF
	12	12	144	16	HMA	HMA SURF REM & RESURF
NB I-55 @ CICERO AVE - ENTRANCE RAMP	44	12	528	59	HMA	HMA SURF REM & RESURF
	12	12	144	16	HMA	HMA SURF REM & RESURF
	18	12	216	24	HMA	HMA SURF REM & RESURF
SB I-55 @ CICERO AVE - EXIT RAMP	12	12	144	16	HMA	HMA SURF REM & RESURF
SB-I-55 @ CICERO AVE - ENTRANCE RAMP	23	12	276	31	HMA	HMA SURF REM & RESURF
	16	12	192	21	HMA	HMA SURF REM & RESURF
SB I-55 @ PULASKI ROAD - EXIT RAMP	12	12	144	16	HMA	HMA SURF REM & RESURF
	10	12	120	13	HMA	HMA SURF REM & RESURF
	10	12	120	13	HMA	HMA SURF REM & RESURF
	12	12	144	16	HMA	HMA SURF REM & RESURF
	12	12	144	16	HMA	HMA SURF REM & RESURF
SB I-55 @ PULASKI ROAD - ENTRANCE RAMP	12	12	144	16	HMA	HMA SURF REM & RESURF
	12	12	144	16	HMA	HMA SURF REM & RESURF
NB I-55 @ STATE STREET - ENTRANCE RAMP	12	15	180	20	PCC	CLASS D PATCH
SB I-55 @ STATE STREET - EXIT RAMP	12	12	144	16	PCC	CLASS D PATCH
SB LAKE SHORE DRIVE RAMP TO SB I-55	752	22	16544	1838	HMA	HMA SURF REM & RESURF
NB I-55 @ PULASKI ROAD - ENTRANCE RAMP	24	12	288	32	HMA	HMA SURF REM & RESURF
NB I-55 @ HARLEM AVE - EXIT RAMP	4	12	48	5	HMA	HMA SURF REM & RESURF
	4	12	48	5	HMA	HMA SURF REM & RESURF
NB I-55 @ CALIFORNIA AVE - EXIT RAMP.	24	3	72	8	PCC	CLASS D PATCH

2 Rev. Sheet 8-27-08

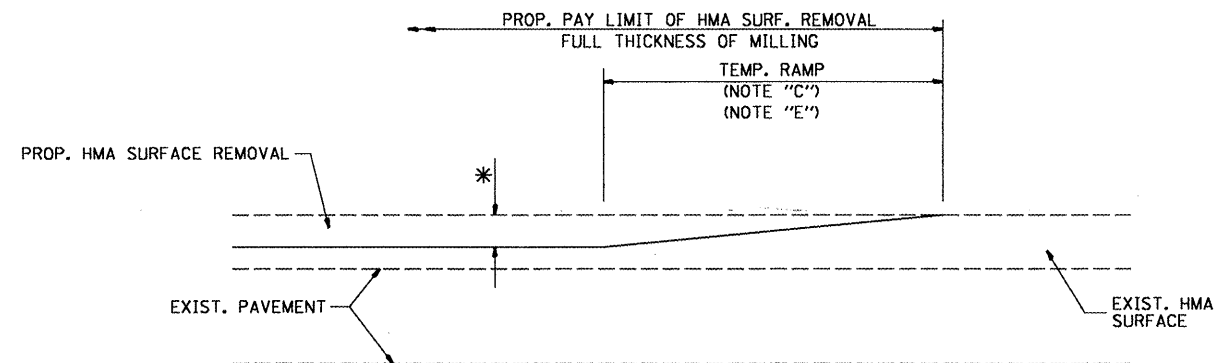
FILE NAME = c:\projects\dl36508\design_aa.dgn	USER NAME = wilgreendp	DESIGNED -	REVISED -	<b>STATE OF ILLINOIS DEPARTMENT OF TRANSPORTATION</b>	<b>PATCHING SCHEDULE</b>	F.A. RTE.	SECTION	COUNTY	TOTAL SHEETS	SHEET NO.	
		DRAWN -	REVISED -			VAR.	2008-050 PP	COOK	12	5	
		CHECKED -	REVISED -			CONTRACT NO. 60E99					
		DATE -	REVISED -			ILLINOIS FED. AID PROJECT					
PLOT SCALE = 100.0000' / IN.				SCALE:		SHEET NO. OF SHEETS		STA. TO STA.			
PLOT DATE = 8/15/2008											

LOCATIONS FOR INTERSTATE 290	REPAIR LENGTH (FT)	REPAIR WIDTH (FT)	REPAIR AREA (SF)	REPAIR AREA (SY)	SURFACE TYPE	REPAIR WORK
EB I-290 EXIT RAMP TO PAULINA AVENUE	5	12	60	7	HMA	HMA SURF REM & RESURF
EB I-290 RAMP TO NB KENNEDY EXPY	5	12	60	7	HMA	HMA SURF REM & RESURF
	4	12	48	5	HMA	HMA SURF REM & RESURF
NB DAN RYAN EXPY TO WB I-290	4	12	48	5	HMA	CLASS D PATCH
	4	12	48	5	HMA	CLASS D PATCH
	8	12	96	11	HMA	CLASS D PATCH
NB DAN RYAN RAMP CONC SECT TO BRIDGE ABUTMENT	300	16	4800	533	HMA	HMA SURF REM & RESURF
BRIDGE ABUTMENT TO GORE AREA NW QUADRANT	400	16	6400	711	HMA	HMA SURF REM & RESURF
WB I-290 ENTRANCE RAMP FROM INDEPENDENCE AVE	12	12	144	16	HMA	HMA SURF REM & RESURF

LOCATIONS FOR INTERSTATE 290/CONGRESS PARKWAY	REPAIR LENGTH (FT)	REPAIR WIDTH (FT)	REPAIR AREA (SF)	REPAIR AREA (SY)	SURFACE TYPE	REPAIR WORK
EB I-290/CONGRESS PARKWAY W/O WELLS ST.	275	ALL LANES	12539	1394	HMA	HMA SURF REM & RESURF
	22	10	220	25	HMA	CLASS D PATCH
	22	10	220	25	HMA	CLASS D PATCH
	22	10	220	25	HMA	CLASS D PATCH
	22	10	220	25	HMA	CLASS D PATCH
WB I-290/CONGRESS PARKWAY W/O WELLS ST.	275	ALL LANES	14141	1572	HMA	HMA SURF REM & RESURF

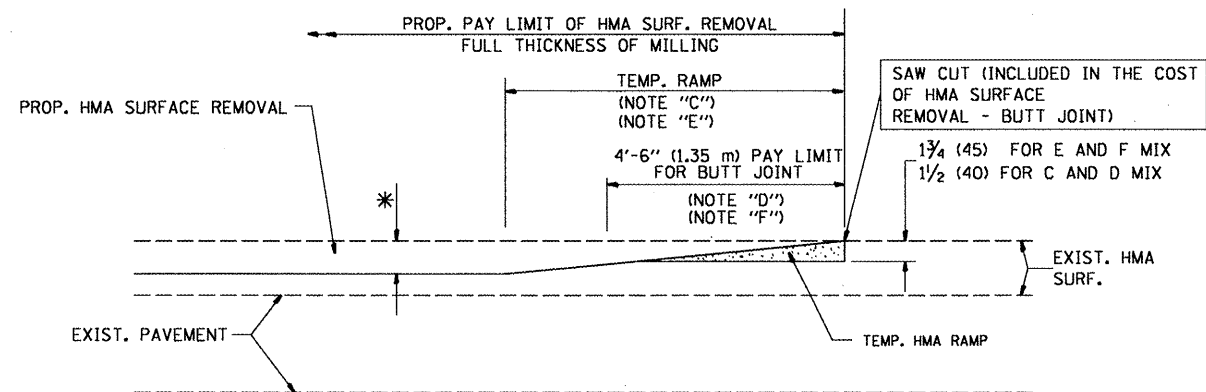
2

2 Rev. 9-2-08



**MILLED TEMPORARY RAMP**  
(FOR BUTT JOINT AND HMA TAPER SEE DETAIL BELOW)

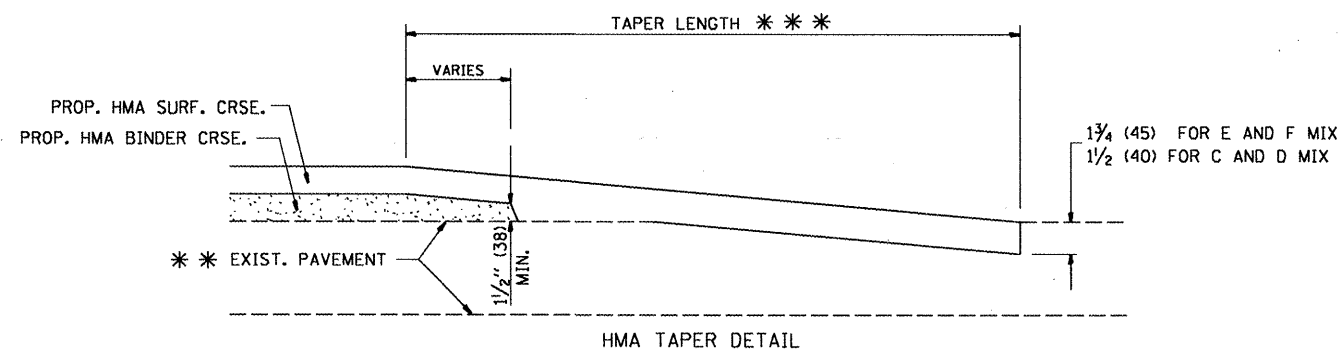
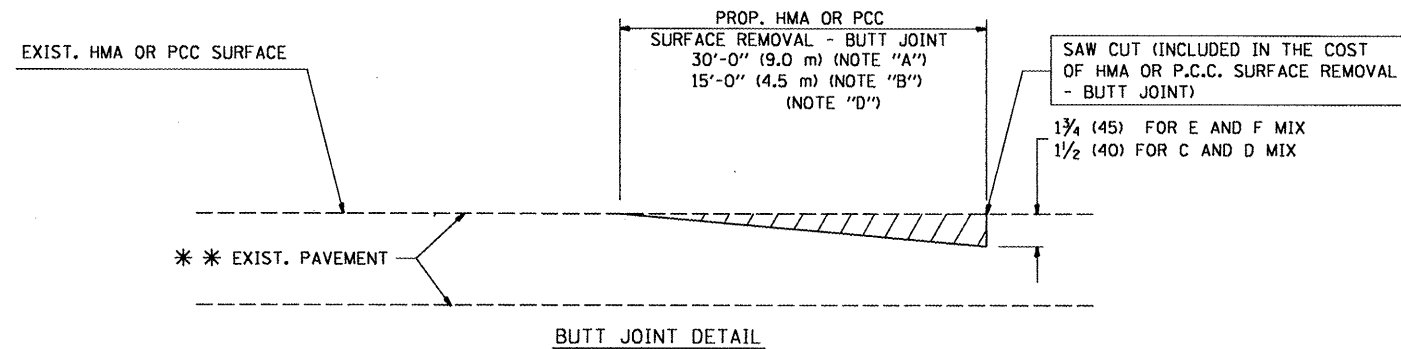
**OPTION 1**



**HMA CONSTRUCTED TEMPORARY RAMP**  
(FOR BUTT JOINT AND HMA TAPER SEE DETAIL BELOW)

**OPTION 2**

**TYPICAL TEMPORARY RAMP**



**TYPICAL BUTT JOINT AND HMA TAPER FOR RESURFACING ONLY**

\*\*\* PC CONCRETE, HMA OR HMA RESURFACED PAVEMENT.

**NOTES**

- A: MAINLINE ROADWAYS AND MAJOR SIDE ROADS.
  - B: MINOR SIDE ROADS.
  - C: THE TEMP. RAMP SHALL BE CONSTRUCTED IMMEDIATELY UPON REMOVAL OF THE EXISTING HMA SURFACE.
  - D: THE BUTT JOINT SHALL BE CONSTRUCTED IMMEDIATELY PRIOR TO PLACING THE PROPOSED HMA COURSES.
  - E: TAPER THE TEMP. RAMP AT A RATE OF 3'-0" (900 mm) PER 1 INCH (25 mm) OF MILLING THICKNESS.
  - F: INSTALLATION AND REMOVAL OF THE 4'-6" (1.35 m) TEMP. RAMP IS INCLUDED IN COST OF HMA SURFACE REMOVAL - BUTT JOINT
  - G: SEE ARTICLE 406.08 AND 406.14 OF THE STANDARD SPECIFICATIONS FOR "HMA AND/OR PCC SURFACE REMOVAL, BUTT JOINT".
- \* SEE TYPICAL SECTIONS FOR MILLING THICKNESS.

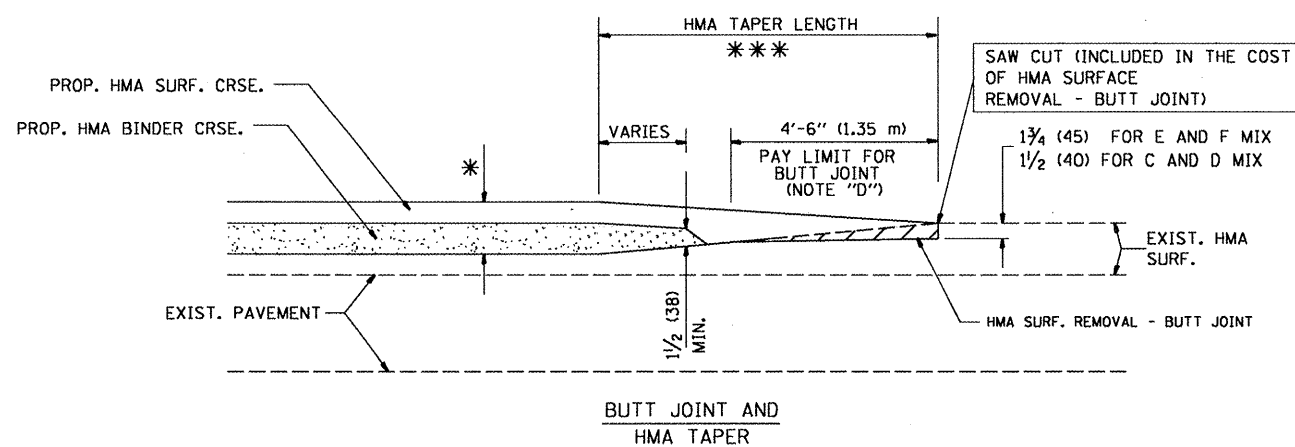
\*\*\* 20'-0" (6.1 m) PER 1 (25) RESURFACING (NOTE "A")  
10'-0" (3.0 m) PER 1 (25) RESURFACING (NOTE "B")

**BASIS OF PAYMENT:**

THE BUTT JOINT WILL BE PAID FOR AT THE CONTRACT UNIT PRICE PER SQUARE YARD (SQUARE METER) FOR "HOT-MIX ASPHALT SURFACE REMOVAL - BUTT JOINT" OR FOR "PORTLAND CEMENT CONCRETE SURFACE REMOVAL - BUTT JOINT".

ALL DIMENSIONS ARE IN INCHES (MILLIMETERS) UNLESS OTHERWISE SHOWN.

Rev. Sheet 8-27-08



**TYPICAL BUTT JOINT AND HMA TAPER FOR MILLING AND RESURFACING**

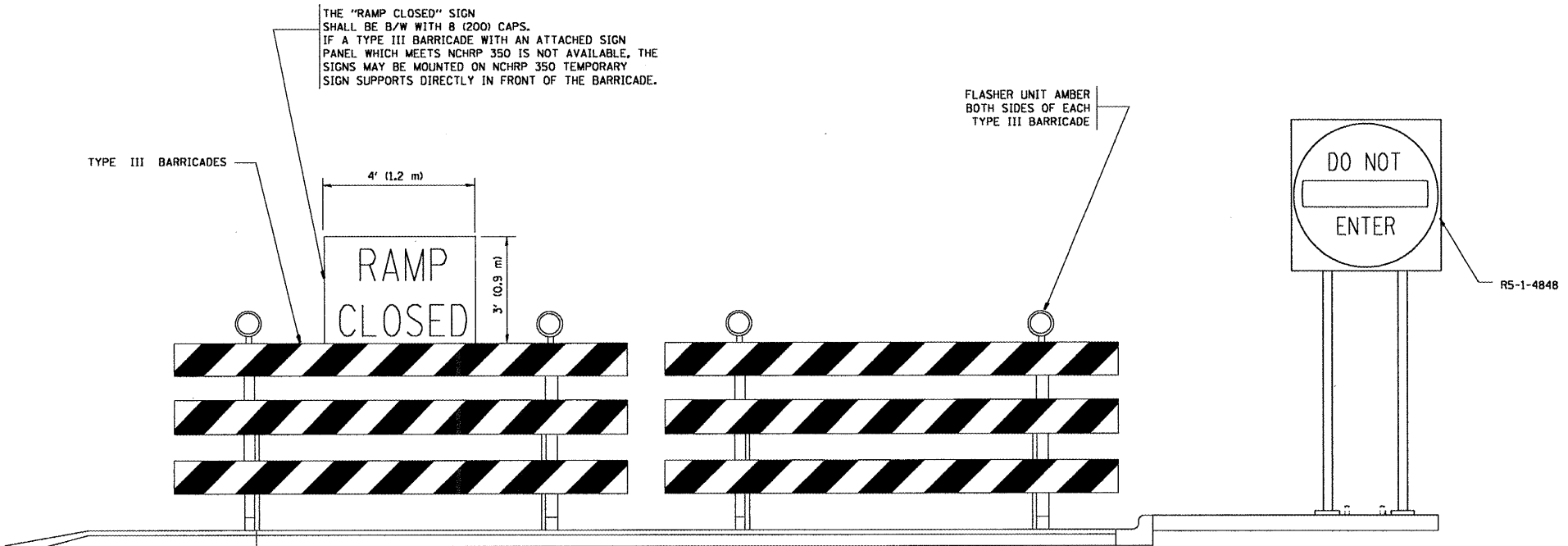
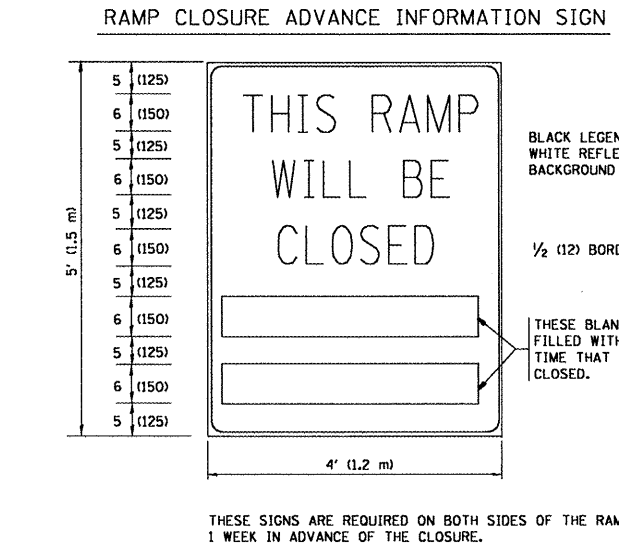
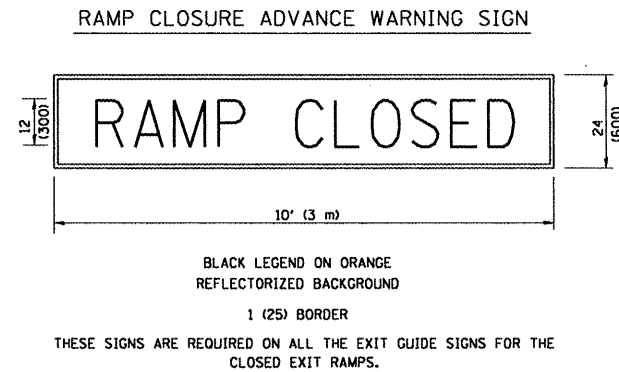
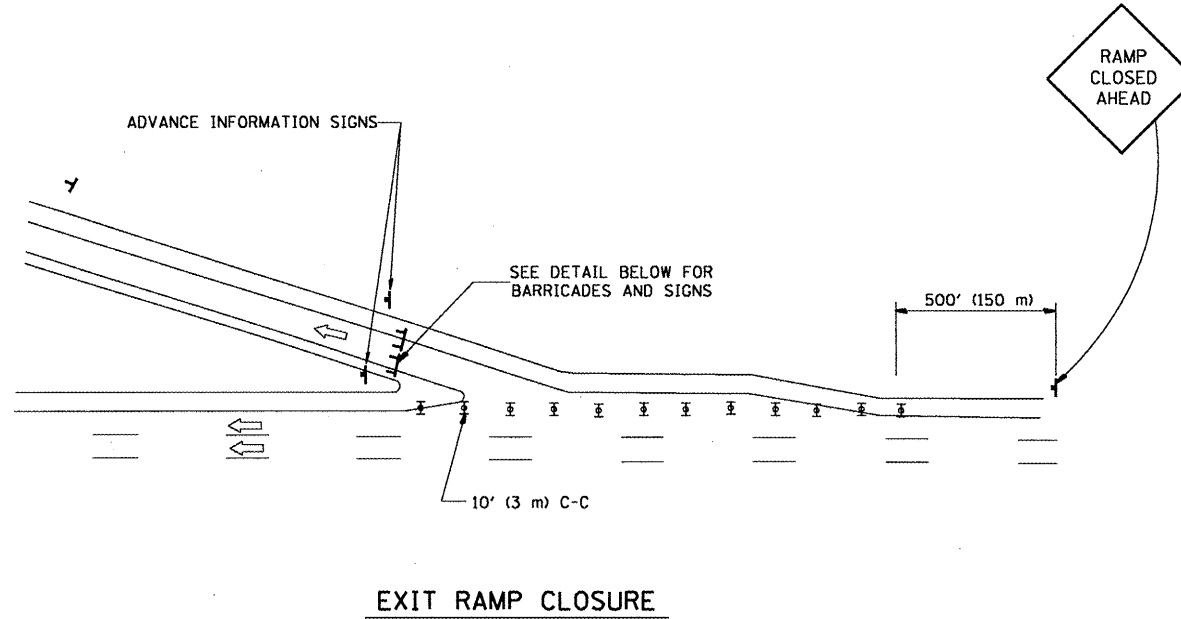
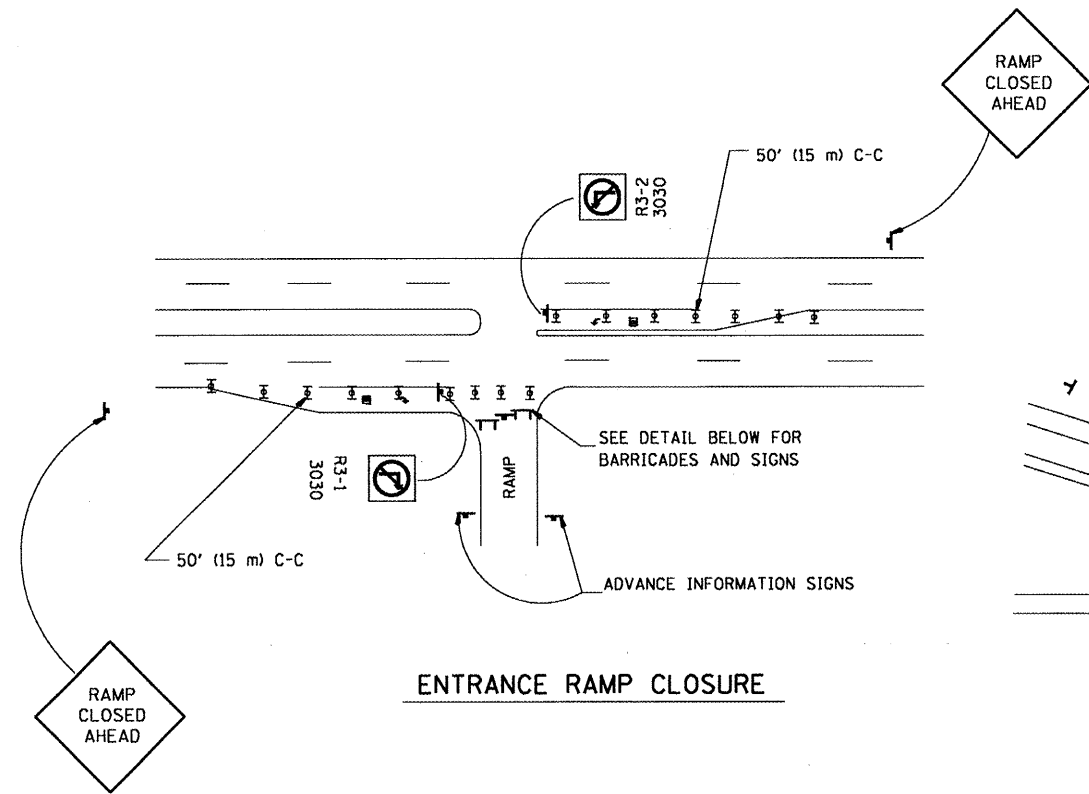
**STATE OF ILLINOIS  
DEPARTMENT OF TRANSPORTATION**

**BUTT JOINT AND  
HMA TAPER DETAILS**

SCALE: NONE SHEET NO. 1 OF 1 SHEETS STA. TO STA.

F.A. RTE.	SECTION	COUNTY	TOTAL SHEETS	SHEET NO.
VAR.	2008-050 PP	COOK	12	7
BD400-05 BD32			CONTRACT NO. 60E99	
FED. ROAD DIST. NO. 1   ILLINOIS   FED. AID PROJECT				

FILE NAME =	USER NAME = wilgreendp	DESIGNED - M. DE YONG	REVISED - R. SHAH 10-25-94
\\dist\inf\fa2\users\wilgreendp\Desktop\Ramp Details\bd32.dgn		DRAWN -	REVISED - A. ABBAS 03-21-97
PLOT SCALE = 99.9998' / IN.		CHECKED -	REVISED - M. GOMEZ 04-06-01
PLOT DATE = 8/15/2008		DATE - 06-13-90	REVISED - R. BORO 01-01-07



- SYMBOLS**
- ▬ TYPE II BARRICADE, DRUM OR VERTICAL BARRICADE WITH STEADY BURN MONO-DIRECTIONAL LIGHT
  - ⊣ TYPE III BARRICADE WITH FLASHING LIGHT

- GENERAL NOTES:**
1. CONES MAY BE SUBSTITUTED FOR DRUMS OR TYPE II BARRICADES DURING DAY OPERATIONS. CONES SHALL BE A MINIMUM OF 28 (700) HIGH.
  2. STEADY BURN LIGHTS WILL NOT BE REQUIRED FOR DAY OPERATIONS.
  3. A FLAGGER SHALL BE POSITIONED AT EACH CLOSED RAMP THAT IS OPEN TO CONSTRUCTION VEHICLES.
  4. ALL ROUTE MARKERS AND TRAILBLAZER ASSEMBLIES WHICH DIRECT MOTORISTS TO A CLOSED ENTRANCE RAMP SHALL BE COVERED.
  5. THE SIGNING AND BARRICADING WHICH IS REQUIRED BY THIS DETAIL SHALL BE INCLUDED IN THE COST OF TRAFFIC CONTROL AND PROTECTION (EXPRESSWAYS).
  6. AUTHORIZATION FROM THE DISTRICT'S BUREAU OF TRAFFIC IS REQUIRED FOR ALL RAMP CLOSURES.
  7. THE RAMP CLOSURE ADVANCE INFORMATION SIGNS SHALL BE ERECTED IF THE CLOSURE TIME EXCEEDS TWENTY-FOUR (24) HOURS. ADDITIONAL ADVANCE WARNING SIGNS ON EXIT GUIDE SIGNING WILL BE REQUIRED FOR EXIT RAMP CLOSURES THAT EXCEED TWENTY FOUR (24) HOURS IN LENGTH.

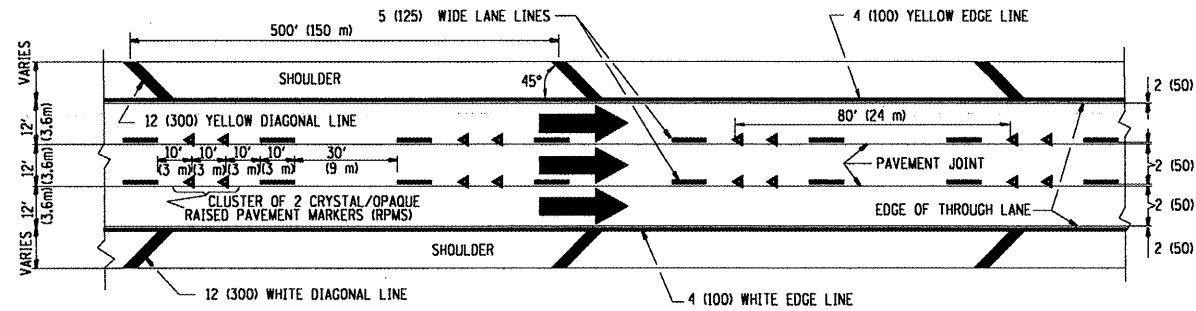
2 Rev. Sheet 8-27-08

ALL DIMENSIONS ARE IN INCHES (MILLIMETERS) UNLESS OTHERWISE SHOWN.

FILE NAME = \\dist\ntfa2\users\wilgreendp\Desktop\Ramp Details\to88.dgn	USER NAME = wilgreendp	DESIGNED - DWS	REVISED - DWS 12-94	<b>STATE OF ILLINOIS DEPARTMENT OF TRANSPORTATION</b>	<b>FREWAY ENTRANCE AND EXIST RAMP CLOSURE DETAILS</b>		F.A. RTE.:	SECTION	COUNTY	TOTAL SHEETS	SHEET NO.	
PLOT SCALE = 100.000' / IN.	CHECKED -	REVISED - DWS/JAF 12-02	REVISED - JAF 02-06		SCALE: NONE	SHEET NO. 1 OF 1 SHEETS	STA.	VAR.	2008-050 PP	COOK	12	8
PLOT DATE = 8/15/2008	DATE - 02-83	REVISED - SPB 01-07							TC-08			
												CONTRACT NO. 60E99



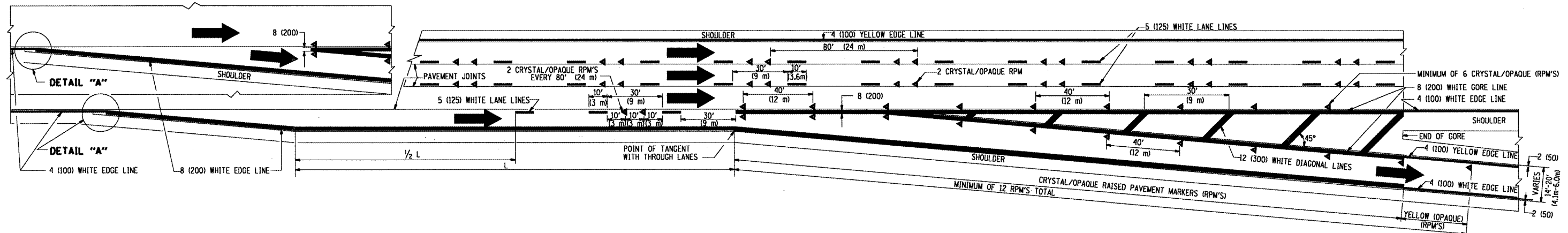
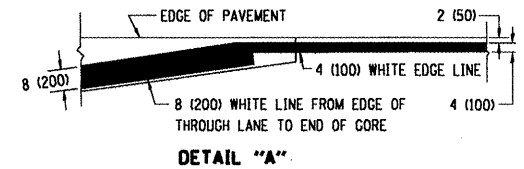
THE DIAGONAL LINES SHALL BE SPACED AT 40' (12 m) C-C ACROSS ALL STRUCTURES WHICH ARE 500' (150 m) OR LESS IN LENGTH  
 THE DIAGONAL LINES ARE NOT REQUIRED ON SHOULDERS WHICH ARE 6' (1.8 m) OR LESS IN WIDTH



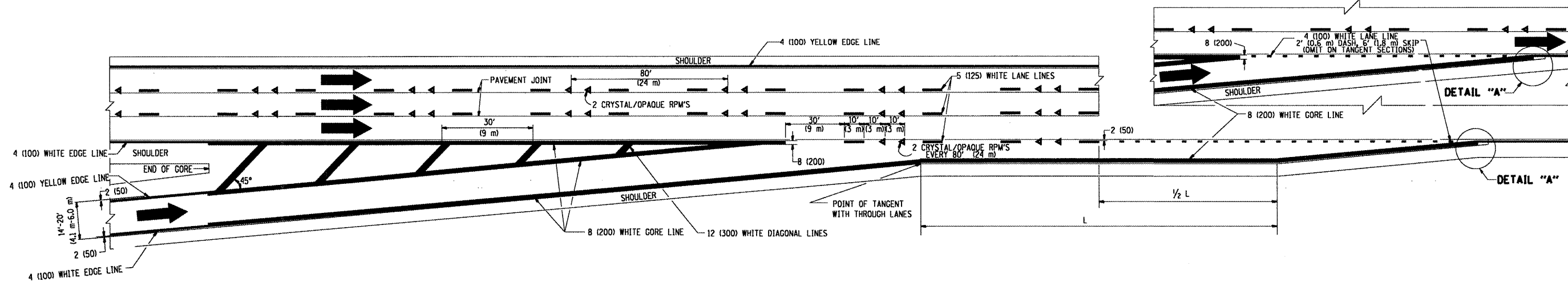
**TYPICAL EDGE LINES & LANE LINES**

**NOTES:**

1. THERMO PLASTIC PAVEMENT MARKING LINE SHALL BE USED FOR THE EDGE LINES, GORE LINES, AND DIAGONAL LINES ON BITUMINOUS PAVEMENT ONLY.
2. PREFORMED PLASTIC TYPE B PAVEMENT MARKING LINE SHALL BE USED FOR ALL LANE LINES ON BITUMINOUS PAVEMENT
3. POLYUREA PAVEMENT MARKING SHALL BE USED FOR ALL MARKINGS ON PCC



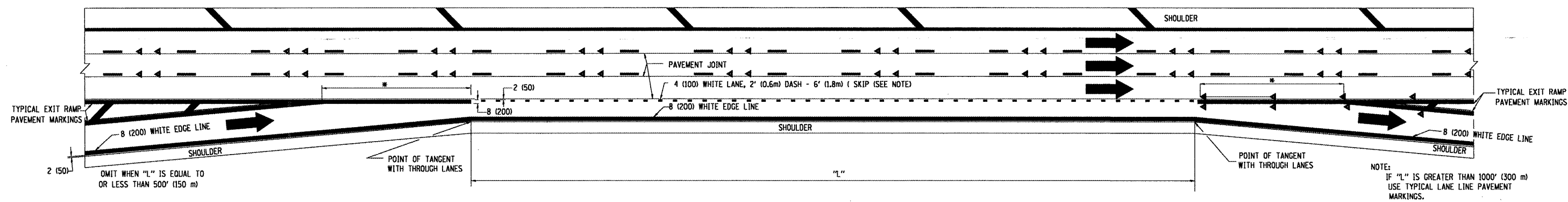
**TYPICAL EXIT RAMP PAVEMENT MARKINGS**



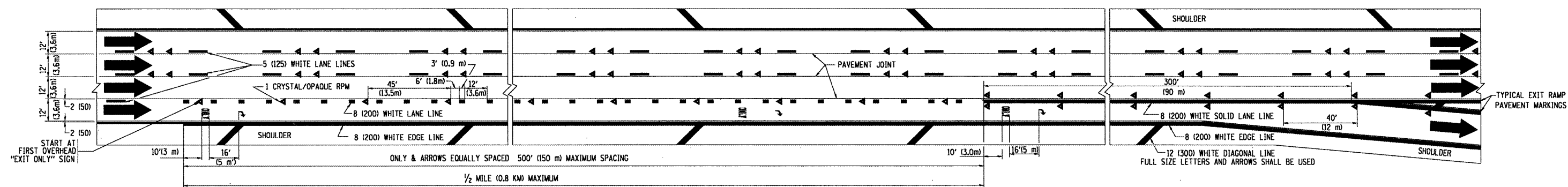
**TYPICAL ENTRANCE RAMP PAVEMENT MARKINGS**

*Rev. Sheet 8-27-08*

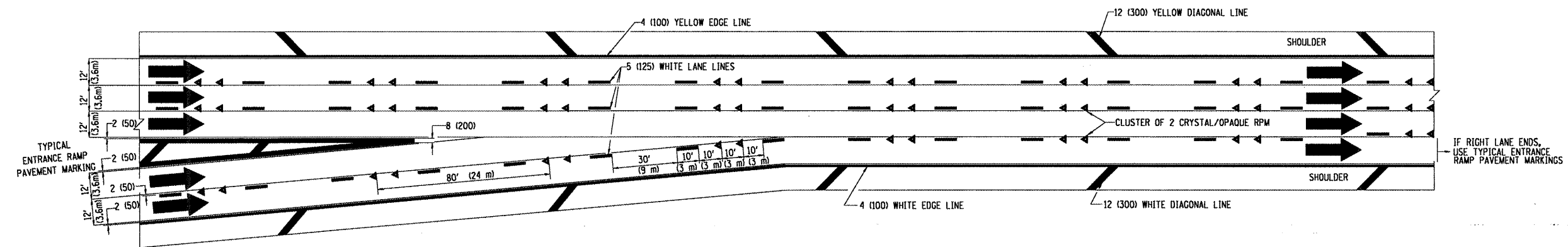
FILE NAME =	USER NAME = wlgreendp	DESIGNED - D.W.S.	REVISED - A.H. 03-96	<b>STATE OF ILLINOIS DEPARTMENT OF TRANSPORTATION</b>	<b>MULTI-LANE FREEWAY PAVEMENT MARKING DETAILS</b>		F.A. RTE.	SECTION	COUNTY	TOTAL SHEETS	SHEET NO.	
\\dist\otfa2\usera\wlgreendp\Desktop\Ramp Details\tcl2.dgn		DRAWN -	REVISED - D.W.S. 07-96		SCALE: NONE	SHEET NO. 1 OF 2 SHEETS	STA.	VAR.	2008-050 PP	COOK	12	9
		PLOT SCALE = 100.000' / IN.	REVISED - J.A.F. 02-06						<b>TC-12</b>			
		PLOT DATE = 8/15/2008	REVISED - S.P.B. 01-07						FED. ROAD DIST. NO. 1	ILLINOIS	FED. AID PROJECT	CONTRACT NO. 60E99



**TYPICAL ENTRANCE/EXIT RAMP COMBINATION PAVEMENT MARKINGS**



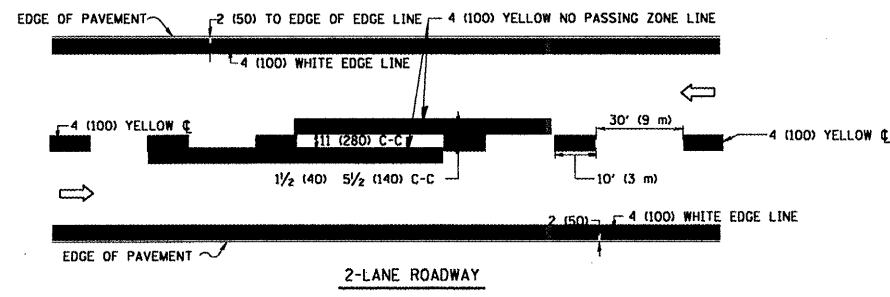
**TYPICAL EXIT ONLY LANE PAVEMENT MARKINGS**



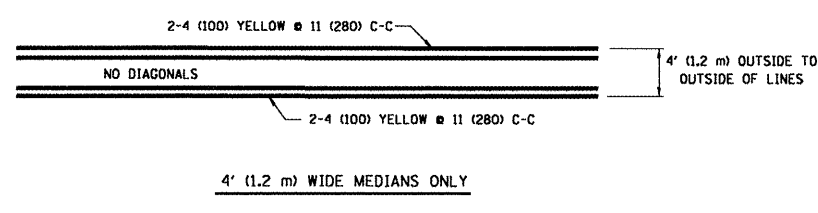
**TYPICAL TWO LANE ENTRANCE RAMP PAVEMENT MARKINGS**

Rev. Sheet 8-27-08

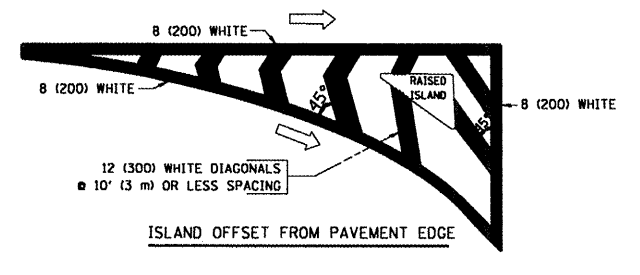
FILE NAME =	USER NAME = wilgreendp	DESIGNED - D.W.S.	REVISED - A.H. 03-96	<b>STATE OF ILLINOIS DEPARTMENT OF TRANSPORTATION</b>	<b>MULTI-LANE FREEWAY PAVEMENT MARKING DETAILS</b>		F.A. RTE.	SECTION	COUNTY	TOTAL SHEETS	SHEET NO.	
\\dist\dfs2\users\wilgreendp\Desktop\Ramp Details\td12.dgn		DRAWN -	REVISED - D.W.S. 07-96		SCALE: NONE	SHEET NO. 1 OF 2 SHEETS	STA.	TO STA.	2008-050 PP	COOK	12	10
		CHECKED -	REVISED - J.A.F. 02-06						<b>TC-12</b>		<b>CONTRACT NO. 60E99</b>	
		DATE - 01-90	REVISED - S.P.B. 01-07						FED. ROAD DIST. NO. 1 ILLINOIS FED. AID PROJECT			



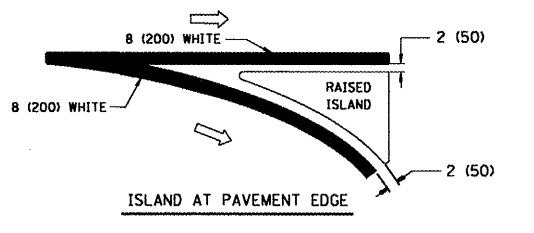
2-LANE ROADWAY



4' (1.2 m) WIDE MEDIANS ONLY

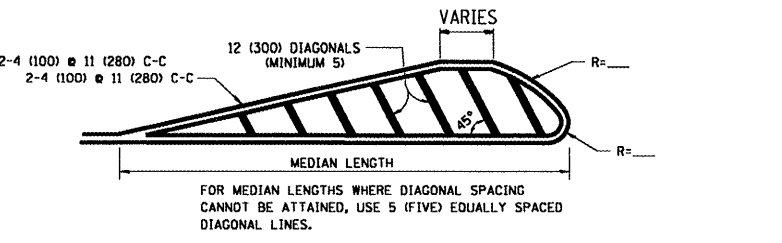


ISLAND OFFSET FROM PAVEMENT EDGE



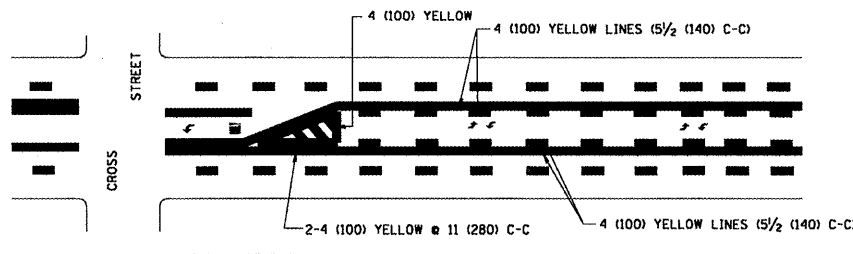
ISLAND AT PAVEMENT EDGE

TYPICAL ISLAND MARKING

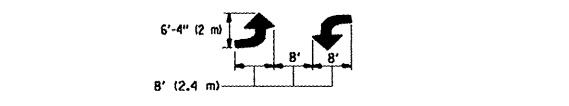


MEDIANS OVER 4' (1.2 m) WIDE

FOR MEDIAN LENGTHS WHERE DIAGONAL SPACING CANNOT BE ATTAINED, USE 5 (FIVE) EQUALLY SPACED DIAGONAL LINES.  
 DIAGONAL LINE SPACING: 50' (15 m) C-C (LESS THAN 30MPH (50 km/h))  
 75' (25 m) C-C 30MPH (50 km/h) TO 45MPH (70 km/h)  
 150' (45 m) C-C (MORE THAN 45MPH (70 km/h))

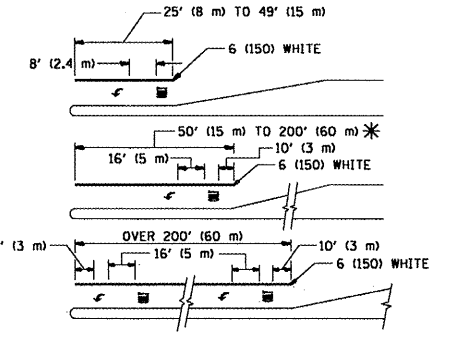


TYPICAL PAINTED MEDIAN MARKING



MEDIAN WITH TWO-WAY LEFT TURN LANE

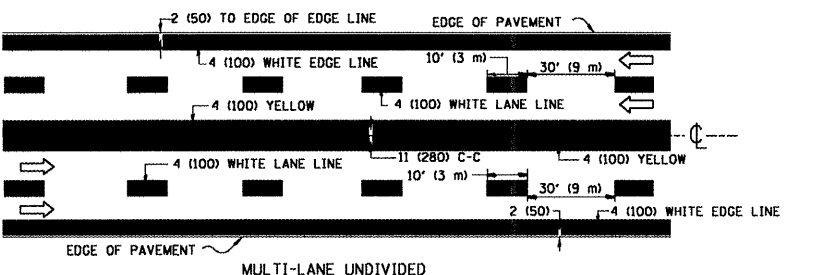
TYPICAL PAINTED MEDIAN MARKING



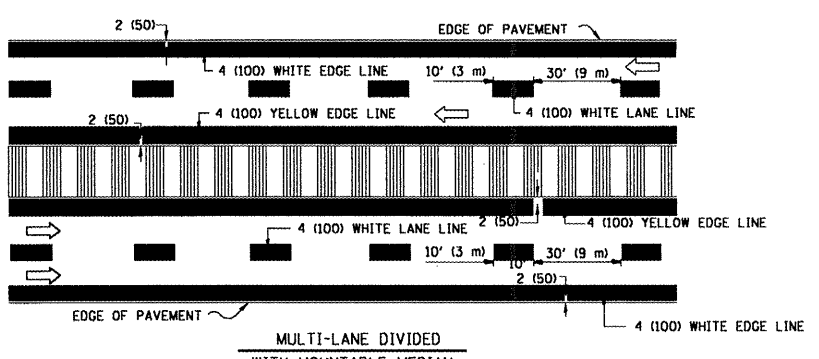
TYPICAL LEFT (OR RIGHT) TURN LANE

TYPICAL TURN LANE MARKING

FULL SIZE LETTERS 8" (2.4 m) AND ARROWS SHALL BE USED.  
 \* AREA = 15.6 SQ. FT. (1.5 m<sup>2</sup>) \* AREA = 20.8 SQ. FT. (1.9 m<sup>2</sup>)  
 \* TURN LANES IN EXCESS OF 400' (120 m) IN LENGTH MAY HAVE AN ADDITIONAL SET OF ARROW - "ONLY" INSTALLED MIDWAY BETWEEN THE OTHER TWO SETS OF ARROW - "ONLY".



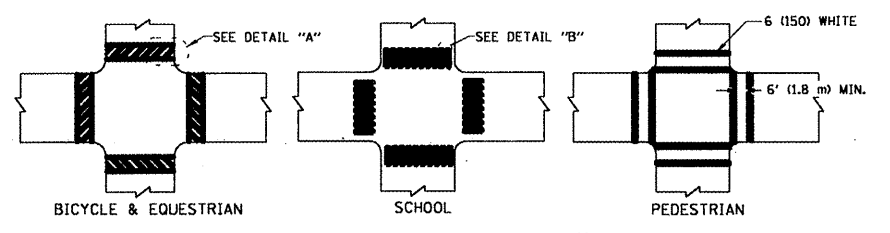
MULTI-LANE UNDIVIDED



MULTI-LANE DIVIDED WITH MOUNTABLE MEDIAN

NOTE: MEDIANS WITH BARRIER CURB DO NOT REQUIRE AN EDGE LINE

TYPICAL LANE AND EDGE LINE MARKING



TYPICAL CROSSWALK MARKING

TYPE OF MARKING	WIDTH OF LINE	PATTERN	COLOR	SPACING / REMARKS
CENTERLINE ON 2 LANE PAVEMENT	4 (100)	SKIP-DASH	YELLOW	10' (3 m) LINE WITH 30' (9 m) SPACE
CENTERLINE ON MULTI-LANE UNDIVIDED PAVEMENT	2 @ 4 (100)	SOLID	YELLOW	11 (280) C-C
NO PASSING ZONE LINES: FOR ONE DIRECTION FOR BOTH DIRECTIONS	4 (100) 2 @ 4 (100)	SOLID SOLID	YELLOW YELLOW	5/2 (140) C-C FROM SKIP-DASH CENTERLINE 11 (280) C-C OMIT SKIP-DASH CENTERLINE BETWEEN
LANE LINES	4 (100) 5 (125) ON FREEWAYS	SKIP-DASH SKIP-DASH	WHITE WHITE	10' (3 m) LINE WITH 30' (9 m) SPACE
DOTTED LINES (EXTENSIONS OF CENTER, LANE OR TURN LANE MARKINGS)	SAME AS LINE BEING EXTENDED	SKIP-DASH	SAME AS LINE BEING EXTENDED	2' (600) LINE WITH 6' (1.8 m) SPACE
EDGE LINES	4 (100)	SOLID	YELLOW-LEFT WHITE-RIGHT	OUTLINE MOUNTABLE MEDIANS IN YELLOW; EDGE LINES ARE NOT USED NEXT TO BARRIER CURB
TURN LANE MARKINGS	6 (150) LINE; FULL SIZE LETTERS & SYMBOLS (8" (2.4m))	SOLID	WHITE	SEE TYPICAL TURN LANE MARKING DETAIL
TWO WAY LEFT TURN MARKING	2 @ 4 (100) EACH DIRECTION 8' (2.4m) LEFT ARROW	SKIP-DASH AND SOLID IN PAIRS	YELLOW WHITE	10' (3 m) LINE WITH 30' (9 m) SPACE FOR SKIP-DASH; 5/2 (140) C-C BETWEEN SOLID LINE AND SKIP-DASH LINE SEE TYPICAL TWO-WAY LEFT TURN MARKING DETAIL
CROSSWALK LINES (PEDESTRIAN) A. DIAGONALS (BIKE & EQUESTRIAN) B. LONGITUDINAL BARS (SCHOOL)	2 @ 6 (150) 12 (300) @ 45° 12 (300) @ 90°	SOLID SOLID SOLID	WHITE WHITE WHITE	NOT LESS THAN 6' (1.8 m) APART 2' (600) APART SEE TYPICAL CROSSWALK MARKING DETAILS.
STOP LINES	24 (600)	SOLID	WHITE	PLACE 4' (1.2 m) IN ADVANCE OF AND PARALLEL TO CROSSWALK, IF PRESENT. OTHERWISE, PLACE AT DESIRED STOPPING POINT. PARALLEL TO CROSSROAD CENTERLINE, WHERE POSSIBLE
PAINTED MEDIANS	2 @ 4 (100) WITH 12 (300) DIAGONALS @ 45° NO DIAGONALS USED FOR 4' (1.2 m) WIDE MEDIANS	SOLID	YELLOW: TWO WAY TRAFFIC WHITE: ONE WAY TRAFFIC	11 (280) C-C FOR THE DOUBLE LINE SEE TYPICAL PAINTED MEDIAN MARKING.
GORE MARKING AND CHANNELIZING LINES	8 (200) WITH 12 (300) DIAGONALS @ 45°	SOLID	WHITE	DIAGONALS: 15' (4.5 m) C-C (LESS THAN 30MPH (50 km/h)) 20' (6 m) C-C 30MPH (50 km/h) TO 45MPH (70 km/h) 30' (9 m) C-C (OVER 45MPH (70 km/h))
RAILROAD CROSSING	24 (600) TRANSVERSE LINES; "RR" IS 6" (1.8 m) LETTERS; 16 (400) LINE FOR "X"	SOLID	WHITE	SEE STATE STANDARD 780001 AREA OF: "R"=3.6 SQ. FT. (0.33 m <sup>2</sup> ) EACH "X"=54.0 SQ. FT. (5.0 m <sup>2</sup> )
SHOULDER DIAGONALS	12 (300) @ 45°	SOLID	WHITE - RIGHT YELLOW - LEFT	50' (15 m) C-C (LESS THAN 30MPH (50 km/h)) 75' (25 m) C-C (30 MPH (50 km/h) TO 45MPH (70 km/h)) 150' (45 m) C-C (OVER 45MPH (70 km/h))

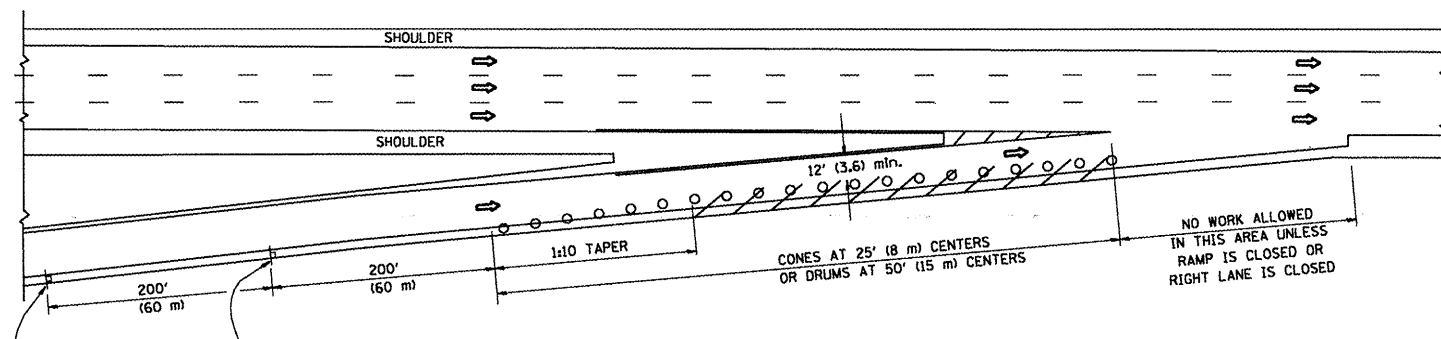
FOR FURTHER DETAILS ON PAVEMENT MARKING REFER TO STANDARD SPECIFICATIONS FOR ROAD AND BRIDGE CONSTRUCTION AND STATE STANDARD 780001.

All dimensions are in inches (millimeters) unless otherwise shown.

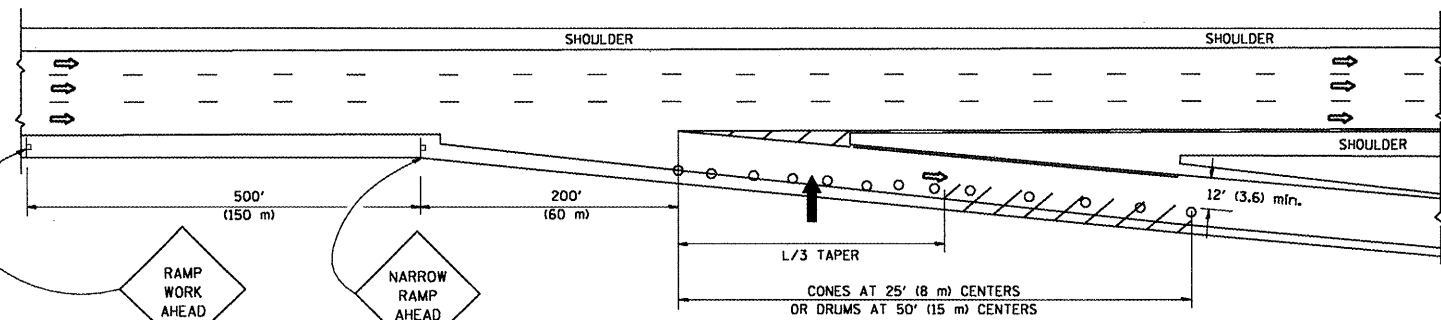
Rev. Sheet 8-27-08

PARTIAL RAMP CLOSURE DETAILS

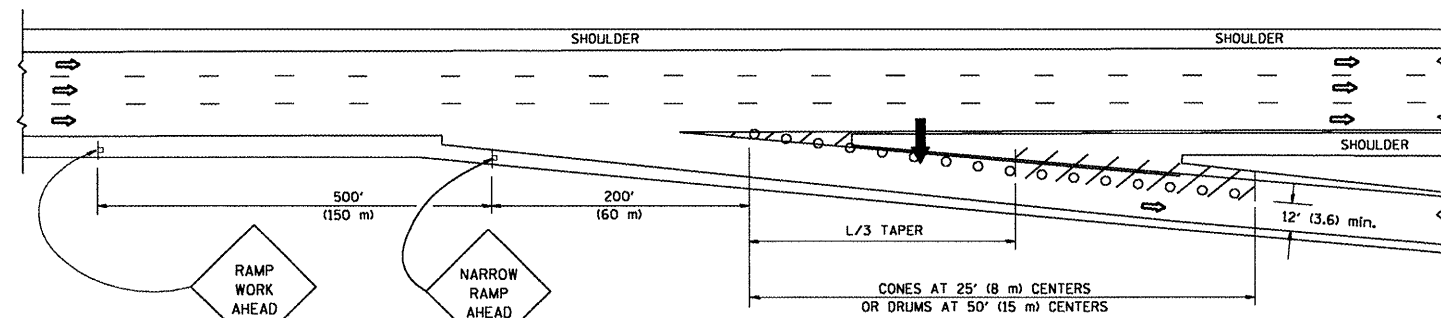
SHOULDER CLOSURE DETAILS



TYPICAL ENTRANCE RAMP



TYPICAL EXIT RAMP



TYPICAL EXIT RAMP

SYMBOLS

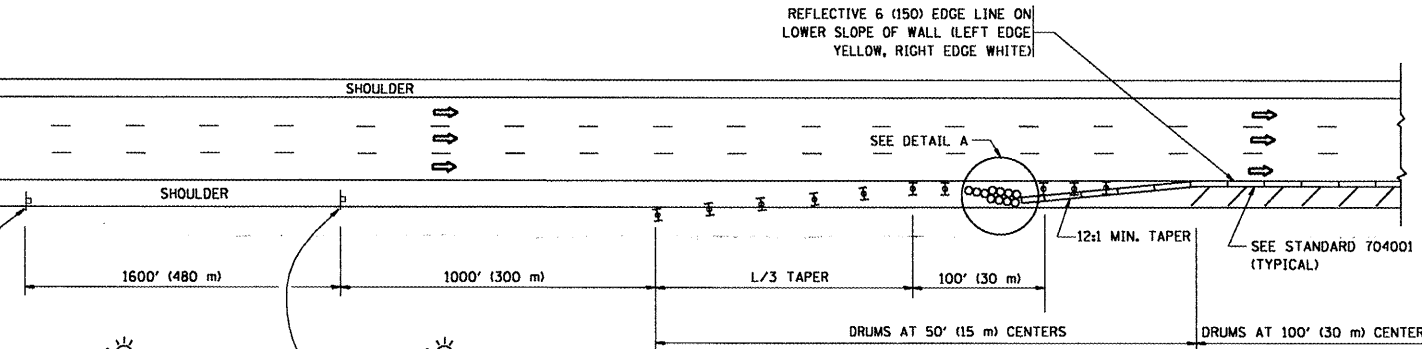
- ➔ ARROWBOARD
- ▨ WORK AREA
- ┼ SIGN ON PORTABLE OR PERMANENT SUPPORT
- FLAGGER WITH CONTROL SIGN
- ⊕ TYPE II BARRICADE, DRUM OR VERTICAL BARRICADE WITH STEADY BURN MONO-DIRECTIONAL LIGHT
- CONE, DRUM OR BARRICADE

GENERAL NOTES

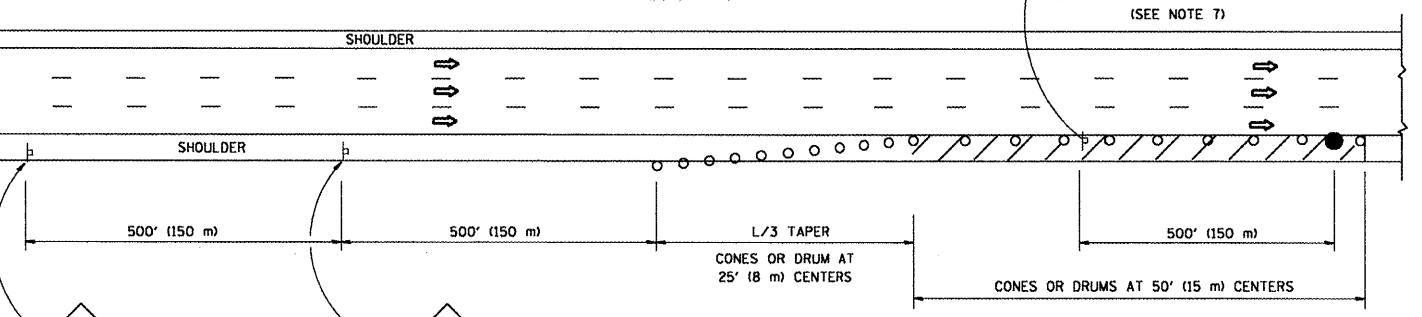
1. THE "L" DISTANCE EQUALS:  

SPEED LIMIT	FORMULAS
45 mph (80 km/h)	METRIC ENGLISH
OR GREATER:	$L=0.65(WXS)$ $L=(WXS)$

W = WIDTH OF OFFSET IN FEET (METERS)  
 S = NORMAL POSTED SPEED MPH (KM/H)
2. PLASTIC DRUMS WITH HIGH PERFORMANCE REFLECTIVE SHEETING AND STEADY BURNING LIGHTS ARE REQUIRED FOR ALL NIGHTTIME CLOSURES.
3. ALL SIGNS SHALL BE POST MOUNTED IF THE CLOSURE TIME EXCEEDS FOUR DAYS.
4. FLASHING LIGHTS SHALL BE USED DURING THE HOURS OF DARKNESS AND SHALL BE INSTALLED ABOVE THE FIRST TWO SETS OF SIGNS.



PERMANENT SHOULDER CLOSURE



DAYTIME SHOULDER CLOSURE

THIS DETAIL IS USED WHERE:  
 1. VEHICLES, EQUIPMENT, WORKERS OR THEIR ACTIVITIES ENCROACH IN AN AREA CLOSER THAN 15' (4.5 m) TO THE EDGE OF PAVEMENT FOR A PERIOD IN EXCESS OF 15 MINUTES.

ARRAY DESIGN PER MANUFACTURER TO BE NCHRP 350 COMPLIANT FOR POSTED SPEED.

DETAIL "A"  
 IMPACT ATTENUATOR, TEMPORARY  
 (SEE NOTE 5)

ALL DIMENSIONS ARE IN INCHES (MILLIMETERS) UNLESS OTHERWISE SHOWN.

STATE OF ILLINOIS  
 DEPARTMENT OF TRANSPORTATION

TRAFFIC CONTROL DETAILS FOR FREEWAY  
 SHOULDER CLOSURES AND PARTIAL RAMP CLOSURES

Rev. sheet 8-27-08

FILE NAME =	USER NAME = wilgreendp	DESIGNED -	REVISED - J.A.F. 12-02	SCALE: NONE	SHEET NO. 1 OF 1 SHEETS	STA.	TO STA.	F.A. RTE.	SECTION	COUNTY	TOTAL SHEETS	SHEET NO.
\\dist\ntfs2\users\wilgreendp\Desktop\Ramp Details\tcl7.dgn	DRAWN - D.W.S.	REVISED - 04-03	VAR.					2008-050 PP	COOK	12	12	
PLOT SCALE = 1/8" = 1'-0"	CHECKED -	REVISED - J.A.F. 12-06	TC-17									
PLOT DATE = 8/15/2008	DATE - 11-96	REVISED - S.P.B. 01-07	CONTRACT NO. 60E99									
								FED. ROAD DIST. NO. 1 ILLINOIS FED. AID PROJECT				