

F.A.I. RTE.	SECTION	COUNTY	TOTAL SHEETS	SHEET NO.
57	*	WILL	303	24
STA.		TO STA.		
FED. ROAD DIST. NO.		ILLINOIS	FED. AID PROJECT	
*9911(2) R-389-1B-1-BR-2		CONTRACT: 62253		

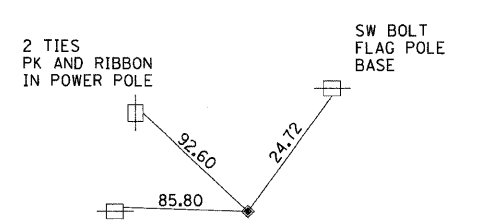
HORIZONTAL CONTROL POINT DATA

POINT NUMBER	COORDINATE		LOCATION ALONG ALIGNMENT				
	NORTH	EAST	MANHATTAN-MONEE ROAD I-57	RAMP A	RAMP B	RAMP C	RAMP D
2	1,734,269.04	1,139,635.02	14017+45.50, 15.63' LT				
3	1,734,307.50	1,141,508.01	14036+18.87, 19.02' LT				
4	1,734,252.37	1,139,579.82	14016+89.99, 0.00' (POT)				
5	1,734,240.04	1,140,053.95	14021+63.81, 21.20' RT				
6	1,734,280.52	1,141,119.42	14032+29.84, 0.68' RT	100+00.59, 0.34' RT	237+62.02, 0.00' (POT)		
7	1,734,290.69	1,141,633.91	14037+44.44, 0.15' RT	1348+92.47, 0.55' LT			
8	1,734,300.06	1,142,128.94	14042+39.55, 0.05' RT				419+23.82, 0.00' (POT)
9	1,734,271.80	1,142,983.97	14050+93.91, 44.30' RT				
10	1,734,351.23	1,144,859.64	14069+70.73, 0.00' (POT)				
11	1,734,947.08	1,141,739.31				307+49.99, 28.10' LT (PI CC211C1)	
12	1,736,162.06	1,141,763.01				319+59.95, 0.00' (POT)	
13	1,738,127.98	1,141,783.45		1387+32.67, 0.00' (POT)			
14	1,738,108.65	1,141,726.05		1387+11.12, 56.59' RT			
15	1,737,491.98	1,141,692.82			204+04.90, 2.75' LT		
16	1,736,981.64	1,141,672.87			209+15.63, 2.64' LT		
17	1,736,276.96	1,141,642.45			216+20.96, 0.38' RT		
18	1,736,112.65	1,141,648.45			217+84.49, 12.00' LT		
19	1,735,184.42	1,141,563.15			227+08.14, 38.70' LT (PI CB211C1)		
20	1,733,601.09	1,141,526.42		107+87.51, 27.46' LT (PI CA211C1)			
21	1,732,449.74	1,141,505.89		119+33.95, 0.00' (POT)			
22	1,732,379.05	1,141,558.59	1329+79.35, 0.00' (POT)				
23	1,732,511.84	1,141,620.20					400+00.00, 0.00' (POT)
24	1,733,419.86	1,141,704.58					409+04.56, 35.30' LT (PI CD211C1)
25	1,734,242.65	1,141,112.39		100+29.47, 25.82' RT			
26	1,734,717.75	1,141,147.19			233+23.36, 11.88' RT		
27	1,734,691.22	1,141,110.53			233+60.20, 35.30' RT (PI CB211C2)		
28	1,734,270.32	1,142,099.27					418+94.53, 30.10' LT
29	1,733,820.36	1,142,062.80					414+33.56, 8.54' RT
30	1,733,909.62	1,142,134.70					415+41.17, 32.00' RT (PI CD211C2)

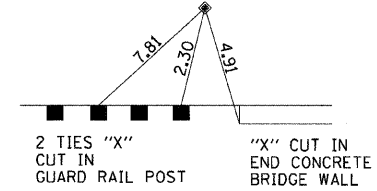
BENCHMARKS

BM#	DESCRIPTION	ELEVATION
BM#1	"□" CUT IN 3' HDW IN S.W. QUAD. OF I-57 & MANHATTAN MONEE RD	Elev. 780.74
BM#2	"□" CUT IN BRIDGE WALL S.W. CORNER OF BRIDGE MONEE ROAD OF I-57	Elev. 804.20
BM#3	"□" CUT IN CONC BASE L.P. IN N.W. QUAD OF WEST RAMPS	Elev. 794.84
BM#4	IRON ROD IN C-C MONEE ROAD & RIDGELAND	Elev. 783.22
BM#5	"□" CUT IN CONC. BASE OF L.P. IN N.E. QUAD OF EAST RAMPS OF I-57 & MONEE ROAD	Elev. 796.46
BM#6	"X" IN S.W. BOLT FIRE HYDRANT S. SIDE MONEE ROAD BETWEEN IRON SKILLET & SUPER 8	Elev. 785.55
BM#7	"□" CONC. BASE OF L.P. IN GRASS MEDIAN OF I-57 *MCD2 ±800' N. OF MONEE ROAD BRIDGE	Elev. 774.72
BM#8	"□" CUT IN CONC BASE OF L.P. IN GRASS MEDIAN I-57 *MCD2 1400 N OF MONEE ROAD BRIDGE	Elev. 777.30
BM#9	8" SPIKE IN W SHOULDER OF S.B. I-57	Elev. 782.20
BM#10	PK NAIL IN W. SHOULDER OF S.B I-57	Elev. 785.75
BM#11	PK NAIL IN W. SHOULDER OF S.B I-57	Elev. 784.74
BM#12	"□" IN CONC SIGN BASE W. SIDE I-57 ±3800' OF MONEE ROAD	Elev. 777.17

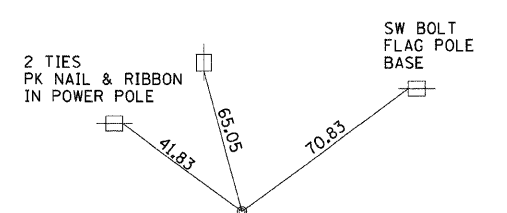
HORIZONTAL CONTROL POINTS



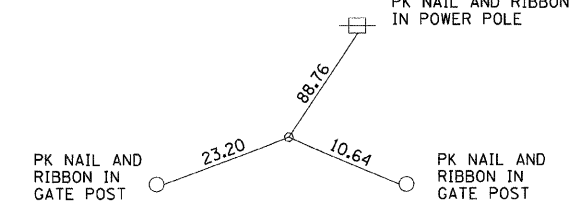
8" SPIKE NE CORNER OF RIDGELAND AND MONEE ROAD
HORIZONTAL CONTROL POINT NO. 2



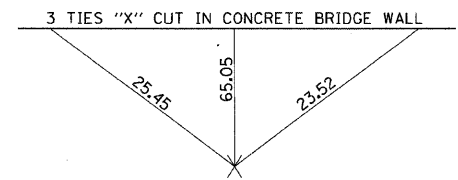
8" SPIKE IN GRASS IN NW QUADRANT OF BRIDGE AT I-57 AND MONEE
HORIZONTAL CONTROL POINT NO. 3



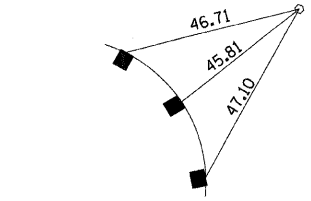
IRON ROD C-C RIDGELAND AND MANHATTAN - MONEE ROAD
HORIZONTAL CONTROL POINT NO. 4



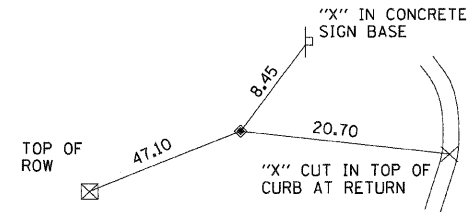
PK NAIL IN ENTRANCE TO NURSERY SOUTH SIDE MONEE ROAD
HORIZONTAL CONTROL POINT NO. 5



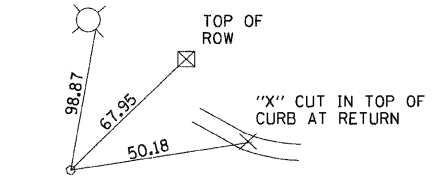
"X" CUT IN C-C IN CONCRETE BRIDGE I-57 AND MONEE ROAD
HORIZONTAL CONTROL POINT NO. 7



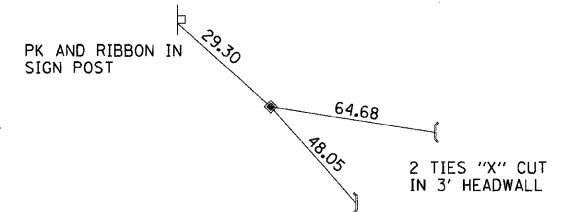
PK NAIL C-C EAST RAMPS AND MONEE ROAD
HORIZONTAL CONTROL POINT NO. 8



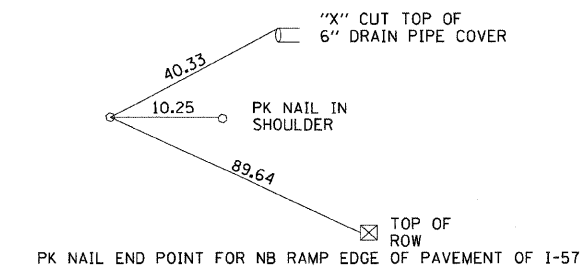
8" SPIKE IN GRASS NEAR ENTRANCE TO IRON SKILLET RESTAURANT
HORIZONTAL CONTROL POINT NO. 9



PK NAIL C-C MONEE ROAD AND EGYPTIAN TRAIL TOP SPINDLE FIRE HYDRANT
HORIZONTAL CONTROL POINT NO. 10



8" SPIKE PI FOR NB ENTRANCE RAMP TO I-57
HORIZONTAL CONTROL POINT NO. 11



PK NAIL END POINT FOR NB RAMP EDGE OF PAVEMENT OF I-57
HORIZONTAL CONTROL POINT NO. 12

REVISIONS	
NAME	DATE

ILLINOIS DEPARTMENT OF TRANSPORTATION
I-57 AT MANHATTAN - MONEE ROAD
ALIGNMENT, TIES, AND BENCHMARKS
2 OF 3
SCALE: VERT. NTS
DATE 9/19/2008
DRAWN BY ML, NS
CHECKED BY TMW

Clark Dietz
ENGINEERS
DESIGN FIRM REGISTRATION No. 184-000450
118 SOUTH CLINTON STREET SUITE 600
CHICAGO, IL 60661
PHONE : 312.648.9900
FAX : 312.648.0204

p:\022231\01\ans\shree\102231\ATPL 0002.dgn 8/17/2008