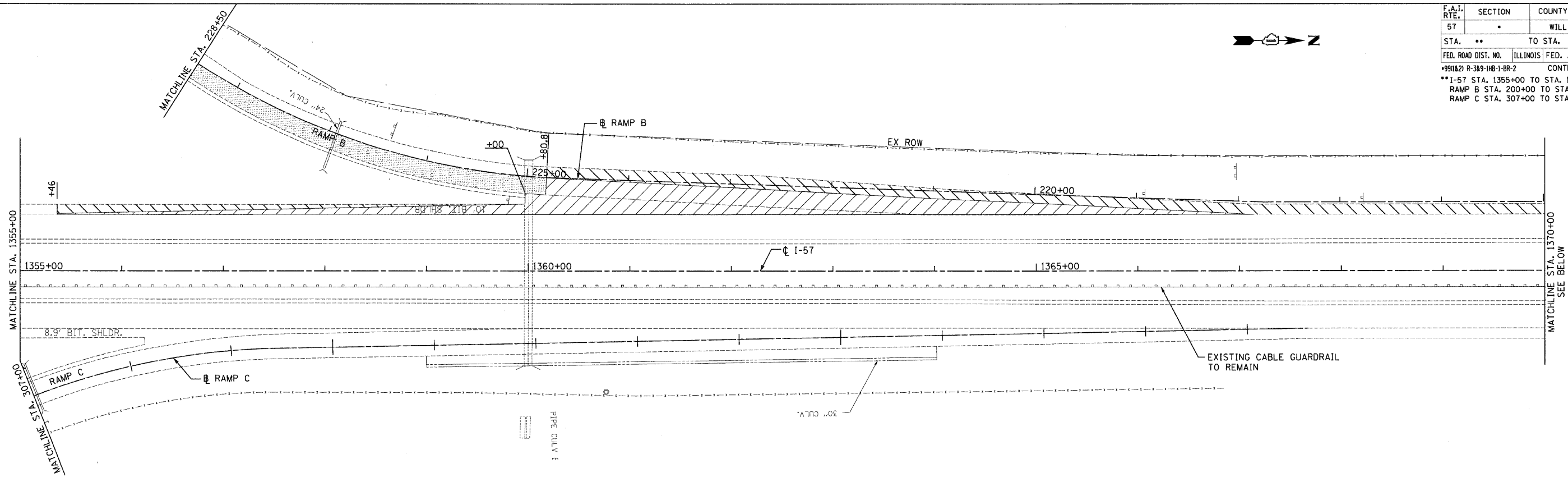
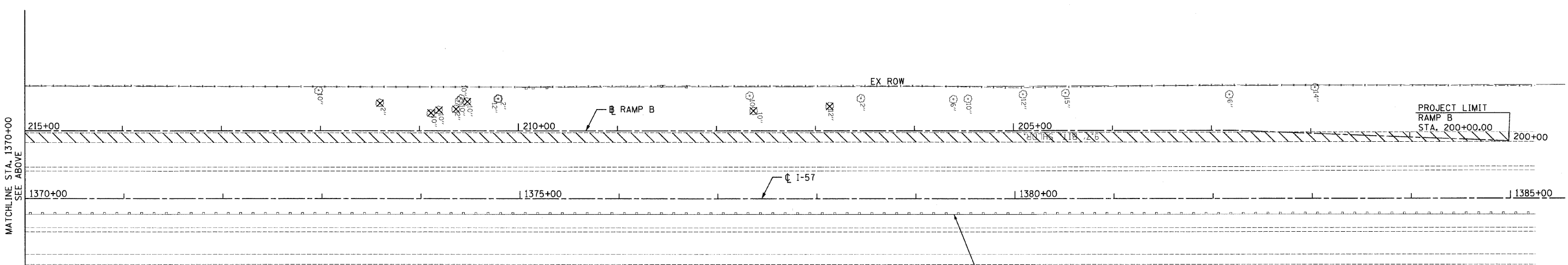


F.A.I. RTE.	SECTION	COUNTY	TOTAL SHEETS	SHEET NO.
57	.	WILL	303	29
STA. .. TO STA. ..		ILLINOIS FED. AID PROJECT		
FED. ROAD DIST. NO.		CONTRACT: 62253		
*991&2) R-389-1H8-1-BR-2		** I-57 STA. 1355+00 TO STA. 1365+00		
		RAMP B STA. 200+00 TO STA. 226+00		
		RAMP C STA. 307+00 TO STA. 319+59.95		



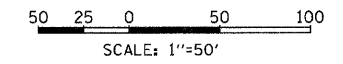
I-57



LEGEND	
	PAVEMENT REMOVAL
	PAVED SHOULDER REMOVAL
	BRIDGE APPROACH PAVEMENT REMOVAL
	CONCRETE CURB AND GUTTER REMOVAL -SEE TYPICAL SECTIONS FOR LOCATION OF TYPE AND SIZE
	DRIVEWAY PAVEMENT REMOVAL
	HOT-MIX ASPHALT PAVEMENT REMOVAL -SEE TYPICAL SECTIONS FOR REMOVAL DEPTH
	PAVED DITCH REMOVAL
	GUARDRAIL REMOVAL
	TREE REMOVAL, IN. DIA.
	AGGREGATE SHOULDER REMOVAL -TO BE INCLUDED IN THE UNIT PRICE FOR EARTH EXCAVATION

- NOTES:**
- 1) SEE DRAINAGE PLAN FOR DRAINAGE STRUCTURE AND SYSTEM REMOVAL
  - 2) SEE BRIDGE PLAN FOR ALL BRIDGE RELATED REMOVAL
  - 3) SEE GENERAL NOTES FOR SPECIAL AND HAZARDOUS WASTE REMOVAL

EXISTING CABLE GUARDRAIL TO REMAIN



REVISIONS	
NAME	DATE

ILLINOIS DEPARTMENT OF TRANSPORTATION  
 I-57 AT MANHATTAN - MONEE ROAD  
 EXISTING CONDITIONS  
 I-57  
 STA. 1355+00 TO STA. 1385+25  
 SCALE: VERT. NTS  
 HORIZ. 1"=50'  
 DATE 9/19/2008  
 DRAWN BY BDC, GH  
 CHECKED BY TMW

**Clark Dietz**  
 ENGINEERS  
 DESIGN FIRM REGISTRATION No. 184-000450  
 SUITE 600  
 118 SOUTH CLINTON STREET  
 CHICAGO, IL 60661  
 PHONE : 312.648.9900  
 FAX : 312.648.0204

I-57

P:\102233\Plans\Sheet\102233\DWG\102233.DWG  
 8/1/2008