

F.A.I. RTE.	SECTION	COUNTY	TOTAL SHEETS	SHEET NO.
57		WILL	303	35
STA. **		TO STA. **		
FED. ROAD DIST. NO.		ILLINOIS FED. AID PROJECT		
+991A21 R-389-1B-1-BR-2		CONTRACT : 62253		
+RAMP A STA. 101+50 TO STA. 103+00		RAMP B STA. 228+00 TO STA. 234+00		

PROP. CURVE CB211C2
 PI STA. = 233+69.17
 $\Delta = 43^\circ 46' 58''$ (LT)
 $D = 12^\circ 36' 47''$
 $R = 454.26'$
 $T = 182.53'$
 $L = 347.12'$
 $E = 35.30'$
 $\theta = 8\%$
 T.R. = -----
 S.E. RUN = -----
 P.C. STA. = 231+86.64
 P.T. STA. = 235+33.76

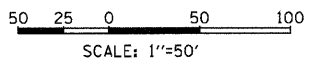
EXIST. CURVE CA211C1
 PI STA. = 107+92.60
 $\Delta = 31^\circ 55' 14''$ (RT)
 $D = 8^\circ 22' 00''$
 $R = 684.81'$
 $T = 195.85'$
 $L = 381.52'$
 $E = 27.46'$
 $\theta = -----$
 T.R. = -----
 S.E. RUN = -----
 P.C. STA. = 105+96.75
 P.T. STA. = 109+78.27

PAVEMENT LEGEND

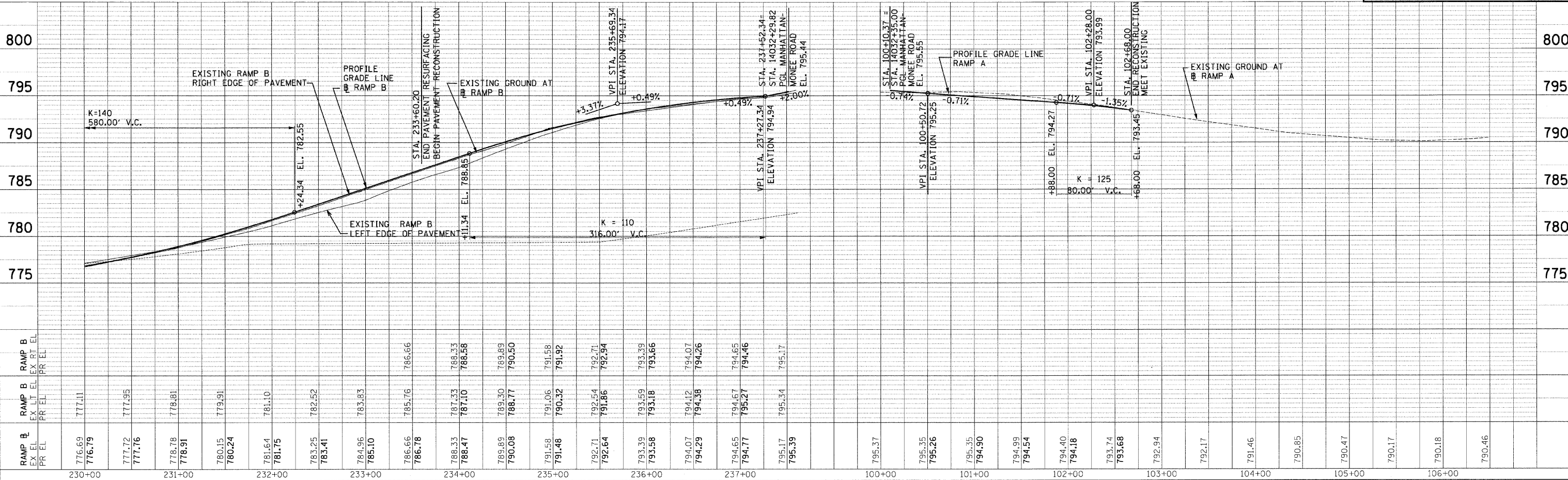
	PAVEMENT RESURFACING
	PAVEMENT WIDENING
	HOT-MIX ASPHALT SHOULDER
	PCC SHOULDER

SEE SHEET 2, COMMITMENT NO. 1 FOR INFORMATION REGARDING RAMP B.

- NOTES
- 1) SEE EXISTING CONDITIONS SHEETS FOR REMOVAL ITEMS
 - 2) SEE DRAINAGE AND UTILITIES SHEETS FOR DRAINAGE AND UTILITIES ITEMS
 - 3) SEE GENERAL NOTES FOR SPECIAL AND HAZARDOUS WASTE REMOVAL



DESIGN FIRM REGISTRATION No. 184-000450
Clark Dietz ENGINEERS
 118 SOUTH CLINTON STREET SUITE 600 CHICAGO, IL 60661
 PHONE : 312.648.9600 FAX : 312.648.0204



PLAN AND PROFILE: RAMP A - STA. 101+50 TO STA. 109+00 AND RAMP B - STA. 230+00 TO STA. 236+50

PLAN	REVISIONS	DATE
NO. 1	BY	
NO. 2	BY	
NO. 3	BY	
NO. 4	BY	
NO. 5	BY	
NO. 6	BY	
NO. 7	BY	
NO. 8	BY	
NO. 9	BY	
NO. 10	BY	

PROFILE	REVISIONS	DATE
NO. 1	BY	
NO. 2	BY	
NO. 3	BY	
NO. 4	BY	
NO. 5	BY	
NO. 6	BY	
NO. 7	BY	
NO. 8	BY	
NO. 9	BY	
NO. 10	BY	

8/1/2008