

F.A.I. RTE.	SECTION	COUNTY	TOTAL SHEETS	SHEET NO.
57	*	WILL	303	52
STA. 1330+00		TO STA. 1343+50		
FED. ROAD DIST. NO.		ILLINOIS	FED. AID PROJECT	
+991(2) R-389-1HB-1-BR-2		CONTRACT: 62253		

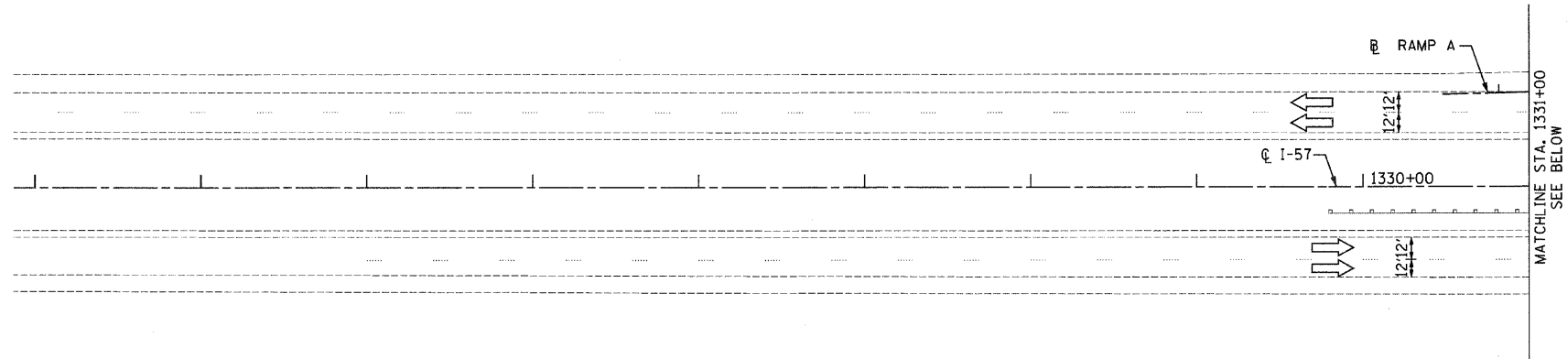


I-57 TRAFFIC CONTROL LEGEND

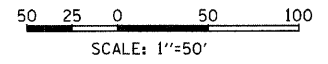
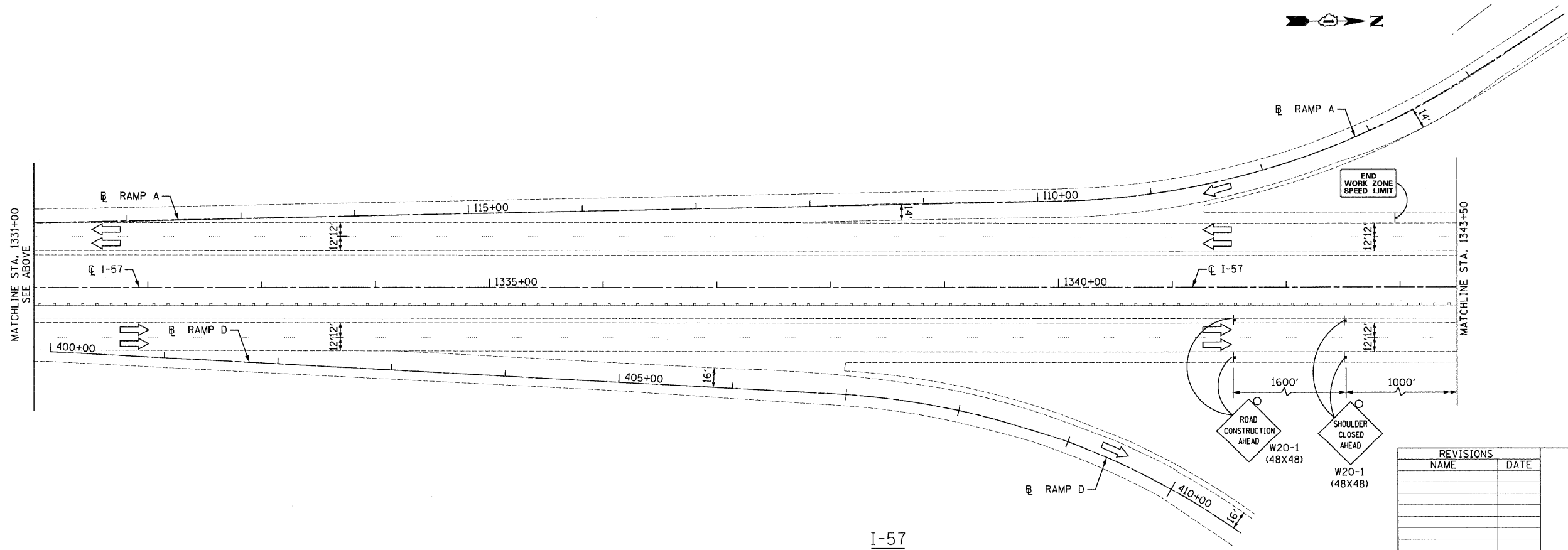
- TEMPORARY PAVEMENT
- WORK AREA
- DIRECTION OF TRAFFIC
- ARROW BOARD
- TRAFFIC SIGN
- BARRICADE TYPE II, DRUM OR VERTICAL BARRICADE WITH MONO-DIRECTIONAL STEADY BURNING LIGHT (SEE NOTES FOR SPACING)
- BARRICADE TYPE III WITH STEADY BURNING LIGHT
- TEMPORARY PAVEMENT MARKINGS, TYPE III**
- SKIP-DASH WHITE, 5"
- SKIP-DASH YELLOW, 5"
- STOP LINE, 24"
- SOLID LINE, 4"
- DOUBLE CENTERLINE, YELLOW, 4"
- DOTTED LINES (2'-6" SPACE), 4"
- TEMPORARY BARRIER WALL WITH BARRIER WALL REFLECTORS
- TEMPORARY IMPACT ATTENUATORS

I-57 TRAFFIC CONTROL NOTES

BARRICADE TYPE II	
LOCATION	SPACING
TANGENT	100' CTS
CURVES	25' CTS
RETURNS	25' CTS
SHOULDER TAPERS	50' CTS
TAPERS	12' CTS



**I-57
STAGE II**



Clark Dietz
ENGINEERS

DESIGN FIRM REGISTRATION
No. 184-000450
118 SOUTH CLINTON STREET
SUITE 600
CHICAGO, IL 60661
PHONE : 312.648.9900
FAX : 312.648.0204

REVISIONS	
NAME	DATE

ILLINOIS DEPARTMENT OF TRANSPORTATION
I-57 AT MANHATTAN - MONEE ROAD
SUGGESTED STAGES OF CONSTRUCTION
AND
TRAFFIC CONTROL
I-57
STAGE II

SCALE: VERT. NTS
HORIZ. 1"=50'
DATE 9/19/2008

DRAWN BY KLM
CHECKED BY TMW

**I-57
STAGE II**

p:\022331\pl\lma\sheet\102231CSP1_0221.dgn
 8/1/2008