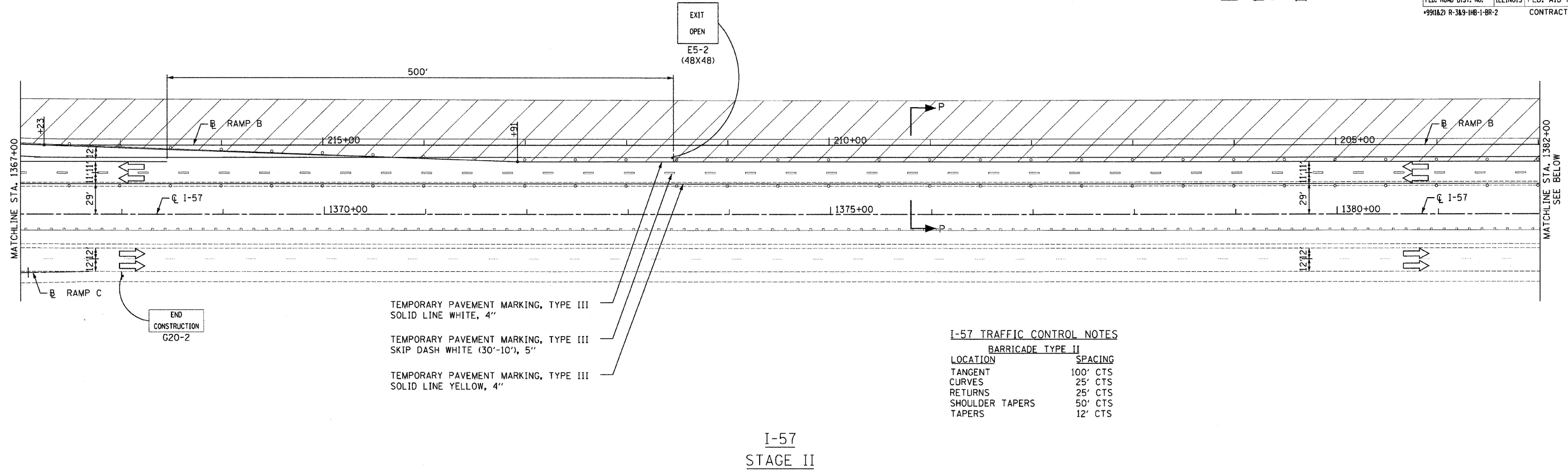
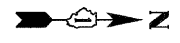


F.A.I. RTE.	SECTION	COUNTY	TOTAL SHEETS	SHEET NO.
57		WILL	303	54
STA. 1367+00 TO STA. 1390+00				
FED. ROAD DIST. NO.		ILLINOIS FED. AID PROJECT		
+991627 R-389-1HB-1-BR-2		CONTRACT: 62253		

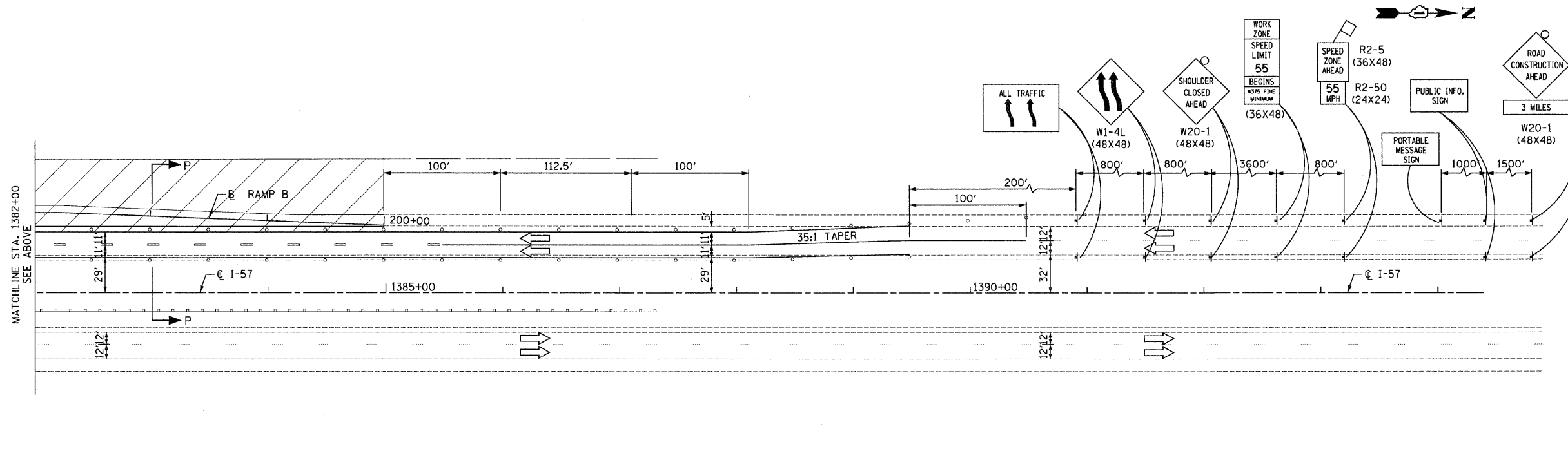


I-57 TRAFFIC CONTROL NOTES

BARRICADE TYPE II

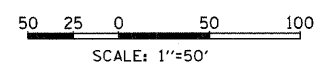
LOCATION	SPACING
TANGENT	100' CTS
CURVES	25' CTS
RETURNS	25' CTS
SHOULDER TAPERS	50' CTS
TAPERS	12' CTS

**I-57
STAGE II**



I-57 TRAFFIC CONTROL LEGEND

- TEMPORARY PAVEMENT [Hatched pattern]
- WORK AREA [Diagonal hatched pattern]
- DIRECTION OF TRAFFIC [Arrow]
- ARROW BOARD [Arrow with text]
- TRAFFIC SIGN [Sign symbol]
- BARRICADE TYPE II, DRUM OR VERTICAL BARRICADE WITH MONO-DIRECTIONAL STEADY BURNING LIGHT (SEE NOTES FOR SPACING) [Barricade symbol]
- BARRICADE TYPE III WITH STEADY BURNING LIGHT [Barricade symbol]
- TEMPORARY PAVEMENT MARKINGS, TYPE III
 - SKIP-DASH WHITE, 5" [Line pattern]
 - SKIP DASH YELLOW, 5" [Line pattern]
 - STOP LINE, 24" [Line pattern]
 - SOLID LINE, 4" [Line pattern]
 - DOUBLE CENTERLINE, YELLOW, 4" [Line pattern]
 - DOTTED LINES (2'-6" SPACE), 4" [Line pattern]
- TEMPORARY BARRIER WALL WITH BARRIER WALL REFLECTORS [Line pattern]
- TEMPORARY IMPACT ATTENUATORS [Line pattern]



REVISIONS	
NAME	DATE

ILLINOIS DEPARTMENT OF TRANSPORTATION
I-57 AT MANHATTAN - MONEE ROAD
SUGGESTED STAGES OF CONSTRUCTION
AND
TRAFFIC CONTROL
I-57
STAGE II

SCALE: VERT. NTS
HORIZ. 1"=50'
DATE 9/19/2008

DRAWN BY KLM
CHECKED BY TMW

Clark Dietz
ENGINEERS

DESIGN FIRM REGISTRATION
No. 184-000450

118 SOUTH CLINTON STREET
SUITE 600
CHICAGO, IL 60661
PHONE : 312.648.9900
FAX : 312.648.0204

**I-57
STAGE II**

p:\02231\plans\sheet\102231C5PL0223.dgn
 8/17/2008