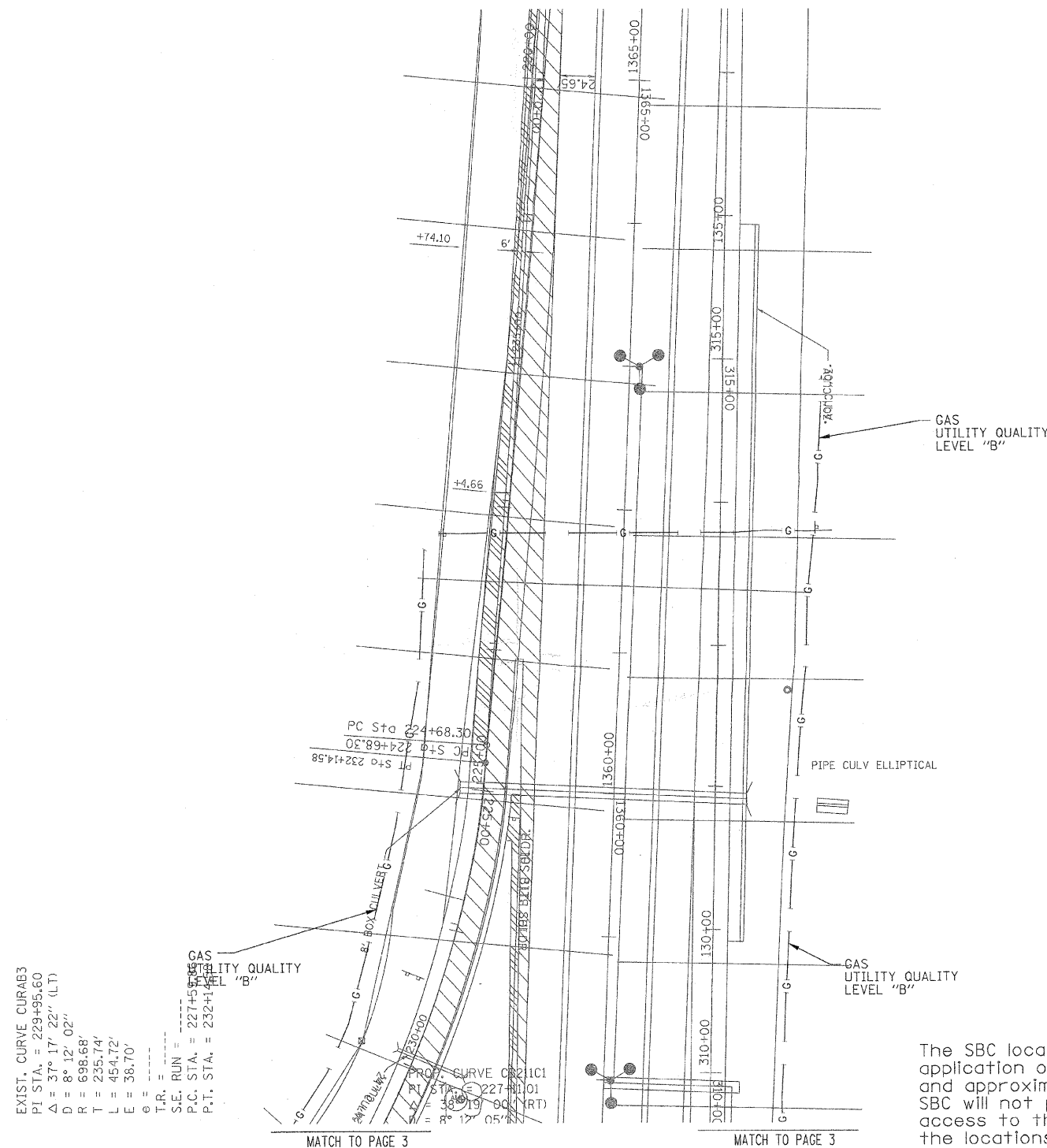
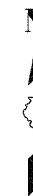


F.A. RTE.	SECTION	COUNTY	TOTAL SHEETS	SHEET NO.
	99(1&2) R-38.9-IHB-IBR-2	Will	303	80
STA.	TO STA.			
FED. ROAD DIST. NO.	ILLINOIS	FED. AID PROJECT		



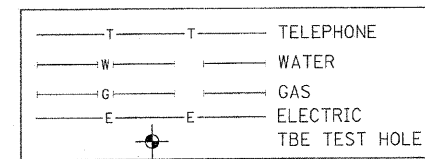
EXIST. CURVE CURAB3
 PI STA. = 229+95.60
 $\Delta = 37^\circ 17' 22''$ (LT)
 $D = 8^\circ 12' 02''$
 $R = 698.68'$
 $T = 235.14'$
 $L = 454.72'$
 $E = 38.70'$
 $\theta =$
 T.R. =
 S.E. RUN =
 P.C. STA. = 227+50.00
 P.T. STA. = 232+14.58

The SBC locations depicted have been obtained through the application of geophysical methods to determine the existence and approximate horizontal position of these facilities. However, SBC will not provide TBE Group, Inc. with utility records nor allow access to their field closures (pedestals/manholes etc.) to help verify the locations of their existing underground facilities. Therefore, TBE is unable to verify the completeness of the SBC locations depicted in accordance with the CI/ASCE Standard 38-02.

TBE GROUP
 CIVIL ENGINEERING * TRANSPORTATION * ENVIRONMENTAL
 * PLANNING * UTILITY ENGINEERING * LOCATING

IL09500254, 256
 TBE SUE PAGE NO: 4 of 5
 Checked by: *[Signature]*

Utility Quality Level "A" : Test Holes
 Utility Quality Level "B" : Designating



Utilities shown in color on these plans as depicted in the legend have been investigated by TBE Group, Inc in accordance with SUE Industry Standards. All other information shown has been provided to TBE Group, Inc by others. TBE's SUE field investigation was performed during the period 4-10-06 through 11-17-06. Changes to utilities after these dates may have been made and therefore may result in variances from this plan. Consideration should be given to updating this plan if deemed advisable prior to final design and construction.

205 W. WACKER DRIVE
 SUITE 1020
 CHICAGO, IL 60606
 (312) 704-1970

REVISIONS	
NAME	DATE

ILLINOIS DEPARTMENT OF TRANSPORTATION
 SUE Investigation of Underground Utilities
 I-57 at Manhattan Monee Road
 Section No. 99(1&2) R-38.9-IHB-IBR-2
 Contract No. 62253
 Monee, IL -Will County
 DRAWN BY : KLC
 SCALE : 1" = 50'