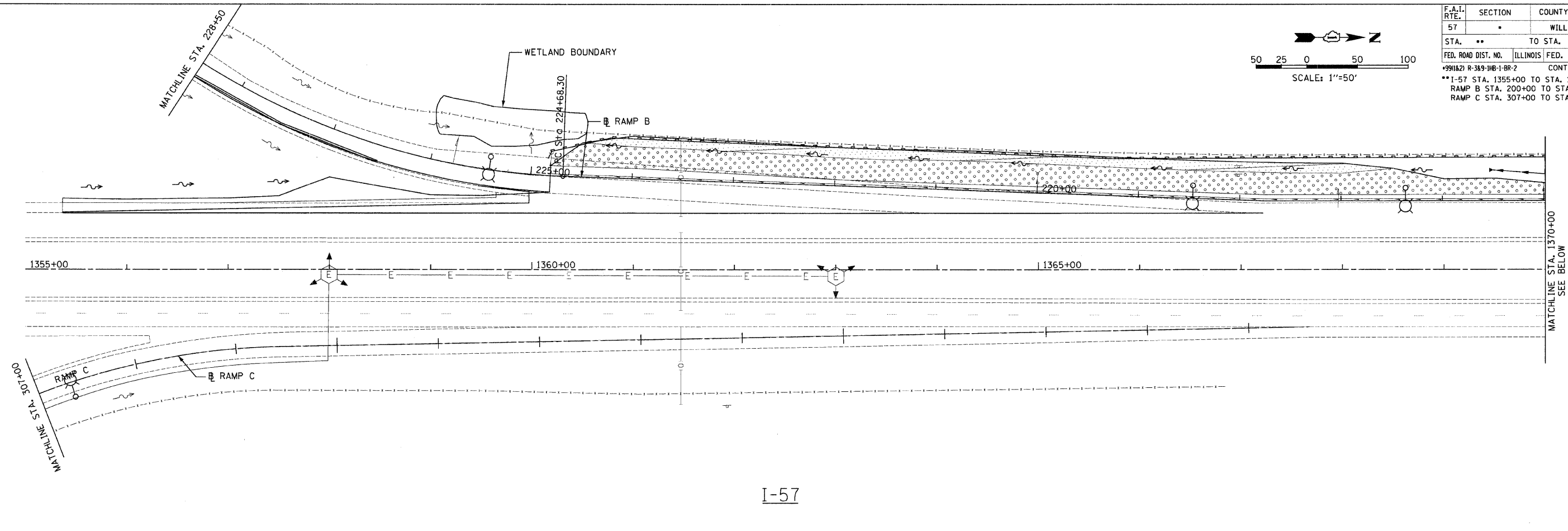
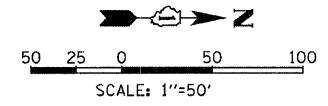
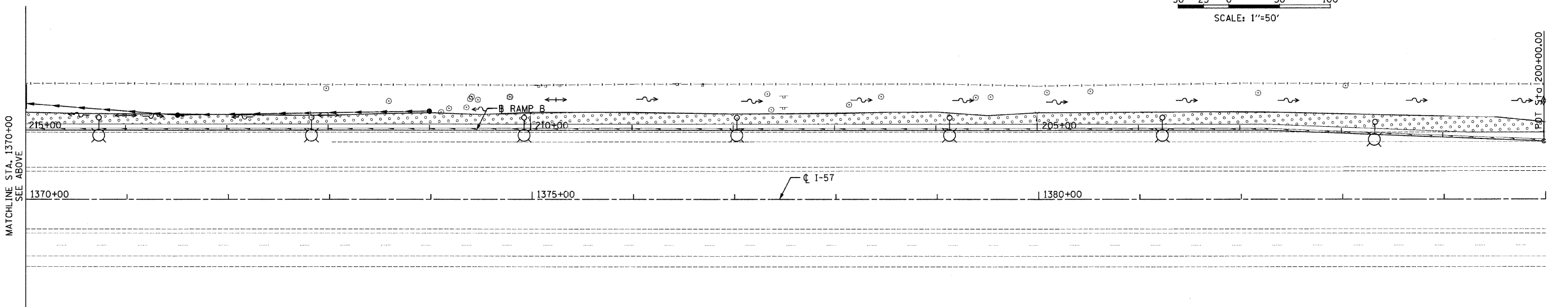
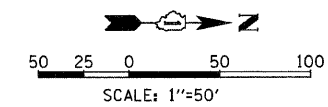


F.A.I. RTE.	SECTION	COUNTY	TOTAL SHEETS	SHEET NO.
57		WILL	303	105
STA. **		TO STA. **		
FED. ROAD DIST. NO.	ILLINOIS	FED. AID PROJECT		
+991121 R-389-11B-1-BR-2	CONTRACT: 62253			
** I-57 STA. 1355+00 TO STA. 1365+00				
RAMP B STA. 200+00 TO STA. 226+00				
RAMP C STA. 307+00 TO STA. 319+59.95				



I-57



I-57

NOTE: SEE MANHATTAN-MONEE ROAD LANDSCAPING DETAILS SHEET FOR LEGEND


REVISIONS	
NAME	DATE

ILLINOIS DEPARTMENT OF TRANSPORTATION
I-57 AT MANHATTAN - MONEE ROAD

LANDSCAPING DETAILS
I-57 / RAMP B

SCALE: VERT. NA
HORIZ. 1"=50'
DATE 9/19/2008

DRAWN BY ML, GH
CHECKED BY TMW



DESIGN FIRM REGISTRATION
No. 184-000460
116 SOUTH CLINTON STREET
SUITE 800
CHICAGO, IL 60661
PHONE : 312.648.9900
FAX : 312.648.0204

p:\022231\plans\sheet\1022231\SP1_0103.dgn
8/17/2008