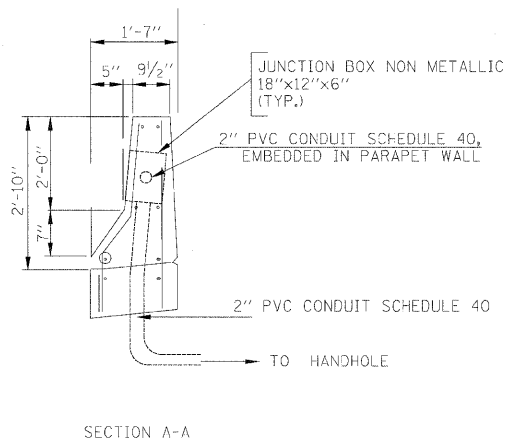
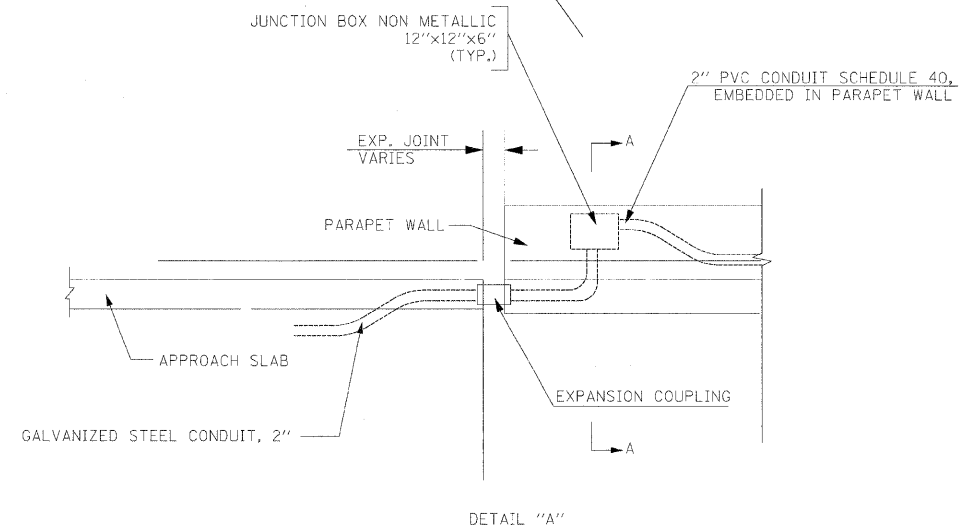
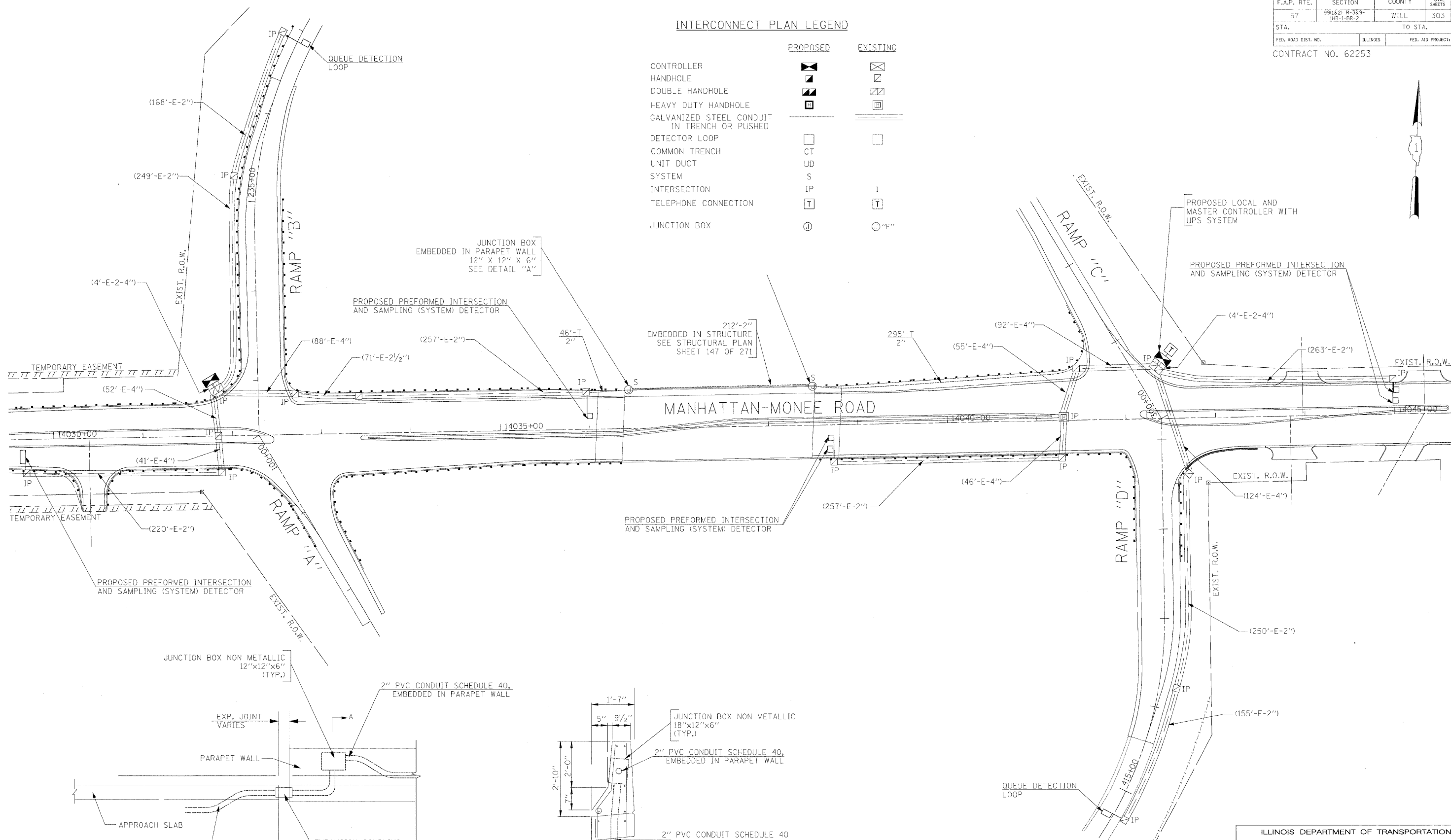


F.A.P. RTE.	SECTION	COUNTY	TOTAL SHEETS	SHEET NO
57	981&2 R-3&3-1B-1-BR-2	WILL	303	121
STA.	TO STA.			
FED. ROAD DIST. NO.	ILLINOIS	FED. AID PROJECT		

CONTRACT NO. 62253

INTERCONNECT PLAN LEGEND

	PROPOSED	EXISTING
CONTROLLER		
HANDHOLE		
DOUBLE HANDHOLE		
HEAVY DUTY HANDHOLE		
GALVANIZED STEEL CONDUIT IN TRENCH OR PUSHED		
DETECTOR LOOP		
COMMON TRENCH	CT	
UNIT DUCT	UD	
SYSTEM	S	
INTERSECTION	IP	I
TELEPHONE CONNECTION	T	T
JUNCTION BOX		



REVISIONS	
NAME	DATE

ILLINOIS DEPARTMENT OF TRANSPORTATION
 INTERCONNECT PLAN
 MANHATTAN-MONEE ROAD AT
 I-57 INERCHANGE
 RAMP A&B TO RAMP C&D

SCALE: 1"=50'
 DATE: 04/09/2007

DRAWN BY: KGP/RDP
 DESIGNED BY: PKG
 CHECKED BY: PKG

GO GANDHI AND ASSOCIATES, INC.
 ENGINEERS AND PLANNERS
 6035 N. NORTHWEST HIGHWAY
 SUITE 306
 CHICAGO, ILLINOIS 60631 TEL. (773) 774-5910