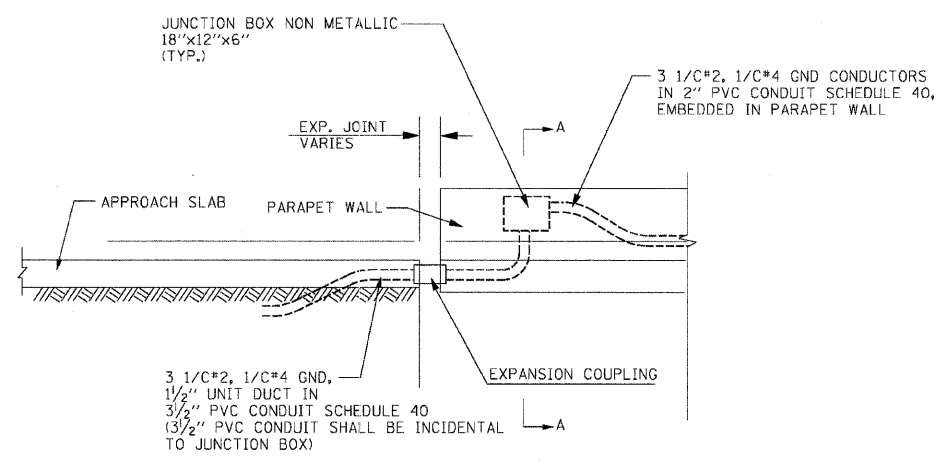
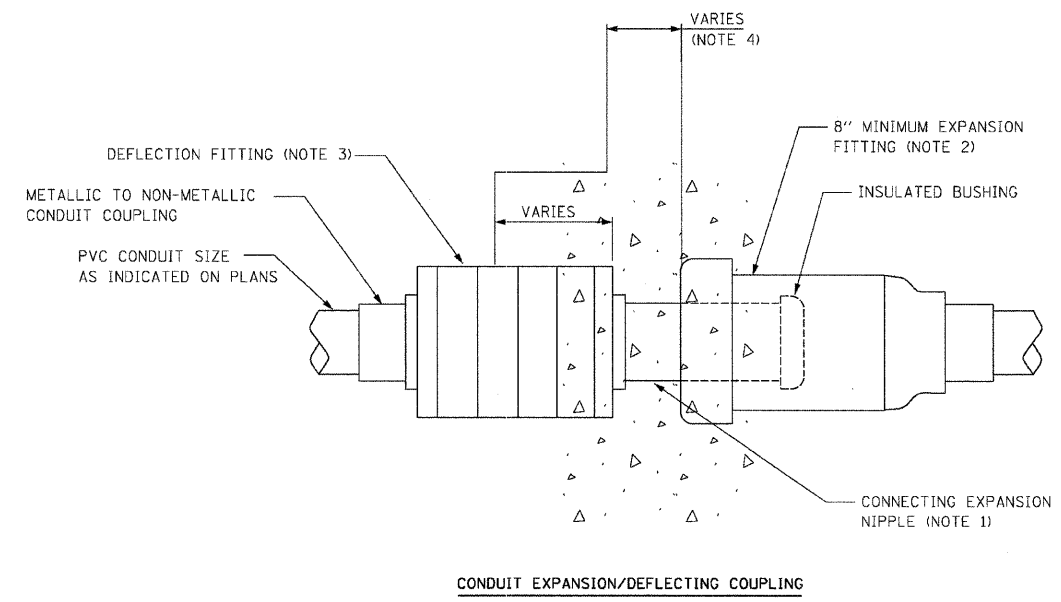
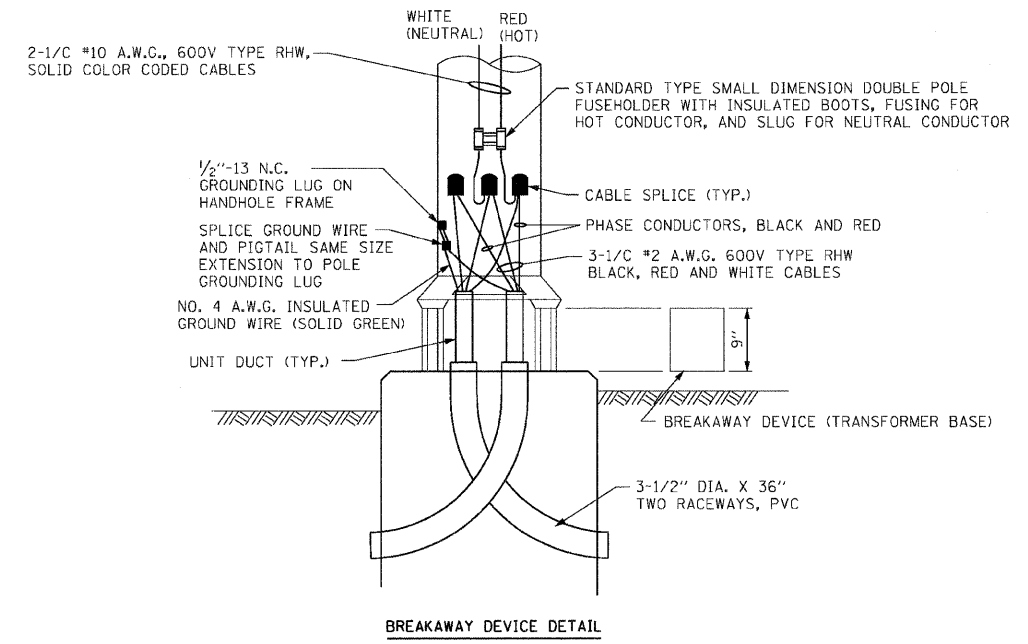
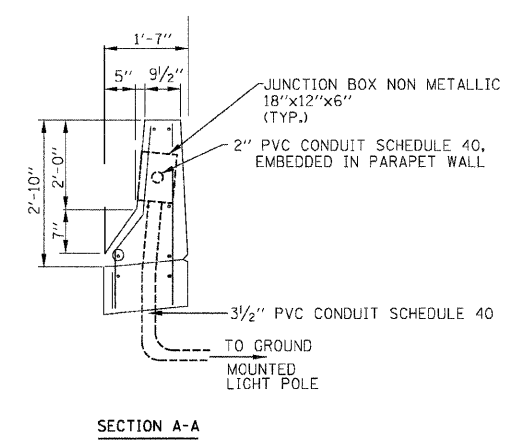


F.A. RTE.	SECTION	COUNTY	TOTAL SHEETS	SHEET NO.
57	991&2 R-3&9-11B-1-BR-2	WILL	303	140
STA.	TO STA.			
FED. ROAD DIST. NO.	ILLINOIS FED. AID PROJECT			



EXPANSION JOINT CONDUIT TRANSITION



- NOTES:
1. PROVIDE REQUIRED LENGTH OF CONNECTING EXPANSION NIPPLE. REFER TO STRUCTURAL DRAWINGS FOR THE EXPANSION JOINT CHARACTERISTICS.
 2. THE BARREL OF THE FITTING SHALL BE FULLY EMBEDDED IN THE CONCRETE OF ONE SIDE OF THE EXPANSION JOINT.
 3. A CAVITY OPENING, IF REQUIRED, SHALL BE 3" LARGER DIA. AND A MAX. DEPTH OF HALF OF THE DEFLECTION FITTING SHALL BE CENTERED IN THE OPENING AND EMBEDDED IN THE CONCRETE ONLY UP TO THE DEFLECTION FITTING CENTER.
 4. REFER TO STRUCTURAL DRAWINGS FOR EACH EXPANSION JOINT WIDTH.

REVISIONS	
NAME	DATE

ILLINOIS DEPARTMENT OF TRANSPORTATION
 MANHATTAN-MONEE ROAD AT I-57
 MISCELLANEOUS LIGHTING DETAILS

SCALE: NONE
 DATE 10/09/2006

DRAWN BY: KGP
 DESIGNED BY: PKG/KGP
 CHECKED BY: PKG

ga GANDHI AND ASSOCIATES, INC.
 ENGINEERS AND PLANNERS
 6055 N. NORTHWEST HIGHWAY
 SUITE 306
 CHICAGO, ILLINOIS 60631 TEL. (773) 774-5910