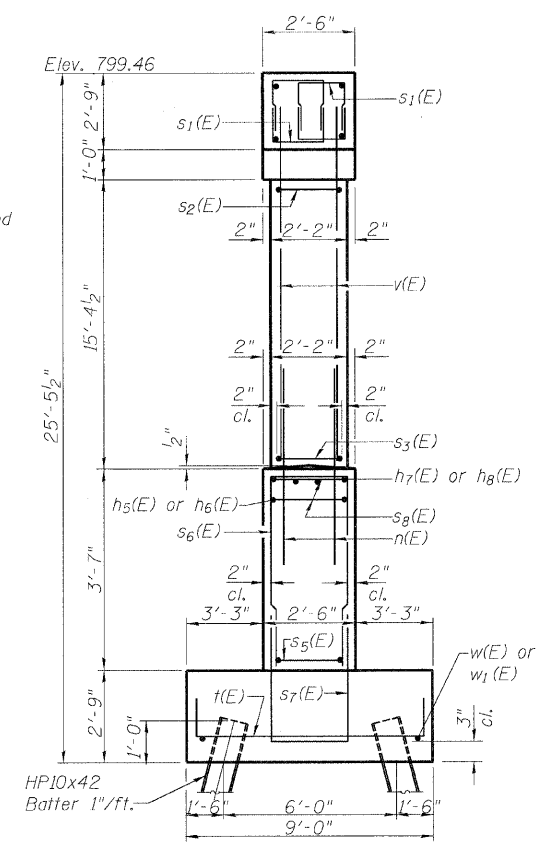
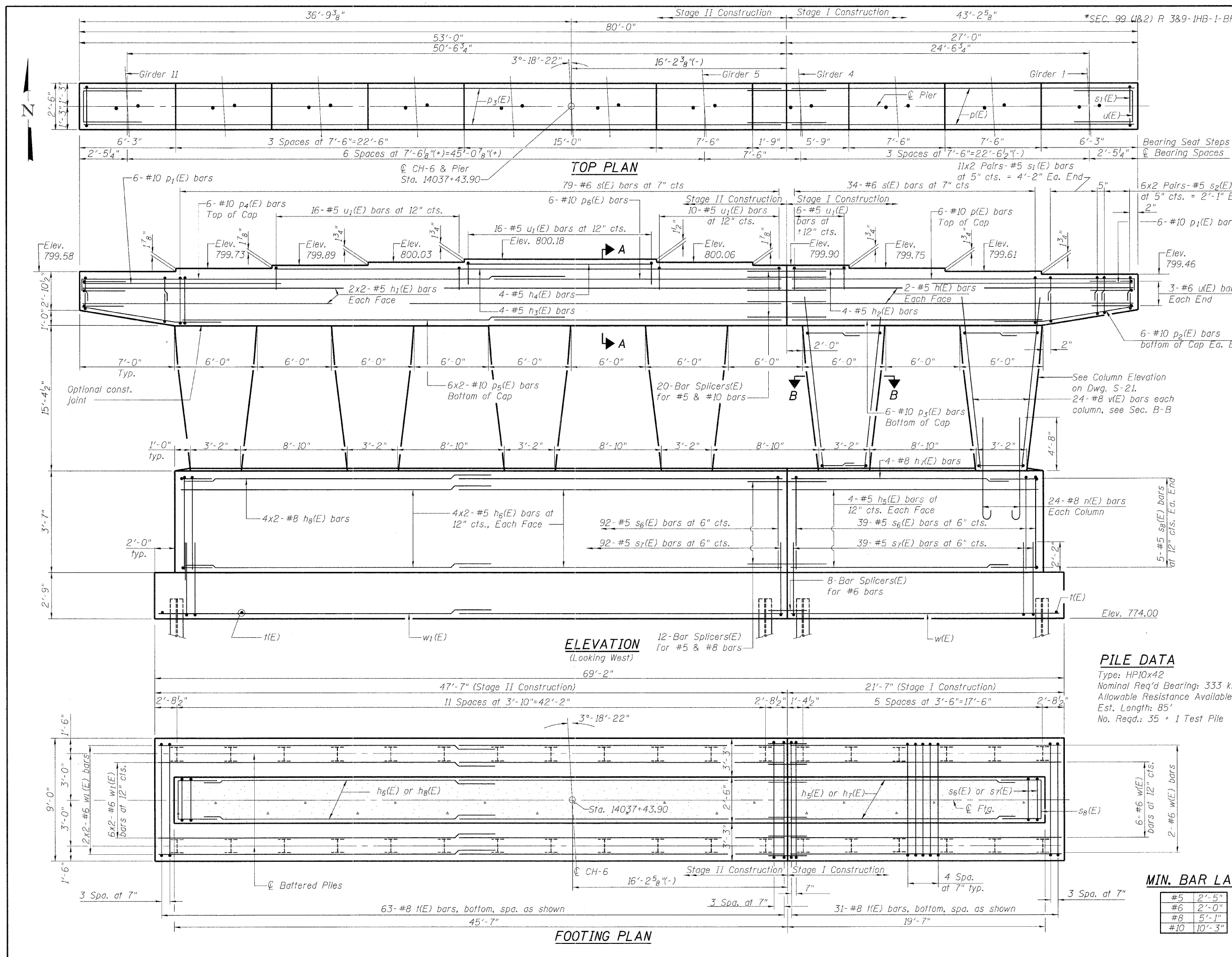


**NOTES:**

1. Pour steps monolithically with cap.
2. Bars indicated thus 20 x 3-#5 etc. indicates 20 lines of bars with 3 lengths per line.
3. For details of Bar Splicers, see Dwg. S-22.
4. For details of piles, see Dwg. S-24.



**PILE DATA**

Type: HP10x42  
 Nominal Req'd Bearing: 333 kips  
 Allowable Resistance Available: 111 kips  
 Est. Length: 85'  
 No. Req'd: 35 + 1 Test Pile

**MIN. BAR LAP**

#5	2'-5"
#6	2'-0"
#8	5'-1"
#10	10'-3"

**PIER**

MANHATTAN-MONEE ROAD (CH-6)  
 OVER I-57  
 F.A. I-57 SEC. 99(182) R 389-  
 IHB-1-BR2  
 WILL COUNTY STA. 14037+43.90  
 STRUCTURE NUMBER 099-4647

**Clark Dietz**  
 ENGINEERS

DESIGN FIRM REGISTRATION  
 No. 184-000450  
 1817 SOUTH NEIL STREET  
 SUITE 100  
 CHAMPAIGN, IL 61820  
 PHONE : 217.373.8900  
 FAX : 217.373.8923

NOTE: DIMENSIONAL DATA IS NOT TO BE OBTAINED BY SCALING ANY PORTION OF THIS DRAWING.

DESIGNED BY: SMM PROJECT NO: 102230  
 DRAWN BY: MEW/SJD DATE: 06/2028  
 CHECKED BY: SLD  
 APPROVED BY: SMM  
 ACTIVITY INITIALS

DRAWING NUMBER  
**S-20**