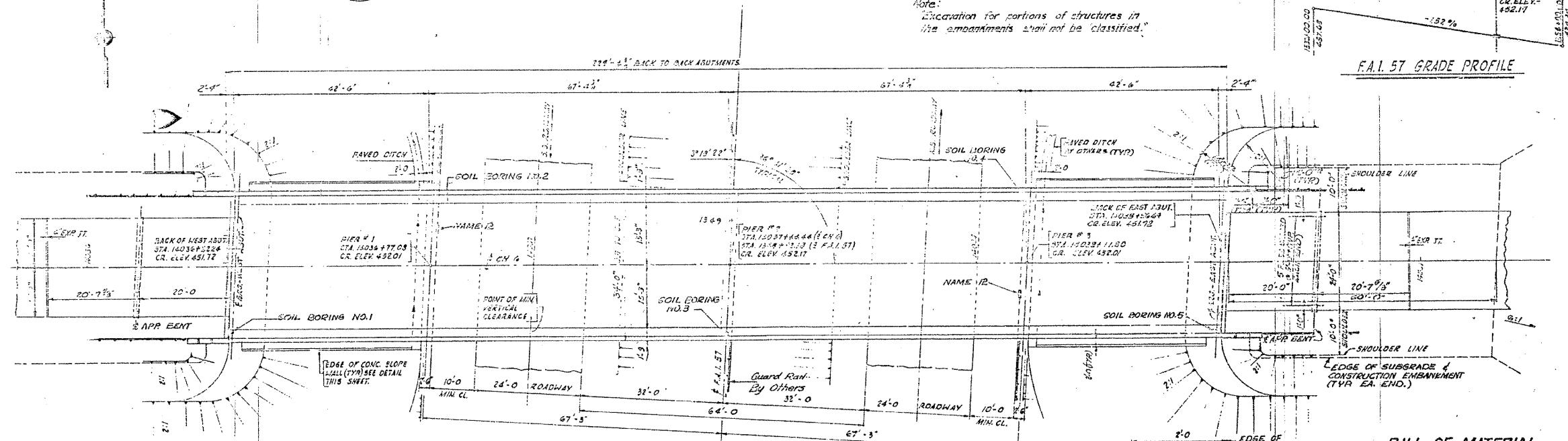
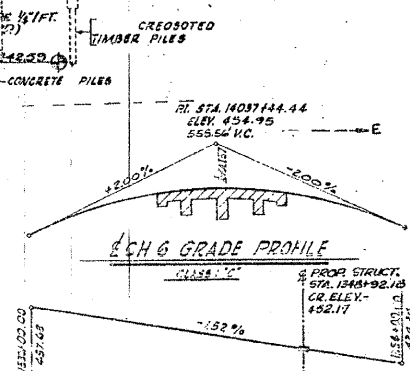
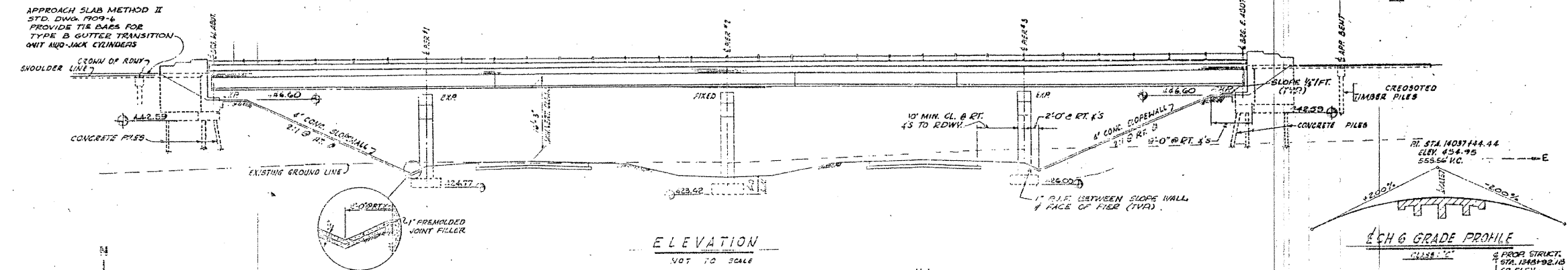


F.A.I. RTE.	SECTION	COUNTY	TOTAL SHEETS	SHEET NO.
57		WILL	303	183
STA.		TO STA.		
FED. ROAD DIST. NO.		ILLINOIS	FED. AID PROJECT	
*99182) R-389-HB-1-BR-2		CONTRACT: 62253		

ROUTE NO.	SEC.	COUNTY	TOTAL SHEETS	SHEET NO.
F.A.I. 57	99-1	WILL	37	7
STA. 1348+92.18				
FED. ROAD DIST. NO. 7		ILLINOIS	FED. AID PROJECT	
SHEET NO. 2 OF 12 SHEETS				

BENCH MARK DATA
 104 R.R. 5th. IN BASE RA 12' LT. STA. 14035+36
 ELEV. 429.759

STATE OF ILLINOIS
 DEPARTMENT OF PUBLIC WORKS & BUILDINGS
 DIVISION OF HIGHWAYS



APPROACH SLAB PILING
 TYPE - CREOSOTED TIMBER

TOTAL NO. REQ'D: 10
 REQUIRED LENGTH: 19' W. Abut.
 14' E. Abut.
 SEE SPECIAL PROVISIONS

BILL OF MATERIAL

ITEM	UNIT	QUANTITY
SLOPE WALL	SQ. YD.	45.0
CREOSOTED PILES	LIN. FT.	165

DESIGNED	EXAMINED
CHECKED	PASSED
DRAWN D.H.	APPROVED
CHECKED L.J.L.	

ILLINOIS DIVISION OF HIGHWAYS
 GENERAL PLAN AND ELEVATION
 F.A.I. ROUTE 57 SEC. 99-1-HB-1
 WILL COUNTY
 STA. 1348+92.18

REVISIONS: 1. Rev. 2/10/67 Streamlined wing walls, added curbs, changed abutments from 22'-4 1/2" to 22'-4 1/4" R.M.L.

FOR INFORMATION ONLY