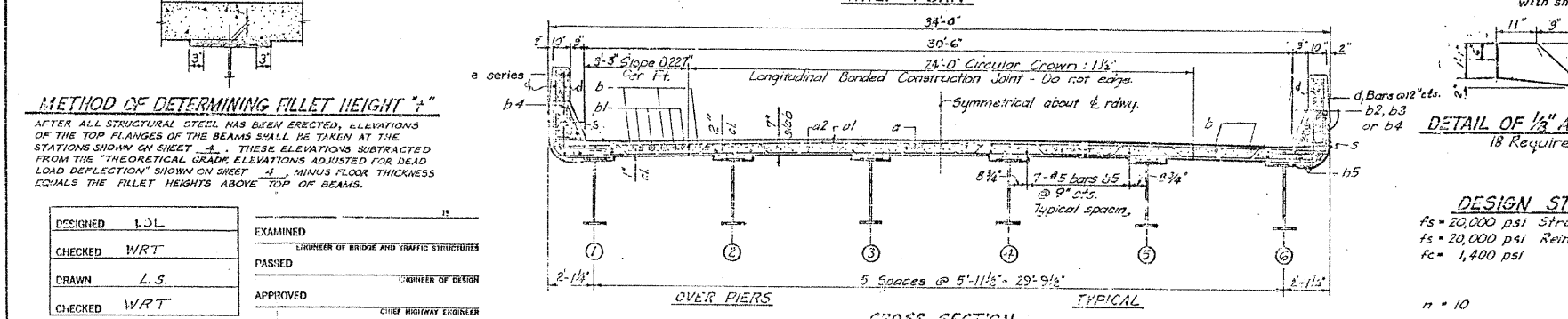
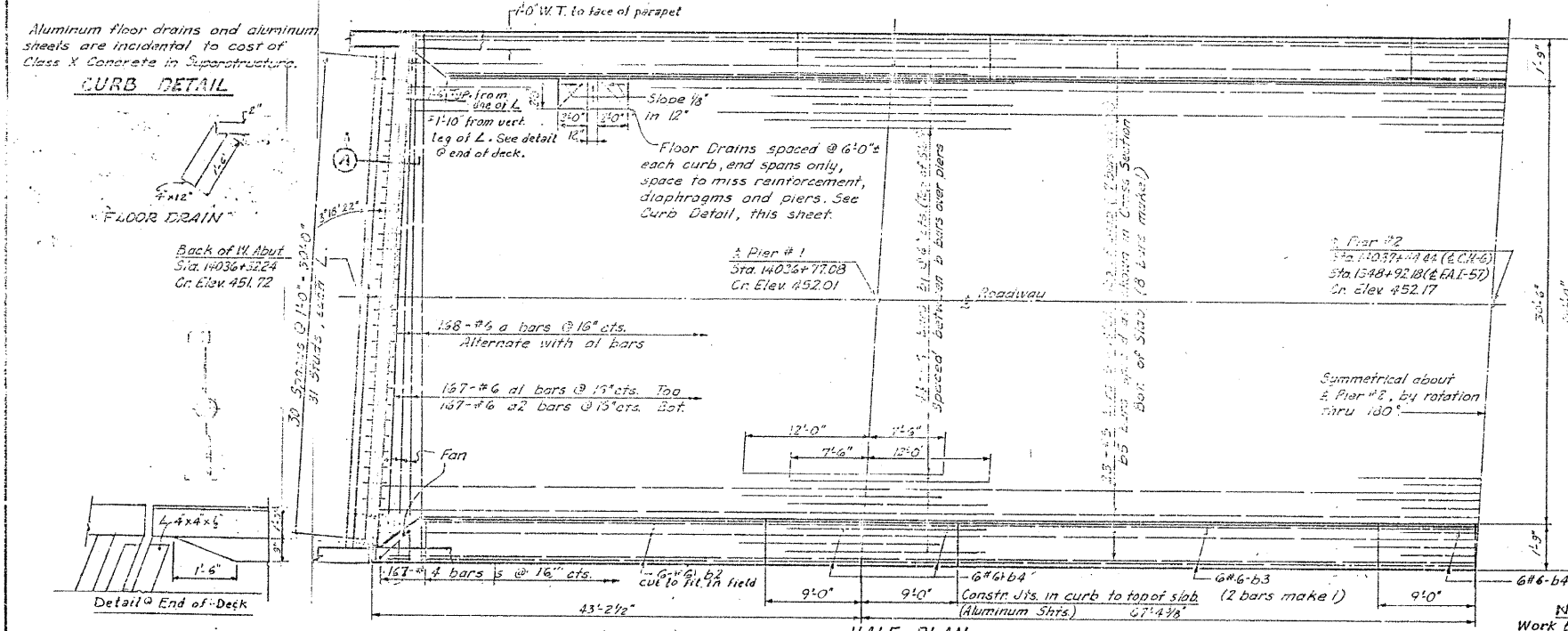
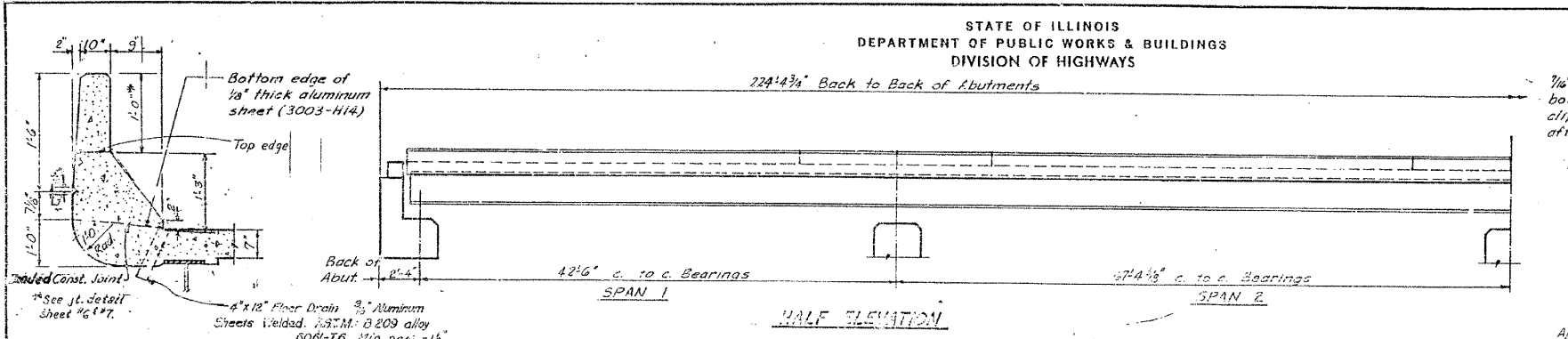


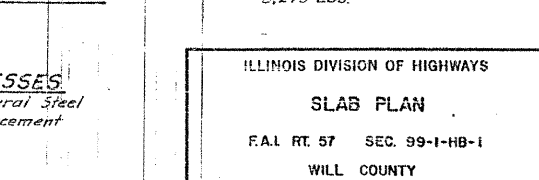
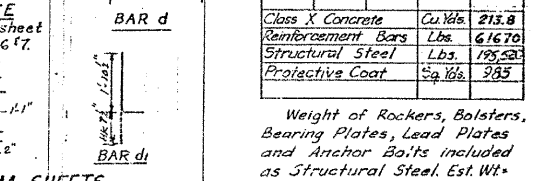
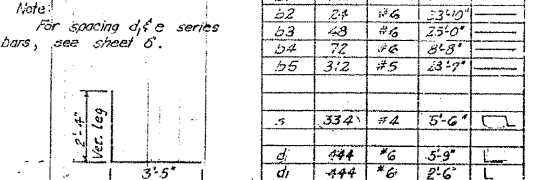
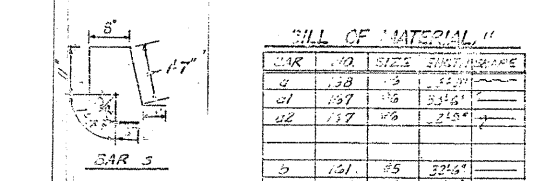
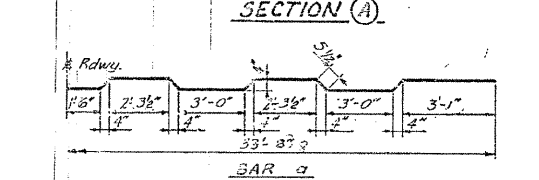
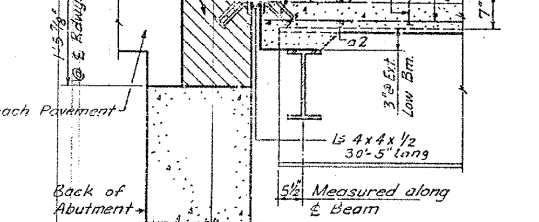
F.A.I. RTE.	SECTION	COUNTY	TOTAL SHEETS	SHEET NO.
57		WILL	303	184
STA.	TO STA.			
FED. ROAD DIST. NO.	ILLINOIS	FED. AID PROJECT		
991821 R-389-1HB-1-BR-2	CONTRACT: 62253			

STATE OF ILLINOIS
DEPARTMENT OF PUBLIC WORKS & BUILDINGS
DIVISION OF HIGHWAYS

SHEET NO. 3
12 SHEETS



1/4" holes @ 12" cts. for 3/8" bolts. All bolts shall be burned, sawed or clipped flush with back of angles after forms are removed.
Shaded area to be poured after superstructure false-work has been removed. 1 1/2" quantity of Class X Concrete @ 50' included with Superstr.



BILL OF MATERIAL

NO.	QTY.	SIZE	UNIT	AMOUNT
a	158	#5	23'4"	
a1	197	#5	23'4"	
a2	157	#5	23'4"	
b	151	#5	23'4"	
b1	132	#6	17'4"	
b2	84	#6	23'4"	
b3	49	#6	23'4"	
b4	72	#6	23'4"	
b5	312	#5	23'4"	
c	334	#4	5'-6"	
d	444	#6	5'-9"	
d1	444	#6	2'-6"	
Class X Concrete		Cu Yds.	213.8	
Reinforcement Bars		Lbs.	61670	
Structural Steel		Lbs.	195,500	
Protective Coat		Sq Yds.	985	

Weight of Rockers, Bolsters, Bearing Plates, Lead Plates and Anchor Bolts included as Structural Steel. Est. Wt. 8,273 Lbs.

METHOD OF DETERMINING FILLET HEIGHT "f"
AFTER ALL STRUCTURAL STEEL HAS BEEN ERECTED, ELEVATIONS OF THE TOP FLANGES OF THE BEAMS SHALL BE TAKEN AT THE STATIONS SHOWN ON SHEET 2. THESE ELEVATIONS SUBTRACTED FROM THE "THEORETICAL GRADE ELEVATIONS ADJUSTED FOR DEAD LOAD DEFLECTION" SHOWN ON SHEET 1, MINUS FLOOR THICKNESS EQUALS THE FILLET HEIGHTS ABOVE TOP OF BEAMS.

DESIGNED	L. J. L.	EXAMINED	
CHECKED	W. R. T.	PASSED	
DRAWN	L. S.	APPROVED	
CHECKED	W. R. T.		

DESIGN STRESSES
fs = 20,000 psi Structural Steel
fs = 20,000 psi Reinforcement
fc = 1,400 psi
n = 10

Rev. 11-12-65 Quantity Changes: Class X Conc. 219 to 226 cu yd. Reinf Bars 43,856 to 48,495 lbs. Rev. 12-23-67 Changed top slab form clearance from 1'-8" to 1'-3" and #4 diameter to #5. Reinf Bars 51,400 to 61,670 Class X Conc. from 226.6 to 213.8 cu yds. Struct Steel 184,220 to 195,520 lbs., Prot. Coat 870 to 935 sq yd. 1/2" to 2" Reinf Bars from 48,495 lbs. to 51,400 lbs. 11/16" 7-11-67 11/16" Reinf Bars from 51,400 to 61,670 Class X Conc. from 226.6 to 213.8 cu yds.

FOR INFORMATION ONLY