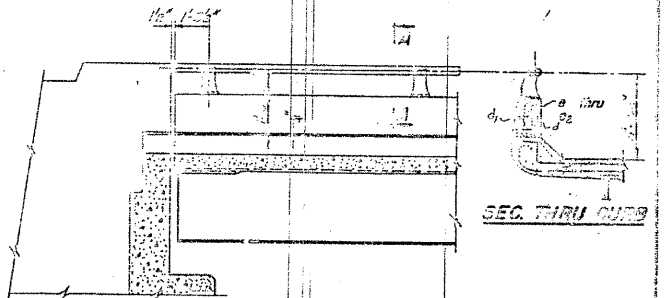
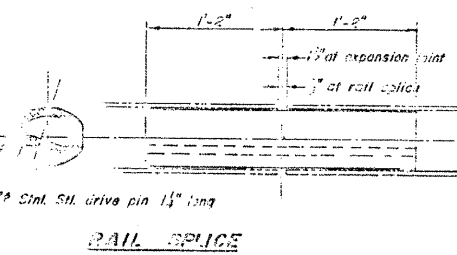
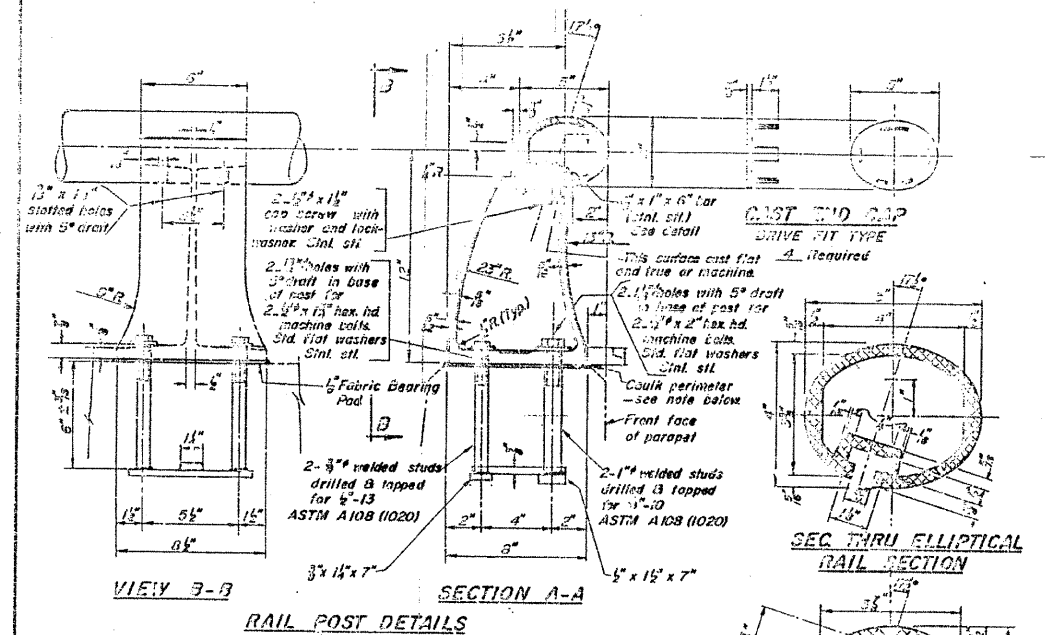
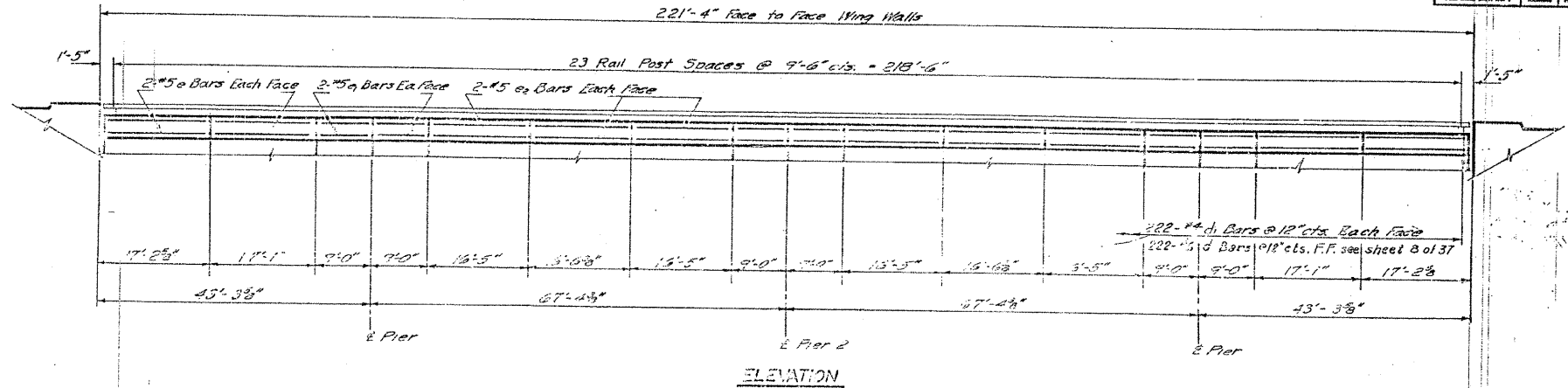


F.A.I. RTE.	SECTION	COUNTY	TOTAL SHEETS	SHEET NO.
57		WILL	303	187
STA.	TO STA.			
FED. ROAD DIST. NO.	ILLINOIS	FED. AID PROJECT		
*990821 R-3&9-1HB-1-BR-2	CONTRACT: G2253			

STATE OF ILLINOIS
DEPARTMENT OF PUBLIC WORKS & BUILDINGS
DIVISION OF HIGHWAYS

DATE	BY	CHKD	APP'D	SHEET NO.
11/18/66	WILL	37	11/18/66	12 SHEETS



NOTES:

All Posts shall be normal to parapet.

All Aluminum Alloy Extruded Rail shall conform to ASTM specification B-221 alloy 6061-T6 and shall be supplied in modular lengths of 30 feet, except at the end of bridge or over span joints in bridge deck where the rail shall be attached to a minimum of 2 posts. If the rail is on a horizontal curve of 2500 foot radius or less, the modular lengths may be reduced but shall be attached to a minimum of 2 posts.

All joints in rail shall be spliced per detail.

See Special Provisions for following Material Specifications:
Cast Aluminum Alloy Bridge Post—Alloy A344-T4
Stainless Steel Bars, Cup Screws, Washers and Lockwashers.
Fabric Bearing Pad.

METHOD OF MEASUREMENT: Aluminum handrail shall be measured in linear feet. The length paid for shall be the over all length along the top longitudinal railing member thru all posts and gaps.

BASIS OF PAYMENT: Aluminum handrail shall be paid for at the contract unit price per linear foot for ALUMINUM HANDRAIL, measured as specified, which price shall be payment in full for all materials, fabrication, transportation, and erection.

Cost of rail splices, end caps, and hardware to be incidental to item ALUMINUM HANDRAIL.

Provide 1-1/2" and 2-1/2" Aluminum Shimms for 25% of the Posts. Rail element shall be parallel to grade—high spots shall be ground, and low spots shimmed.

**PARAPETS & RAILS
BILL OF MATERIAL**

Bar	No.	Size	Length	Shops
a	32	#5	16'-9"	
af	75	#5	8'-9"	
ag	15	#5	16'-3"	
Class X Concrete		Cu. Yds.		X
Reinforcement Bars		Lbs.		X
Aluminum Handrail		Lin. Ft.	442	

* See Sheet 3 of 11
ALUMINUM HANDRAIL

DESIGNED	WILL	19
CHECKED	WILL	
DRAWN	WILL	
CHECKED	WILL	

Notes:

Seal perimeter of base of post to parapet with two component non-staining gray sealing compound with polysulfide liquid polymers—gun grade with primer.

Capice must be a sliding fit in Rail Section

R-17 11-19-66
Revised 11/18/66 This sheet replaces railing details of Sheet G dated 11/26/64.

FOR INFORMATION ONLY