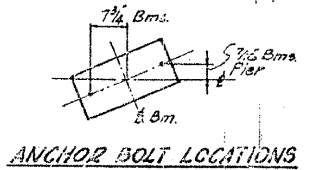
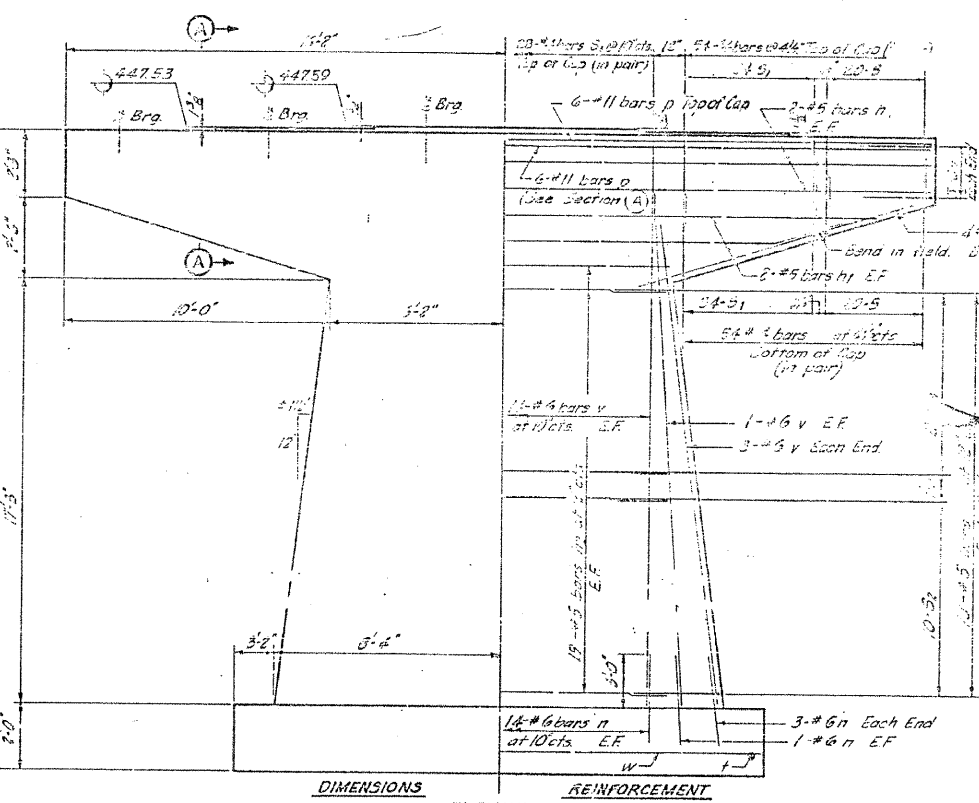
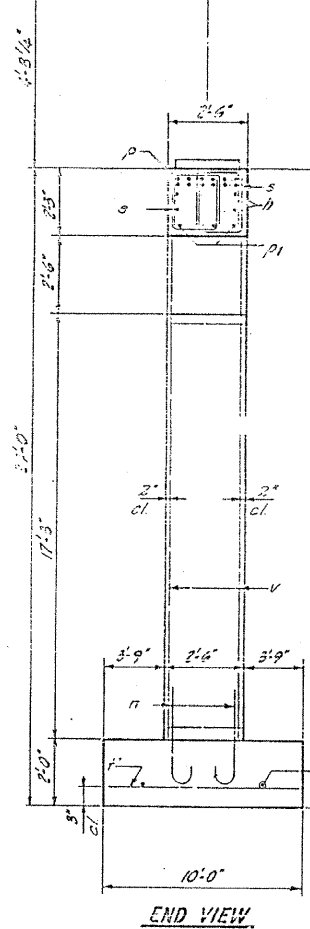
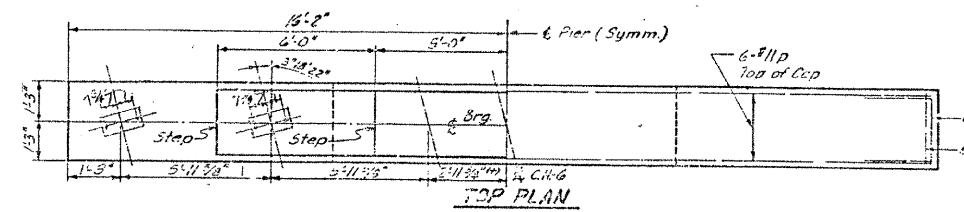


STATE OF ILLINOIS
DEPARTMENT OF PUBLIC WORKS & BUILDINGS
DIVISION OF HIGHWAYS



Sta 140374+4.44
C- Elev. 452.17

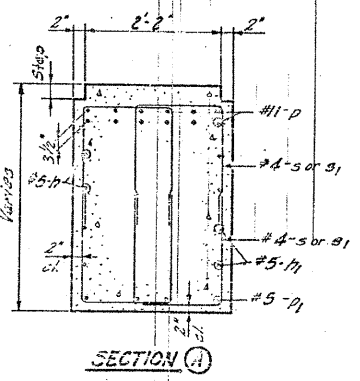
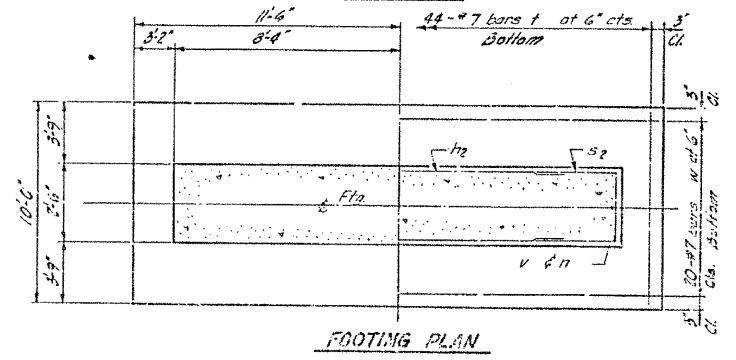
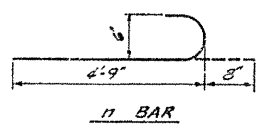
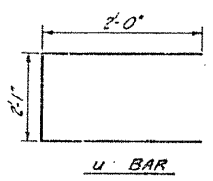


Note: All edges shall have standard 3' chamfers except footings.

16'3" DIMENSIONS

BAR	NO.	SIZE	LENGTH	SHAPE
s	1	#5	17'-0"	□
s1	1	#5	12'-0"	□
s2	1	#5	12'-0"	□
s3	1	#5	12'-0"	□

3 BARS



**PIER 2
BILL OF MATERIAL**

BAR	NO.	SIZE	LENGTH	SHAPE
s	1	#5	17'-0"	□
s1	1	#5	12'-0"	□
s2	1	#5	12'-0"	□
s3	1	#5	12'-0"	□
t	44	#7	9'-6"	—
u	3	#6	6'-1"	□
v	38	#6	21'-0"	—
w	20	#7	22'-6"	—
Class X Concrete		Cu Yds.	52.4	
Reinforcement Bars		Lbs.	7,522	

DESIGNED	WLR	EXAMINED	
CHECKED	D.H.	ENGINEER OF BRIDGE AND TRAFFIC STRUCTURES	
DRAWN	D.H.	PASSED	
CHECKED	WRT	ENGINEER OF DESIGN	
		APPROVED	
		CHIEF HIGHWAY ENGINEER	

ILLINOIS DIVISION OF HIGHWAYS
PIER NO. 2
F.A.I. RT. 57 SEC. 99-1-HB-1
WILL COUNTY
STA. 1348+92.18

FOR INFORMATION ONLY