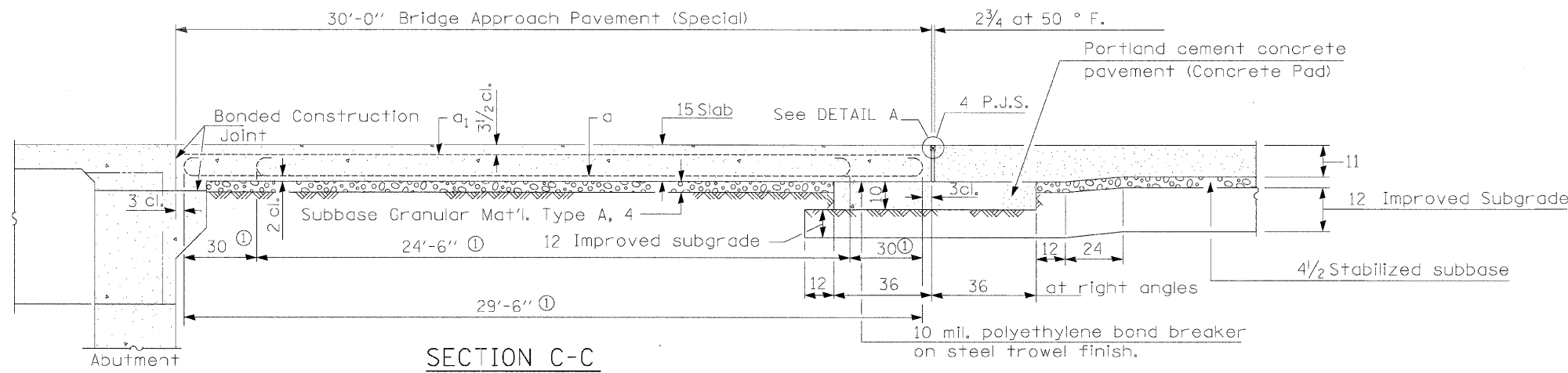
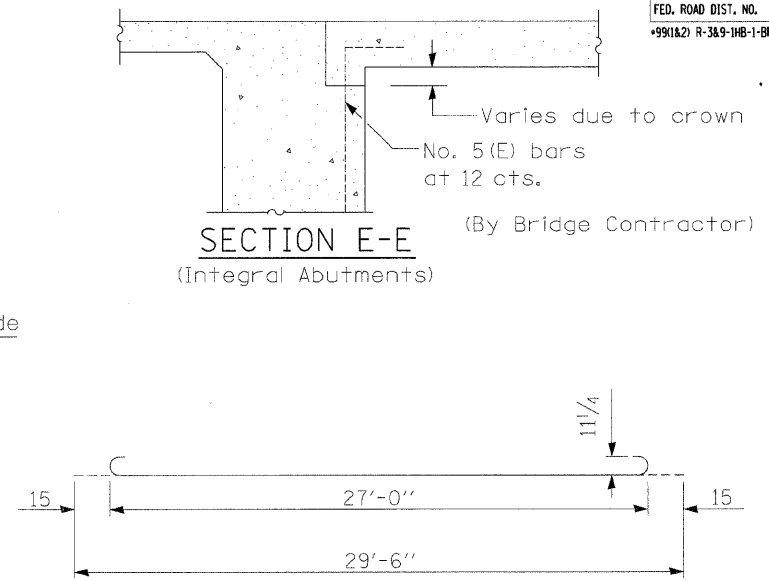


F.A.I. RTE.	SECTION	COUNTY	TOTAL SHEETS	SHEET NO.
57	•	WILL	303	202
STA.	TO STA.			
FED. ROAD DIST. NO.	ILLINOIS	FED. AID PROJECT		
•991&2 R-3&9-1B-1-BR-2		CONTRACT: 62253		



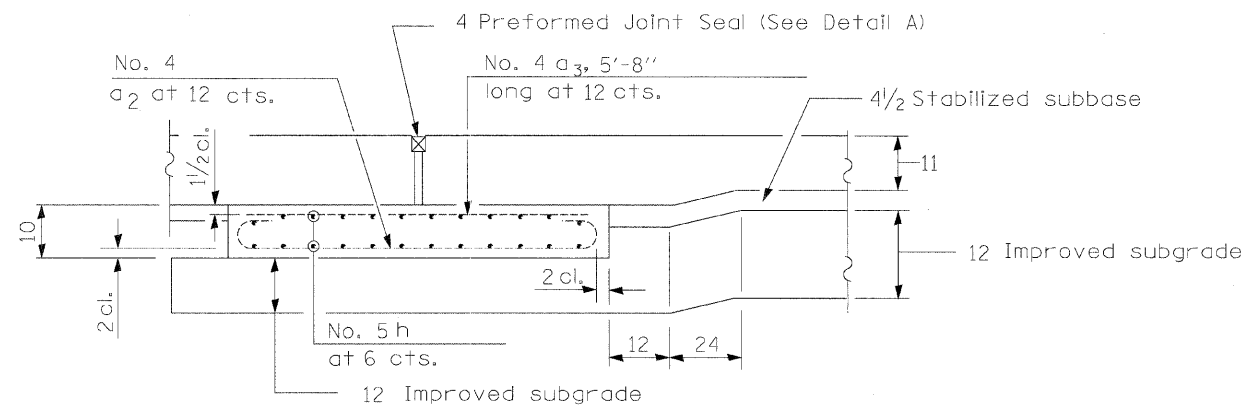
SECTION C-C

① Stagger No. 9 a bars as shown on plan - full width



SECTION E-E  
(Integral Abutments)

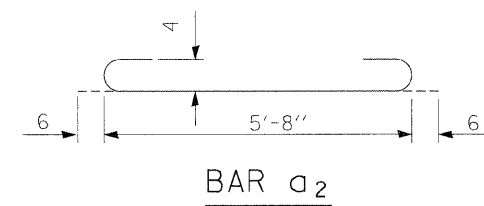
BAR a



SECTION D-D  
(Showing reinforcement)

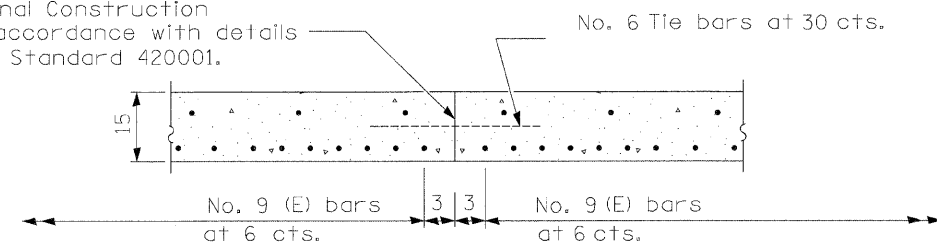
DESIGN STRESSES

$f_y = 60,000$  p.s.i.  
 $f'_c = 3,500$  p.s.i.  
 $n = 8.5$



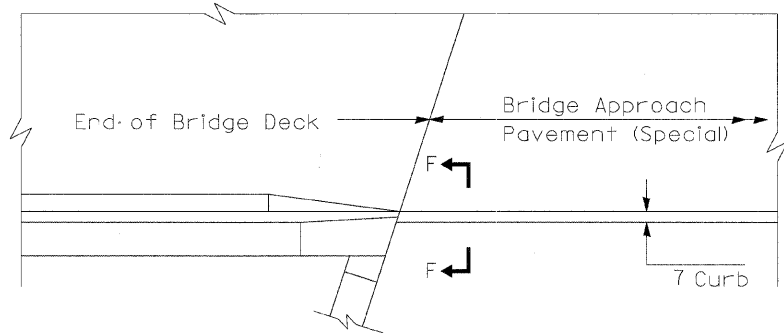
BAR a2

Longitudinal Construction Joint in accordance with details shown on Standard 420001.

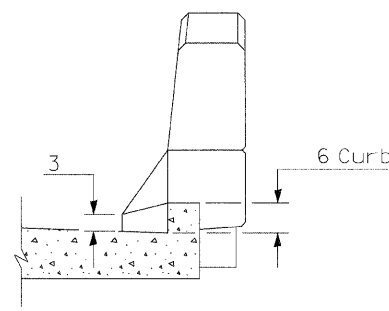


OPTIONAL LONGITUDINAL  
CONSTRUCTION JOINT

As approved by the Engineer, the Contractor may elect to reduce the widths of pour by use of the Optional Longitudinal Construction Joint shown. Joints shall be located at the edge of a traffic lane.



PARAPET TO CURB TRANSITION  
INTEGRAL ABUTMENT



SECTION F-F

All dimensions are in inches unless otherwise shown.

**Clark Dietz**  
ENGINEERS

DESIGN FIRM REGISTRATION  
No. 184-000450  
118 SOUTH CLINTON STREET  
SUITE 600  
CHICAGO, IL 60661  
PHONE: 312.648.9900  
FAX: 312.648.0204

REVISIONS	
NAME	DATE

ILLINOIS DEPARTMENT OF TRANSPORTATION  
1-57 AT MANHATTAN - MONEE ROAD

CONSTRUCTION DETAILS  
BRIDGE APPROACH PAVEMENT (SPECIAL) DETAIL  
3 OF 4

SCALE: VERT. N.T.S.  
DATE 9/19/2008

DRAWN BY AJP  
CHECKED BY BDC

C:\p\022231\plans\sheets\022231pscd0103.dgn  
 8/1/2008