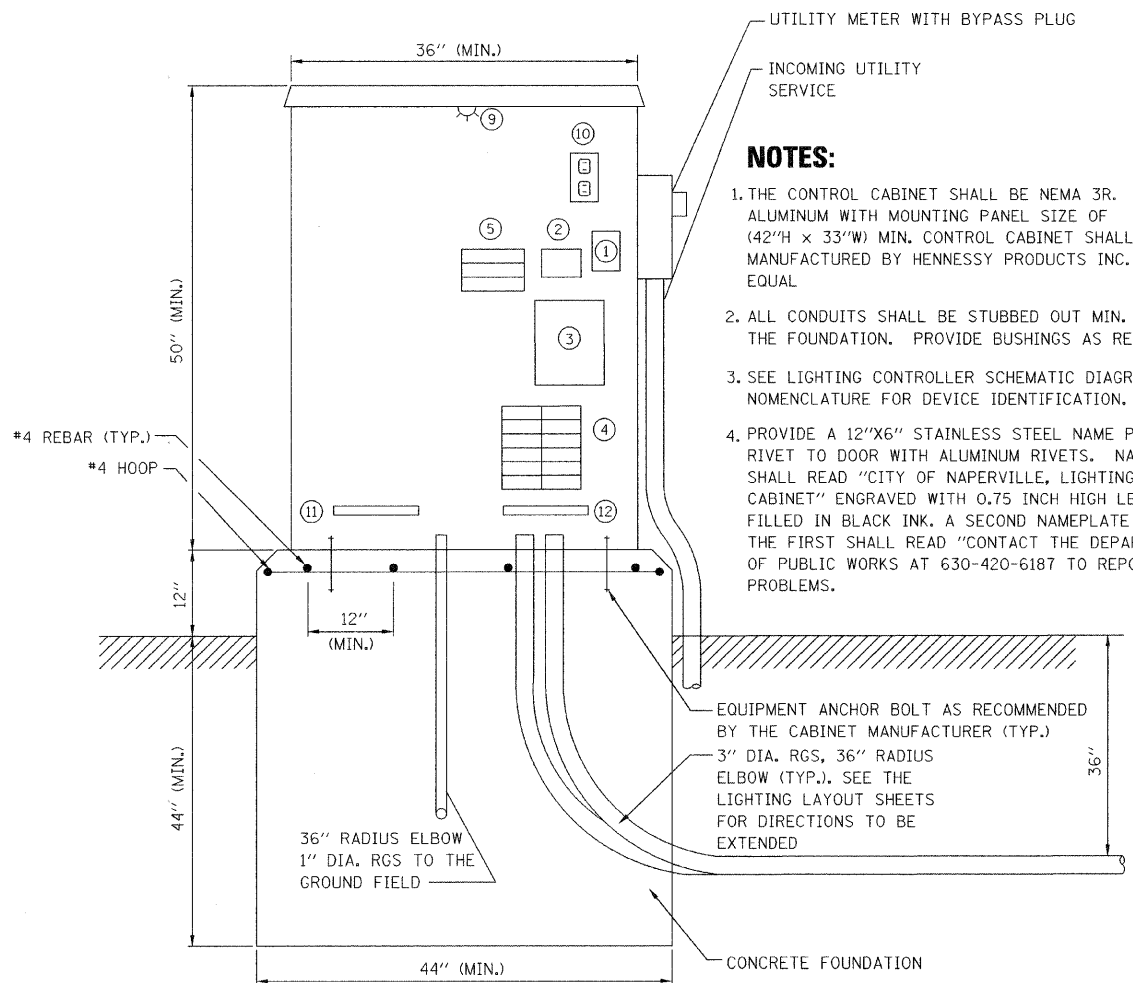


F.A.U. RTE.	SECTION	COUNTY	TOTAL SHEETS	SHEET NO.
2552	00-00114-00-PV	DuPAGE	563	222
STA.	TO STA.			
FED. ROAD DIST. NO.	ILLINOIS	FED. AID PROJECT		

**NOMENCLATURE**

- ① 10000 AMP SURGE ARRESTOR (ELETRONIC GUARD, EG 240 RC BY INTERMATIC).
- ② 100AMP, 2 POLE MAIN CIRCUIT BREAKER, 240V, 22KAIC (TYPE "TEB" BY GENERAL ELECTRIC OR TYPE "FAL" BY SQUARE D).
- ③ 100AMP, 2 POLE, SINGLE THROW, ELECTRICALLY OPERATED, MECHANICALLY HELD CONTACTOR (GENERAL ELECTRIC OR SQUARE D).
- ④ FIVE 20AMP, 1 POLE CIRCUIT BREAKERS, 250 (TYPE "TEB" BY GENERAL ELECTRIC OR TYPE "FAL" BY SQUARE D).
- ⑤ 15AMP, 1 POLE CIRCUIT BREAKER, 120V (TYPE "TEB" BY GENERAL ELECTRIC OR EQUAL).
- ⑥ NOT USED
- ⑦ NOT USED
- ⑧ NOT USED
- ⑨ WATER PROOF INCANDESENT LIGHTING FIXTURE WITH 120V, 60 WATT BULB.
- ⑩ 15AMP, 120V. DUPLEX GFCI OUTLET.
- ⑪ 1" X 12" NEUTRAL STRIP LABELED "NEUTRAL" AND JOINED TO THE GROUND STRIP WITH A BONDING JUMPER.
- ⑫ 1" X 12" GROUND STRIP LABELED "GROUND", AND PAINTED GREEN.
- ⑬ LIMIT SWITCH FOR CABINET LIGHT FIXTURE.

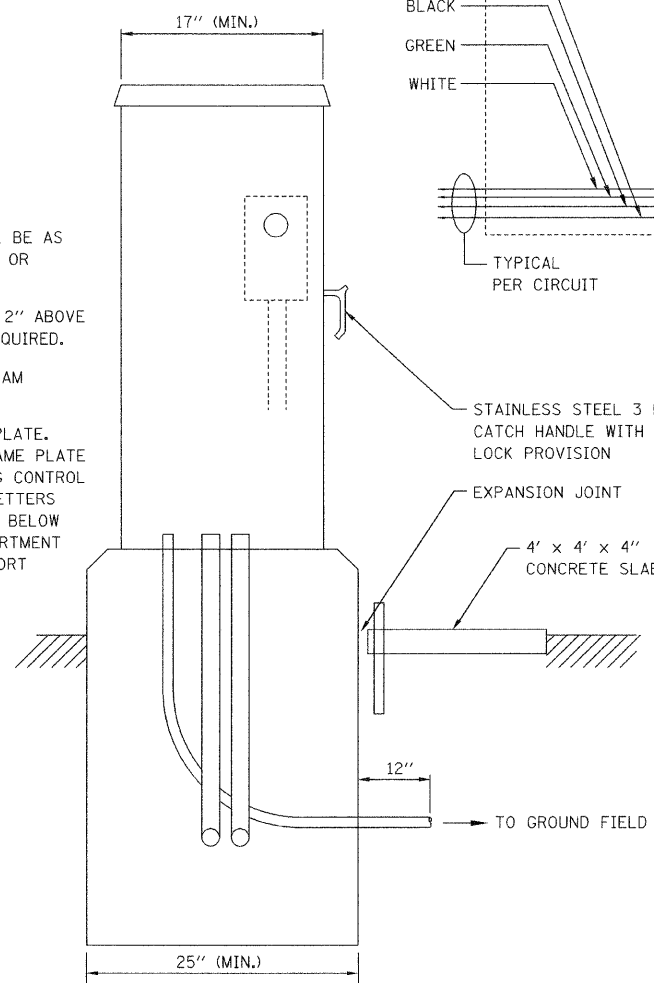


**FRONT ELEVATION**

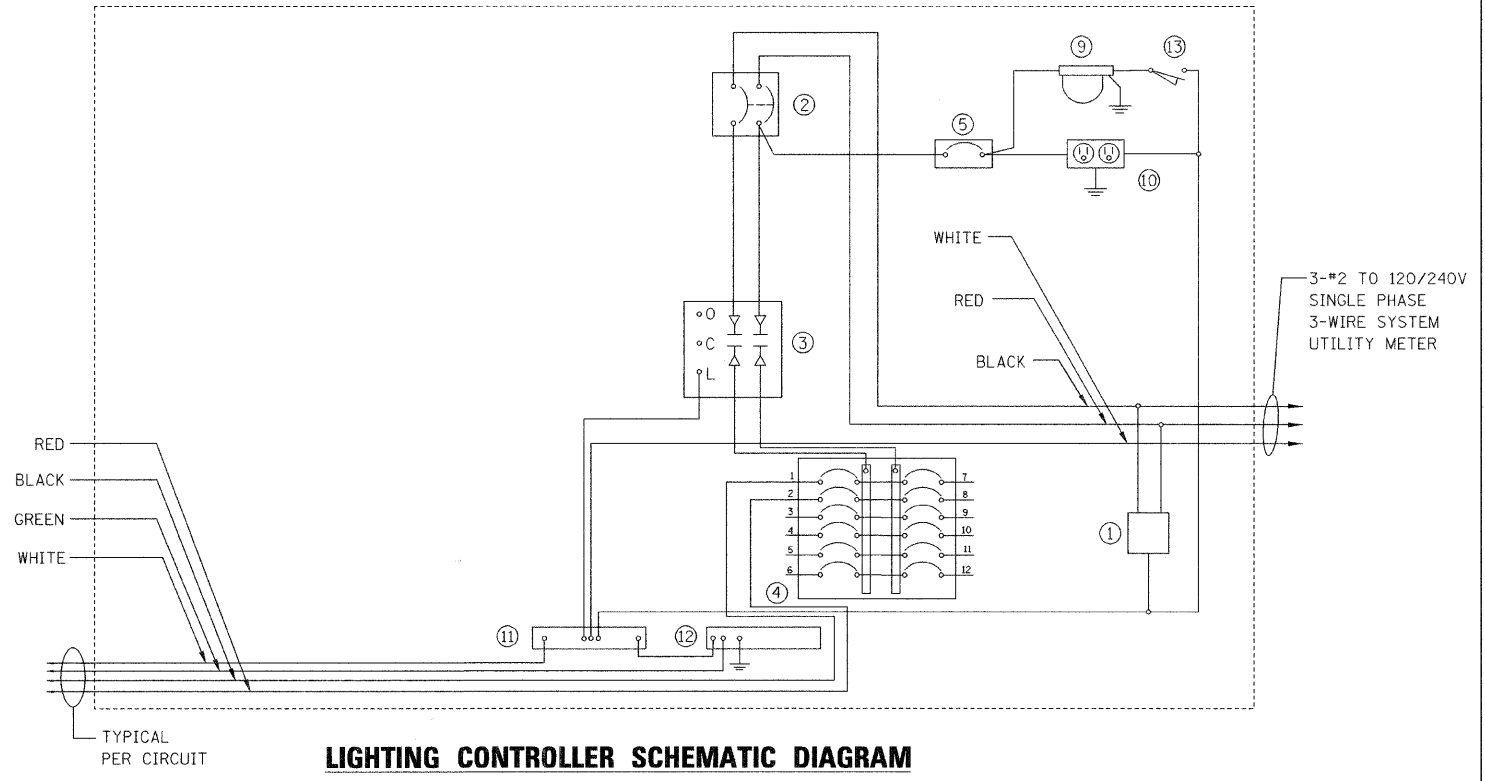
**LIGHTING CONTROL CABINET AND FOUNDATION DETAIL**

**NOTES:**

1. THE CONTROL CABINET SHALL BE NEMA 3R, ALUMINUM WITH MOUNTING PANEL SIZE OF (42"H x 33"W) MIN. CONTROL CABINET SHALL BE AS MANUFACTURED BY HENNESSY PRODUCTS INC. OR EQUAL.
2. ALL CONDUITS SHALL BE STUBBED OUT MIN. 2" ABOVE THE FOUNDATION. PROVIDE BUSHINGS AS REQUIRED.
3. SEE LIGHTING CONTROLLER SCHEMATIC DIAGRAM NOMENCLATURE FOR DEVICE IDENTIFICATION.
4. PROVIDE A 12"x6" STAINLESS STEEL NAME PLATE. RIVET TO DOOR WITH ALUMINUM RIVETS. NAME PLATE SHALL READ "CITY OF NAPERVILLE, LIGHTING CONTROL CABINET" ENGRAVED WITH 0.75 INCH HIGH LETTERS FILLED IN BLACK INK. A SECOND NAMEPLATE BELOW THE FIRST SHALL READ "CONTACT THE DEPARTMENT OF PUBLIC WORKS AT 630-420-6187 TO REPORT PROBLEMS."



**LEFT SIDE ELEVATION**




**LIGHTING CONTROLLER SCHEMATIC DIAGRAM**

REVISIONS	
NAME	DATE
ADDENDUM 1 - NEW SHEET	8/28/08

INTERSECTION IMPROVEMENT  
 WASHINGTON STREET - 75th STREET  
 ELECTRICAL DETAILS  
 SHEET 1 OF 4

CONSULTANT  
**TYLIN INTERNATIONAL**

City of  **Naperville**

DRAWN: JRH  
 CHECKED: FO  
 APPROVED: DEM  
 DATE: 04/11/08  
 SCALE:  
 JOB NO.: P-91-494-00  
 PROJECT NO.: CMM-7003 (983)

