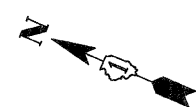
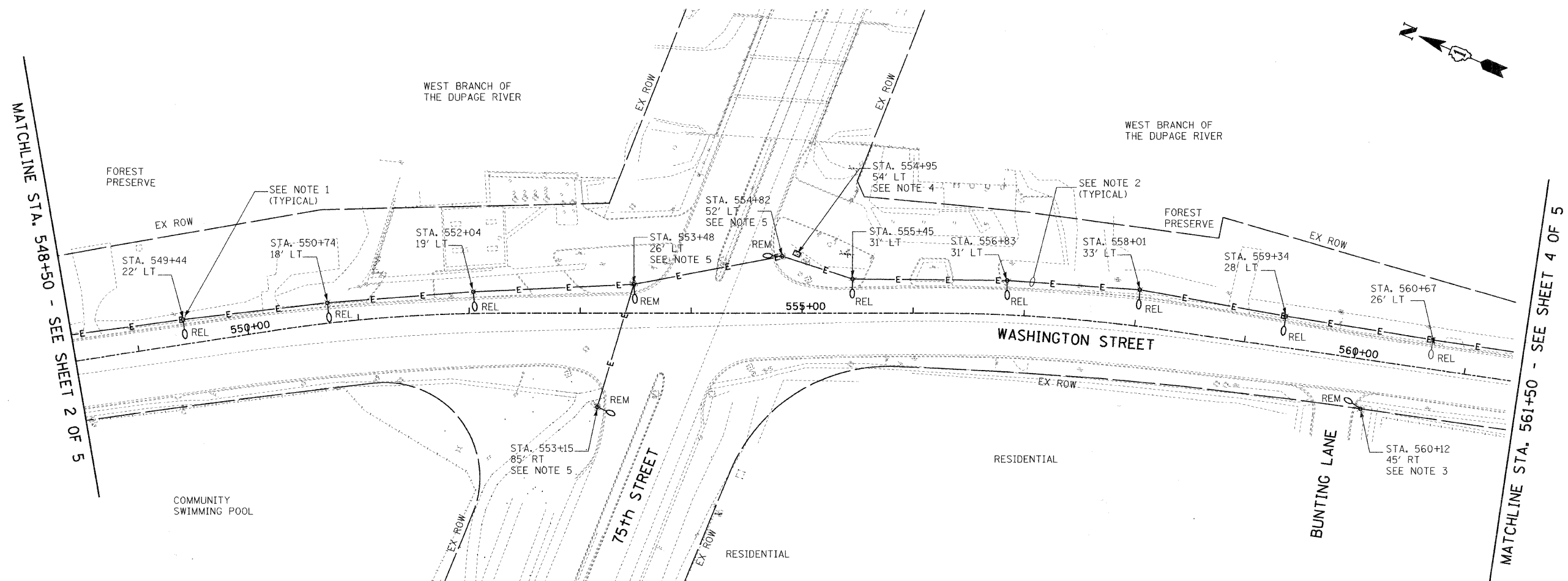


F.A.U. RTE.	SECTION	COUNTY	TOTAL SHEETS	SHEET NO.
2552	00-00114-00-PV	DuPAGE	563	239
STA.		TO STA.		
FED. ROAD DIST. NO.	ILLINOIS	FED. AID PROJECT		




NOTES:

- DISCONNECT AND RELOCATE EXISTING LIGHT POLE AND ASSOCIATED LUMINAIRE PER DEMOLITION WORK REQUIREMENT. EXISTING LIGHT POLE AND LUMINAIRE SHALL BE REUSED FOR NEW WORK IN NEW LOCATION. CLEAN AND REPAIR EXISTING LUMINAIRE AND POLE. PROVIDE NEW PARTS OR LUMINAIRE AS REQUIRED.
- DISCONNECT AND REMOVE EXISTING WIRES AS INDICATED ON THE PLAN.
- DISCONNECT AND REMOVE EXISTING STEEL LIGHT POLE AND ASSOCIATED 250W HPS LUMINAIRE AND TURN OVER TO OWNER. SEE PROPOSED ELECTRICAL PLAN, SHEET 1 OF 7 FOR NEW WORK.
- DISCONNECT AND REMOVE EXISTING CONTROLLER WITH ASSOCIATED FOUNDATION, CONDUIT AND WIRES. COORDINATE EXACT REQUIREMENTS WITH CITY OF NAPERVILLE.
- COORDINATE EXACT REQUIREMENTS WITH CITY OF NAPERVILLE FOR COMBINATION POLES DEMOLITION WORKS.

REVISIONS	
NAME	DATE
ADDENDUM 1 - NEW SHEET	8/28/08

INTERSECTION IMPROVEMENT
 WASHINGTON STREET - 75th STREET
 ELECTRICAL DEMOLITION PLAN
 WASHINGTON STREET
 SHEET 3 OF 5
 STA. 548+50 TO STA. 561+50

CONSULTANT
TYLIN INTERNATIONAL

City of  **Naperville**

DRAWN: JRH
 CHECKED: FO
 APPROVED: DEM
 DATE: 04/11/08
 SCALE: 1"=50'-0"
 JOB NO.: P-91-494-00

SHEET NO.
 PROJECT NO.: CMM-7003 (983)



MATCHLINE STA. 548+50 - SEE SHEET 2 OF 5

MATCHLINE STA. 561+50 - SEE SHEET 4 OF 5