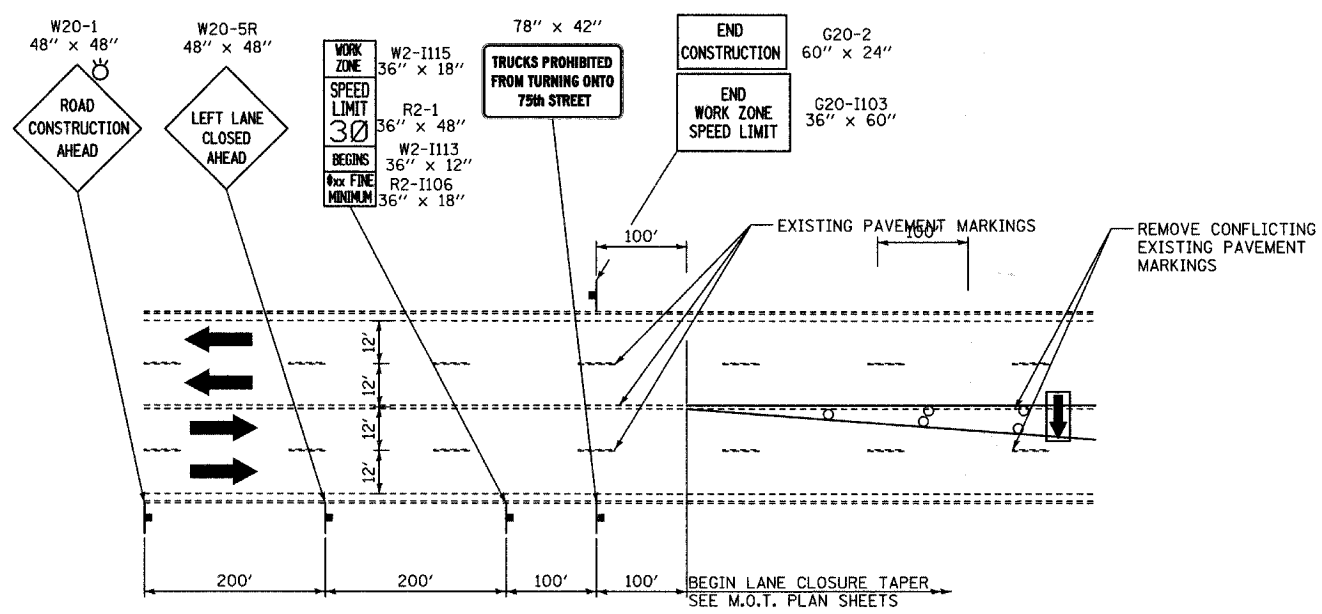


DETAIL 1: TYPICAL MULTI-LANE CLOSURE ALONG N. AND S. WASHINGTON STREET



DETAIL 2: TYPICAL ADVANCED SIGNING FOR MULTI-LANE CLOSURE ALONG N. AND S. WASHINGTON STREET

LEGEND:

- CONSTRUCTION ZONE
- TRAFFIC MOVEMENT
- TEMPORARY SIGN
- DRUMS W/ MONO-DIRECTIONAL STEADY BURNING LIGHT
- ARROW BOARD
- TYPE III BARRICADE W/2 FLASHING BIDIRECTIONAL LIGHTS

REVISIONS	
NAME	DATE

INTERSECTION IMPROVEMENT
WASHINGTON STREET - 75th STREET
MAINTENANCE OF TRAFFIC
ADVANCED SIGNING AND
LANE CLOSURE DETAILS
SHEET 1 OF 3

CONSULTANT
TYLIN INTERNATIONAL

City of **Naperville**

DRAWN	SHEET NO.
CHECKED	
APPROVED	
DATE: APRIL 11, 2008	
SCALE: NONE	
JOB NO.: P-91-494-00	PROJECT NO.: M-CMM-7003 (985)

4/11/2008 10:26:43 AM