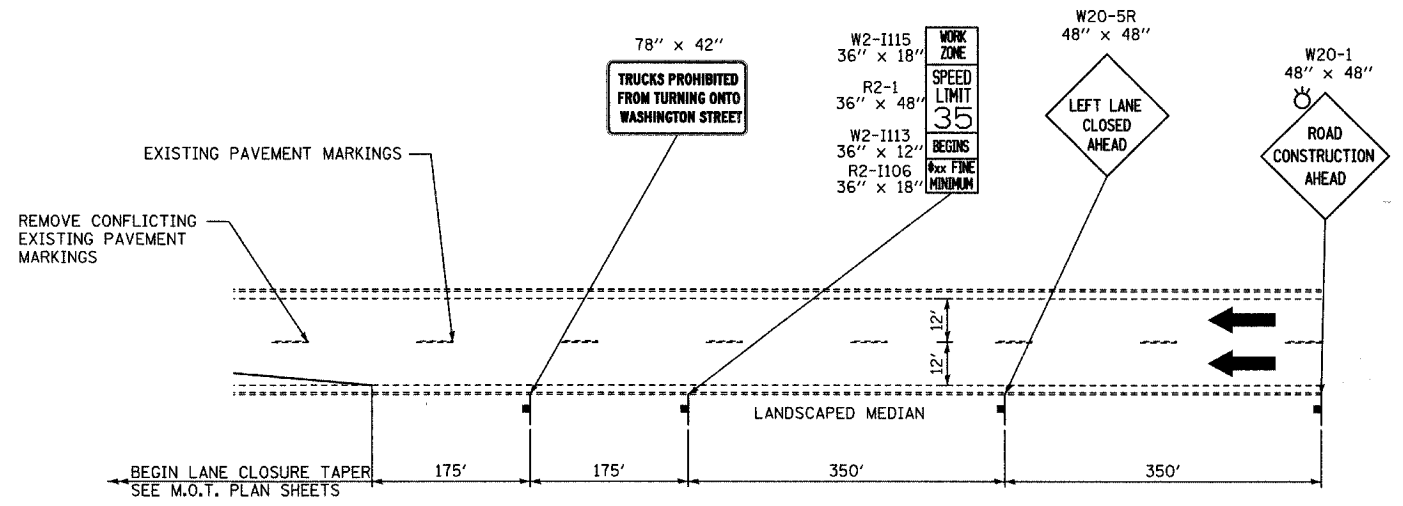
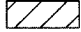







DETAIL 3: TYPICAL MULTI-LANE CLOSURE ALONG E. AND W. 75TH STREET



DETAIL 4: TYPICAL ADVANCE SIGNING FOR MULTI-LANE CLOSURE ALONG E. AND W. 75TH STREET


**LEGEND:**

-  CONSTRUCTION ZONE
-  TRAFFIC MOVEMENT
-  TEMPORARY SIGN
-  DRUMS W/ MONO-DIRECTIONAL STEADY BURNING LIGHT
-  ARROW BOARD
-  TYPE III BARRICADE W/2 FLASHING BIDIRECTIONAL LIGHTS

REVISIONS	
NAME	DATE

INTERSECTION IMPROVEMENT  
 WASHINGTON STREET - 75th STREET  
 MAINTENANCE OF TRAFFIC  
 ADVANCED SIGNING AND  
 LANE CLOSURE DETAILS  
 SHEET 2 OF 3

CONSULTANT  
**TYLIN INTERNATIONAL**

City of  **Naperville**

DRAWN:	SHEET NO.:
CHECKED:	
APPROVED:	
DATE: APRIL 11, 2008	
SCALE: NONE	
JOB NO. P-91-494-00	PROJECT NO. M-CMM-7003 (985)

P:\60241\75th\Drawings\5mtr\5515.dgn 4/11/2008 10:26:44 AM