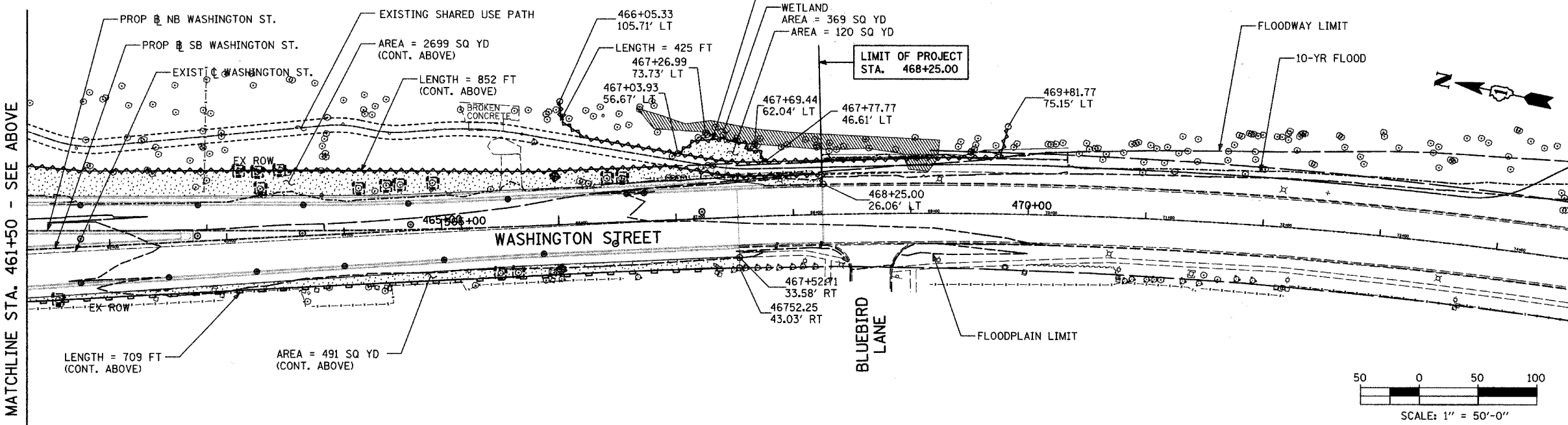
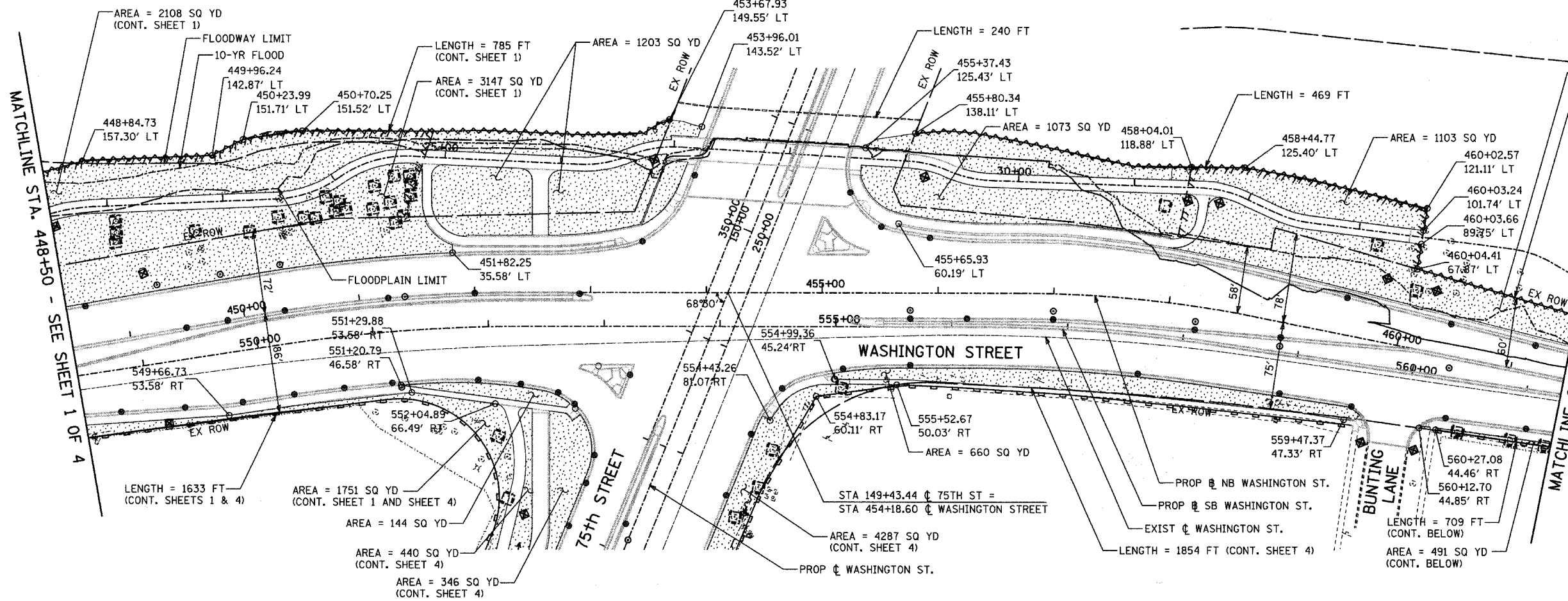
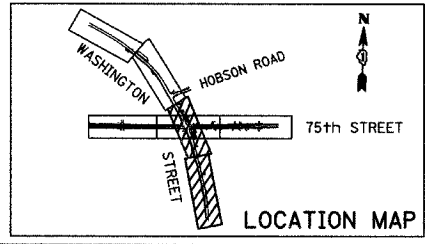
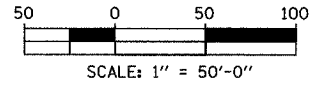


F.A.U. RTE.	SECTION	COUNTY	TOTAL SHEETS	SHEET NO.
2552	00-00114-00-PV	DUPAGE	563	118
STA. 448+50		TO STA. 467+55		
FED. ROAD DIST. NO.	ILLINOIS	FED. AID PROJECT	CONTRACT NO. 63024	



- LEGEND:**
- TEMPORARY EROSION CONTROL SEEDING, WITH EROSION CONTROL BLANKET, EXCELSIOR TYPE
  - SEDIMENT CONTROL, SILT FENCE
  - TEMPORARY DITCH CHECK
  - INLET AND PIPE PROTECTION
  - INLET FILTER, TO BE INSTALLED IN OFF PROJECT DRAINAGE STRUCTURES ACCEPTING STORMWATER RUNOFF
  - EXISTING DRAINAGE SWALE
  - PROPOSED DRAINAGE SWALE (SEE DRAINAGE PLANS)
  - PROPOSED DRAINAGE DITCH (SEE DRAINAGE PLANS)
  - PERIMETER EROSION BARRIER, MODIFIED (DOUBLE ROW)
  - TEMPORARY FENCE (15 FEET PER SIDE = 60 FEET TOTAL) OR AS NOTED
  - SILT CURTAIN



REVISIONS	
NAME	DATE

INTERSECTION IMPROVEMENT  
 WASHINGTON STREET - 75th STREET  
 EROSION CONTROL  
 WASHINGTON STREET  
 SHEET 2 OF 5  
 STA. 448+50 TO STA. 467+55  
 CONSULTANT  
 TYLIN INTERNATIONAL

City of **Naperville**

DRAWN: \_\_\_\_\_ SHEET NO. \_\_\_\_\_  
 CHECKED: \_\_\_\_\_  
 APPROVED: \_\_\_\_\_  
 DATE: APRIL 11, 2008  
 SCALE: \_\_\_\_\_  
 JOB NO.: P-91-494-00 PROJECT NO.: M-CMM-7003 (985)

MATCHLINE STA. 461+50 - SEE ABOVE

MATCHLINE STA. 448+50 - SEE SHEET 1 OF 4

MATCHLINE STA. 461+50 - SEE BELOW

4/11/2008 10:13:41 AM