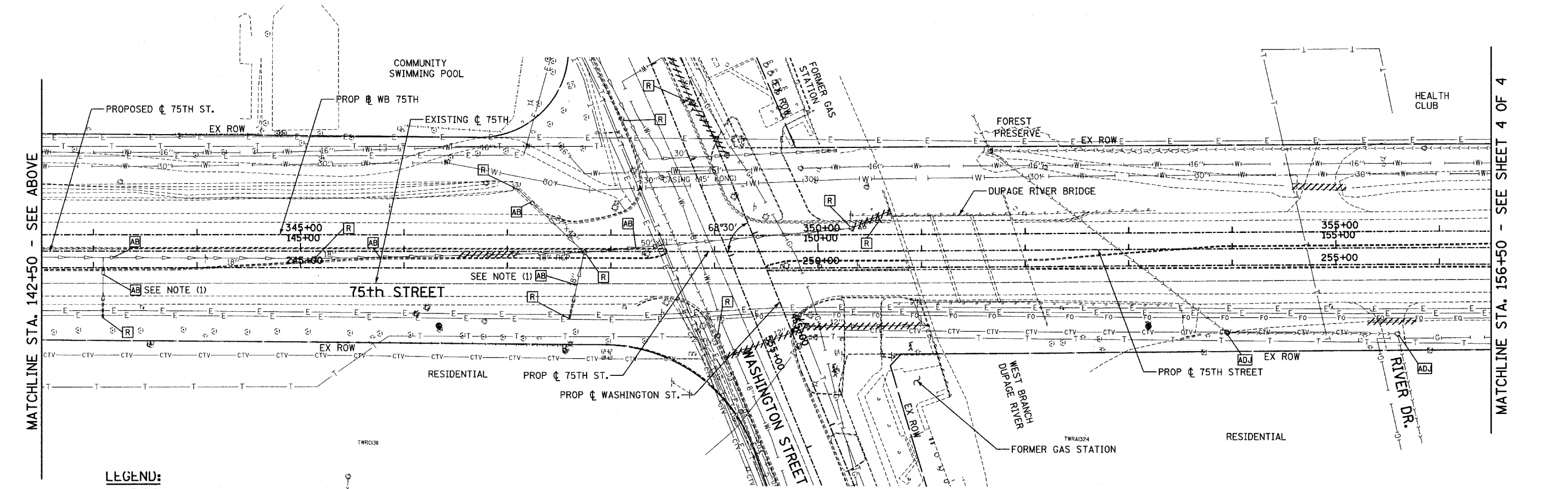
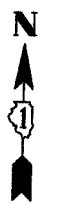


MATCHLINE STA. 142+50 - SEE BELOW



MATCHLINE STA. 142+50 - SEE ABOVE

MATCHLINE STA. 156+50 - SEE SHEET 4 OF 4

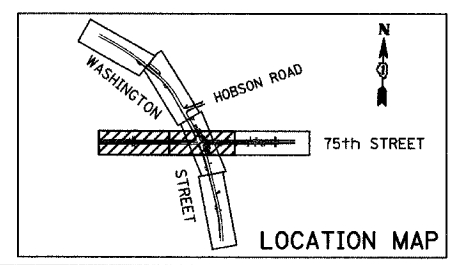
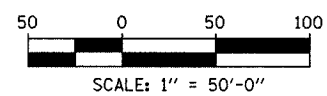


LEGEND:

- P SEWER PLUG
- F.V. FIELD VERIFY
- //// STORM SEWER REMOVAL
- (SY) PROPOSED SANITARY SEWER NUMBER (S=SAN. SEWER, Y=PIPE NO.)
- (SY) PROPOSED STRUCTURE NUMBER (S=SAN. SEWER, Y=STRUCTURE NO.)

NOTES:


1. ABANDONED SEWER TO BE FILLED WITH CONTROLLED LOW STRENGTH MATERIAL. SEE SCHEDULE FOR DETAILS.



| REVISIONS | |
|-----------|------|
| NAME | DATE |
| | |
| | |
| | |
| | |
| | |
| | |

INTERSECTION IMPROVEMENT
 WASHINGTON STREET - 75th STREET
 EXISTING UTILITIES AND
 DRAINAGE REMOVAL PLAN
 75th STREET
 SHEET 3 OF 4
 STA. 128+00 TO STA. 156+50

CONSULTANT
TYLIN INTERNATIONAL

City of  **Naperville**

| | |
|----------------------|------------------------------|
| DRAWN | SHEET NO. |
| CHECKED | |
| APPROVED | |
| DATE: APRIL 11, 2008 | |
| SCALE | |
| JOB NO. P-91-494-00 | PROJECT NO. M-CMM-7003 (985) |