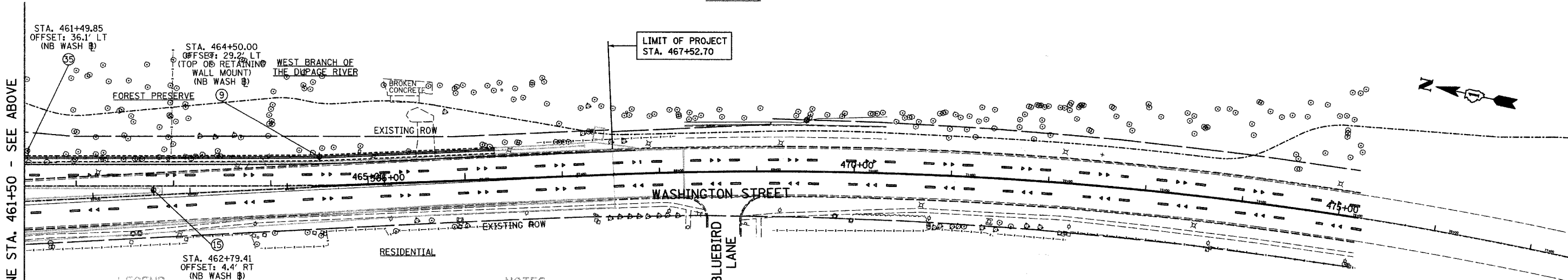
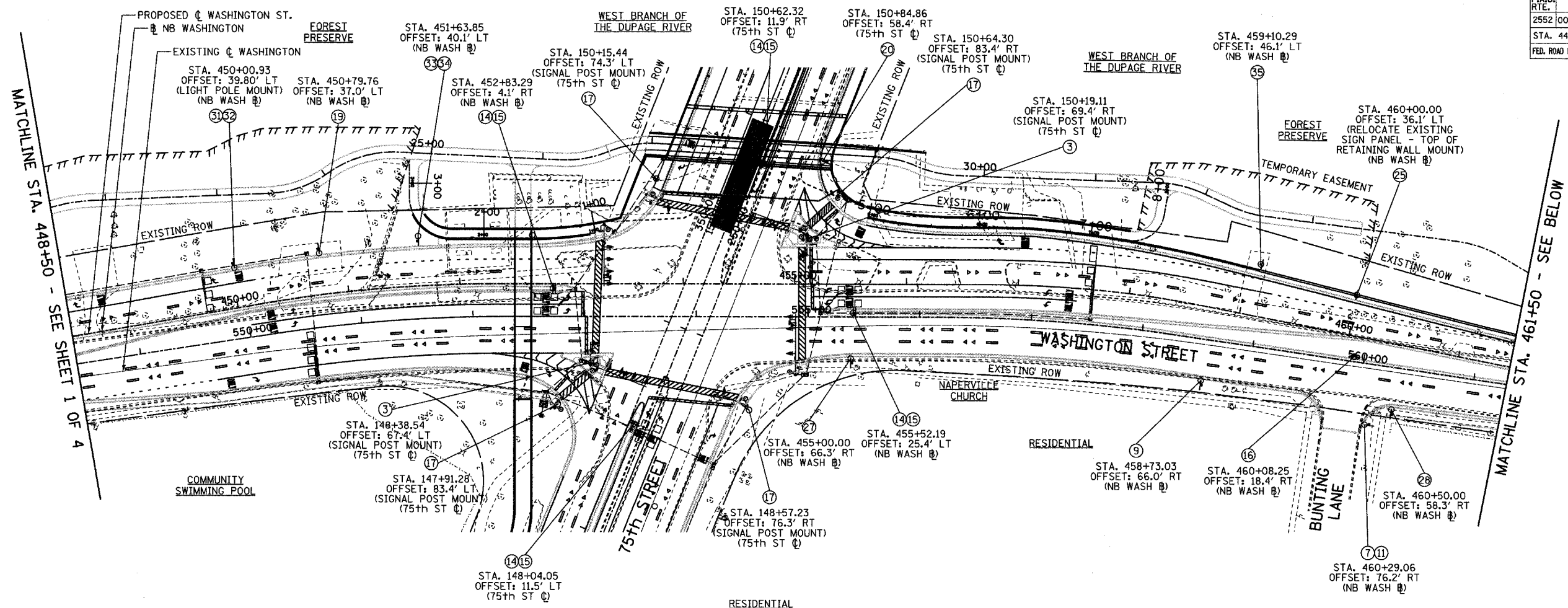


F.A.U. NO.	SECTION	COUNTY	TOTAL SHEETS	SHEET NO.
2552	00-00114-00-PV	DuPAGE	563	183
STA. 448+50		TO STA. 467+55		
FED. ROAD DIST. NO.	ILLINOIS	FED. AID PROJECT		CONTRACT NO. 63024

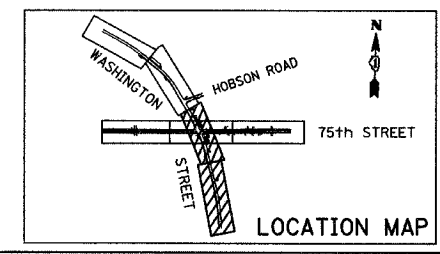
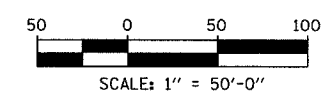


LEGEND

- (9) - DENOTES SIGN PANEL TYPE OR TYPES ON A SINGLE MOUNTING (SEE SIGNING LEGEND FOR CORRESPONDING PANEL OR PANELS).
- STA. XXX+XX.XX - INDICATES STATIONING ALONG EITHER THE 75th STREET CENTERLINE OR THE NB WASHINGTON STREET BASELINE.
- OFFSET: XX.X' RT OR LT - INDICATES OFFSET FROM EITHER THE 75th STREET CENTERLINE OR THE NB WASHINGTON STREET BASELINE.
- (SIGNAL POST MOUNT) - INDICATES MOUNTING TYPE; IF IT IS NOT DENOTED, THE PANEL IS GROUND MOUNTED.
- (75th ST @) - DENOTES THE ALIGNMENT BEING USED FOR STATIONING AND OFFSET.

NOTES:


1. ALL OFFSETS ARE TO THE SIGN PANEL EDGE UNLESS OTHERWISE NOTED.
2. ALL SIGNS SHALL BE GROUND MOUNTED UNLESS OTHERWISE NOTED.
3. FOR ALL STANDARD SIGNS, SEE THE SIGNING LEGEND FOR SIGN DIMENSIONS.



REVISIONS	
NAME	DATE

INTERSECTION IMPROVEMENT
 WASHINGTON STREET - 75th STREET
 PROPOSED SIGNING PLAN
 WASHINGTON STREET
 SHEET 2 OF 4
 STA. 448+50.00 TO STA. 467+52.70

CONSULTANT
TYLIN INTERNATIONAL

City of  **Naperville**

DRAWN: _____ SHEET NO. _____
 CHECKED: _____
 APPROVED: _____
 DATE: APRIL 11, 2008
 SCALE: _____
 JOB NO.: P-91-494-00 PROJECT NO.: M-CMM-7003 (985)

P:\630241\Drawings\Signing\02.dwg 4/11/2008 10:55:07 AM