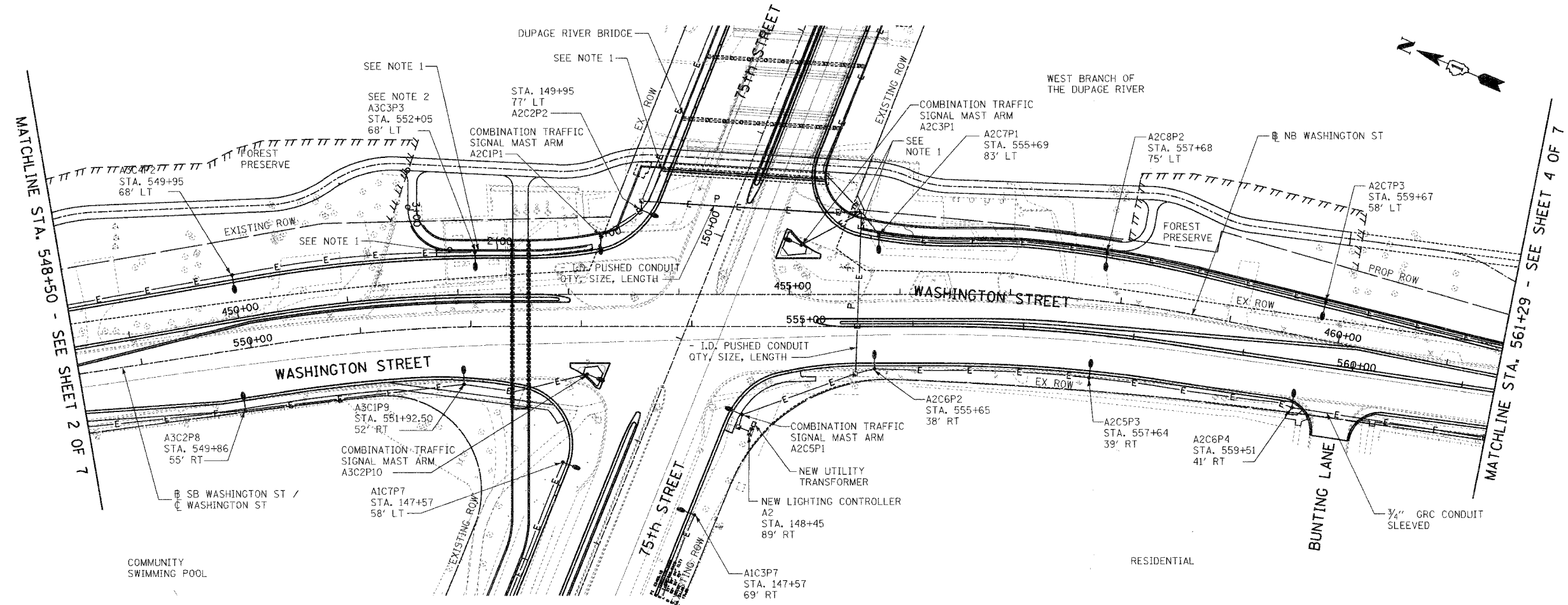


F.A.U. RTE.	SECTION	COUNTY	TOTAL SHEETS	SHEET NO.
2552	00-00114-00-PV	DUPAGE	563	231
STA.	TO STA.			
FED. ROAD DIST. NO.	ILLINOIS	FED. AID PROJECT		




- NOTES:
1. UNIT DUCT ENTERS CONDUIT EMBEDDED IN STRUCTURE. REFER TO STRUCTURAL PLANS.
  2. LIGHT POLE MOUNTED ON STRUCTURE. SO NOT INSTALL BREAKAWAY DEVICE.

REVISIONS	
NAME	DATE

INTERSECTION IMPROVEMENT  
 WASHINGTON STREET - 75th STREET  
 PROPOSED ELECTRICAL PLAN  
 WASHINGTON STREET  
 SHEET 3 OF 7  
 STA. 548+50 TO STA. 561+50

CONSULTANT  
**TYLIN INTERNATIONAL**

City of  **Naperville**

DRAWN: FO	SHEET NO.
CHECKED: FI	
APPROVED: DEM	
DATE: 04/11/08	
SCALE: 1"=50'-0"	
JOB NO: P-91-494-00	PROJECT NO: CMM-7003 (983)

