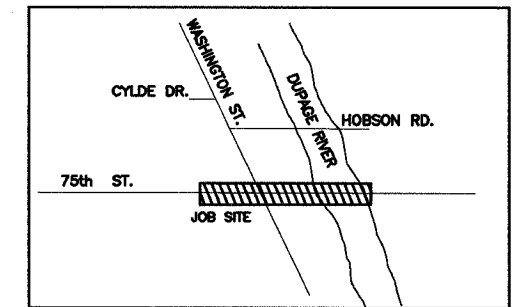


F.A. RTE.	2552	SECTION	00-0014-00-PV	COUNTY	DUPAGE	TOTAL SHEETS	563	SHEET NO.	248
-----------	------	---------	---------------	--------	--------	--------------	-----	-----------	-----

STA.	TO STA.	
FED. ROAD DIST. NO.	ILLINOIS	FED. AID PROJECT
CONTRACT 63024		



LEGEND

EXISTING

- E-WOOD POLE
- E-DPU-ELECTRIC PEDESTAL
- E-DPU-ELECTRIC TRANSFORMER
- E-SWITCH GEAR AND VAULT
- E-DPU-ELECTRIC FACILITIES
- E-CURB

PROPOSED

- PROPOSED CURB AND CONSTRUCTION
- PROPOSED-TYPE "A" MANHOLE
- PROPOSED-TYPE "E" MANHOLE
- PROPOSED-TYPE "G" MANHOLE
- PROPOSED-PVC DUCT BANK
- PROPOSED-TRANSFORMER VAULT
- PROPOSED-DPU-E PEDESTAL

- 1311U814
E-TRANSFORMER VAULT & GROUND PER C30-0011 AND 56270-270
NORTH 140°
①STA: 147+67.5
1-3-3" 30' PVC BENDS
1-3-3" BELL FITTINGS
1-3-3" PLUGS
- 1311H812/EQ
E-4' X 8' HANDHOLE PER C30-6336
1-GROUNDS PER C30-1180
1-2-6" 30' STEEL BENDS
1-2-6" PLUGS
- 1311U812
E-36S
1-3-6" 30' PVC BENDS
1-3-6" BELL FITTINGS
1-3-6" PLUGS
PER C30-0013, (SEE CONNECTING TO EXISTING SWITCH GEAR VAULT.)
- 1311U711
E-36S
1-4-8" 30' STEEL BENDS
1-4-8" BELL FITTINGS
1-4-8" PLUGS
PER C30-0013, (SEE CONNECTING TO EXISTING SWITCH GEAR VAULT.)
- 1311U712
E-75KVA
1-2-6" 22' STEEL BENDS
- 1311M811
E-TYPE 'G' MANHOLE
- 1311N715
E-126SP
- 1311U813
E-TRANSFORMER VAULT & GROUND PER C30-0011 AND 56270-270
SOUTH 95°
①STA: 147+64.8
1-6-3" 30' PVC BENDS
1-6-3" BELL FITTINGS
1-6-3" PLUGS
- 1311M815
E-TYPE 'G' MANHOLE PER M30-1170
①STA: 148+17.5
SOUTH 89.25°
AND SPECIFICATIONS (TYPICAL ELEVATION DETAIL)
1-4-12" CONCRETE COLLARS
1-2-FRAME & COVER
1-GROUNDS PER C30-1170
- 1311M813
E-TYPE 'G' MANHOLE PER M30-1170
①STA: 143+50.9
NORTH 88.5°
AND SPECIFICATIONS (TYPICAL ELEVATION DETAIL)
1-4-12" CONCRETE COLLARS
1-2-FRAME & COVER
1-GROUNDS PER C30-1170
- 1311U812
E-TYPE 'G' MANHOLE PER M30-1170
①STA: 143+81.9
SOUTH 92.3°
1-5-3" 30' PVC BENDS
1-5-3" BELL FITTINGS
1-5-3" PLUGS

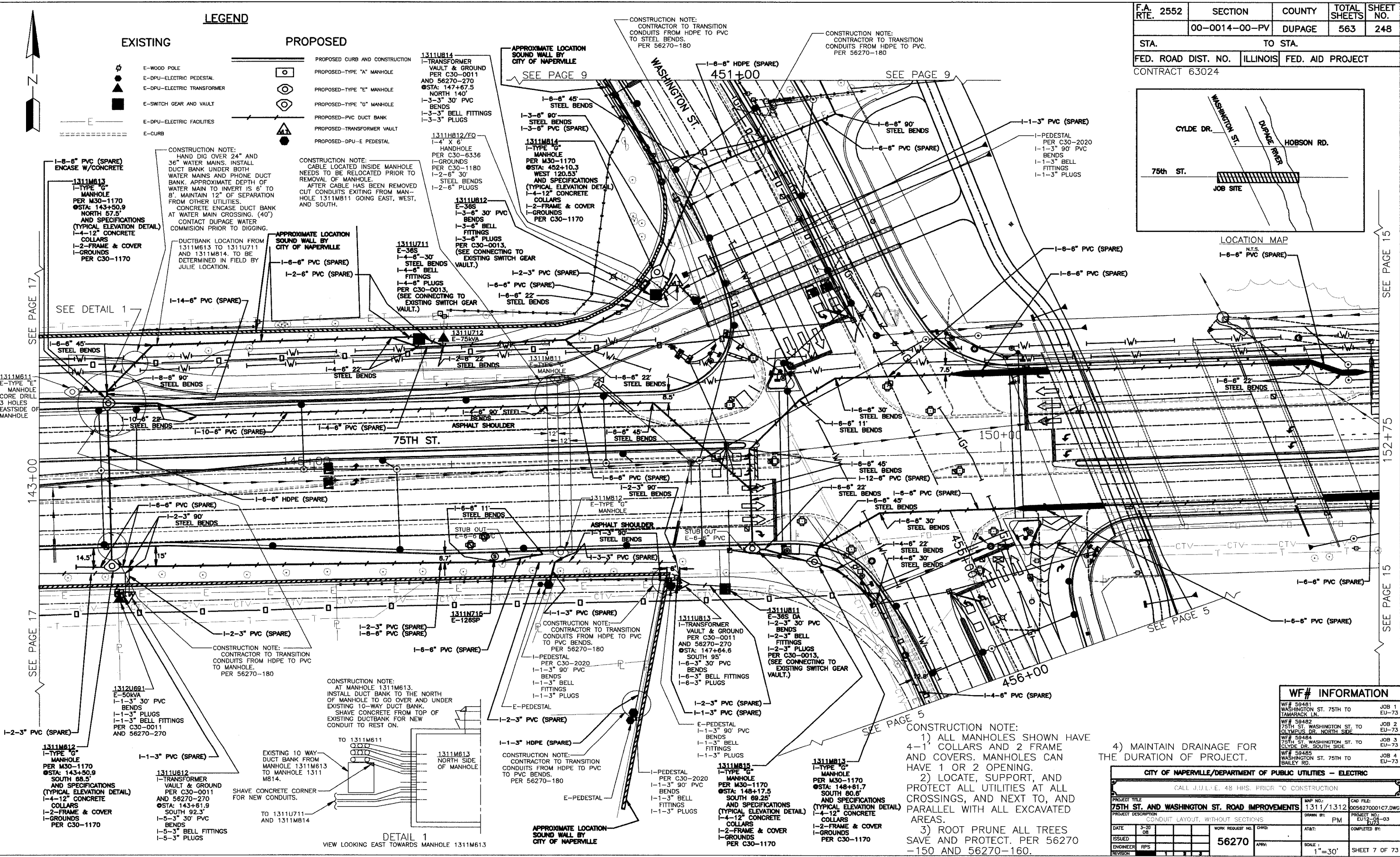
CONSTRUCTION NOTE:
HAND DIG OVER 24" AND 36" WATER MAINS. INSTALL DUCT BANK UNDER BOTH WATER MAINS AND PHONE DUCT BANK. APPROXIMATE DEPTH OF WATER MAIN TO INVERT IS 6' TO 8'. MAINTAIN 12" OF SEPARATION FROM OTHER UTILITIES.
CONCRETE ENCASE DUCT BANK AT WATER MAIN CROSSING. (40') CONTACT DUPAGE WATER COMMISSION PRIOR TO DIGGING.

CONSTRUCTION NOTE:
CABLE LOCATED INSIDE MANHOLE NEEDS TO BE RELOCATED PRIOR TO REMOVAL OF MANHOLE. AFTER CABLE HAS BEEN REMOVED CUT CONDUITS EXITING FROM MANHOLE. 1311M811 GOING EAST, WEST, AND SOUTH.

DUCTBANK LOCATION FROM 1311M813 TO 1311U711 AND 1311M814. TO BE DETERMINED IN FIELD BY JULIE LOCATION.

CONSTRUCTION NOTE:
CONTRACTOR TO TRANSITION CONDUITS FROM HDPE TO PVC TO STEEL BENDS.
PER 56270-180

CONSTRUCTION NOTE:
CONTRACTOR TO TRANSITION CONDUITS FROM HDPE TO PVC TO STEEL BENDS.
PER 56270-180



SEE DETAIL 1

APPROXIMATE LOCATION SOUND WALL BY CITY OF NAPERVILLE
SEE PAGE 9

SEE PAGE 9

LOCATION MAP
N.T.S.
1-6-6" PVC (SPARE)

SEE PAGE 15

152+75

SEE PAGE 15

CONSTRUCTION NOTE:
CONTRACTOR TO TRANSITION CONDUITS FROM HDPE TO PVC TO MANHOLE.
PER 56270-180

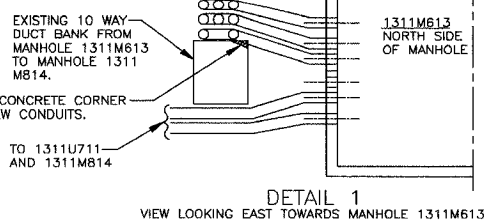
CONSTRUCTION NOTE:
AT MANHOLE 1311M813, INSTALL DUCT BANK TO THE NORTH OF MANHOLE TO GO OVER AND UNDER EXISTING 10-WAY DUCT BANK. SHAVE CONCRETE FROM TOP OF EXISTING DUCTBANK FOR NEW CONDUIT TO REST ON.

CONSTRUCTION NOTE:
CONTRACTOR TO TRANSITION CONDUITS FROM HDPE TO PVC TO PVC BENDS.
PER 56270-180

CONSTRUCTION NOTE:
CONTRACTOR TO TRANSITION CONDUITS FROM HDPE TO PVC TO PVC BENDS.
PER 56270-180

CONSTRUCTION NOTE:
1) ALL MANHOLES SHOWN HAVE 4-1" COLLARS AND 2 FRAME AND COVERS. MANHOLES CAN HAVE 1 OR 2 OPENING.
2) LOCATE, SUPPORT, AND PROTECT ALL UTILITIES AT ALL CROSSINGS, AND NEXT TO, AND PARALLEL WITH ALL EXCAVATED AREAS.
3) ROOT PRUNE ALL TREES SAVE AND PROTECT. PER 56270-150 AND 56270-160.

4) MAINTAIN DRAINAGE FOR THE DURATION OF PROJECT.



DETAIL 1
VIEW LOOKING EAST TOWARDS MANHOLE 1311M813

APPROXIMATE LOCATION SOUND WALL BY CITY OF NAPERVILLE

WF# INFORMATION

WF# 59481 WASHINGTON ST. 75TH TO TAMARACK LN.	JOB 1 EU-73
WF# 59482 75TH ST. WASHINGTON ST. TO OLYMPIUS DR. NORTH SIDE	JOB 2 EU-73
WF# 59484 75TH ST. WASHINGTON ST. TO CLYDE DR. SOUTH SIDE	JOB 3 EU-73
WF# 59485 WASHINGTON ST. 75TH TO BAILEY RD.	JOB 4 EU-73

CITY OF NAPERVILLE/DEPARTMENT OF PUBLIC UTILITIES - ELECTRIC			
CALL JULIE, 48 HRS. PRIOR TO CONSTRUCTION			
PROJECT TITLE 75TH ST. AND WASHINGTON ST. ROAD IMPROVEMENTS	MAP NO. 1311/1312	CAD FILE 0056270001C7.DWG	
PROJECT DESCRIPTION CONDUIT LAYOUT, WITHOUT SECTIONS	DRAWN BY PM	PROJECT NO. EU12-708-03	DATE 3-30-08
DATE 3-30-08	WORK REQUEST NO. 56270	AT&T: COMPLETED BY:	ISSUED RPS
ENGINEER RPS	APPR:	SCALE: 1"=30'	REVISION 1 3 3
			SHEET 7 OF 73