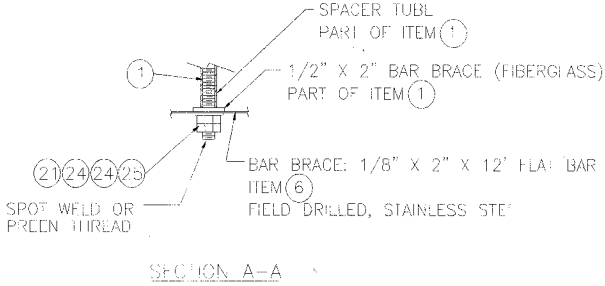
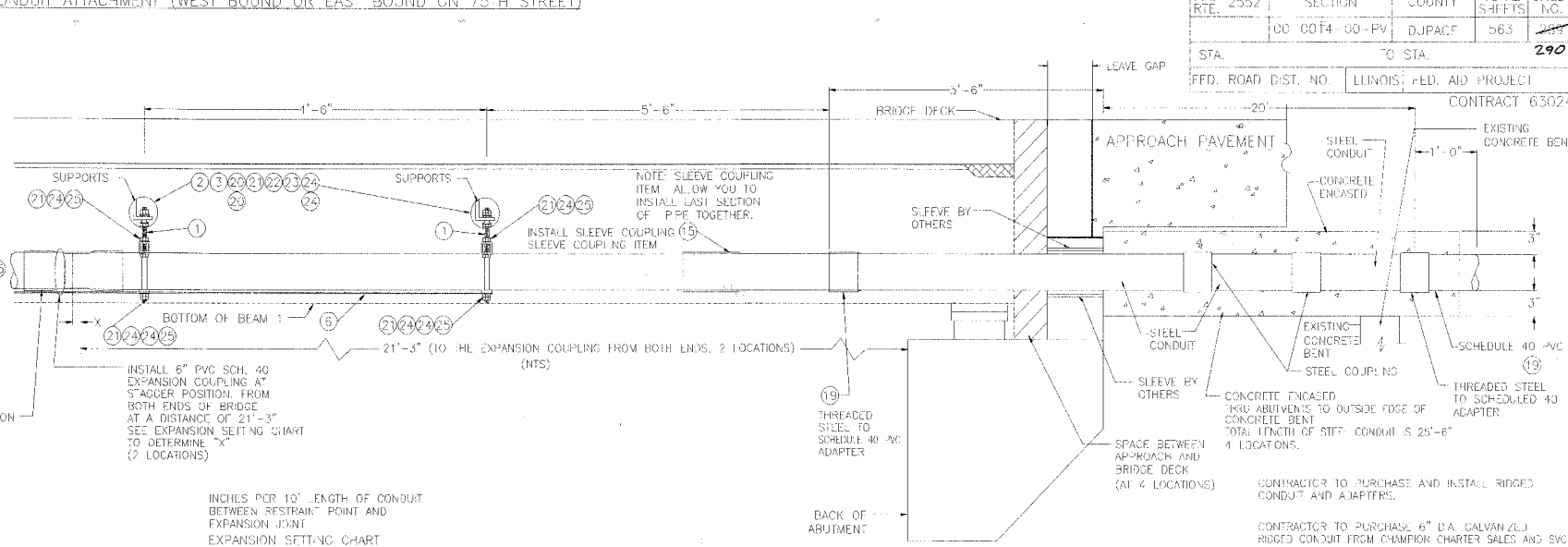
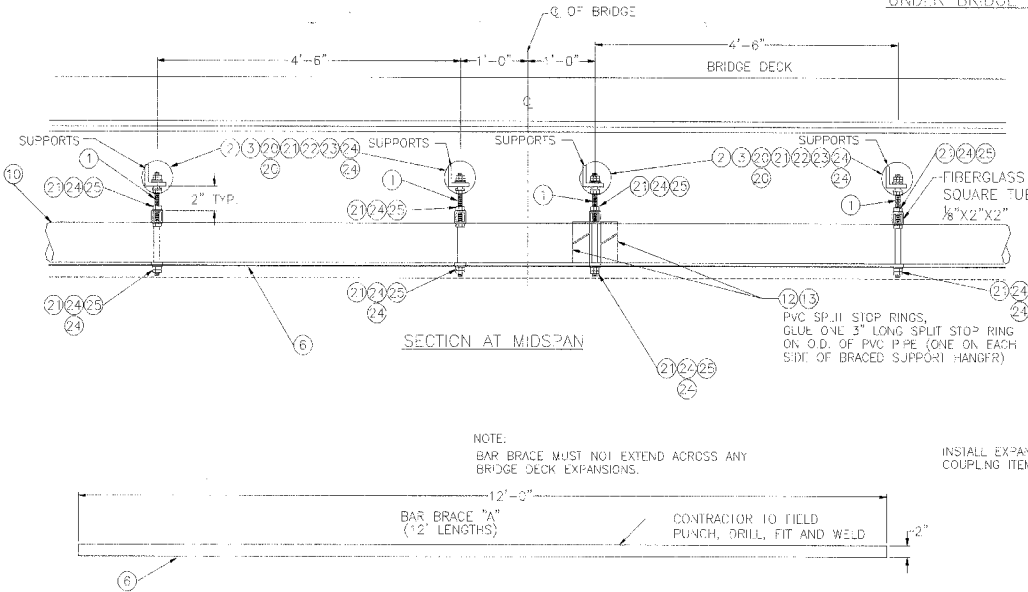


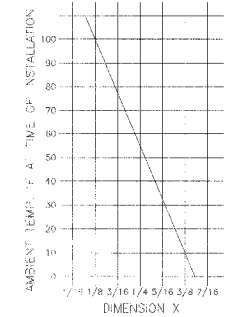
UNDER BRIDGE CONDUIT ATTACHMENT (WEST BOUND OR EAST BOUND ON 75TH STREET)

F.A. NO.	SECTION	COUNTY	TOTAL SHEETS	SHEET NO.
2552	00 004-00-PV	DJPACF	563	290
STA.	TO STA.		290	
FED. ROAD DIST. NO.	ILLINOIS FED. AID PROJECT		CONTRACT 63024	

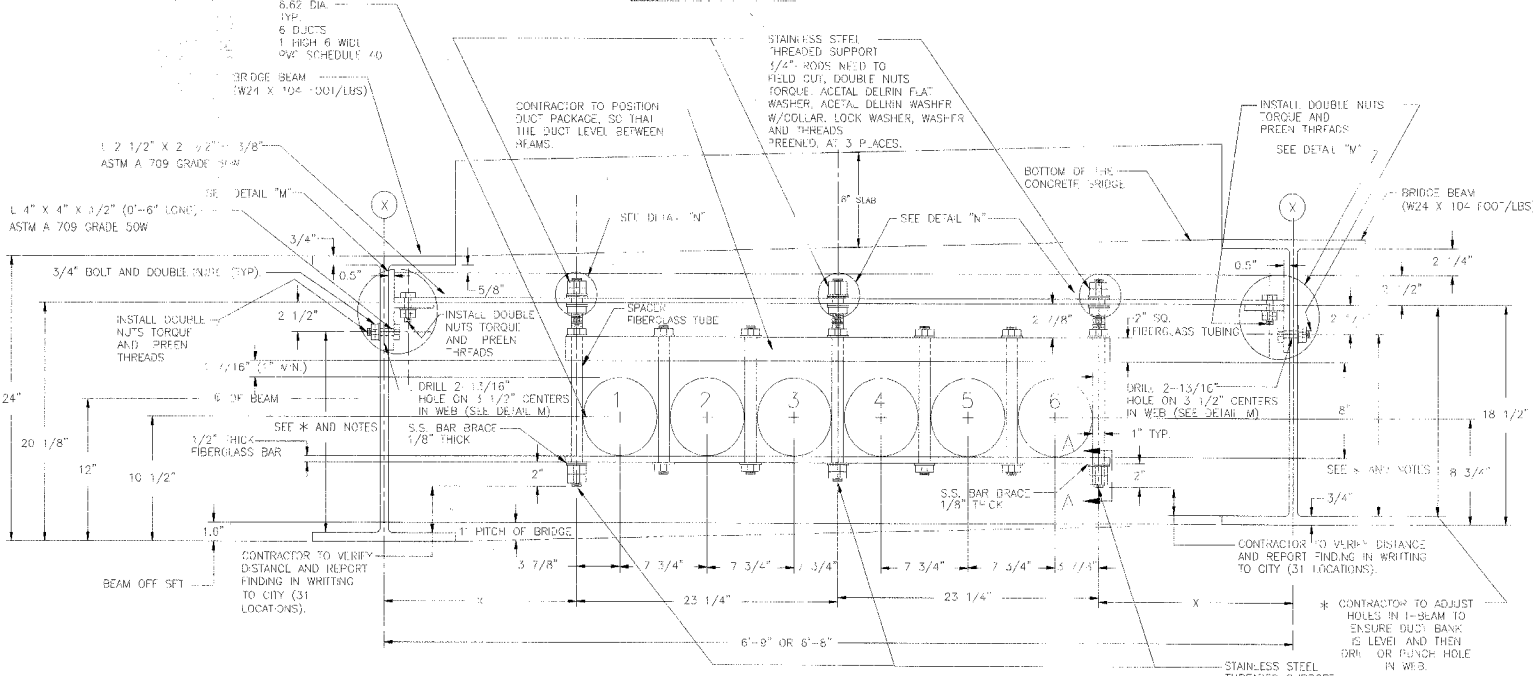


INCHES PER 10' LENGTH OF CONDUIT BETWEEN RESTRAIN POINT AND EXPANSION JOINT EXPANSION SETTING CHART

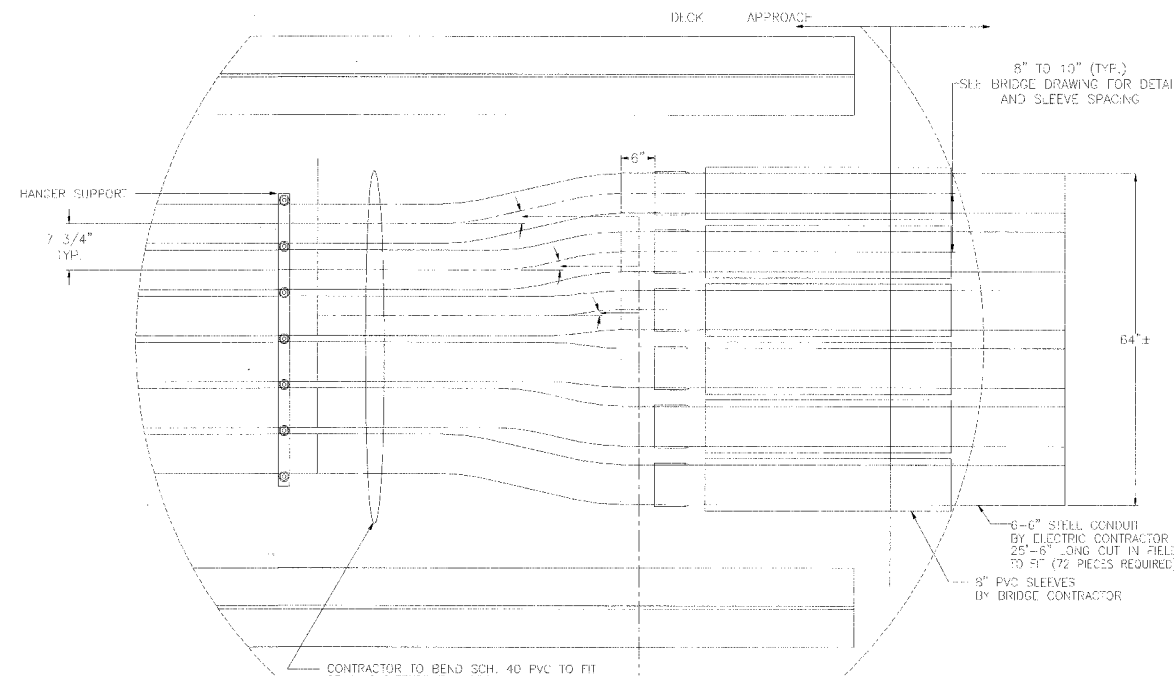
- 1) INSERT NIPPLE INTO BODY UNTIL IT REACHES BOTTOM, MARK NIPPLE AT END OF BODY.
- 2) PULL NIPPLE OUT OF BODY AND DETERMINE DISTANCE "X" CALCULATE FROM CHART.



TYPICAL LOOKING EAST



SEE DETAIL ON PAGE 48



SEE PAGE 50 FOR BILL OF MATERIALS

W# INFORMATION

W# 20481	WASHINGTON ST. 75TH TO OLYMPIA DR. EAST SIDE	JOB 1	EU-73
W# 20482	75TH WASHINGTON ST. TO OLYMPIA DR. NORTH SIDE	JOB 2	EU-73
W# 20483	75TH WASHINGTON ST. TO OLYMPIA DR. SOUTH SIDE	JOB 3	EU-73
W# 20485	WASHINGTON ST. 75TH TO BAILEY RD. EAST SIDE	JOB 4	EU-73

CITY OF MADERVILLE/DEPARMIINI OR PUBLIC UTILITIES - ELECTRIC

CALL JULIE. 48 HRS. PRIOR TO CONSTRUCTION

PROJECT NO.	75TH ST. AND WASHINGTON ST. ROAD IMPROVEMENTS	DATE	11/11/20
PROJECT DESCRIPTION	TRENCH SECTION DETAILS	DATE	11/11/20
DATE	11/11/20	DATE	11/11/20
ISSUED	56270	DATE	11/11/20
REVISION		DATE	11/11/20