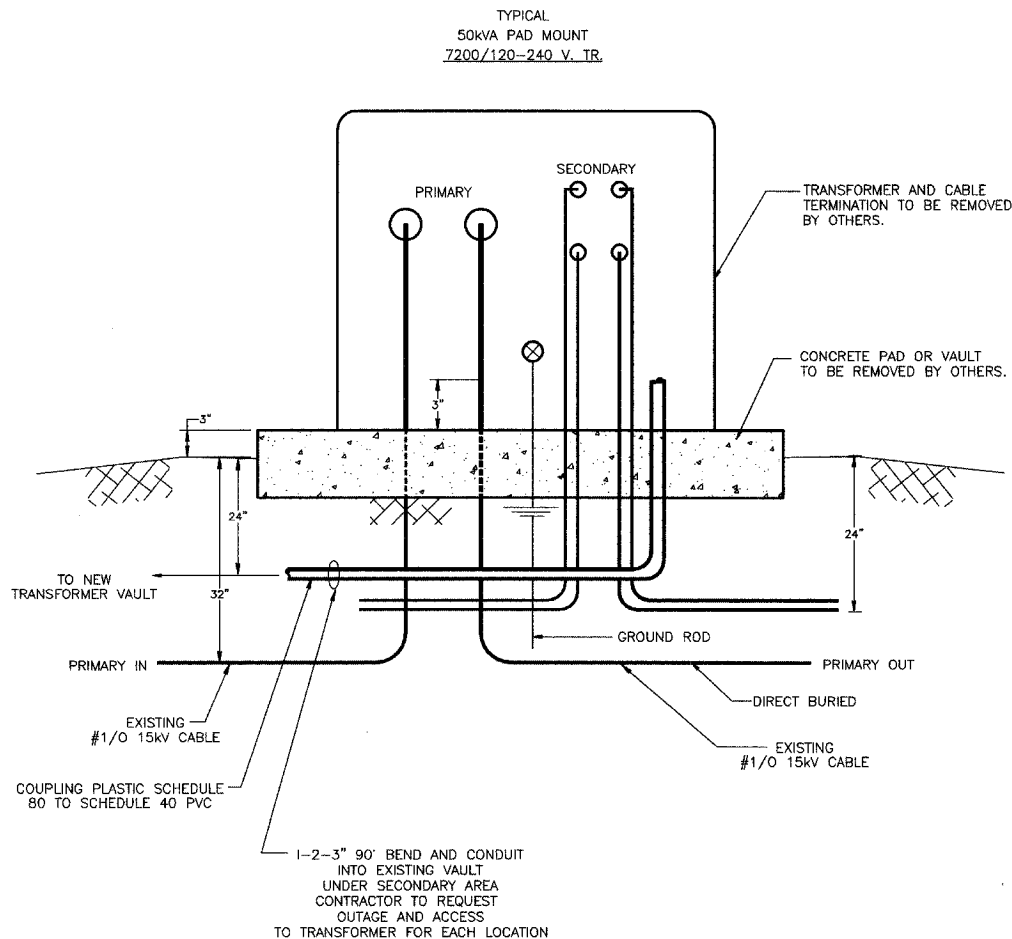


F.A. RTE. 2552	SECTION 00-0014-00-PV	COUNTY DUPAGE	TOTAL SHEETS 563	SHEET NO. 307
STA. TO STA.		FED. ROAD DIST. NO. ILLINOIS FED. AID PROJECT		
CONTRACT 63024				

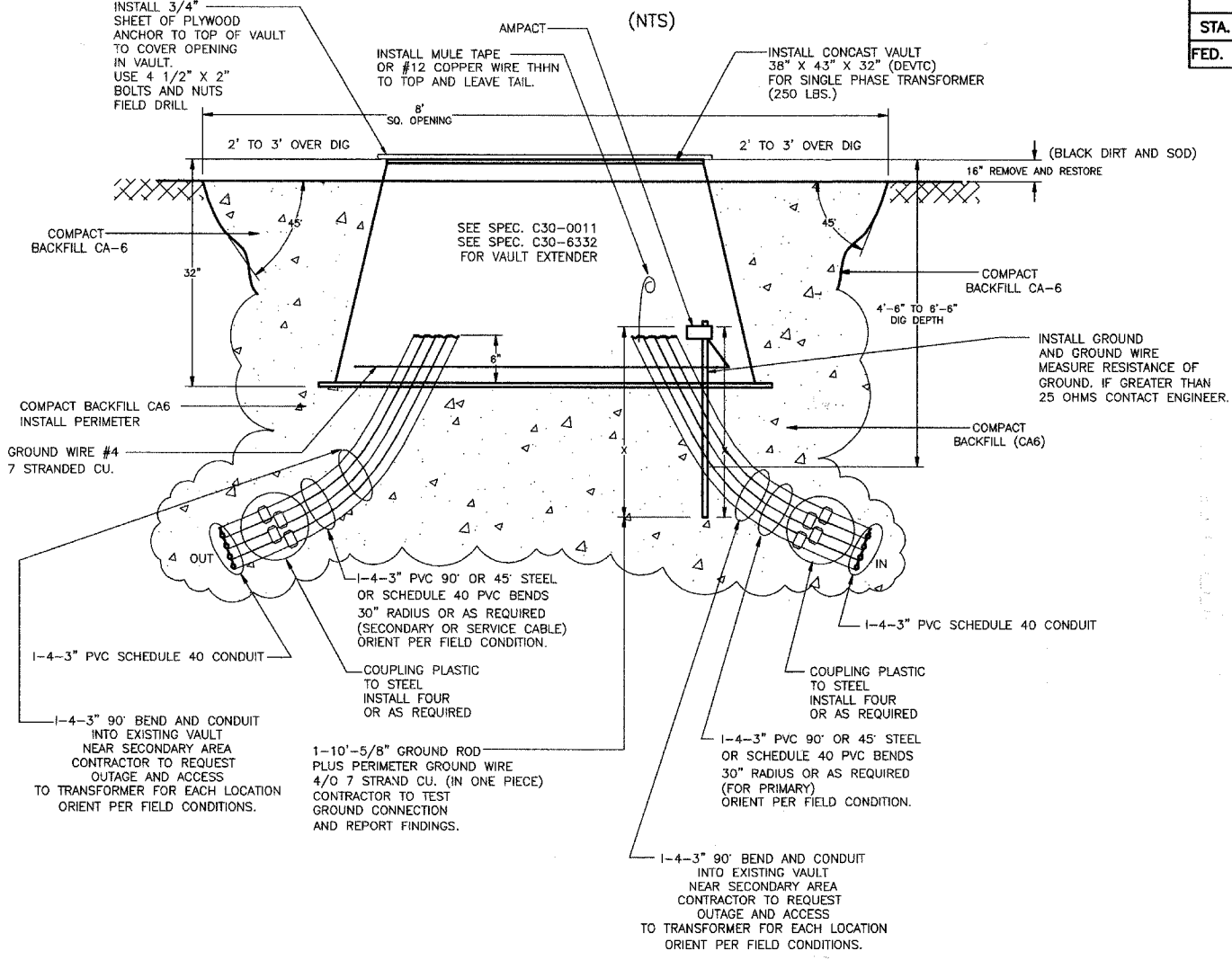
**EXISTING TRANSFORMER CONNECTION DETAIL**



- NOTES:**
- THIS DRAWING SHOWS AN EXISTING TRANSFORMER WITH CABLE INSTALLED WITH MATERIAL LIST.
  - CONTRACTOR TO OBTAIN OUTAGE OF TRANSFORMER PRIOR TO DOING ANY WORK.
  - CONTRACTOR TO INSTALL 3", 5" AND 6" CONDUIT INTO EXISTING AS SPECIFIED IN SPECIFICATIONS CAP AND PLUGS ALL CONDUITS.
  - ALL GROUNDING CONNECTIONS AND TERMINATORS SHALL BE INSPECTED TO DETERMINE CONDITION OF CONNECTIONS BY THE CONTRACTOR REPORT FINDINGS.

NAPERVILLE PUBLIC UTILITIES DEPARTMENT ELECTRIC STANDARDS	<b>EXISTING TRANSFORMER CONNECTION DETAIL</b>	DATE: 04-04-08 Page 1 of 1 56270-600
--	---	--

**INSTALL NEW TRANSFORMER VAULT (TYPICAL)**



- NOTES:**
- INSTALL 3/4" CUT TO FIT PLYWOOD OVER OPENING HOLD DOWN WITH 4 BOLTS & NUTS 1/2" HOLES. FIELD DRILL VAULT AND POLYWOOD.
  - ESTIMATED WEIGHT - 300 LBS.
  - VAULT MATERIAL - FIBERCRETE FORMED.
  - INSTALL TOP OF VAULT 6" ABOVE FINAL GRADE.
  - INSTALL 2 TO 7 (3" DIA) SCHEDULE 40 90° ELBOWS OR 3" DIA. GALVANIZED ELBOWS INTO VAULT. CONTACT CITY ELECTRICAL ENGINEER (630) 420-6190 FOR LOCATION OF THE ELBOWS IN THE VAULT AND ORIENTATION OF VAULT.
  - INSTALL 1-5/8" DIA. X 10'-0" LONG GROUND RODS FOR EACH VAULT. LOCATE ONE ROD AT A CORNER. INSTALL 6" FROM THE CORNER. GROUND ROD TO BE DRIVEN 6" BELOW FINISHED GRADE.
  - INSTALL PERIMETER GROUND WIRE #4/0, 7 STRANDS COPPER AND ATTACH TO ONE ROD. (ONE CONTINUOUS PIECE. APPROXIMATELY 16' OF WIRE).
  - CONTRACTOR TO ESTABLISH ELEVATION AND LEVEL.
  - CONTRACTOR SHALL SUPPORT AND REROUTE UTILITIES AS REQUIRED.
  - CA-6 BACKFILL TO BE PLACED 360° AROUND TRANSFORMER VAULT MINUS SURFACE RESTORATION.
  - ALL EXCAVATED MATERIAL TO BE REMOVED OFF SITE.
  - BENDS TO BE INSTALLED PER FIELD CONDITIONS.
  - CUT HOLE IN VAULT AS REQUIRED TO INSTALL CONDUIT.
  - INSTALL PLUG FITTING AND TAPE ON ALL CONDUIT BENDS.
  - INSTALL VAULT EXTENDER PER C30-6332 (DEVAE).

NAPERVILLE PUBLIC UTILITIES DEPARTMENT ELECTRIC STANDARDS	<b>INSTALL NEW TRANSFORMER VAULT (TYPICAL)</b>	DATE: 04-04-08 Page 1 of 1 56270-610
--	--	--

<b>WF# INFORMATION</b>		<b>CITY OF NAPERVILLE/DEPARTMENT OF PUBLIC UTILITIES - ELECTRIC</b>			
WF# 59481 WASHINGTON ST. 75TH TO OLYMPUS DR. EAST SIDE	JOB 1 EU-73	CALL J.U.L.I.E. 48 HRS. PRIOR TO CONSTRUCTION			
WF# 59482 75TH WASHINGTON ST. TO OLYMPUS DR. NORTH SIDE	JOB 2 EU-73	PROJECT TITLE <b>75TH ST. AND WASHINGTON ST. ROAD IMPROVEMENTS</b>		MAP NO.:	CAD FILE: D056270001D66.DWG
WF# 59484 75TH WASHINGTON ST. TO CLYDE DR. SOUTH SIDE	JOB 3 EU-73	PROJECT DESCRIPTION TRENCH SECTION DETAILS		DRAWN BY: JK, PM	PROJECT NO. EU12-06-03 EU73
WF# 59485 WASHINGTON ST. 75TH TO BAILEY RD. EAST SIDE	JOB 4 EU-73	DATE: 4-01-08	ISSUED	WORK REQUEST NO. 56270	CHRG:
		ENGINEER: RPS	REVISION: 1 2 3	APPR:	SBC:
				SCALE: NTS	COMPLETED BY:
					SHEET 66 OF 73