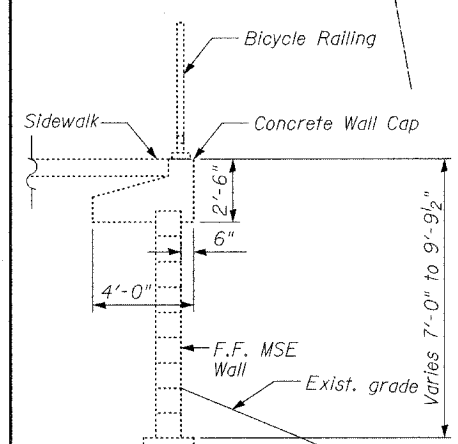


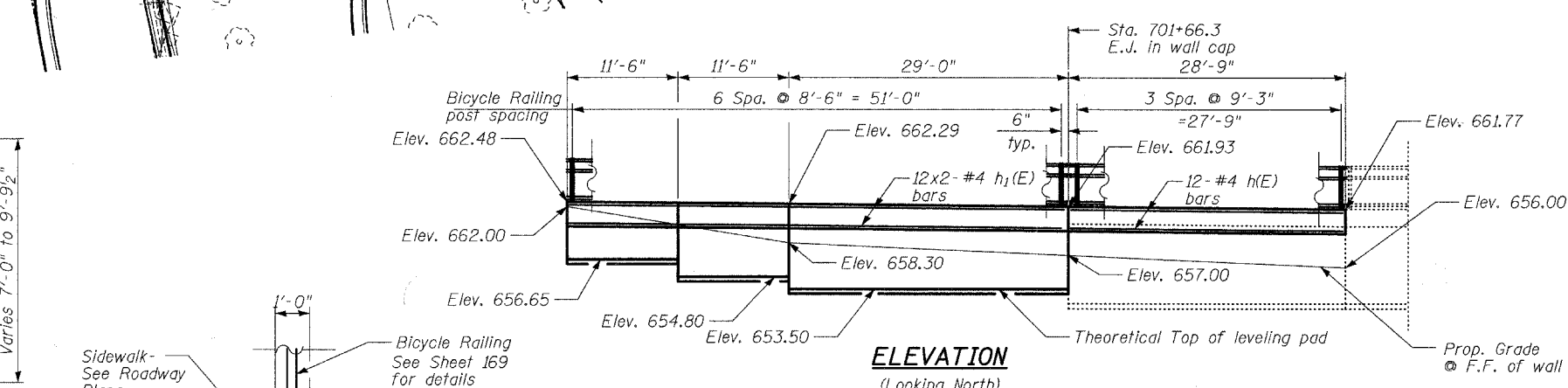
BILL OF MATERIAL

Bar	No.	Size	Length	Shape	
h(E)	12	#4	28'-6"	—	
h (E)	24	#4	26'-9"	—	
v(E)	81	#4	8'-0"	⌊	
v ₁ (E)	81	#4	2'-9"	⌊	
Concrete Structures				Cu Yd	20.2
Reinforcement Bars, Epoxy Coated				Pound	1,240
Bicycle Railing				Foot	80.8
Segmental Concrete Block Wall				Sq Ft	267

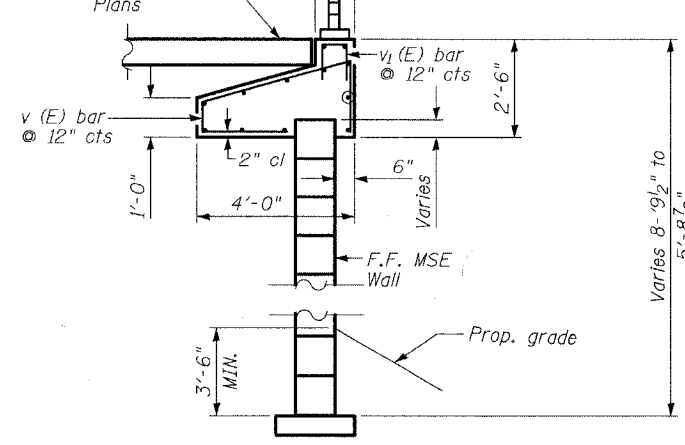


TYPICAL SECTION THRU MSE WALL

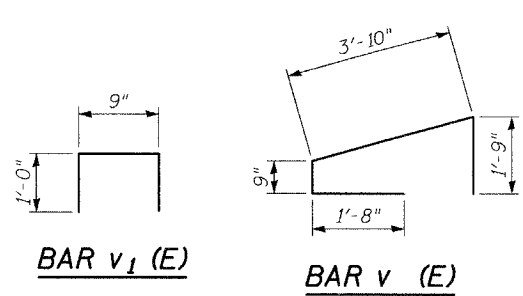
(Between Sta. 701+27.7 to Sta. 701+95.1)



ELEVATION (Looking North)



PROPOSED SECTION THRU WALL



DESIGN STRESSES FIELD UNITS

f'c = 3,500 psi
fy = 60,000 psi (reinf.)

GENERAL NOTES

- All Offsets are measured to the F.F. of Concrete Cap Wall
- Reinforcement bars designated (E) shall be epoxy coated.
- Plan dimensions and details relative to existing plans are subject to routine variations. The Contractor shall field verify existing dimensions and details affecting new construction and make necessary approved adjustments prior to construction or ordering of materials. Such variations shall not be cause for additional compensation for a change in scope of the work, however, the Contractor will be paid for the quantity actually furnished based upon the unit price bid for the work.
- Reinforcement bars shall conform to the requirements of ASTM A 706 Gr 60 (IL Modified). See Special Provisions.
- The removal of portions of the existing concrete wall cap and MSE Wall shall be in accordance with the applicable portions of Section 501 of the Standard Specifications. This cost shall be included in the cost for Segmental Concrete Block Wall.

TYLIN INTERNATIONAL

DESIGNED	- SP
CHECKED	- SP PF
DRAWN	- SP
CHECKED	- SP

REVISIONS	
NAME	DATE

HOBSON ROAD RETAINING WALL

WASHINGTON - 75TH STREET
F.A.U. ROUTE 2552
SECTION 00-00114-00-PV
DUPAGE COUNTY