

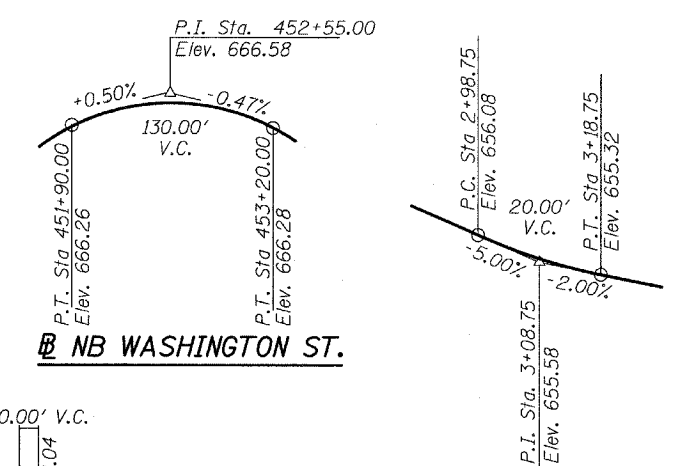
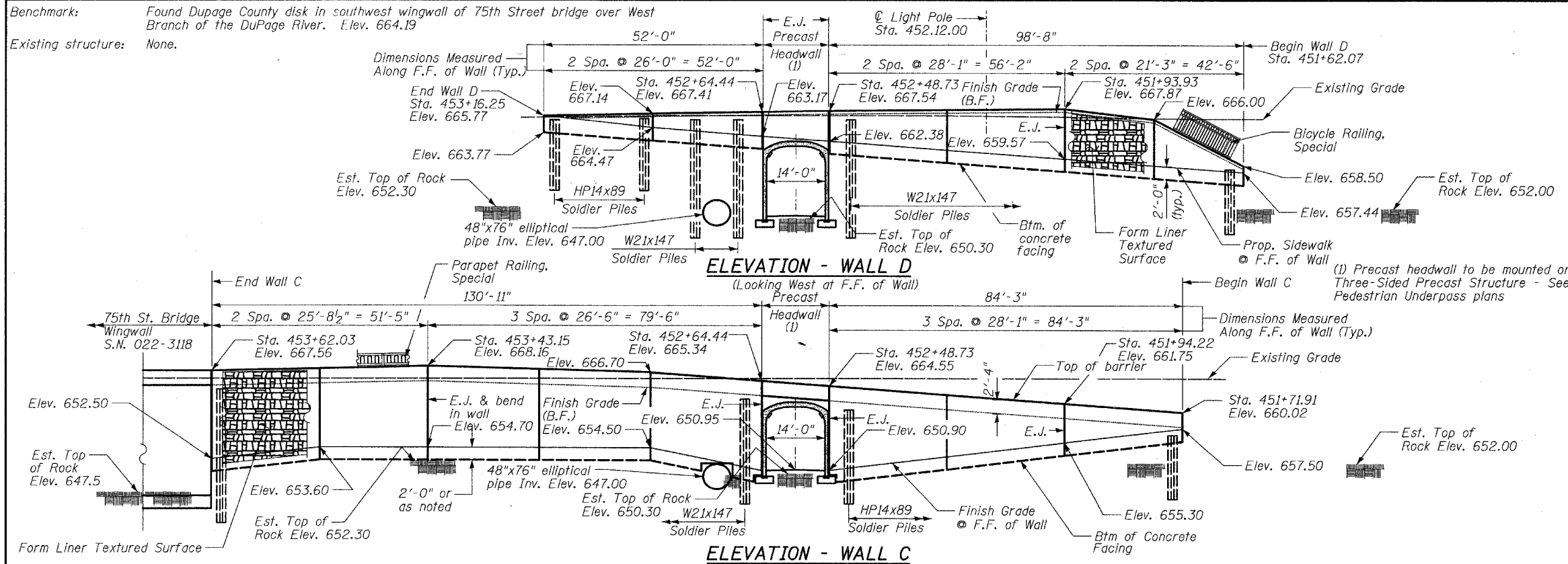
Benchmark: Found Dupage County disk in southwest wingwall of 75th Street bridge over West Branch of the DuPage River. Elev. 664.19

Existing structure: None.

F.A.U. ROUTE NO.	SECTION	COUNTY	TOTAL SHEETS	SHEET NO.
2552		DUPAGE	563	398
FED. ROAD DIST. NO.		ILLINOIS	FED. AID PROJECT-	
00-00114-00-PV		CONTRACT NO. 63024		

SHEET NO. - 1

13 - SHEETS



DESIGN SPECIFICATIONS
2002 AASHTO

DESIGN STRESSES

FIELD UNITS
 $f'_c = 3,500$ psi
 $f_y = 60,000$ psi (reinf.)
 $f_y = 36,000$ psi (AASHTO M270 grade 36)

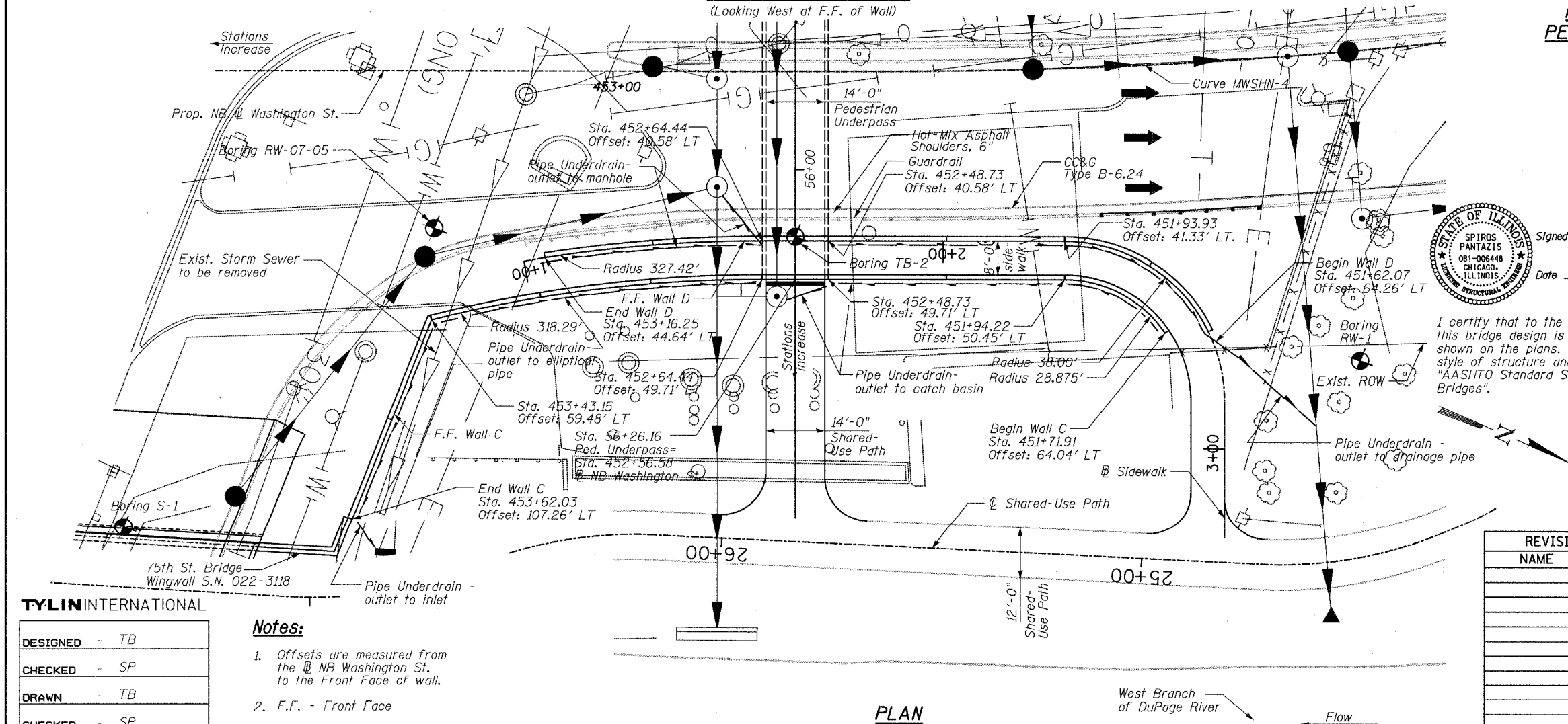
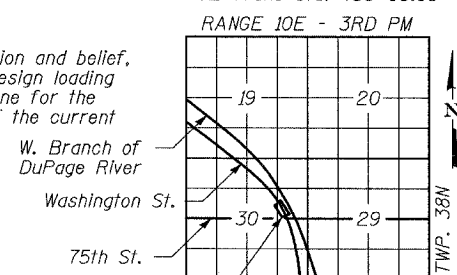
Curve MWSHN-4
 PI Sta. 451+27.61
 $\Delta = 9^\circ 51' 07''$ (RT)
 $D = 4^\circ 29' 38''$
 $T = 109.89'$
 $R = 1,275.00'$
 $L = 219.24'$
 $E = 4.73'$
 PC Sta. 450+17.72
 PT Sta. 452+36.96
 $SE = 4.35'$
 Begin SE Trans Sta. 448+57.72
 Begin Full SE Sta. 450+72.72
 End Full SE Trans Sta. 451+81.96
 End SE Trans Sta. 453+96.96

PROFILE GRADE PEDESTRIAN TUNNEL



Signed: *AP*
 Spiros Pantazis, S.E. II, Lic. No. 081-006448
 Expires 11-30-2008.
 Date: 4/11/08

I certify that to the best of my knowledge, information and belief, this bridge design is structurally adequate for the design loading shown on the plans. The design is an economical one for the style of structure and complies with requirements of the current "AASHTO Standard Specifications of Highway Bridges".



REVISIONS	
NAME	DATE

WALLS C & D GENERAL PLAN

WASHINGTON - 75TH STREET
 F.A.U. ROUTE 2552
 SECTION 00-00114-00-PV
 DUPAGE COUNTY

TYLIN INTERNATIONAL

DESIGNED	- TB
CHECKED	- SP
DRAWN	- TB
CHECKED	- SP

- Notes:**
- Offsets are measured from the @ NB Washington St. to the Front Face of wall.
 - F.F. - Front Face
 - B.F. - Back Face