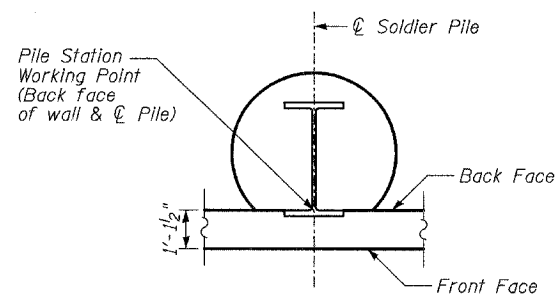


PILE LAYOUT - WALL C

Pile	Station at Working Point	Offset	Top of Pile Elev.	Pile Tip Elev.	Pile Length (ft.)	Pile Type	Estimated Top of Rock Elev.	Pile Embedment in Soil (ft.)	Min. Embedment in Rock (ft.)	Soldier Pile Encasement diameter (in.)
P-1	451+72.37	61.31' Lt	656.35	646.93	9'-5"	HP14x89	652.00	4.52'	5.00'	30"
P-2	451+80.84	53.34' Lt	657.09	646.92	10'-2"	HP14x89	652.00	4.88'	5.00'	30"
P-3	451+91.70	49.53' Lt	657.82	646.99	10'-10"	HP14x89	652.00	6.56'	5.00'	30"
P-4	451+98.72	49.18' Lt	658.15	644.15	14'-0"	HP14x89	651.71	8.45'	7.50'	30"
P-5	452+07.78	48.93' Lt	658.62	643.62	15'-0"	HP14x89	651.14	9.05'	7.50'	30"
P-6	452+16.85	48.75' Lt	659.09	643.01	16'-1"	HP14x89	650.57	10.26'	7.50'	30"
P-7	452+25.92	48.63' Lt	659.56	642.73	16'-10"	HP14x89	650.30	12.05'	7.50'	30"
P-8	452+34.99	48.59' Lt	660.03	642.78	17'-3"	HP14x89	650.30	12.67'	7.50'	30"
P-9	452+44.33	48.58' Lt	660.50	642.75	17'-9"	HP14x89	650.30	13.88'	7.50'	30"
P-10	452+69.19	48.61' Lt	661.46	642.30	19'-2"	W21x147	651.30	16.42'	9.00'	30"
P-11	452+81.18	49.00' Lt	661.35	642.27	19'-1"	W21x147	651.30	16.38'	9.00'	30"
P-12	452+89.83	49.56' Lt	661.27	642.27	19'-0"	W21x147	651.30	16.26'	9.00'	30"
P-13	452+98.46	50.35' Lt	661.19	642.27	18'-11"	W21x147	651.30	14.20'	9.00'	30"
P-14	453+07.07	51.38' Lt	661.11	642.27	18'-10"	W21x147	651.30	16.10'	9.00'	30"
P-15	453+15.64	52.64' Lt	661.02	642.27	18'-9"	W21x147	651.30	16.02'	9.00'	30"
P-16	453+24.18	54.13' Lt	660.94	642.53	18'-5"	W21x147	651.57	15.46'	9.00'	30"
P-17	453+32.67	55.86' Lt	660.86	642.86	18'-0"	W21x147	651.89	15.86'	9.00'	30"
P-18	453+41.11	57.81' Lt	660.78	643.20	17'-7"	W21x147	652.22	15.78'	9.00'	30"
P-19	453+45.60	62.53' Lt	665.78	642.95	22'-10"	W21x147	652.02	15.46'	9.00'	30"
P-20	453+48.78	70.59' Lt	666.23	642.31	23'-11"	W21x147	651.38	9.44'	9.00'	30"
P-21	453+51.96	78.66' Lt	666.67	641.67	25'-0"	W21x147	650.74	8.72'	9.00'	30"
P-22	453+55.14	86.72' Lt	667.12	641.03	26'-1"	W21x147	650.10	16.23'	9.00'	30"
P-23	453+58.32	94.78' Lt	667.56	640.39	27'-2"	W21x147	649.46	7.26'	9.00'	30"
P-24	453+61.50	102.84' Lt	668.01	639.76	28'-3"	W21x147	648.82	6.54'	9.00'	30"

PILE LAYOUT - WALL D

Pile	Station at Working Point	Offset	Top of Pile Elev.	Pile Tip Elev.	Pile Length (ft.)	Pile Type	Estimated Top of Rock Elev.	Pile Embedment in Soil (ft.)	Min. Embedment in Rock (ft.)	Soldier Pile Encasement diameter (in.)
P-25	451+61.77	62.22' Lt	657.45	642.95	14'-6"	W21x147	652.00	3.06'	9.00'	30"
P-26	451+66.50	54.33' Lt	660.98	642.65	18'-4"	W21x147	651.96	3.60'	9.00'	30"
P-27	451+72.94	47.87' Lt	664.51	642.43	22'-1"	W21x147	651.72	6.66'	9.00'	30"
P-28	451+80.72	43.21' Lt	665.26	642.17	23'-1"	W21x147	651.50	9.57'	9.00'	30"
P-29	451+89.39	40.65' Lt	666.14	641.97	24'-2"	W21x147	651.25	9.93'	9.00'	30"
P-30	451+98.42	40.06' Lt	666.18	641.85	24'-4"	W21x147	651.00	10.30'	9.00'	30"
P-31	452+07.46	39.81' Lt	666.13	641.63	24'-6"	W21x147	650.88	10.04'	9.00'	30"
P-32	452+16.51	39.63' Lt	666.09	641.34	24'-9"	W21x147	650.65	9.53'	9.00'	30"
P-33	452+25.56	39.51' Lt	666.03	641.28	24'-9"	W21x147	650.30	8.75'	9.00'	30"
P-34	452+34.62	39.46' Lt	665.97	641.22	24'-9"	W21x147	650.30	8.49'	9.00'	30"
P-35	452+43.88	39.46' Lt	665.91	641.24	24'-8"	W21x147	650.30	7.96'	9.00'	30"
P-36	452+69.29	39.49' Lt	665.69	643.44	22'-3"	W21x147	650.30	6.24'	7.00'	30"
P-37	452+81.13	39.86' Lt	665.57	643.90	21'-8"	W21x147	650.48	5.98'	7.00'	30"
P-38	452+91.60	40.55' Lt	665.41	652.32	13'-1"	HP14x89	651.30	4.83'	0.00'	30"
P-39	453+02.05	41.57' Lt	664.85	652.94	11'-11"	HP14x89	651.35	4.69'	0.00'	30"
P-40	453+12.46	42.92' Lt	664.30	653.55	10'-9"	HP14x89	651.75	3.55'	0.00'	30"



SOLDIER PILE WORKING POINT

TYLINT INTERNATIONAL

DESIGNED	- TB
CHECKED	- SP
DRAWN	- TB
CHECKED	- SP

REVISIONS	
NAME	DATE

**WALLS C AND D
PILE DETAILS**

WASHINGTON - 75TH STREET
F.A.U. ROUTE 2552
SECTION 00-00114-00-PV
DUPAGE COUNTY