

SECTION 11, TOWNSHIP 37, RANGE 12
SECTION 2, TOWNSHIP 37, RANGE 12

STATE OF ILLINOIS

DEPARTMENT OF TRANSPORTATION

DIVISION OF HIGHWAYS

PLANS FOR PROPOSED FEDERAL AID HIGHWAY

F. A. P. NO.	SECTION	COUNTY	TOTAL SHEETS	SHEET NO.
29	08-00055-00-LT	COOK	012	001
STA.		TO STA.		
FED. ROAD DIST. NO.	ILLINOIS	FED. AID PROJECT		

CONTRACT #63028

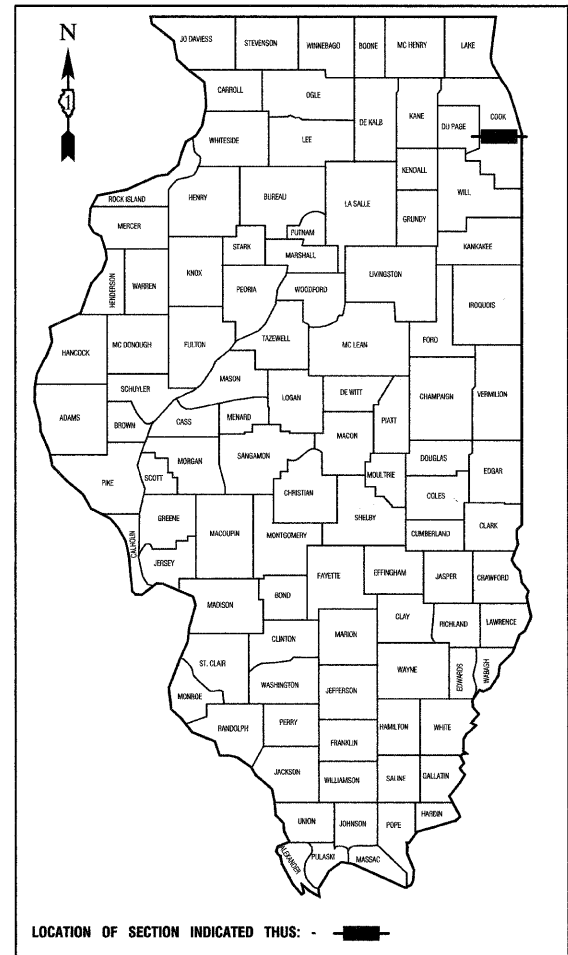
INDEX OF SHEETS

1. COVER SHEET
2. SUMMARY OF QUANTITIES & GENERAL NOTES
- 3.-6. PLAN SHEETS
7. WIRING DIAGRAM
- 8.-12. LIGHTING DETAILS

STATE STANDARDS

- 000001-05 STANDARD SYMBOLS, ABBREVIATIONS AND PATTERNS
- 701501-04 URBAN LANE CLOSURE, 2L, 2W, UNDIVIDED
- 701606-05 URBAN LANE CLOSURE, MULTILANE, 2W, WITH MOUNTABLE MEDIAN
- 701701-05 URBAN LANE CLOSURE, MULTILANE INTERSECTION
- 701801-03 LANE CLOSURE, MULTILANE 1W OR 2W CROSSWALK OR SIDEWALK CLOSURE
- 701901 TRAFFIC CONTROL DEVICES

95TH STREET (F.A.P. ROUTE 29)
88TH AVENUE (F.A.U. ROUTE 2731) TO 76TH AVENUE
S.T.E. PROJECT NO.: TE-00D1 (785)
SECTION NO.: 08-00055-00-LT
I.T.E.P. PROJECT NO.: 102141
CITY OF HICKORY HILLS
COOK COUNTY
C-91-021-08



STATE OF ILLINOIS
DEPARTMENT OF TRANSPORTATION
DIVISION OF HIGHWAYS

APPROVED 7/15/08 Michael J. Kelly 2008 MAYOR CITY OF HICKORY HILLS

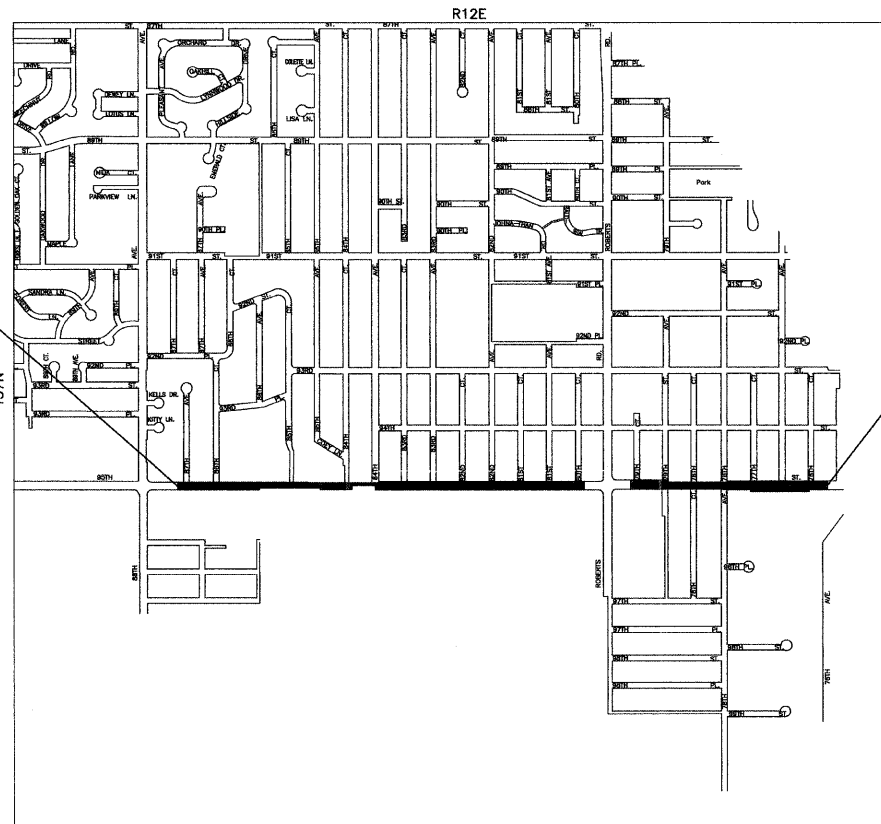
PASSED JULY 16, 2008 Christine Holt REGION ONE ENGINEER OF LOCAL ROADS & STREETS

RELEASED FOR BID BASED ON LIMITED REVIEW JULY 17, 2008 Diana M. O'Keefe DEPUTY DIRECTOR OF HIGHWAYS, REGION ONE ENGINEER

**PRINTED BY THE AUTHORITY OF
THE STATE OF ILLINOIS**

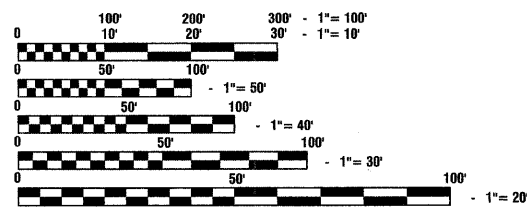
PREPARED BY OR UNDER THE
DIRECT SUPERVISION OF:

Edward J. Teresinin
7-15-08



PROJECT LOCATION

GROSS LENGTH = 7050 FEET = 1.3 MILES
NET LENGTH = 7050 FEET = 1.3 MILES



FULL SIZE PLANS HAVE BEEN PREPARED USING STANDARD ENGINEERING SCALES, REDUCED SIZED PLANS WILL NOT CONFORM TO STANDARD SCALES, IN MAKING MEASUREMENTS ON REDUCED PLANS, THE ABOVE SCALES MAY BE USED.

J. U. L. I. E.
JOINT UTILITY LOCATION INFORMATION FOR EXCAVATION
1-800-892-0123

CONTRACT NO. 63028

FEDERAL AID COORDINATOR: PHIL MARCYN 847-705-4189
CONSULTANTS: ROBINSON ENGINEERING, LTD. 708-331-6700