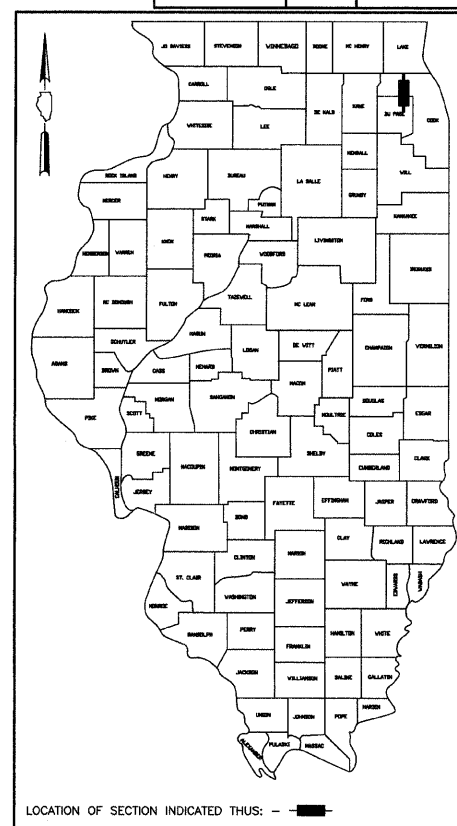


F.A.P. NO.	SECTION	COUNTY	TOTAL SHEETS	SHEET NO.
344	08-00053-00-LT	COOK/DUPAGE	15	1
COVER SHEET				
FED. ROAD DISTRICT NO. 7	ILLINOIS	FED. AID PROJECT M-8003(960)		



**STATE OF ILLINOIS
DEPARTMENT OF TRANSPORTATION
DIVISION OF HIGHWAYS**

**PLANS FOR PROPOSED FEDERAL AID PROJECT
F.A.P. ROUTE 344 (IL ROUTE 83 - BUSSE ROAD)
MARK STREET TO TOUHY AVENUE**

**SECTION 08-00053-00-LT
PROJECT NO. M-8003(960)**

**LIGHTING
COOK AND DUPAGE COUNTY
C-91-223-08**

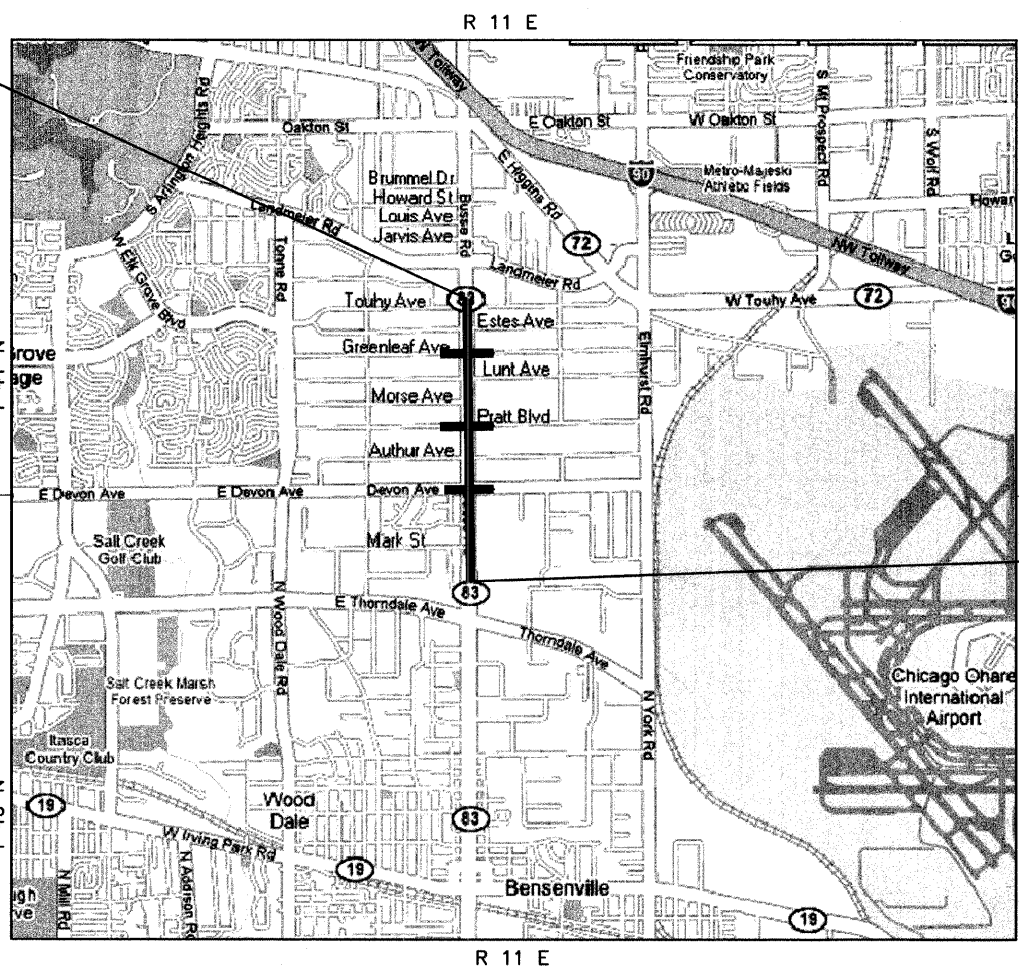
INDEX OF SHEETS

SHEET NO.	DESCRIPTION
1	TITLE SHEET
2	SUMMARY OF QUANTITIES, GENERAL NOTES AND LEGEND
3-9	LIGHTING PLANS
10	WIRING DIAGRAM
11-15	LIGHTING DETAILS

INDEX OF STATE STANDARDS

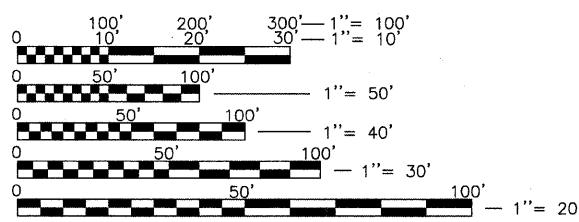
NO.	DESCRIPTION
701101-01	OFF-ROAD OPERATIONS, MULTILANE, 15' TO 24" FROM PAVEMENT EDGE
701106-01	OFF-ROAD OPERATIONS, MULTILANE, MORE THAN 15' AWAY
701421-01	LANE CLOSURE, MULTILANE, DAY OPERATIONS ONLY, FOR SPEEDS ≥ 45 MPH TO 55 MPH
701501-04	URBAN LANE CLOSURE, 2L, 2W, UNDIVIDED
701601-05	URBAN LANE CLOSURE, MULTILANE, 1W OR 2W WITH NON TRAVERSABLE MEDIAN
701606-05	URBAN LANE CLOSURE, MULTILANE 2W WITH MOUNTABLE MEDIAN
701701-05	URBAN LANE CLOSURE, MULTILANE INTERSECTION
701801-03	LANE CLOSURE, MULTILANE, 1W OR 2W CROSSWALK OR SIDEWALK CLOSURE
701901	TRAFFIC CONTROL DEVICES

END IMPROVEMENT
BUSSE ROAD
STA. 1078+33



PROJECT LOCATED IN VILLAGE
OF ELK GROVE VILLAGE

BEGIN IMPROVEMENT
BUSSE ROAD
STA. 998+85



FULL SIZE PLANS HAVE BEEN PREPARED USING STANDARD ENGINEERING SCALES. REDUCED SIZED PLANS WILL NOT CONFORM TO STANDARD SCALES. IN MAKING MEASUREMENTS ON REDUCED PLANS, THE ABOVE SCALES MAY BE USED.

THE "STANDARD SPECIFICATIONS FOR ROAD AND BRIDGE CONSTRUCTION", ADOPTED JANUARY 1, 2007 BY THE ILLINOIS DEPARTMENT OF TRANSPORTATION, SHALL GOVERN THIS WORK.



J.U.L.I.E.
JOINT UTILITY LOCATION
INFORMATION FOR EXCAVATION
1-800-892-0123 OR 811

LOCATION MAP (NOT TO SCALE)

NET AND GROSS PROJECT LENGTH: 11,200 FEET (2.1 MILES)

STATE OF ILLINOIS
DEPARTMENT OF TRANSPORTATION
DIVISION OF HIGHWAYS

APPROVED MAY 14 20 08
Alan P. Pappas
DIRECTOR OF ENGINEERING AND COMMUNITY DEVELOPMENT
VILLAGE OF ELK GROVE VILLAGE

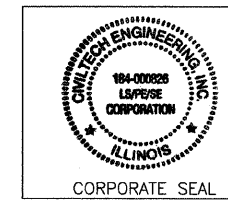
PASSED MAY 21 20 08
Christopher Hour
DISTRICT ONE ENGINEER OF LOCAL ROADS & STREETS

RELEASING FOR
BID BASED ON
LIMITED REVIEW MAY 21, 20 08

Diana M. D'Keefe
DEPUTY DIRECTOR OF HIGHWAYS, REGION ONE ENGINEER

P.E. SIGNATURE: *David Mertz*
P.E. NAME: DAVID MERTZ
DATE: 16 MAY 2008
IL LICENSE NO.: 062-052068
LICENSE EXPIRATION: 11/30/2009

P.E. SIGNATURE: *Derek N. Mall*
P.E. NAME: DEREK N. MALL
DATE: 5/19/08
IL LICENSE NO.: 062-051308
LICENSE EXPIRATION: 11/30/2009



PLANS PREPARED BY:

CIVILTECH
450 E. Devon Ave, Suite 300 - Itasca, Illinois 60143
Tel: 630.773.3900 - Fax: 630.773.3975
www.civiltechinc.com



PRINTED BY AUTHORITY OF THE STATE OF ILLINOIS

CONTRACT NO. 63029

FEDERAL AID DESIGN ENGINEER: PHIL MARCYN 847-705-4189
CONSULTANT ENGINEER: DEREK MALL, P.E. CIVILTECH ENGINEERING, INC.