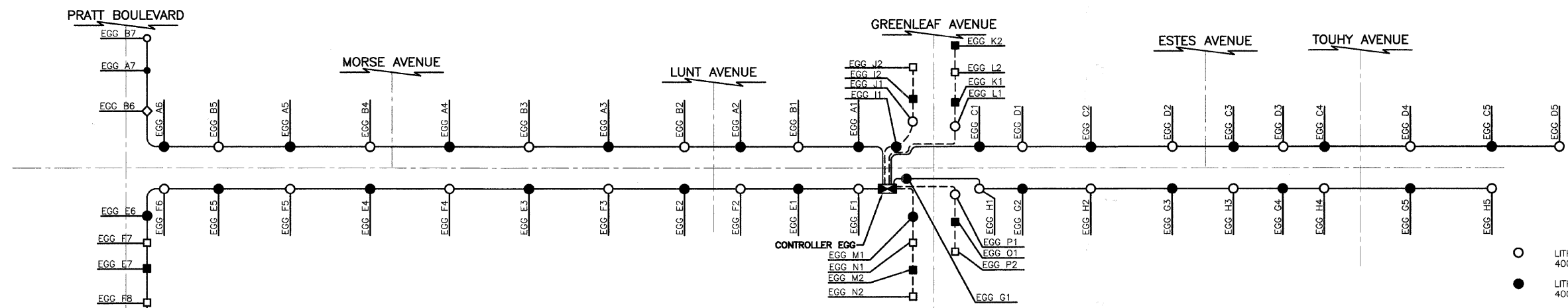
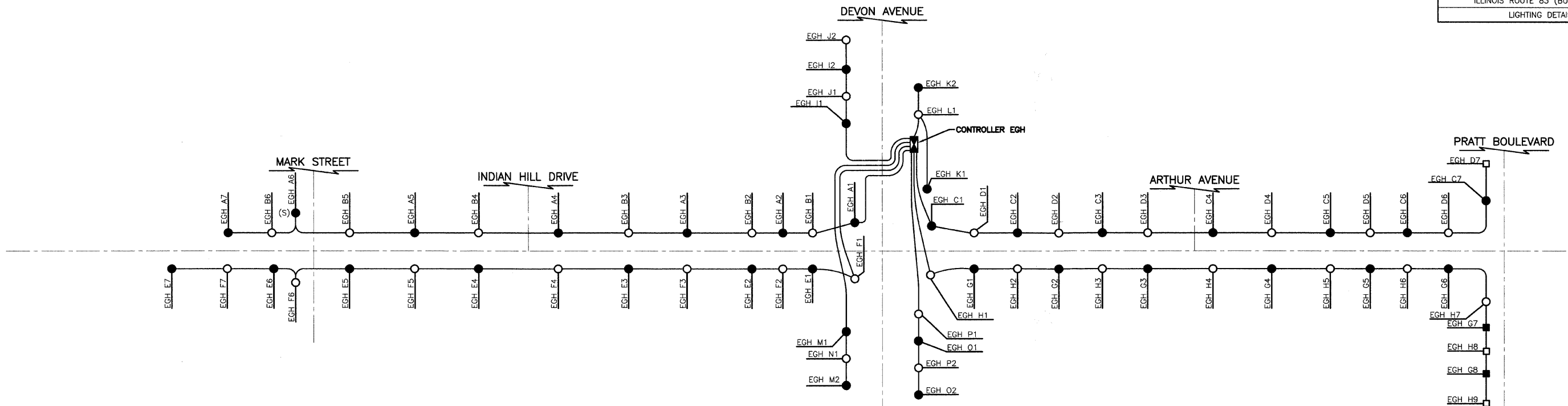


SECTION	COUNTY	TOTAL SHEETS	SHEET NO.
08-00053-00-LT	COOK/DUPAGE	15	10
ILLINOIS ROUTE 83 (BUSSE ROAD)			
LIGHTING DETAILS			



CONTROLLER EGH  
CIRCUIT LOAD TABLE

CIRCUIT NO.	TOTAL FIXTURE AMPS	KW LOAD
A	13.0	3.1
B	11.7	2.8
C	13.65	2.8
D	11.05	2.7
E	13.65	3.3
F	13.65	3.3
G	14.95	3.6
H	16.25	3.9
I	3.90	0.9
J	3.90	0.9
K	3.90	0.9
L	1.95	0.9
M	3.90	0.9
N	1.95	0.5
O	3.90	0.9
P	3.90	0.9
TOTAL	139.1	33.2

CONTROLLER EGG  
CIRCUIT LOAD TABLE

CIRCUIT NO.	TOTAL FIXTURE AMPS	KW LOAD
A	13.00	3.1
B	13.00	3.1
C	9.75	2.3
D	9.75	2.3
E	14.30	3.4
F	14.30	3.4
G	9.75	2.3
H	9.75	2.3
I	3.25	0.8
J	3.25	0.8
K	2.60	0.6
L	3.25	0.8
M	3.25	0.8
N	2.60	0.6
O	1.30	0.3
P	3.25	0.8
TOTAL	116.4	27.7

400W LUMINAIRE = 1.95A  
250W LUMINAIRE = 1.30A

400W LUMINAIRE = 1.95A  
250W LUMINAIRE = 1.30A

- LEGEND**
- LITHONIA LUMINAIRE, SODIUM VAPOR 400W, 240V ON RED WIRE
  - LITHONIA LUMINAIRE, SODIUM VAPOR 400W, 240V ON BLACK WIRE
  - (S)○ LITHONIA LUMINAIRE, SODIUM VAPOR 250W, 240V ON RED WIRE
  - KIM LUMINAIRE, SODIUM VAPOR 250W, 240V ON RED WIRE
  - KIM LUMINAIRE, SODIUM VAPOR 250W, 240V ON BLACK WIRE
  - ▣ PROPOSED LIGHTING CONTROLLER 240/480V, 1 φ, 3-WIRE
  - UNIT DUCT, WITH 3-1/8" NO. 4 AND 1-1/8" NO. 4 GROUND, 600V (XLP-TYPE USE) 1 1/4" DIA. POLYETHYLENE
  - - - UNIT DUCT, WITH 3-1/8" NO. 8 AND 1-1/8" NO. 8 GROUND, 600V (XLP-TYPE USE) 1" DIA. POLYETHYLENE

**REVISIONS**

NAME	DATE

ILLINOIS DEPARTMENT OF TRANSPORTATION  
ILLINOIS ROUTE 83  
ROADWAY LIGHTING  
**LIGHTING DETAILS**

ILLINOIS ROUTE 83  
(BUSSE ROAD)

SCALE IN FEET

DATE: 05/14/2008  
CHECKED BY: D.N.M.

