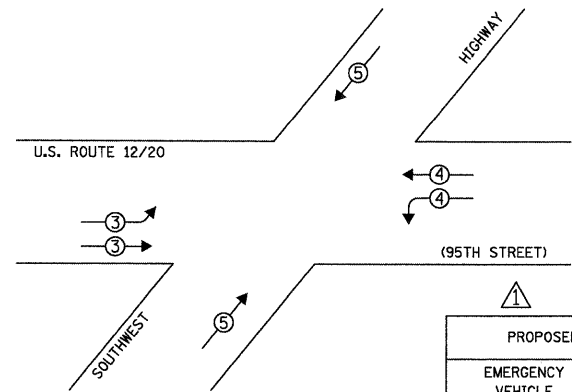


PHASE DESIGNATION DIAGRAM

OVERLAP LETTER	PERMISSIVE PHASE	PROTECTED PHASE
B	= 4	+ 5
D	= 8	+ 1

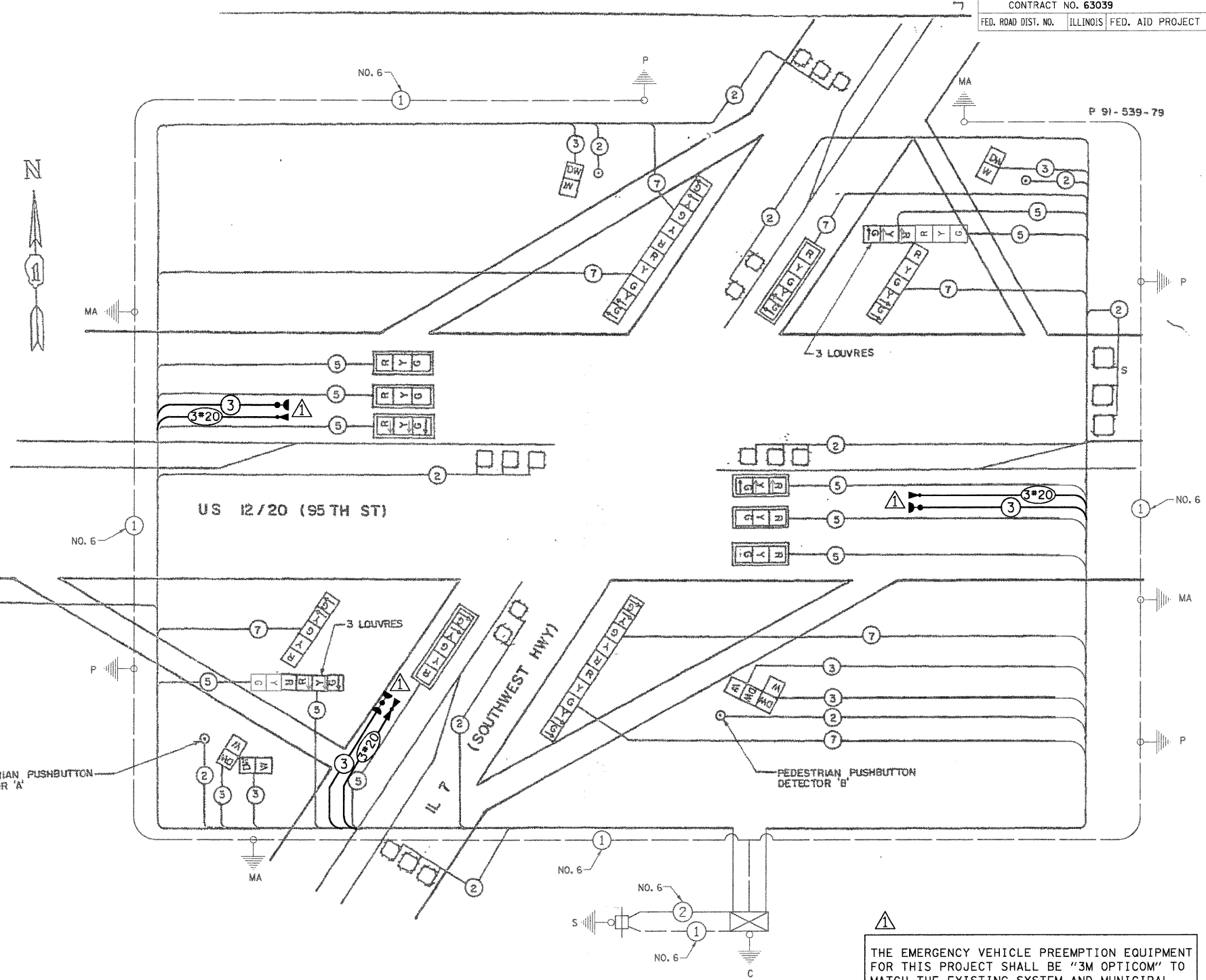
EMERGENCY VEHICLE PREEMPTION SEQUENCE



PROPOSED EMERGENCY VEHICLE PREEMPTORS			
EMERGENCY VEHICLE PREEMPTOR	3	4	5
MOVEMENT	→	↔	↕

- CABLE PLAN LEGEND**
- [G] 8" TRAFFIC SIGNAL SECTION
 - [R] 12" TRAFFIC SIGNAL SECTION
 - [W] 12" PEDESTRIAN SIGNAL SECTION
 - [C] CONTROLLER CABINET
 - [S] SERVICE INSTALLATION
 - [V] VEHICLE DETECTOR, INDUCTION LOOP
 - [P] PUSHBUTTON DETECTOR
- ② DENOTES NUMBER OF CONDUCTORS (NEW). ALL LOOP DETECTOR CABLE TO BE SHIELDED. ALL CABLE NO. 14 EXCEPT AS INDICATED.
- "P" SIGNAL FACE WITH BACKPLATE "P" INDICATES PROGRAMMED
- [E] EMERGENCY VEHICLE LIGHT DETECTOR CONFIRMATION BEACON

RESTORATION OF WORK AREA. RESTORATION OF THE TRAFFIC SIGNAL WORK AREA SHALL BE INCIDENTAL TO THE RELATED PAY ITEM SUCH AS FOUNDATION, CONDUIT, HANDHOLE, TRENCH AND BACKFILL, ETC., AND NO EXTRA COMPENSATION SHALL BE ALLOWED. ALL ROADWAY SURFACES SUCH AS SHOULDERS, MEDIANS, SIDEWALKS, PAVEMENT, ETC. SHALL BE REPLACED IN KIND. ALL DAMAGE TO MOWED LAWNS SHALL BE REPLACED WITH AN APPROVED SOD, AND ALL DAMAGE TO UNMOWED FIELDS SHALL BE SEED IN ACCORDANCE WITH STANDARD SPECIFICATIONS 252 AND 250 RESPECTIVELY.



SCHEDULE OF QUANTITIES

ITEM	UNIT	TOTAL
MAINTENANCE OF EXISTING TRAFFIC SIGNAL INSTALLATION	EACH	1
ELECTRIC CABLE IN CONDUIT, SIGNAL NO. 14 3C	FOOT	714
LIGHT DETECTOR	EACH	3
LIGHT DETECTOR AMPLIFIER	EACH	1
MODIFY EXISTING CONTROLLER CABINET	EACH	1
ELECTRIC CABLE IN CONDUIT NO. 20 3/C, TWISTED, SHIELDED	FOOT	714
TRAFFIC CONTROL AND PROTECTION, STANDARD 701701	EACH	1

THE EMERGENCY VEHICLE PREEMPTION EQUIPMENT FOR THIS PROJECT SHALL BE "3M OPTICOM" TO MATCH THE EXISTING SYSTEM AND MUNICIPAL REQUIREMENTS

INSTALLATION OF EMERGENCY VEHICLE PREEMPTION
CHRISTOPHER B. BURKE ENGINEERING LTD.
 9575 West Higgins Road, Suite 600
 Rosemont, Illinois 60018
 (847) 823-0500

Illinois Department of Transportation
CABLE PLAN

US 12/20 (95TH ST) & SOUTHWEST HWY

REVISIONS	
NAME	DATE
CBBEL	3/20/08

SCALE: None
 DATE: 10-26-02

DRAWN BY PQ
 DESIGNED BY RRM
 CHECKED BY TSK

I.D.O.T. TRAFFIC SIGNAL INSTALLATION ELECTRICAL SERVICE REQUIREMENTS

TYPE	NO. OF LAMPS	INCAND.	LED	% OPERATION	TOTAL WATTAGE
SIGNAL (RED)	18	135		0.50	1215.00
(YELLOW)	18	135		0.25	607.50
(GREEN)	18	135		0.25	607.50
ARROW	16	135		0.10	216.00
PED. SIGNAL	6	90		1.00	540.00
CONTROLLER	1	100		1.00	100.00
ILLUM. SIGN	-	252		0.05	-
FLASHER				0.50	-

ENERGY COSTS TO: TOTAL = 3286.00
 ILLINOIS DEPARTMENT OF TRANSPORTATION
 DIVISION OF HIGHWAY/DISTRICT 1
 201 WEST CENTER COURT/SCHAUMBURG, ILLINOIS 60196-1096
 ENERGY SUPPLY: CONTACT: MILTON RAY
 PHONE: (708) 235-2315
 COMPANY: COMED

FOUNDATION (DEPTH)	FT. (m)	CABLE SLACK	FT. (m)	VERTICAL	FT. (m)
TYPE A - POST	4 (1.2)	HANDHOLE	6.5 (2.0)	ALL FOUNDATIONS	3.5 (1.0)
D - CONTROLLER	4 (1.2)	DOUBLE HANDHOLE	13 (4.0)	MAST ARM (L) POLE	20'+L-2'
E - M. ARM POLE		SIGNAL POST	2 (1.0)		(6m+L-0.6m)
24" (600mm)	10 (3.0)	CONTROLLER CAB.	1 (0.5)	BRACKET MOUNTED	13 (4.0)
30" (750mm)	15 (4.6)	FIBER OPTIC	13 (4.0)	PED. PUSHBUTTON	4 (1.2)
36" (900mm)	15 (4.6)	ELECTRIC SERVICE	1 (0.5)	ELECTRIC SERVICE	13.5 (4.1)
		GROUND CABLE	1 (0.5)	SERVICE TO GROUND	13.5 (4.1)
				POST MOUNTED	6 (1.8)