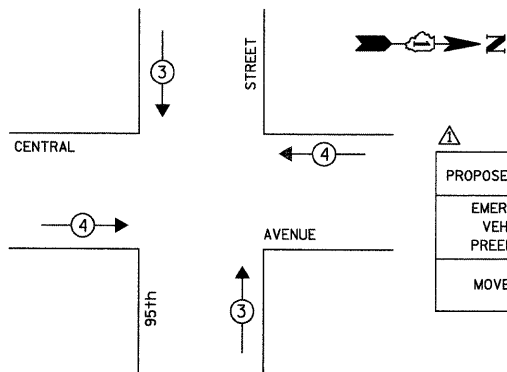


EMERGENCY VEHICLE PREEMPTION SEQUENCE

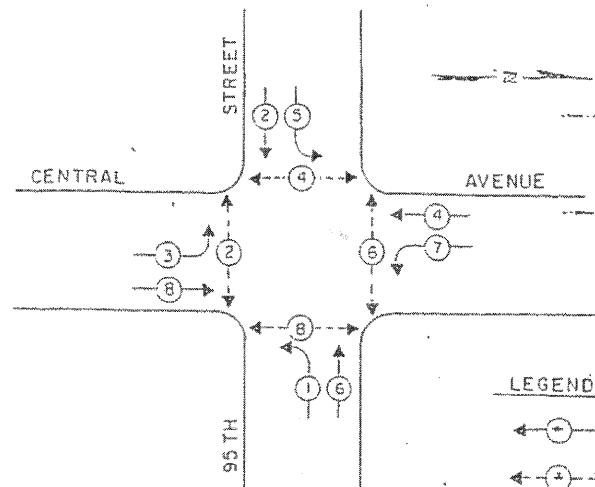


EMERGENCY VEHICLE PREEMPTOR	3	4
MOVEMENT	↓ ↑	← →

RESTORATION OF WORK AREA. RESTORATION OF THE TRAFFIC SIGNAL WORK AREA SHALL BE INCIDENTAL TO THE RELATED PAY ITEM SUCH AS FOUNDATION, CONDUIT, HANDHOLE, TRENCH AND BACKFILL, ETC., AND NO EXTRA COMPENSATION SHALL BE ALLOWED. ALL ROADWAY SURFACES SUCH AS SHOULDERS, MEDIANS, SIDEWALKS, PAVEMENT, ETC. SHALL BE REPLACED IN KIND. ALL DAMAGE TO MOWED LAWNS SHALL BE REPLACED WITH AN APPROVED SOD, AND ALL DAMAGE TO UNMOWED FIELDS SHALL BE SEEDED IN ACCORDANCE WITH STANDARD SPECIFICATIONS 252 AND 250 RESPECTIVELY.

CONTROLLER SEQUENCE

REFERRING TO STANDARD 8570(D), THE VEHICULAR AND PEDESTRIAN PHASES USED ARE DESIGNATED BELOW

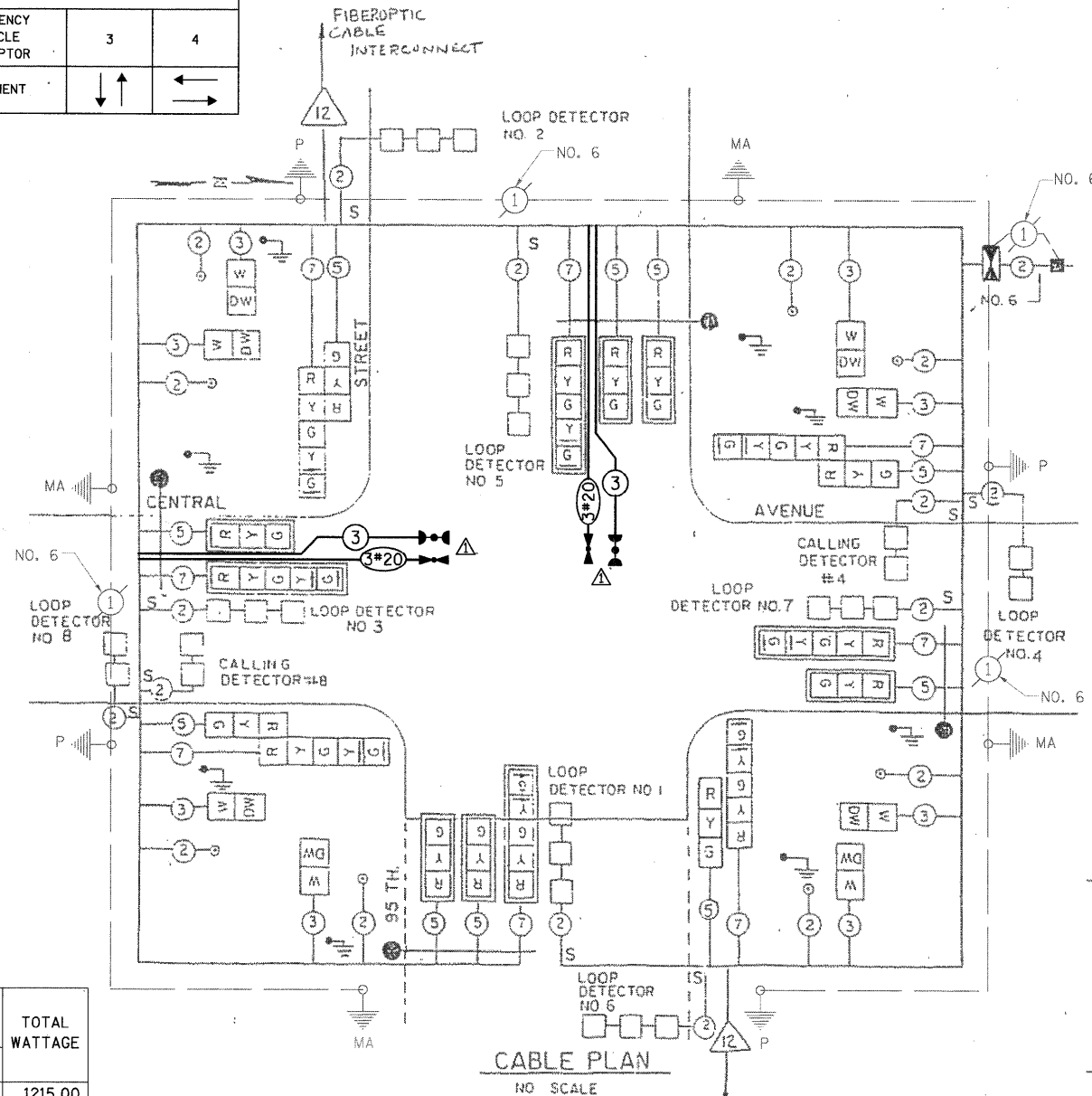


LEGEND

- ← ⊕ → DUAL ENTRY PHASE
- ← ⊕ → PEDESTRIAN PHASE

\* NUMBER REFERS TO ASSOCIATED PHASE

PHASE DESIGNATION DIAGRAM  
DUAL ENTRY - ALL LEGS  
PROTECTED/PERMITTED LEFT TURN PHASING



CABLE PLAN

NO SCALE

CABLE PLAN LEGEND

- R 12" TRAFFIC SIGNAL SECTION
- CONTROLLER CABINET
- SERVICE INSTALLATION
- VEHICLE DETECTOR, INDUCTION LOOP
- 2 DENOTES NUMBER OF CONDUCTORS (NEW). ALL CABLE NO. 14 EXCEPT AS INDICATED.
- R Y G Y G SIGNAL FACE WITH BACKPLATE
- W DW PEDESTRIAN SIGNAL HEAD
- ⊕ PEDESTRIAN PUSHBUTTON
- 12 FIBEROPTIC INTERCONNECT CABLE
- GROUNDING SYSTEM CONNECTION
- S SHIELDED AND TWISTED
- EMERGENCY VEHICLE LIGHT DETECTOR CONFIRMATION BEACON

SCHEDULE OF QUANTITIES

ITEM	UNIT	TOTAL
MAINTENANCE OF EXISTING TRAFFIC SIGNAL INSTALLATION	EACH	1
ELECTRIC CABLE IN CONDUIT, SIGNAL NO. 14 3C	FOOT	322
LIGHT DETECTOR	EACH	2
LIGHT DETECTOR AMPLIFIER	EACH	1
MODIFY EXISTING CONTROLLER CABINET	EACH	1
ELECTRIC CABLE IN CONDUIT NO. 20 3/C, TWISTED, SHIELDED	FOOT	322
TRAFFIC CONTROL AND PROTECTION, STANDARD 701701	EACH	1

THE EMERGENCY VEHICLE PREEMPTION EQUIPMENT FOR THIS PROJECT SHALL BE "3M OPTICOM" TO MATCH THE EXISTING SYSTEM AND MUNICIPAL REQUIREMENTS

TYPE	NO. OF LAMPS	WATTAGE	TOTAL WATTAGE
SIGNAL (RED)	18	135	1215.00
(YELLOW)	18	135	607.50
(GREEN)	18	135	607.50
ARROW	16	135	216.00
PED. SIGNAL	8	90	720.00
CONTROLLER	1	100	100.00
ILLUM. SIGN	-	252	-
FLASHER	-	-	0.50
<b>ENERGY COSTS TO:</b>	<b>TOTAL =</b>	<b>3466.00</b>	

ILLINOIS DEPARTMENT OF TRANSPORTATION  
DIVISION OF HIGHWAY/DISTRICT 1  
201 WEST CENTER COURT/SCHAUMBURG, ILLINOIS 60196-1096  
ENERGY SUPPLY: CONTACT: MILTON RAY  
PHONE: (708) 235-2315  
COMPANY: COMED

FOUNDATION (DEPTH)	FT. (m)	CABLE SLACK	FT. (m)	VERTICAL	FT. (m)
TYPE A - POST	4 (1.2)	HANDHOLE	6.5 (2.0)	ALL FOUNDATIONS	3.5 (1.0)
D - CONTROLLER	4 (1.2)	DOUBLE HANDHOLE	13 (4.0)	MAST ARM (L) POLE	20'-L-2=
E - M. ARM POLE	2 (0.6)	SIGNAL POST	2 (0.6)		(6m+L-0.6m)=
24" (600mm)	10 (3.0)	CONTROLLER CAB.	1 (0.5)	BRACKET MOUNTED	13 (4.0)
30" (750mm)	15 (4.6)	FIBER OPTIC	13 (4.0)	PED. PUSHBUTTON	4 (1.2)
36" (900mm)	15 (4.6)	ELECTRIC SERVICE	1 (0.5)	ELECTRIC SERVICE	13.5 (4.1)
		GROUND CABLE	1 (0.5)	SERVICE TO GROUND	13.5 (4.1)
				POST MOUNTED	6 (1.8)

INSTALLATION OF EMERGENCY VEHICLE PREEMPTION  
**CHRISTOPHER B. BURKE ENGINEERING LTD.**  
9575 West Higgins Road, Suite 600  
Rosemont, Illinois 60018  
(847) 823-0500

COUNTY OF COOK  
DEPARTMENT OF HIGHWAYS  
McDONOUGH ASSOCIATES, INC.  
ENGINEERS ARCHITECTS

CABLE PLAN, SEQUENCE OF OPERATIONS AND BILL OF MATERIALS  
CENTRAL AVENUE AT 95TH STREET

COMPUTED \_\_\_\_\_ APPROVED \_\_\_\_\_  
DRAWN \_\_\_\_\_  
CHECKED \_\_\_\_\_ CHIEF ENGINEER OF DESIGN

UPDATED BY CCHD 797